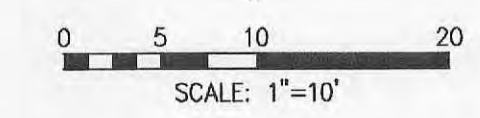


0.923 ACRES

N 89°42'07" W 305.64'

10' WIDE EASEMENT

10' UTILITY EASEMENT



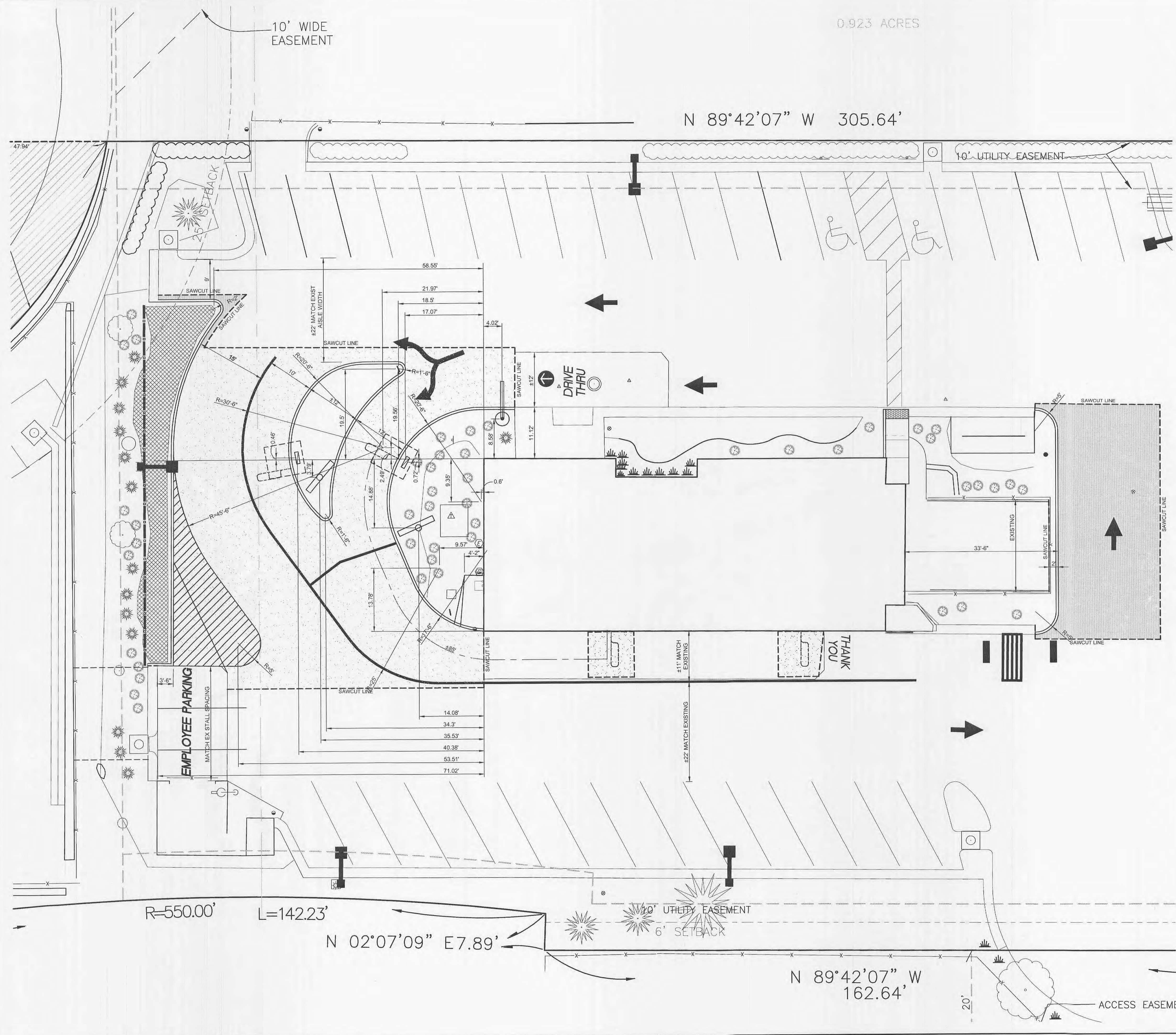
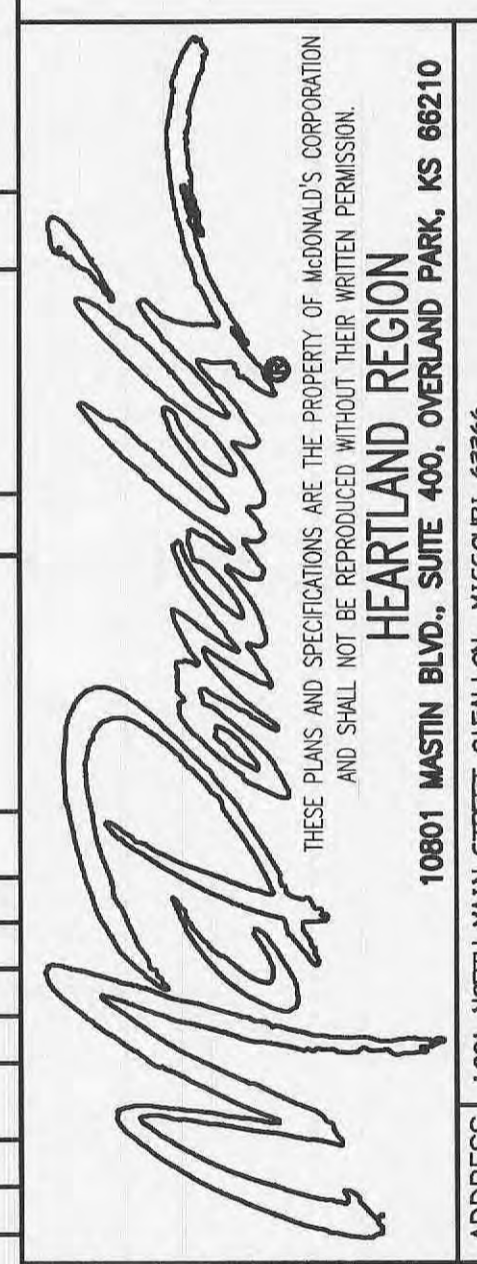
### CONSTRUCTION STAKEOUT:

FOR CONSTRUCTION STAKEOUT SERVICES PLEASE CONTACT MARC EDWARDS OR STAN EMERICK OF FARNSWORTH GROUP INC. AT 314-962-7900

### NOTE TO CONTRACTOR

THE CONTRACTOR IS TO LAYOUT ALL SIGNAGE, CODS, MENUBOARDS, ETC AND HAVE THE LOCATIONS INSPECTED AND APPROVED BY THE McDONALD'S REPRESENTATIVE PRIOR TO CONSTRUCTION.

REV	DATE	DESCRIPTION	BY	ISSUE REF
1	9-8-11	DETENTION BASIN FENCING	JPB	
2	10-26-11	CITY COMMENTS	JPB	



#### PAVING SPECIFICATION

REFER TO SHEET SD1 DETAIL 11 FOR ASPHALT PAVEMENT DETAIL, REFER TO CO.1 AND CO.2 FOR TYPICAL PAVEMENT NOTES

NOTE: McDONALD'S PROJECT MANAGER RESERVES THE RIGHT TO REQUEST A COMPACTION TEST AND/OR A CORE SAMPLE. IF TESTS PROVE CORRECT, PER ABOVE SPECIFICATIONS, TESTS WILL BE AT THE EXPENSE OF McDONALD'S, OTHERWISE G.C. WILL BE CHARGED.

#### LOT LIGHTING RECOMMENDATION

#### PARKING INFORMATION

TOTAL SPACES	38
	3 SPACES 10'-0" X 42' @ 60'
	3 SPACES 9'-0" X 19' @ 90'
	2 HCP SPACES 9'-0" X 19' @ 75'
	33 SPACES 9'-0" X 19' @ 75'

#### UTILITY INFORMATION

	SIZE	TYPE	LOCATION
SANITARY SEWER	-	-	-
WATER	-	-	-
STORM SEWER	-	-	-
ELECTRIC	-	-	-
GAS	-	-	-

#### SURVEY INFORMATION

PREPARED BY: **Farnsworth GROUP** 20 ALLEN AVENUE, SUITE 200 ST LOUIS, MISSOURI 63119 (314) 962-7900 / (314) 962-1263 Fax www.f-w.com

LEGEND	
S - SANITARY SEWER	G - GAS
W - WATER	LP-30 - LOT LIGHT
ST - STORM SEWER	(76.5) - EXISTING ELEVATION
E - ELECTRIC	(77.0) - PROPOSED ELEVATION

#### PLAN SCALE: SHOWN

#### STREET ADDRESS

1001 NORTH MAIN STREET

CITY: O'FALLON STATE: MISSOURI

COUNTY: ST. CHARLES

REGIONAL DWG. NO	NATIONAL NUMBER
024-0674	-

DATE	APPROVAL
	SIGNATURE (2 REQUIRED)
	REGIONAL MGR
	CONST. MGR
	PROJECT MANAGER
	REAL ESTATE MGR
	CO-SIGN SIGNATURES
	CONTRACTOR
	OWNER

STATUS	DATE	BY
PRELIMINARY	5-25-11	FG
FINAL PLAN	-	FG
AS-CONST.	-	-

**C1.2**  
SITE LAYOUT PLAN