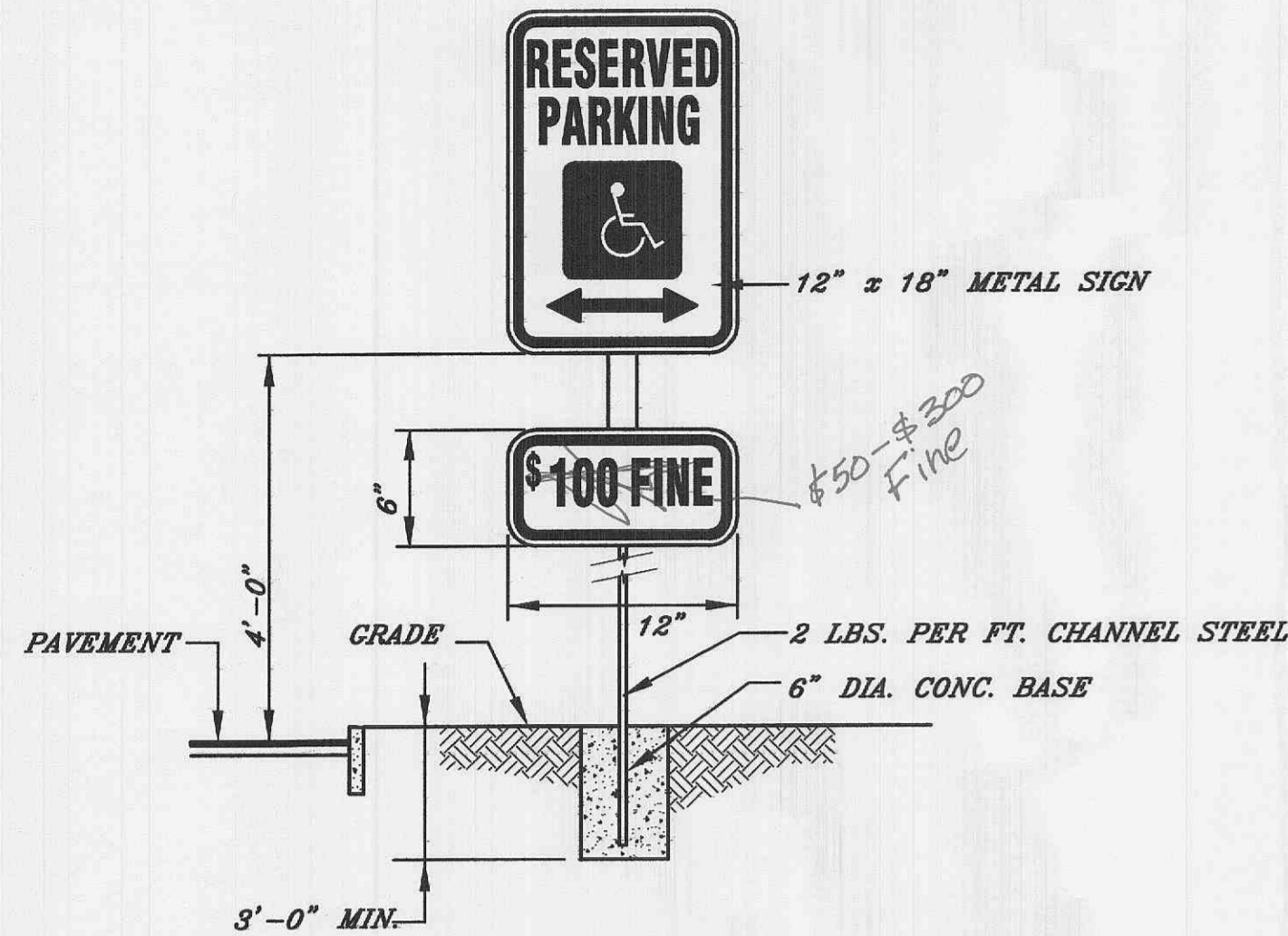
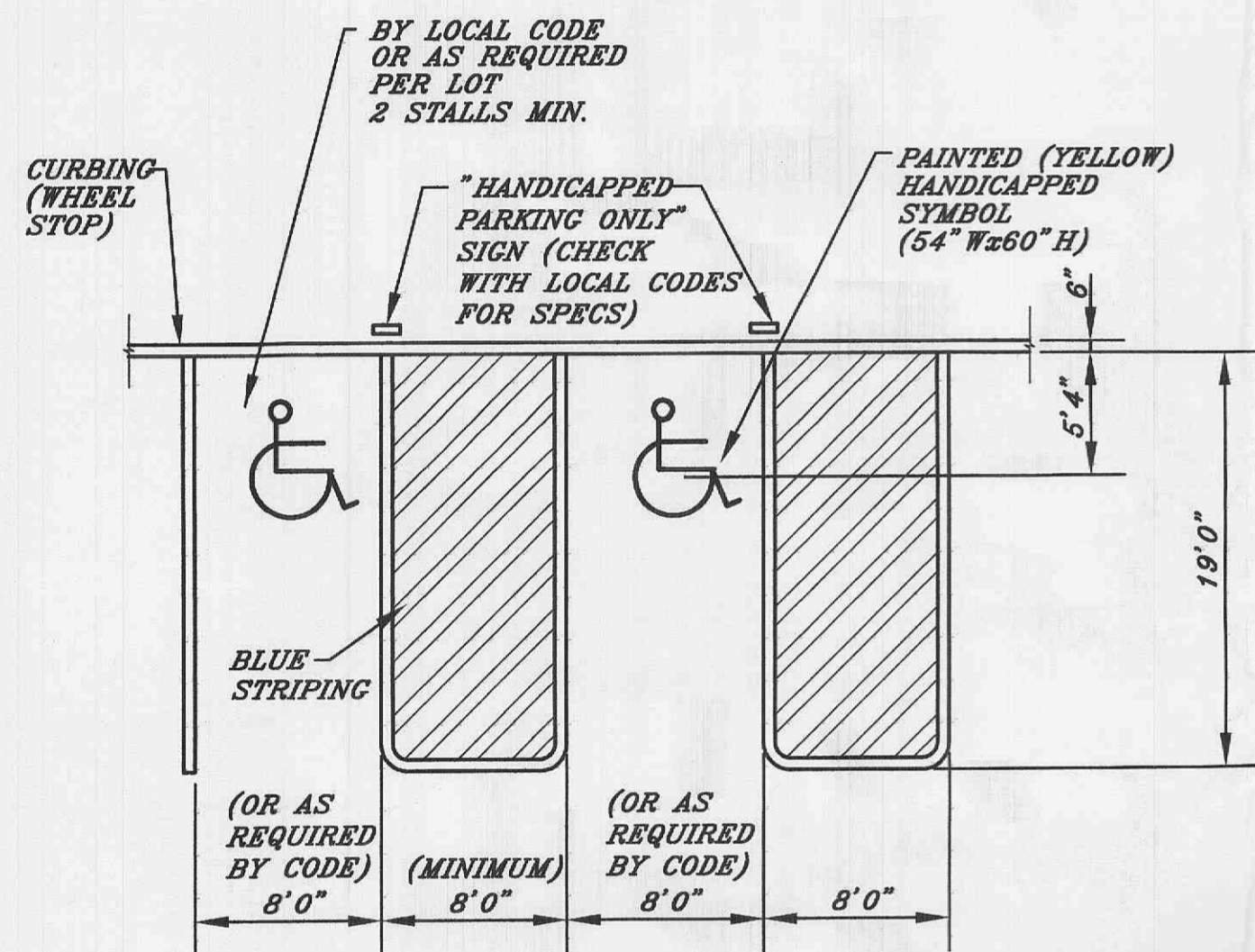


HANDICAPPED DETAILS



**AMOUNT PER LOCAL CODE OR \$100 IF NOT SPECIFIED IN LOCAL CODE

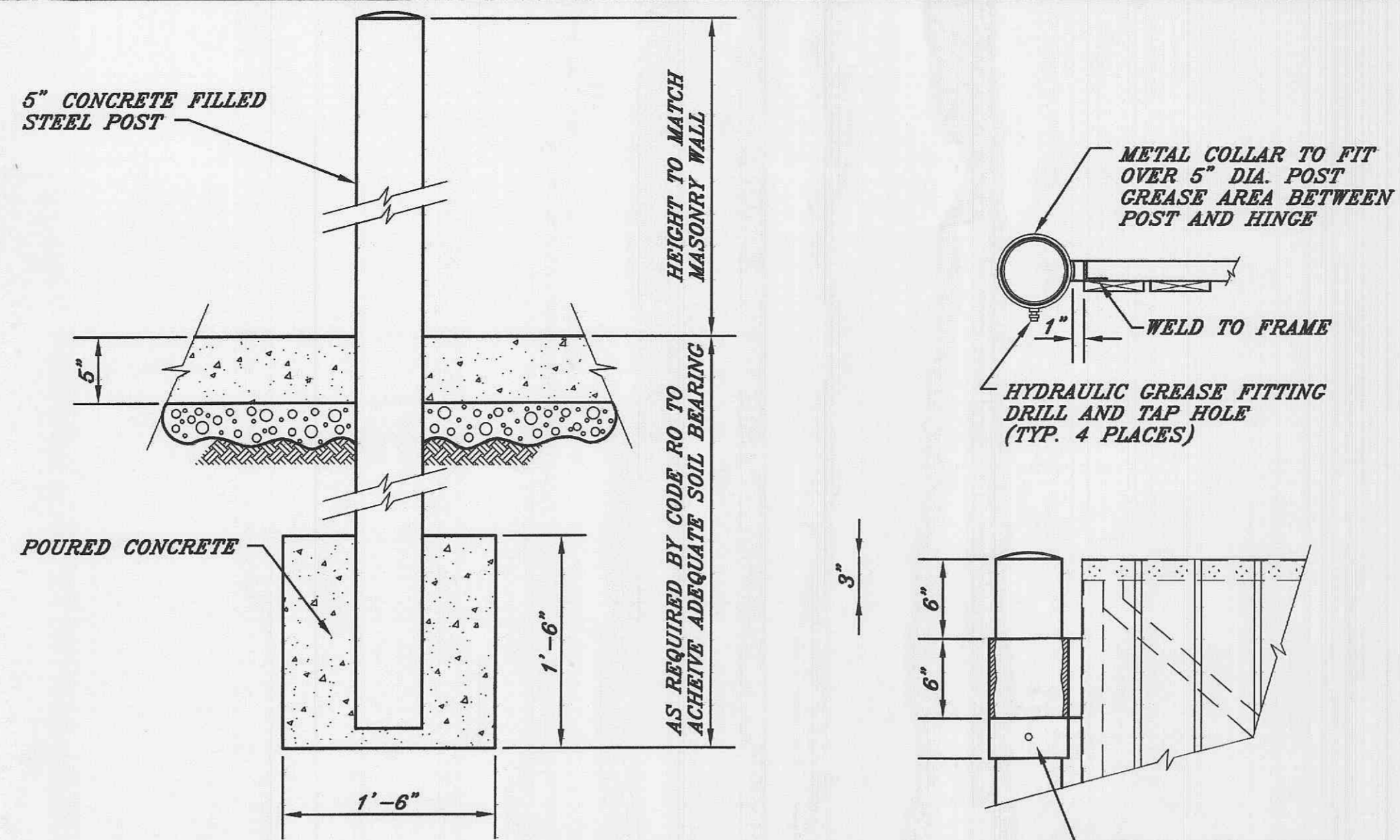
HANDICAPPED SIGN



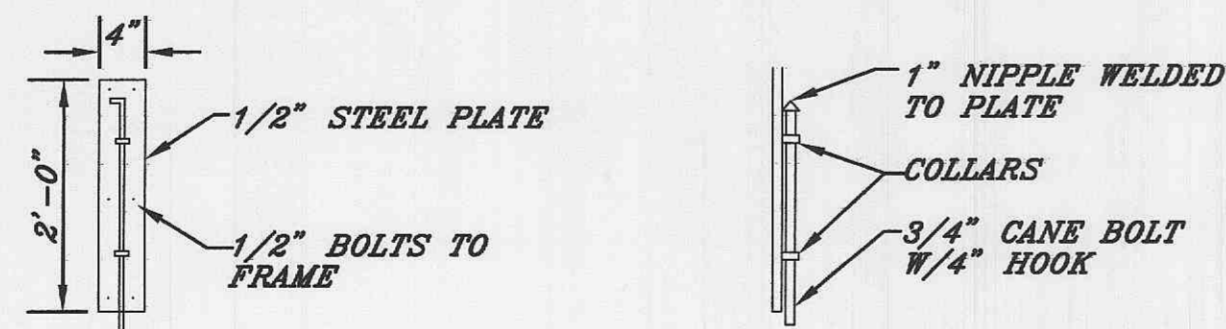
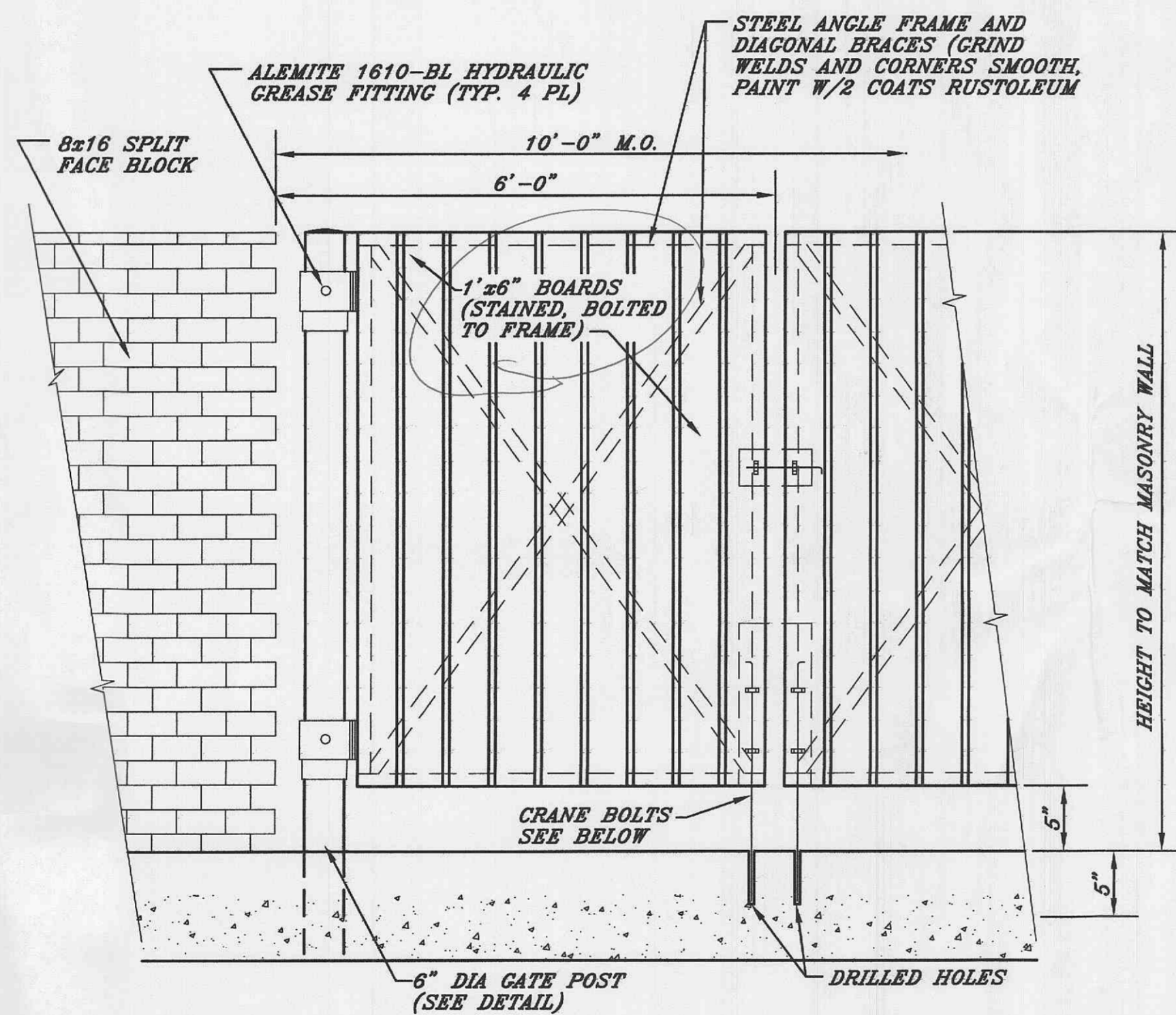
NOTE: ADJUST 45°, 60°, 75°, ANGLED PARKING

HANDICAPPED STALL MARKING
MIN. REQUIREMENT
(GC TO VERIFY LOCAL CODES)

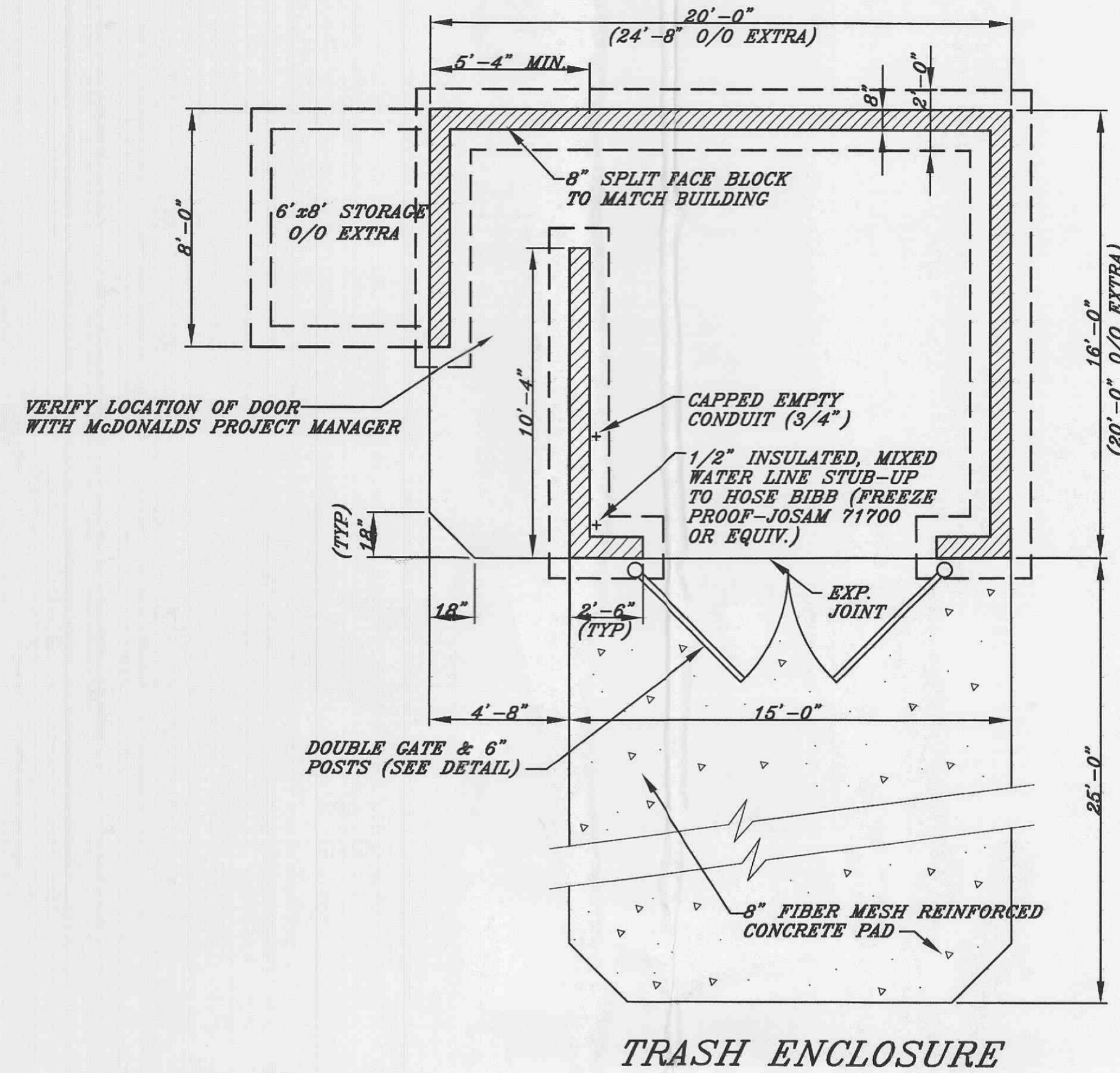
TRASH ENCLOSURE DETAILS



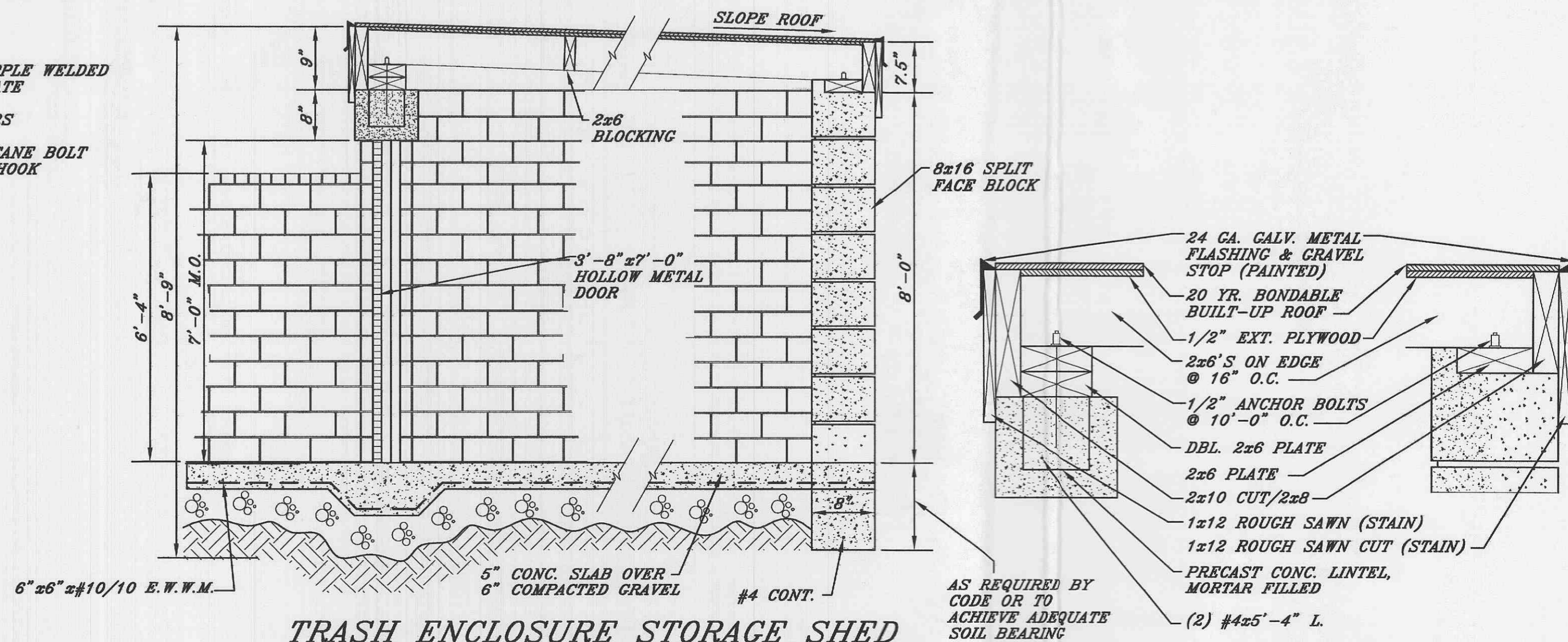
TRASH ENCLOSURE GATE POST



TRASH ENCLOSURE GATE AND MOUNTING DETAILS



TRASH ENCLOSURE



TRASH ENCLOSURE STORAGE SHED

NO.	DATE	DESCRIPTION	BY	UNITS OF MEASURE
1	10/19/95	GENERAL REVISION/REVIEW	JM	
2	3/02/95	TRASH ENCLOSURE DIMENSION	JM	

McDonald's
THESE DRAWINGS AND SPECIFICATIONS ARE THE PROPERTY OF
MCDONALD'S CORPORATION AND SHALL NOT BE COPIED OR REPRODUCED
WITHOUT THEIR WRITTEN PERMISSION

MCDONALD'S CORPORATION		DATE ISSUED	
SITE DETAILS		DATE APPROVED	
CORRAL AND HANDICAP DETAILS		DATE CHECKED	
MATERIAL / DESCRIPTION		APPROVED BY	
DRAWN BY		ISSUE REF	
D. H. ALDEN			
J. L. HENRY			
DRAWING ID			
SD2			