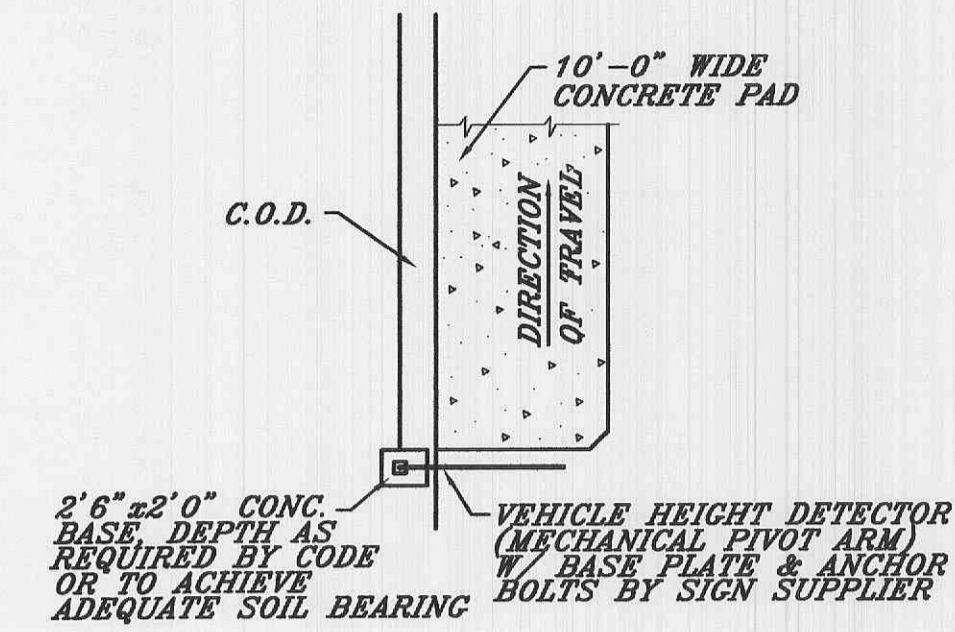
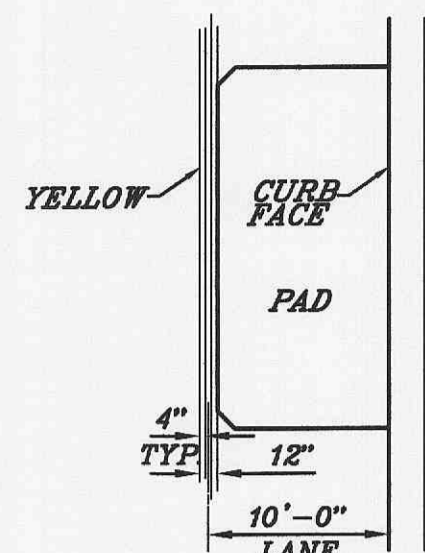


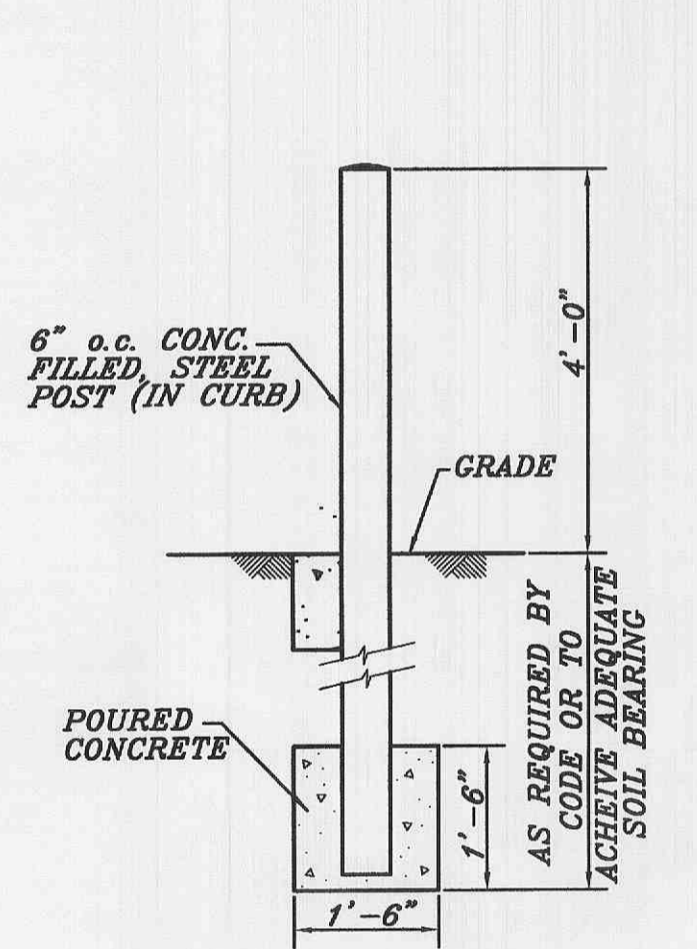
DRIVE THRU DETAILS



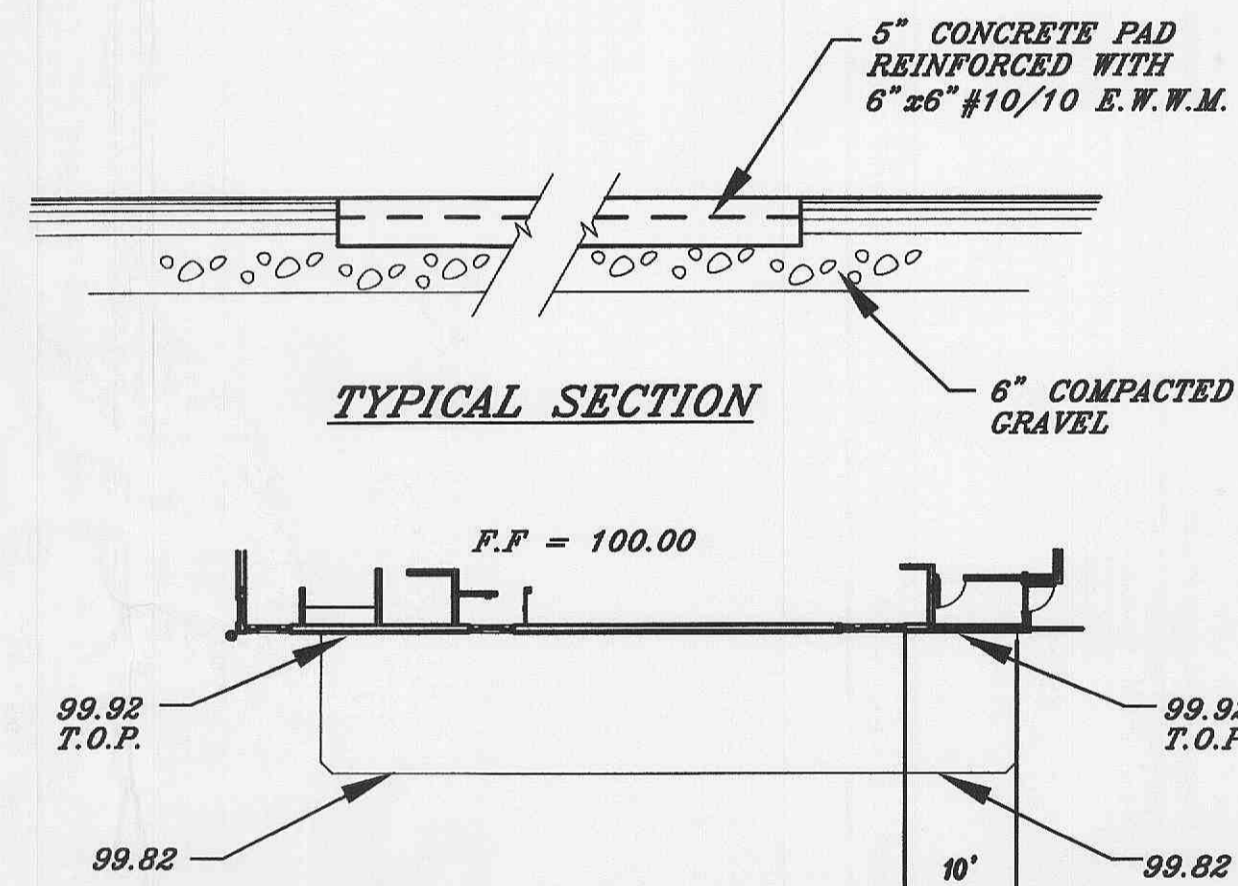
DRIVE THRU VEHICLE HEIGHT DETECTOR (OPTIONAL)



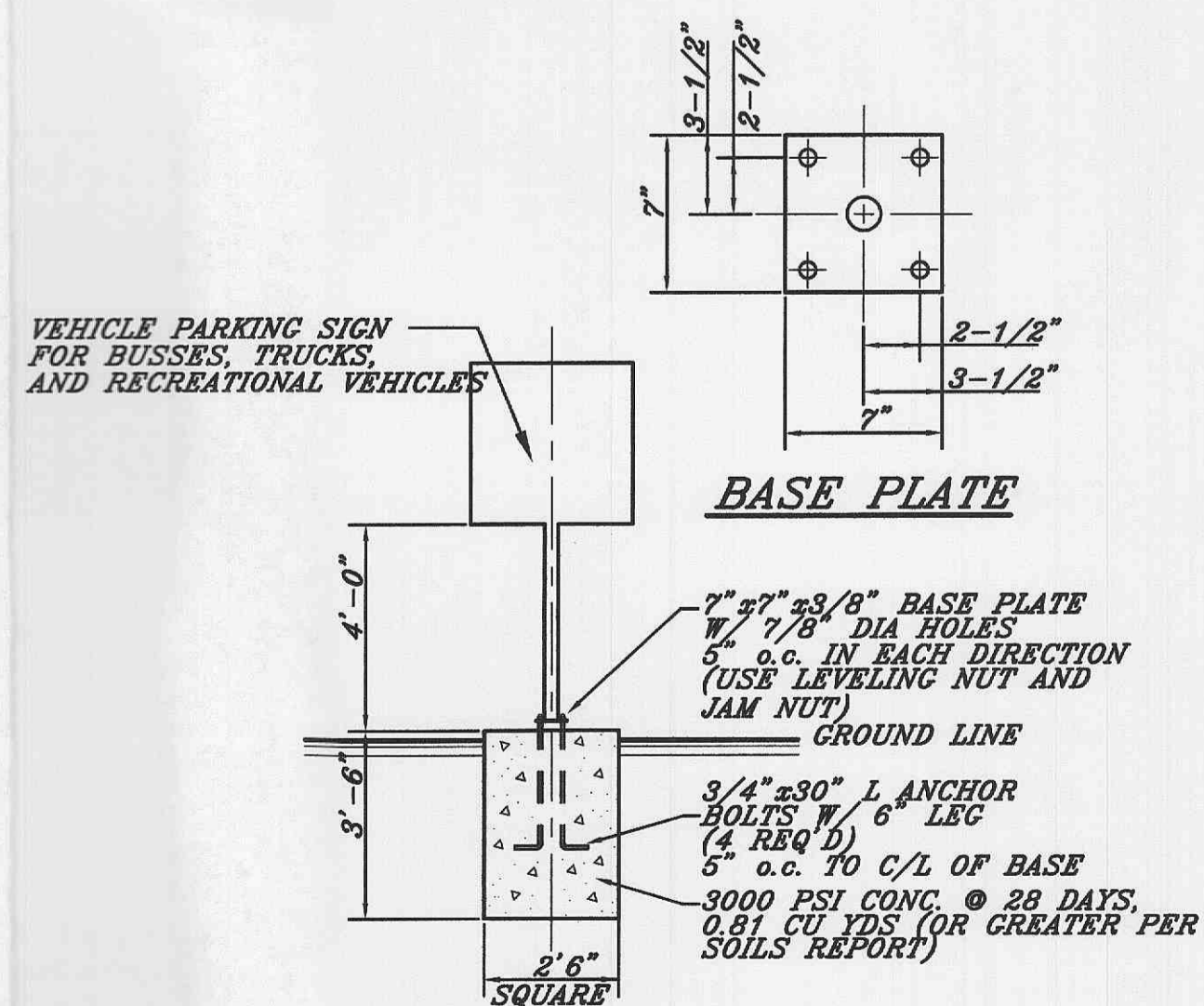
DRIVE-THRU LANE STRIPING



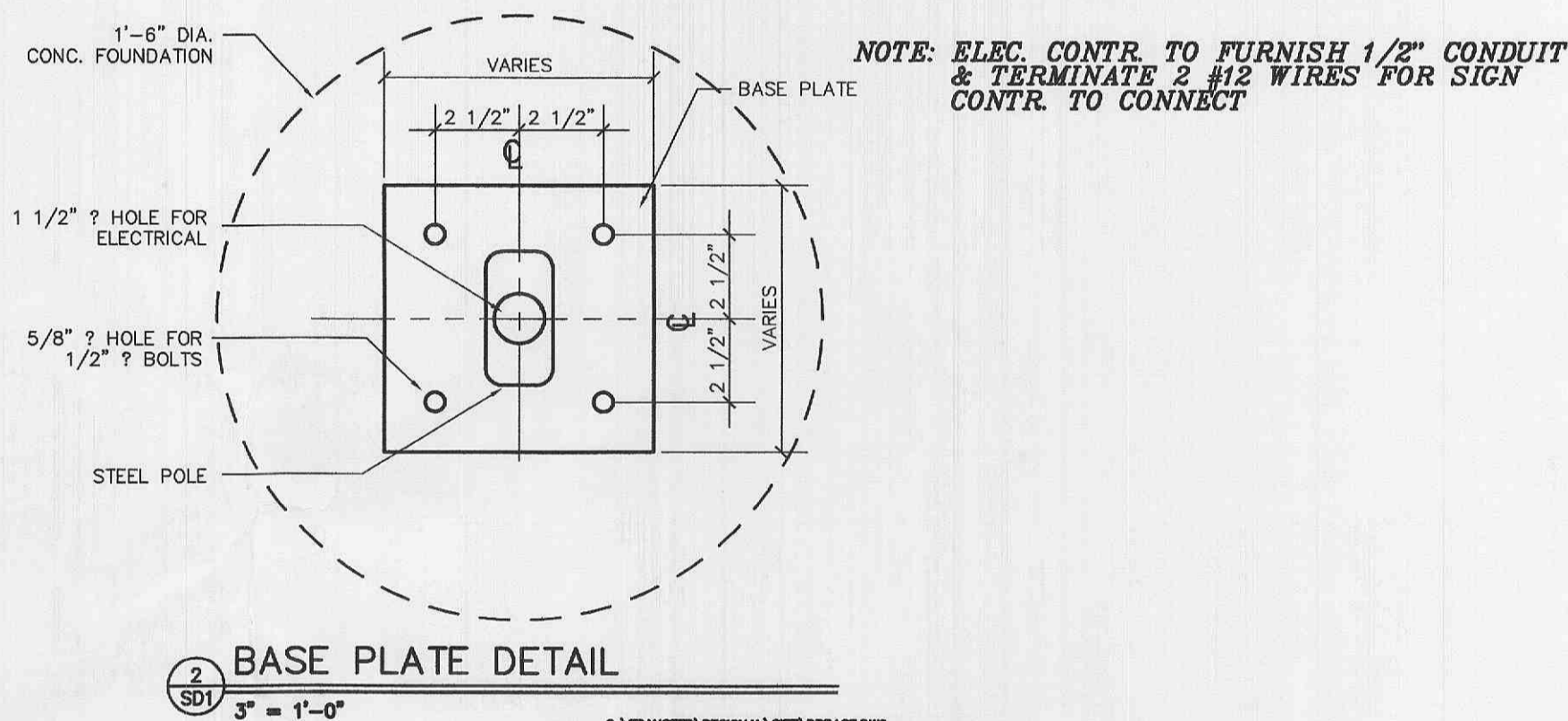
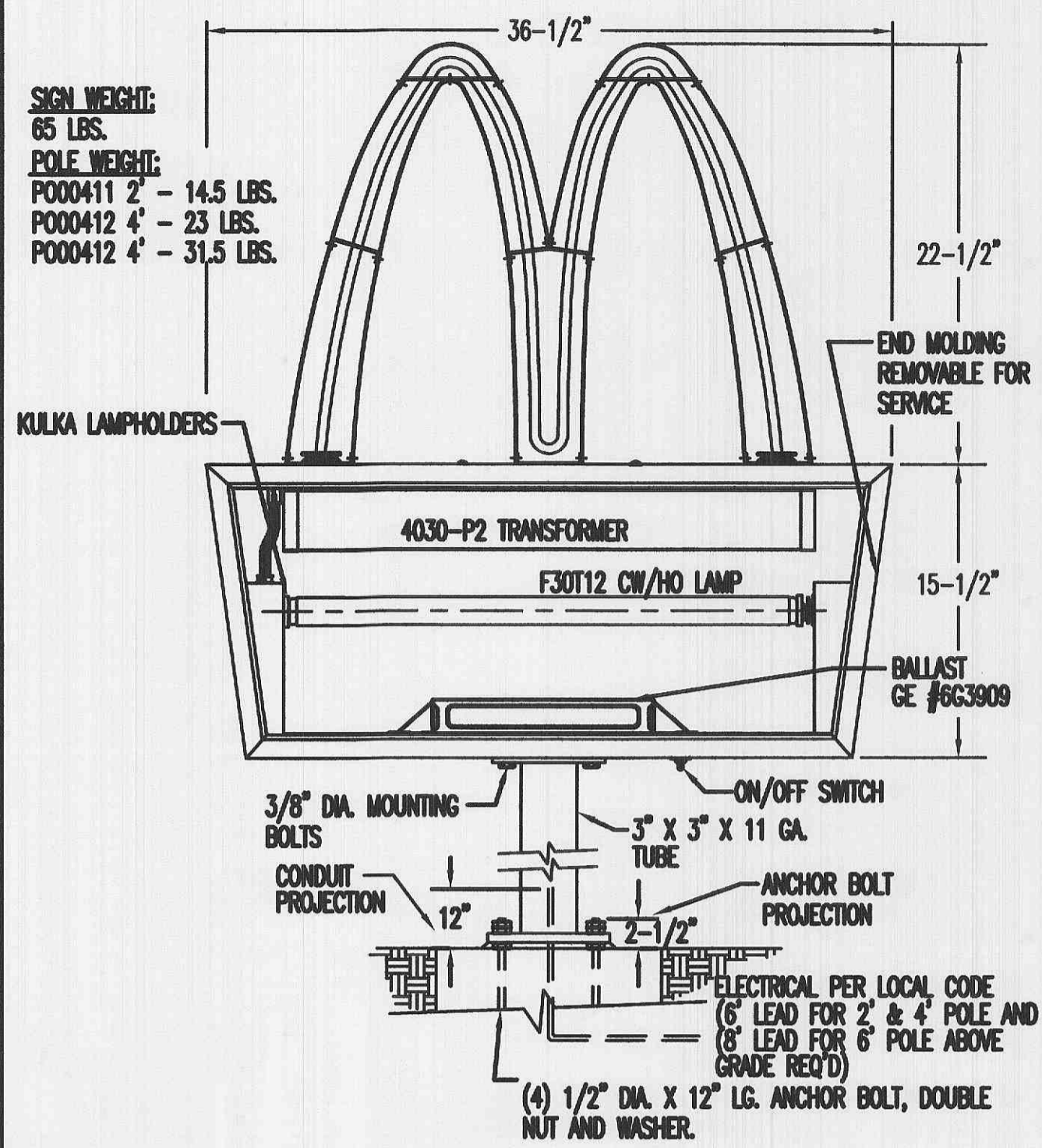
GUARD POST (NEW CONSTRUCTION) (ON REMODELS GUARD POST LOCATIONS TO BE VERIFIED BY PM)



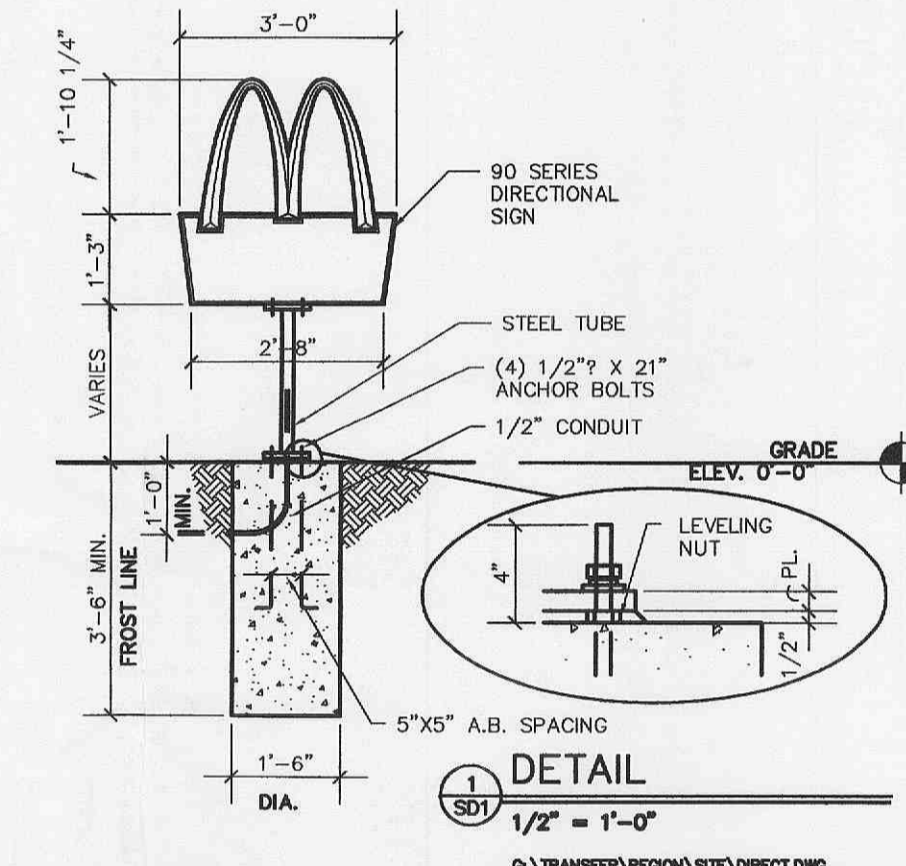
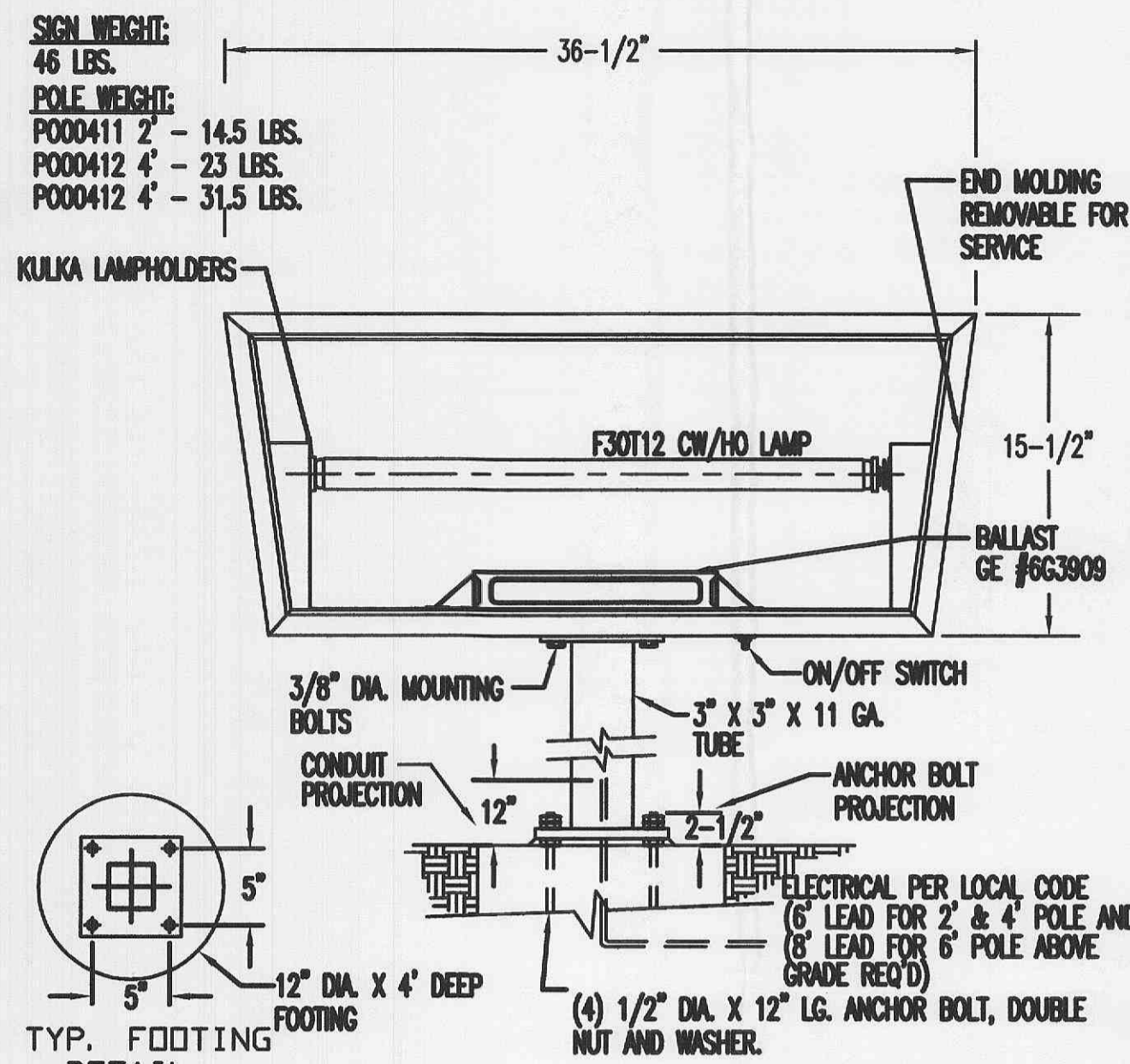
TYPICAL SECTION
PLAN W/ TYPICAL SPOT ELEVATIONS
CONCRETE PAD AT DRIVE THRU BOOTH



TRUCK/RV/BUS PARKING SIGN BASE DETAIL

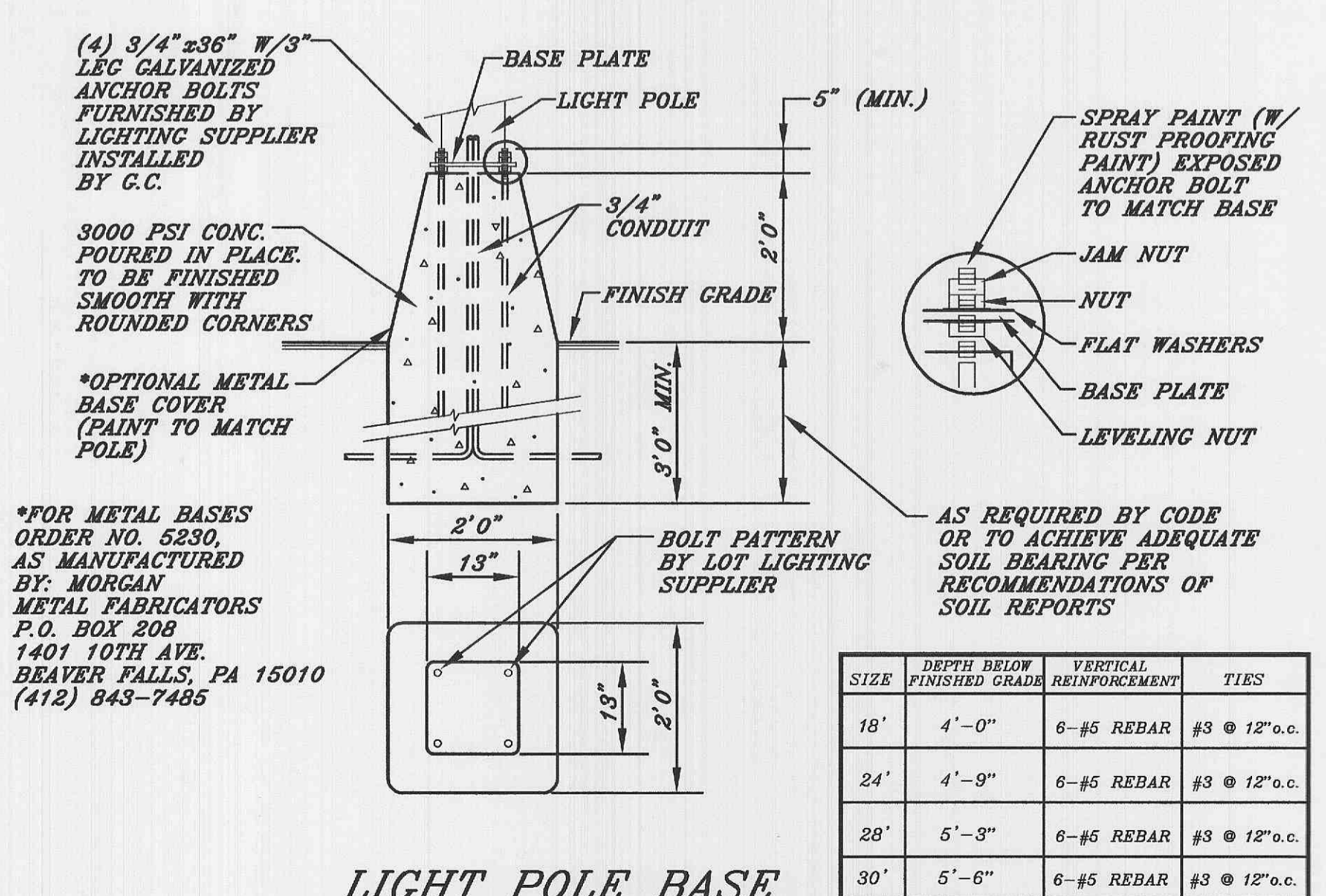


BASE PLATE DETAIL



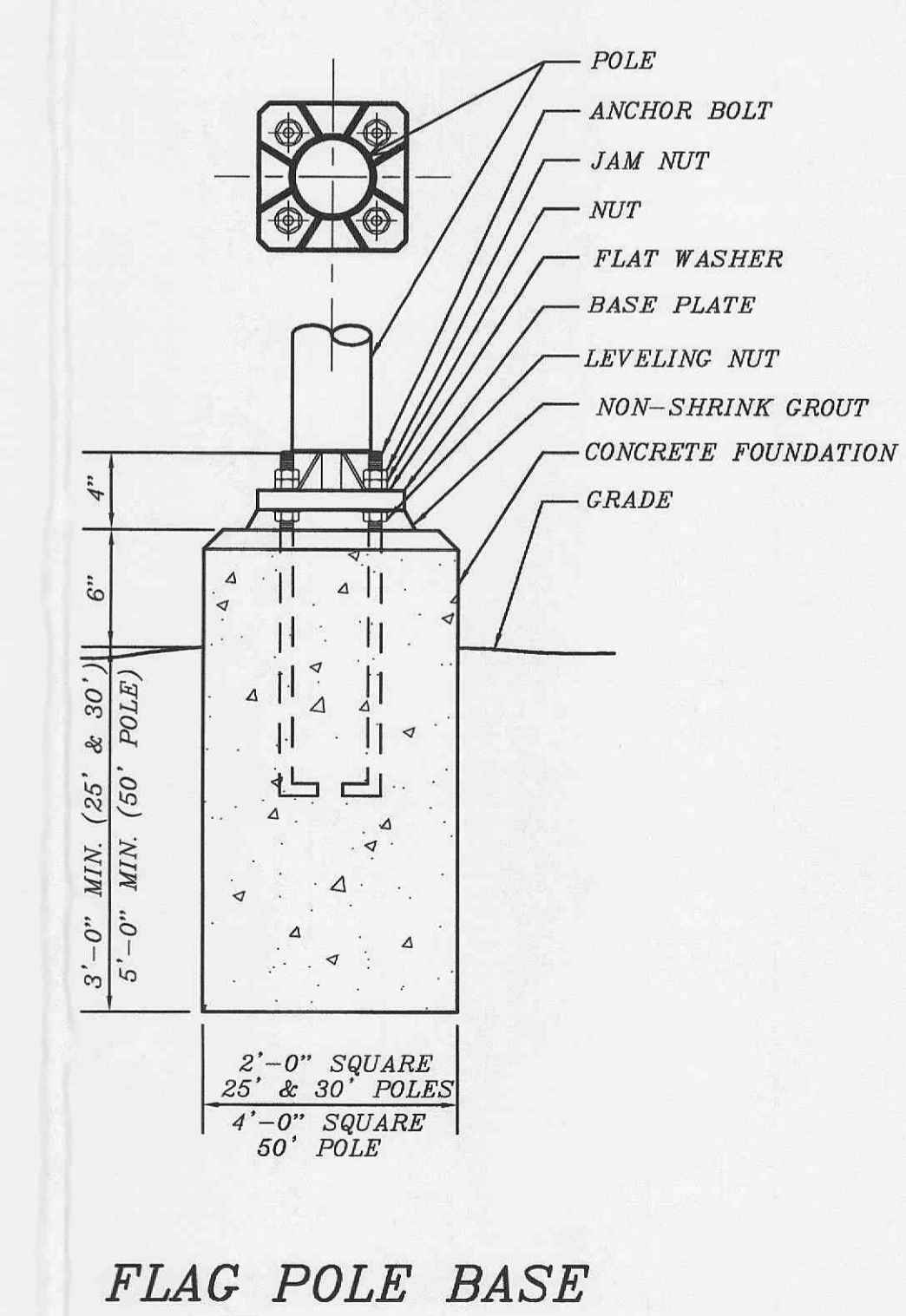
DETAIL

BASE DETAILS



LIGHT POLE BASE

SIZE	DEPTH BELOW FINISHED GRADE	VERTICAL REINFORCEMENT	TIES
18'	4'-0"	6-#5 REBAR	#3 @ 12" o.c.
24'	4'-9"	6-#5 REBAR	#3 @ 12" o.c.
28'	5'-3"	6-#5 REBAR	#3 @ 12" o.c.
30'	5'-6"	6-#5 REBAR	#3 @ 12" o.c.



FLAG POLE BASE

ENTRANCE & EXIT SIGN BASE

NO.	DATE	DESCRIPTION	BY	UNITS OF MEASURE
1			JMC	
2			JMC	
3			JMC	
4			JMC	
5			JMC	

McDonald's
THESE DRAWINGS AND SPECIFICATIONS ARE THE PROPERTY OF MCDONALD'S CORPORATION AND SHALL NOT BE COPIED OR REPRODUCED WITHOUT THEIR WRITTEN PERMISSION

TITLE	CHECKED BY	DATE CHECKED
SIGN BASE DETAILS AND DRIVE THRU DETAILS		
MATERIAL / DESCRIPTION	APPROVED BY	DATE APPROVED
DRAWN BY D. HAYDEN		
DATE DRAWN 2/20/92		
DRAWING ID	ISSUE REF	DATE ISSUED

SD3