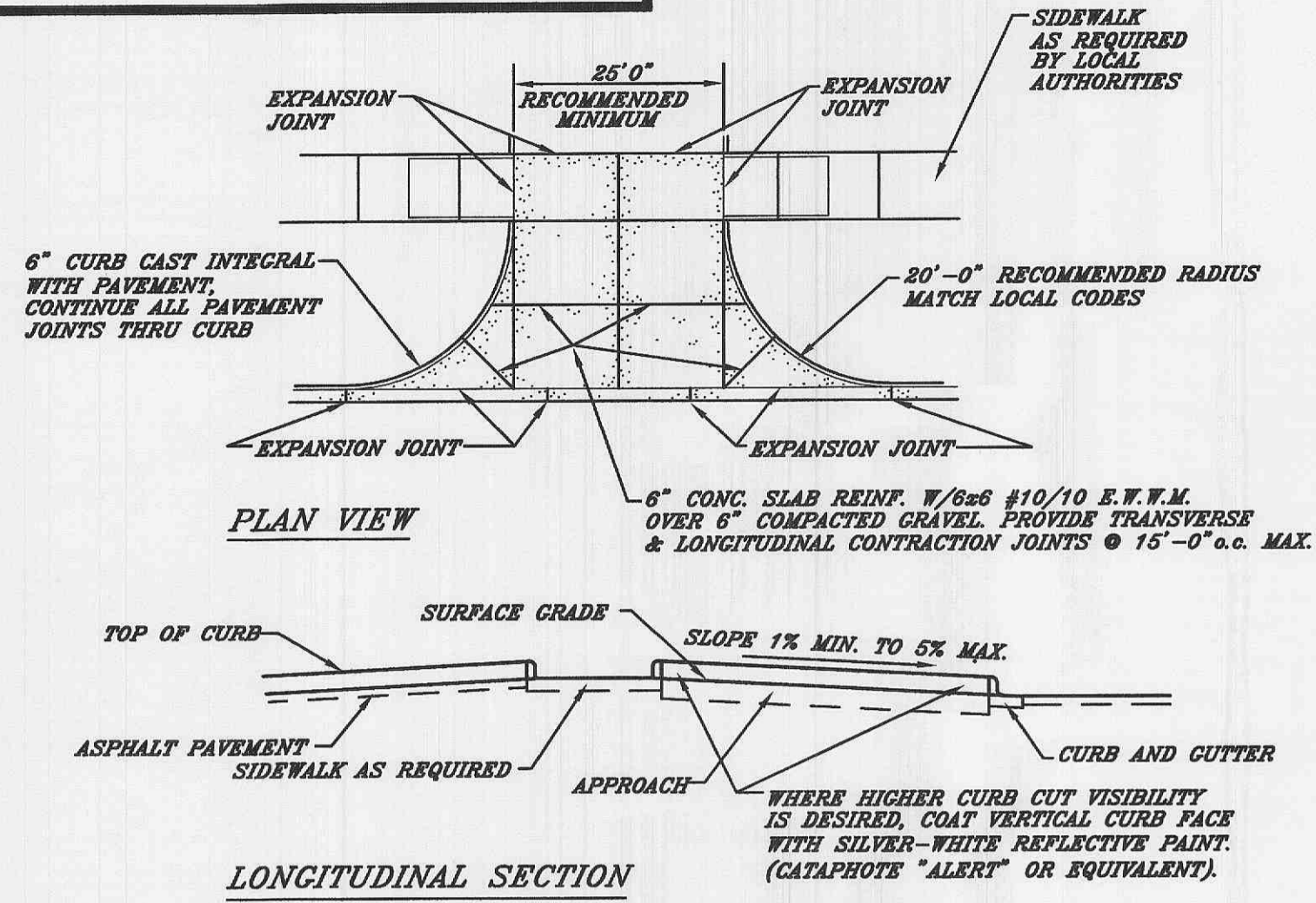
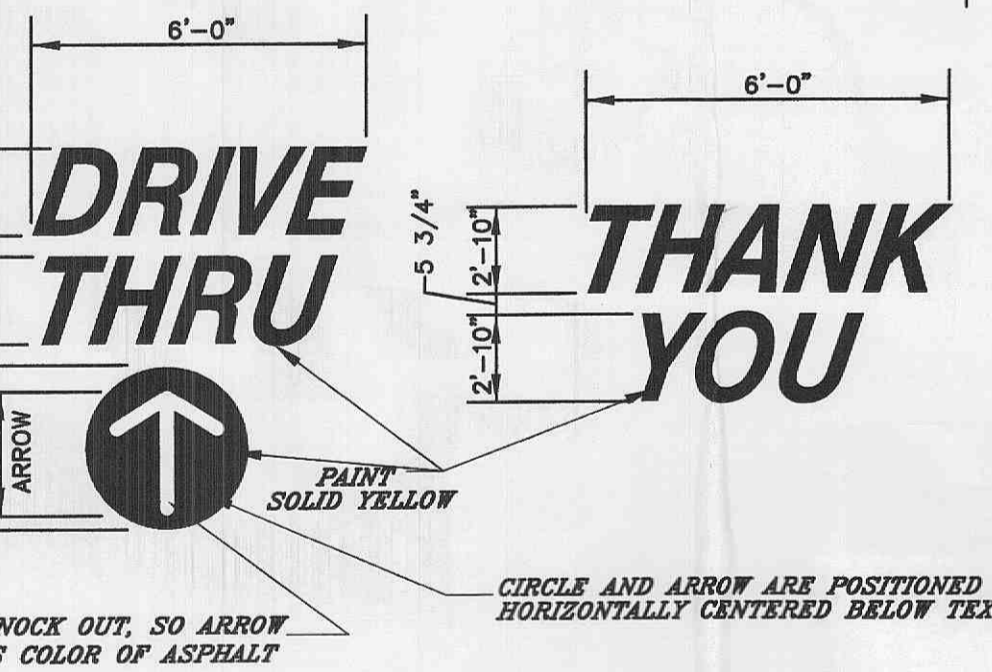
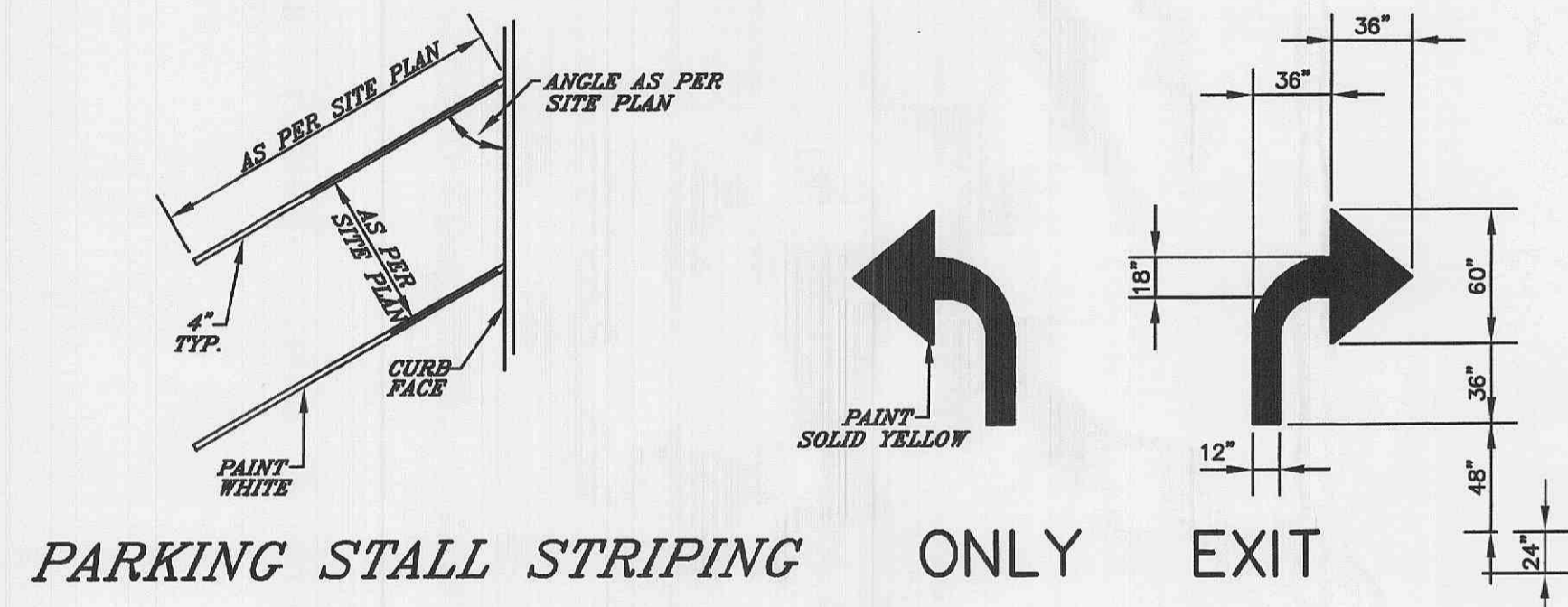


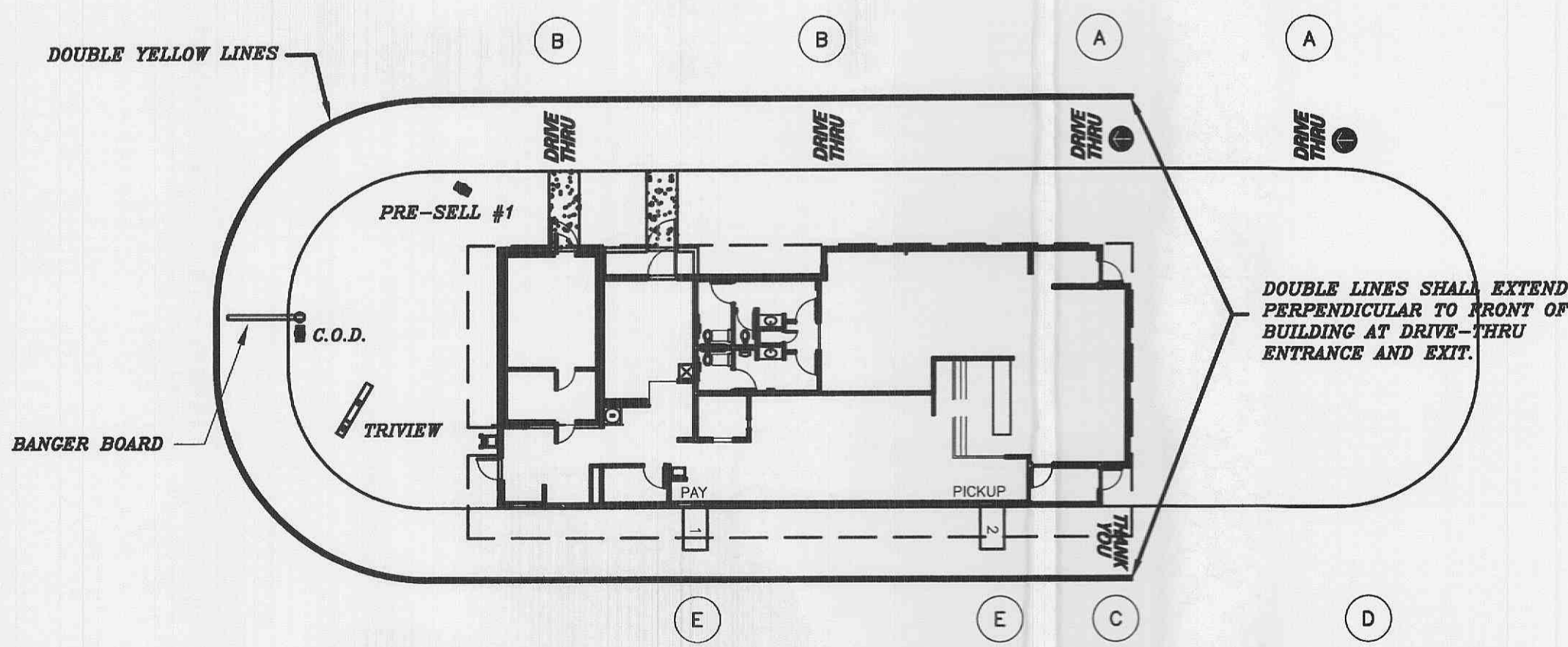
PAVEMENT DETAILS



TYPICAL APPROACH



PAVEMENT MARKING



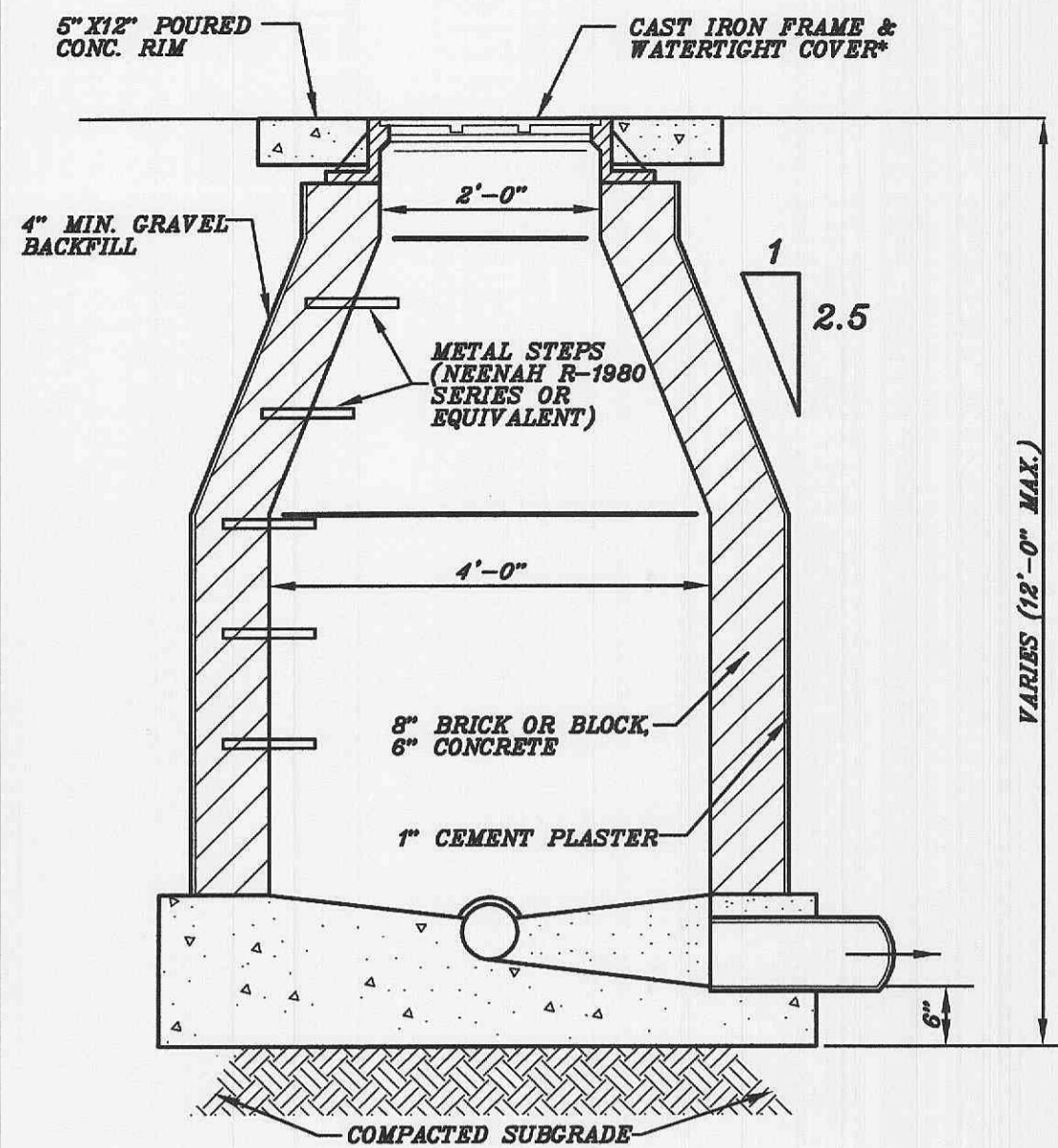
- A. "DRIVE-THRU" WITH ARROW LEADING TO PATH ENTRANCE. (*)
- B. "DRIVE-THRU" WITH NO ARROW AT PATH ENTRANCE. (*)
- C. "THANK YOU" AT PATH END.
- D. PULLED CAR AREA. LOCATION TO BE DETERMINED ON SITE.
- E. D.T. WINDOW HANGING BANNERS.

NOTE: 1. ALL ARROWS AND LETTERS SHALL BE YELLOW.

* - A MINIMUM OF (1) OF EACH. ADDITIONAL LOCATING TO BE DETERMINED ON SITE.

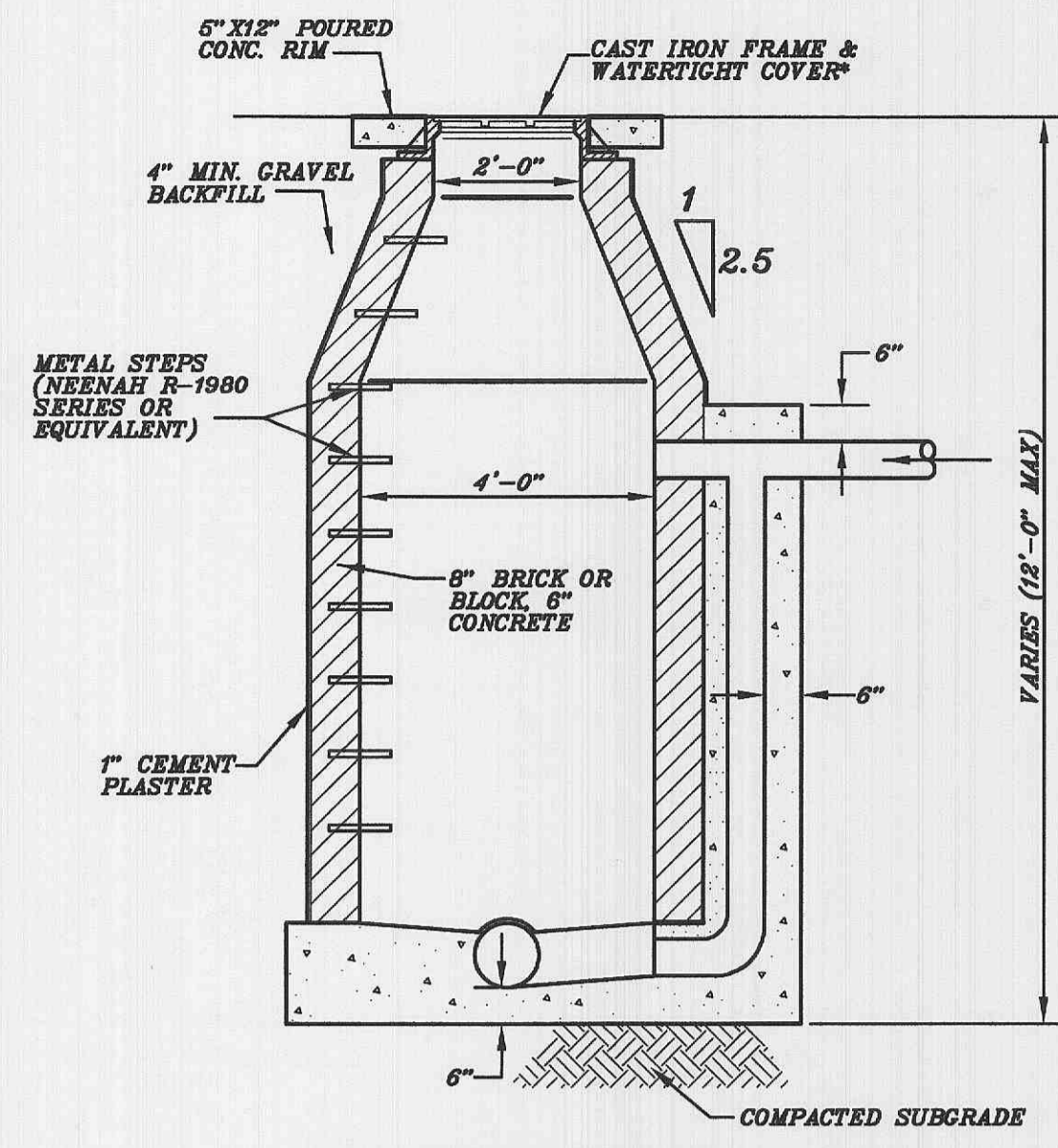
DRIVE-THRU MARKING LAYOUT

SEWER DETAILS



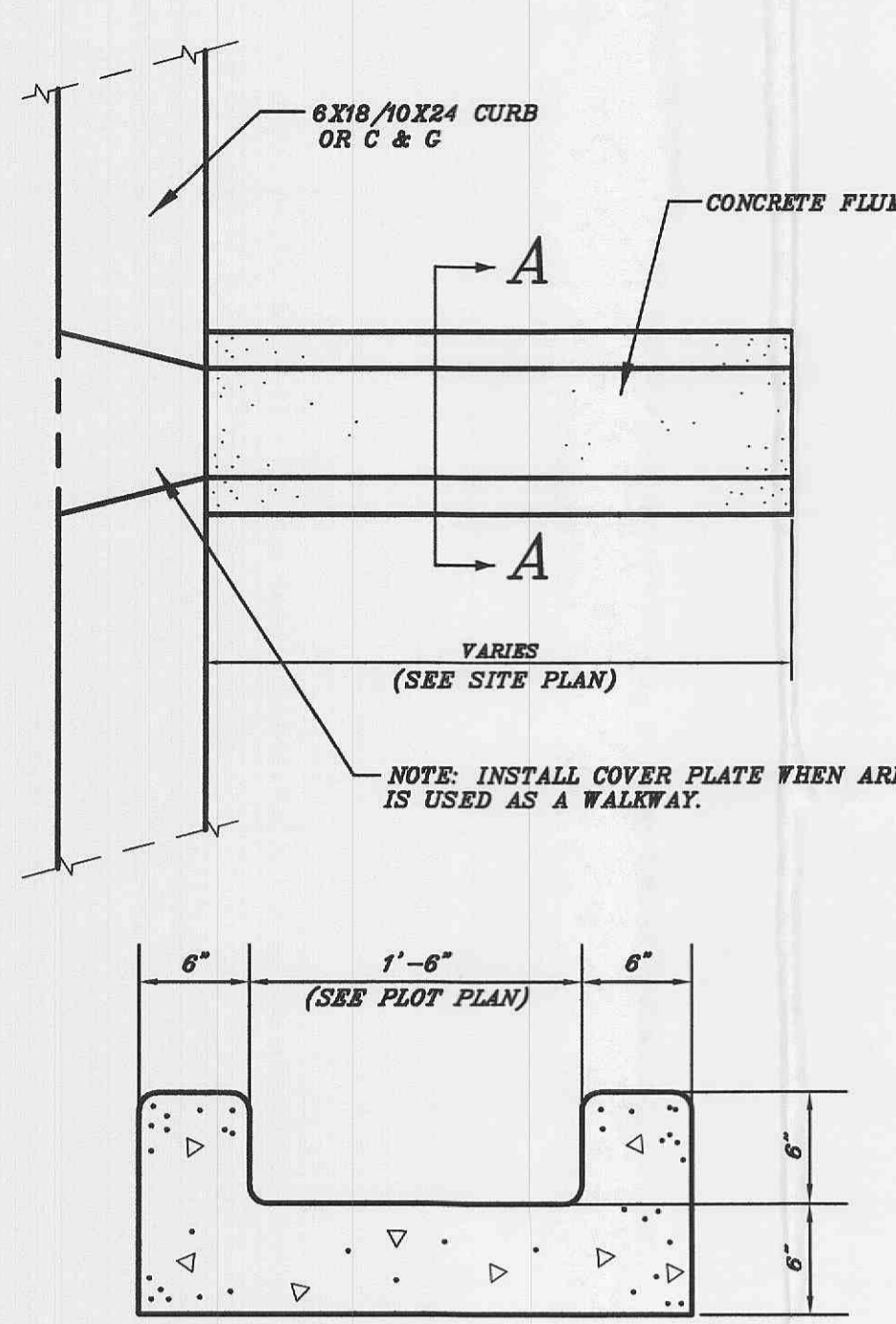
NOTE: C.C. IS TO INSTALL MANHOLE AT ANY PIPING ANGLE CHANGE GREATER THAN 45 AND AT EVERY 100' IN PIPING RUNS GREATER THAN 200' IN LENGTH.
* NEENAH R-2077-C W/LD TYPE B & NON-ROCKING BEARING SURFACE, OR EQUIVALENT

TYPICAL MANHOLE

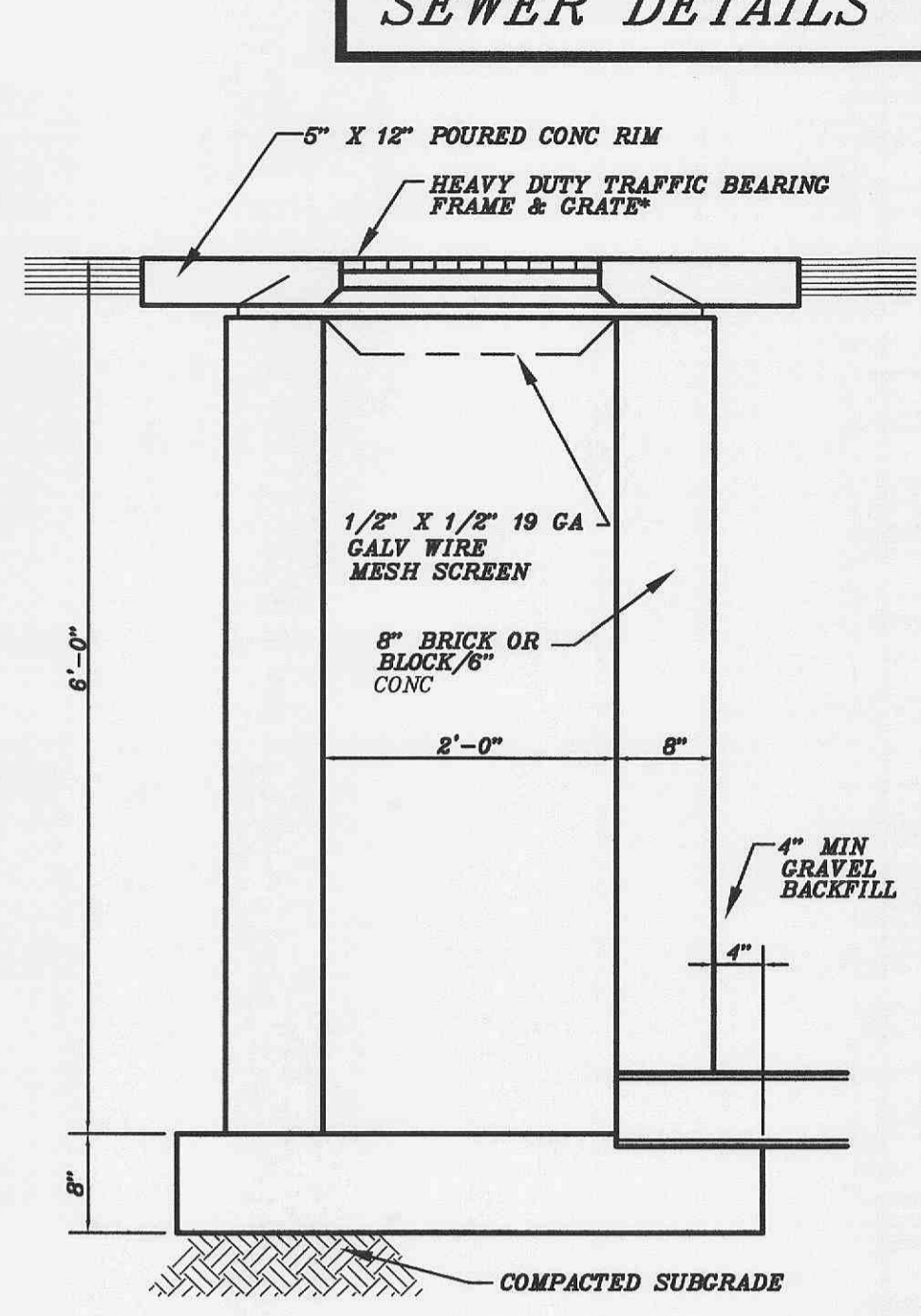


* NEENAH R-2077-C W/LD TYPE B & NON-ROCKING BEARING SURFACE, OR EQUIVALENT

DROP MANHOLE

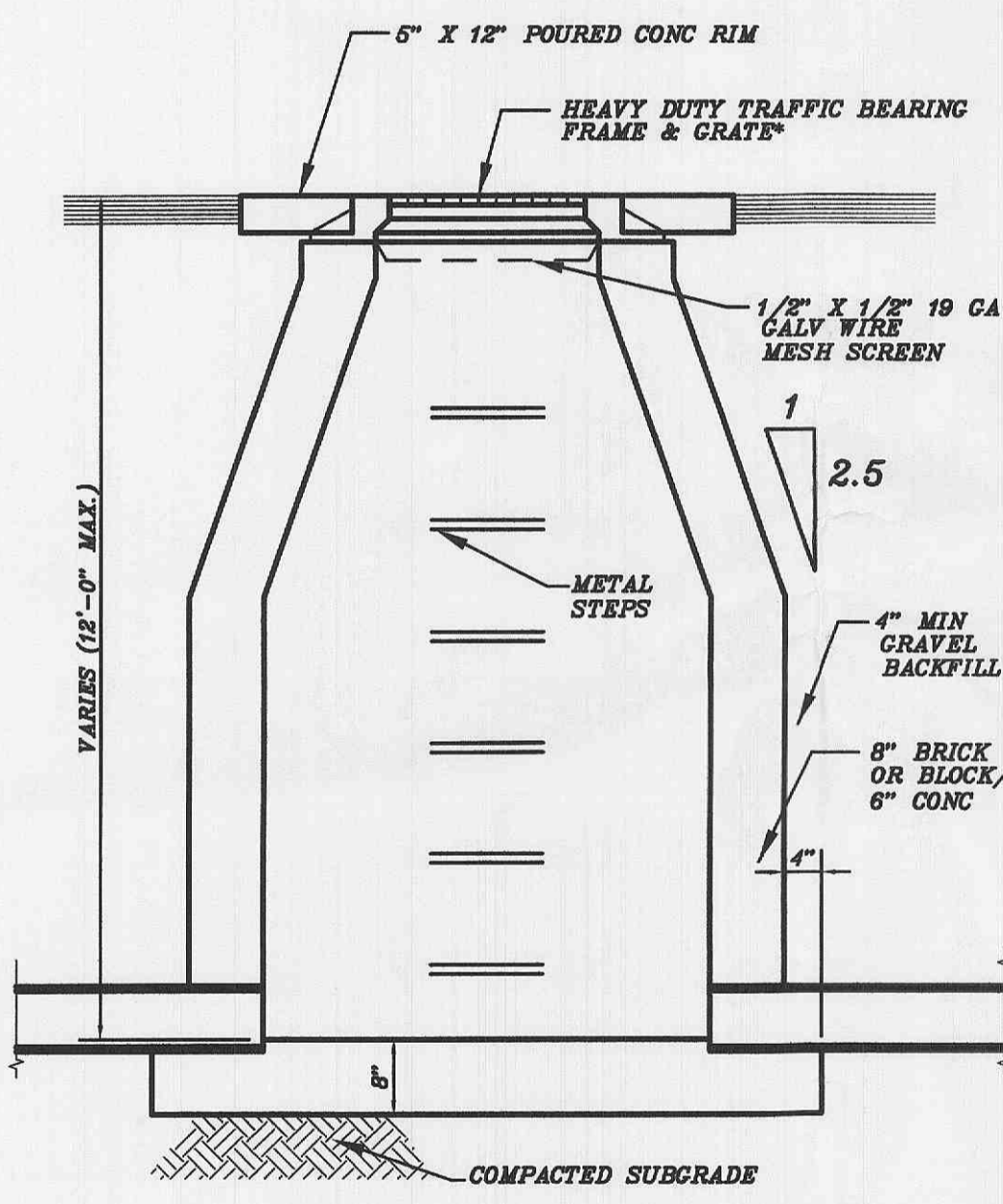


SECTION A-A CONCRETE FLUME



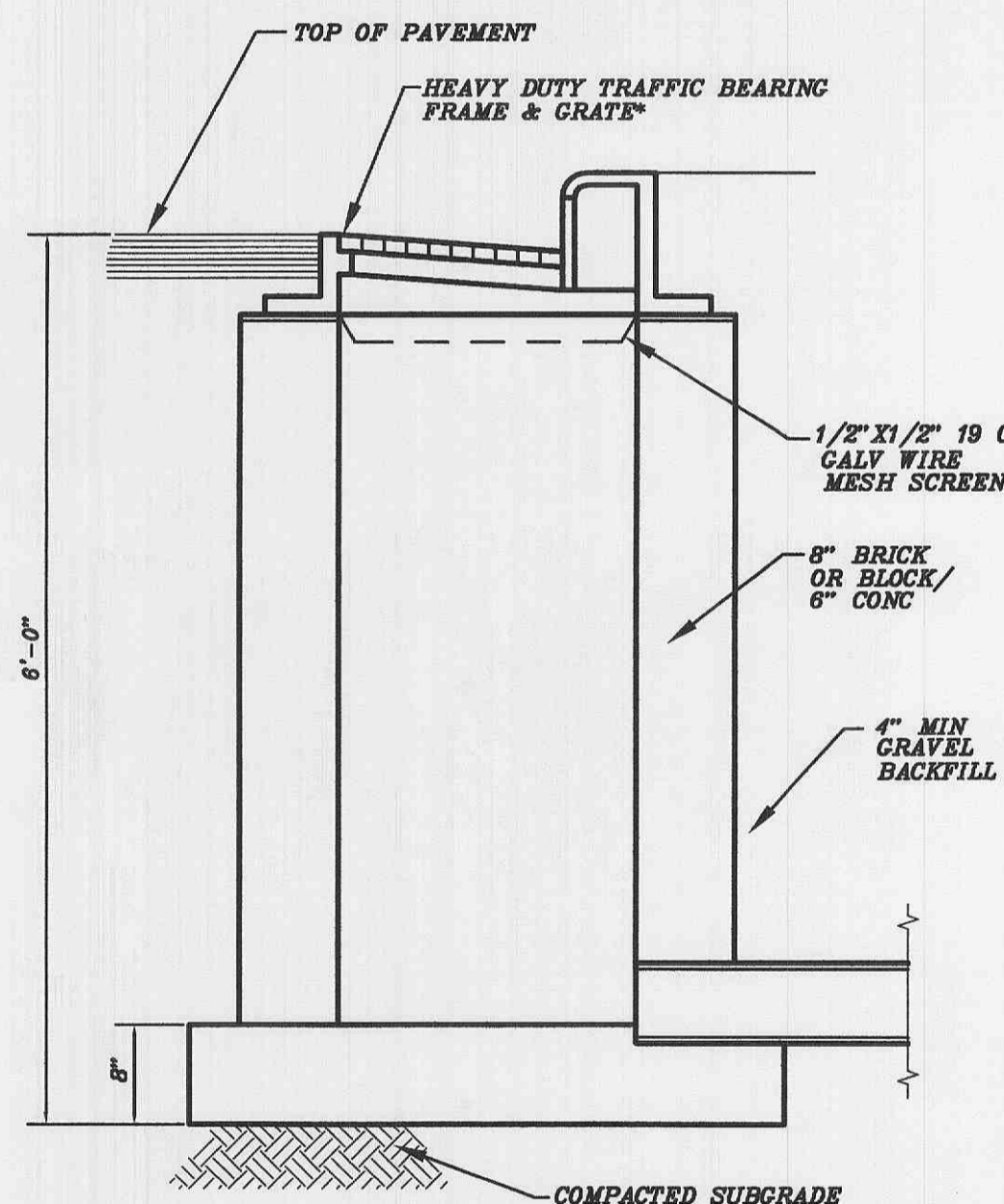
* NEENAH R-2077-C W/ GRATE TYPE E & NON ROCKING BEARING SURFACE, OR EQUIVALENT

YARD DRAINAGE INLET



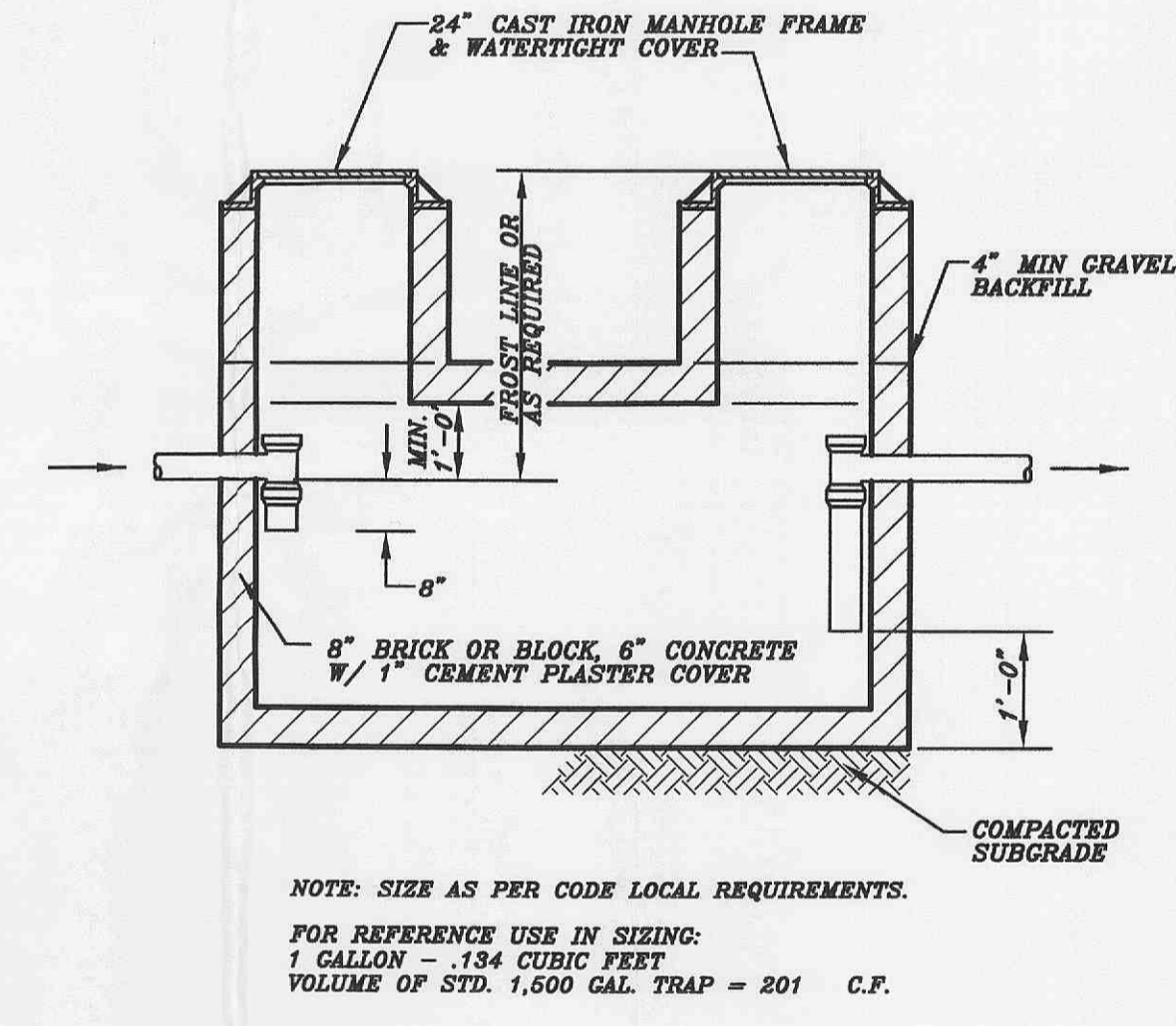
* NEENAH R-2077 W/ GRATE TYPE A OR EQUIVALENT

YARD DRAINAGE CATCH BASIN

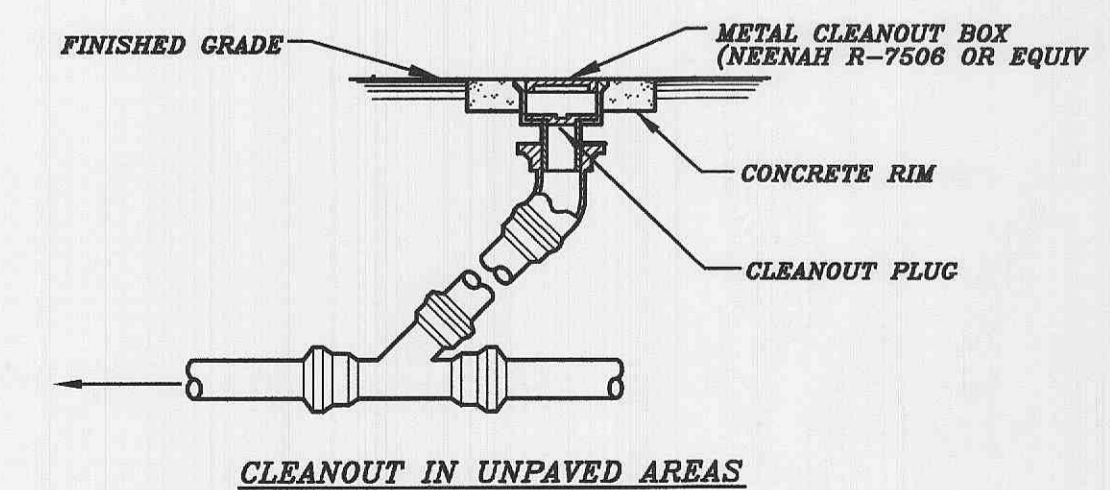


* NEENAH R-3010-C W/ GRATE TYPE E & NON ROCKING BEARING SURFACE, OR EQUIVALENT

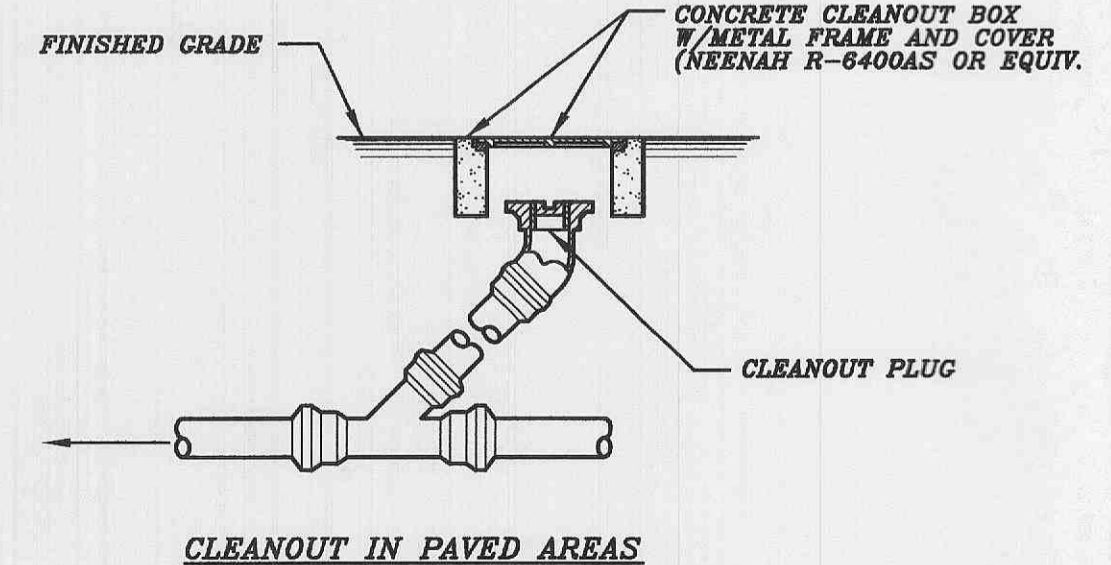
CURB DRAINAGE INLET



TYPICAL EXTERIOR GREASE TRAP



CLEANOUT IN UNPAVED AREAS



CLEANOUT IN PAVED AREAS

NOTE: C.C. IS TO INSTALL CLEANOUT AT ANY PIPING ANGLE CHANGES AND AT EVERY 50' IN PIPING RUNS GREATER THAN 100' IN LENGTH

EXTERIOR CLEANOUT

MP	UPDATE DRIVE-THRU SIGNAGE & C.O.D.	DATE ISSUED	
JMC	UPDATE DRIVE-THRU ARROWS	CHECKED BY	
JMC	UPDATE TILEBLOCK TITLE	APPROVED BY	
JMC	GENERAL REVISIONS/REVIEW	DATE APPROVED	
BY	REV DATE DESCRIPTION	ISSUE REF	
SCALE	UNITS OF MEASURE	LOCAL ADDRESS	
N.T.S.			

MCDONALD'S CORPORATION		MCDONALD'S CORPORATION	
SITE DETAILS		SITE DETAILS	
TITLE	PAVEMENT DETAILS AND SEWER DETAILS	CHECKED BY	DATE CHECKED
DRAWN BY	D. HAYDEN	APPROVED BY	DATE APPROVED
DATE DRAWN	10/11/05	ISSUE REF	
DRAWING ID			

SD4