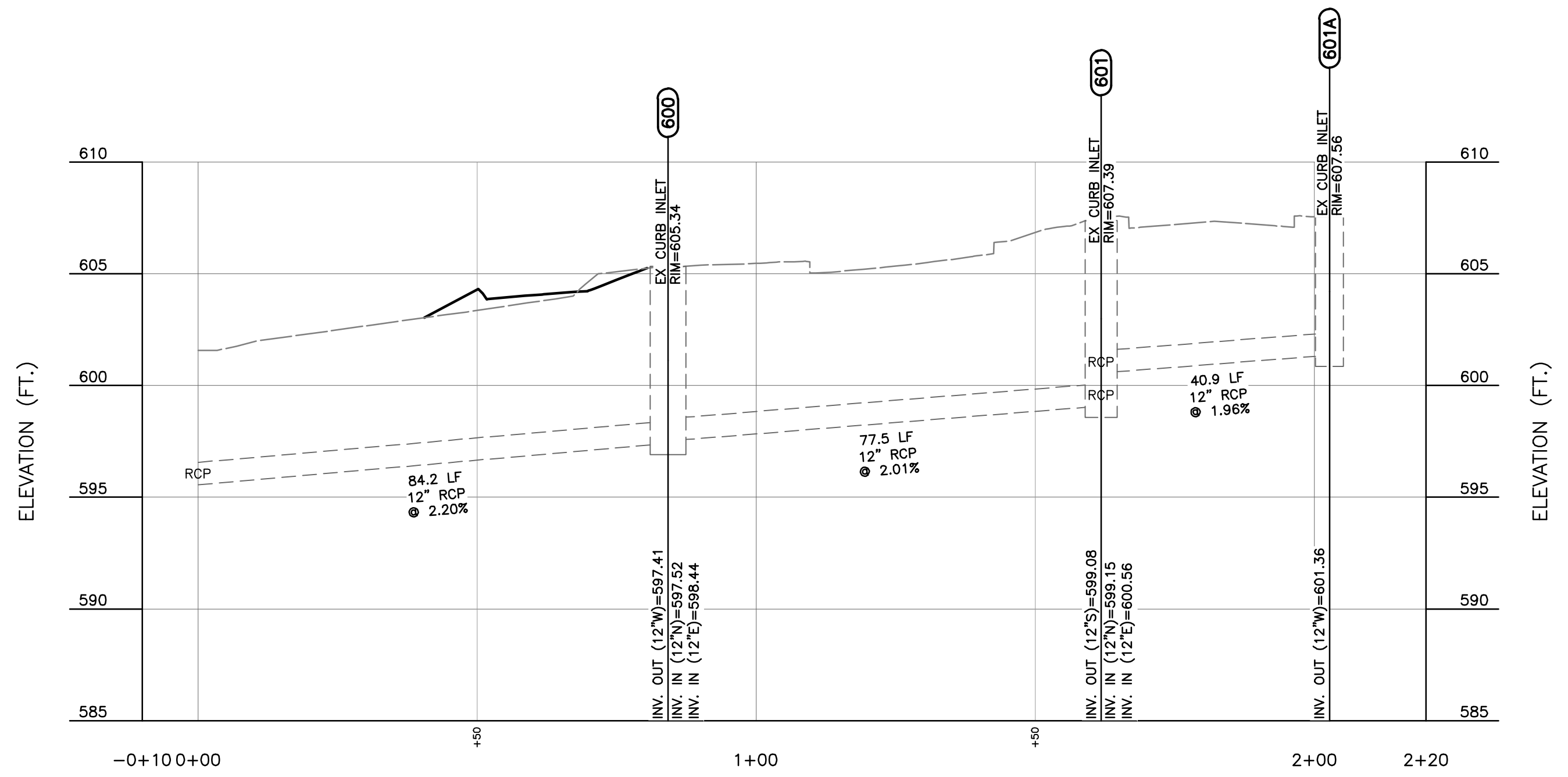
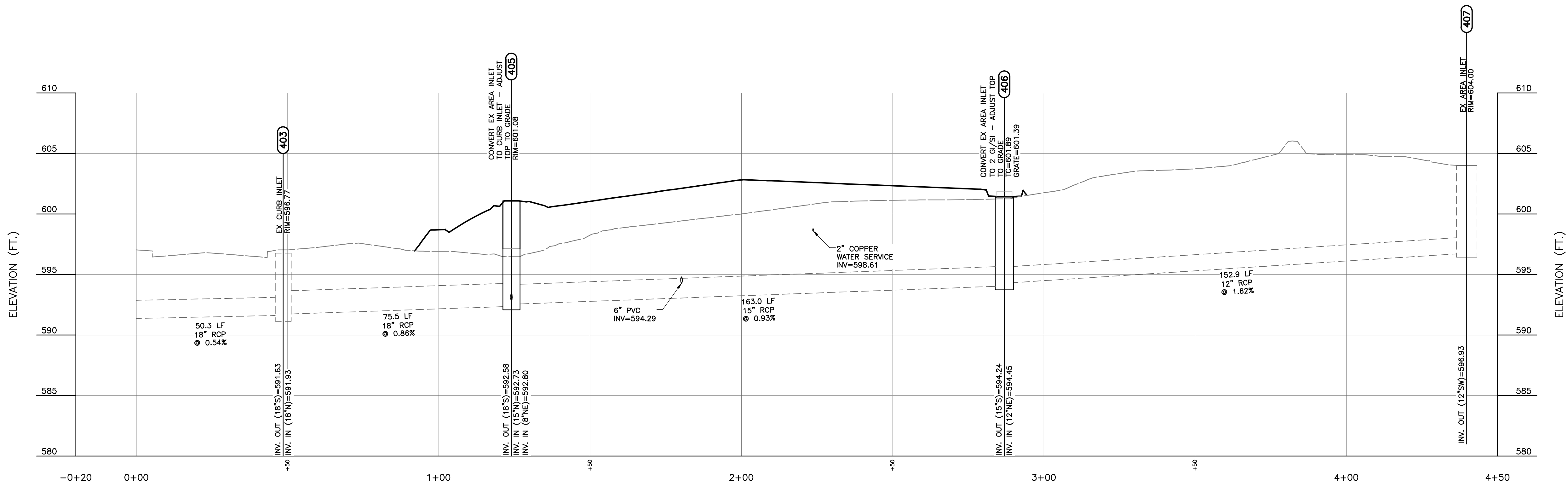


**ALIGN (1) PROFILE**  
SCALE H:1"=20'; V:1"=5'



**EX STORM 1 (1) PROFILE**  
SCALE H:1"=20'; V:1"=5'



**EX STORM 1 PROFILE**  
SCALE H:1"=20'; V:1"=5'

- NOTES:**
- REFER TO SHEET C001 FOR GENERAL NOTES AND ABBREVIATIONS.
  - CONTRACTOR SHALL REFER TO OTHER PLANS WITHIN THIS CONSTRUCTION SET FOR OTHER PERTINENT INFORMATION. IT IS NOT THE ENGINEER'S INTENT THAT ANY SINGLE PLAN SHEET IN THIS SET OF DOCUMENTS FULLY DEPICT ALL WORK ASSOCIATED WITH THIS PROJECT.



**MCDONALD'S CONSTRUCTION PLAN**  
A TRACT OF LAND BEING LOT 4 OF BRYAN ROAD COMMERCIAL, PLAT 1<sup>ST</sup> RECORDED AS DOCUMENT 2023R-038185 IN THE ST CHARLES COUNTY RECORDS, BEING IN THE SOUTHWEST QUARTER OF FRACTIONAL SECTION 30, TOWNSHIP 47 NORTH, RANGE 3 EAST OF THE FIFTH PRINCIPAL MERIDIAN, CITY OF O'FALLON, ST. CHARLES COUNTY, MISSOURI

**Civil & Environmental Consultants, Inc.**  
3000 Little Hills Expressway, Suite 102  
St. Charles, MO 63301  
314-656-4566 · 866-250-3679  
www.cecinc.com



PATRICK T. BENNETT  
(MO PE# 2002003134)  
PROFESSIONAL CIVIL ENGINEER  
HAND SIGNATURE ON FILE

DRAWN BY:	MNL
CHECKED BY:	GAS
APPROVED BY:	PTB
PROJECT NO:	398-386

**Developer / Owner Information**  
**MCDONALD'S RESTAURANT**  
NSN 43008 (024-1305)  
962 BRYAN ROAD  
O'FALLON, MISSOURI

**SEWER PROFILES**

P+Z No. 24-00803  
Approval Date 04/08/2024  
Permit No.

Page No.  
**C501**