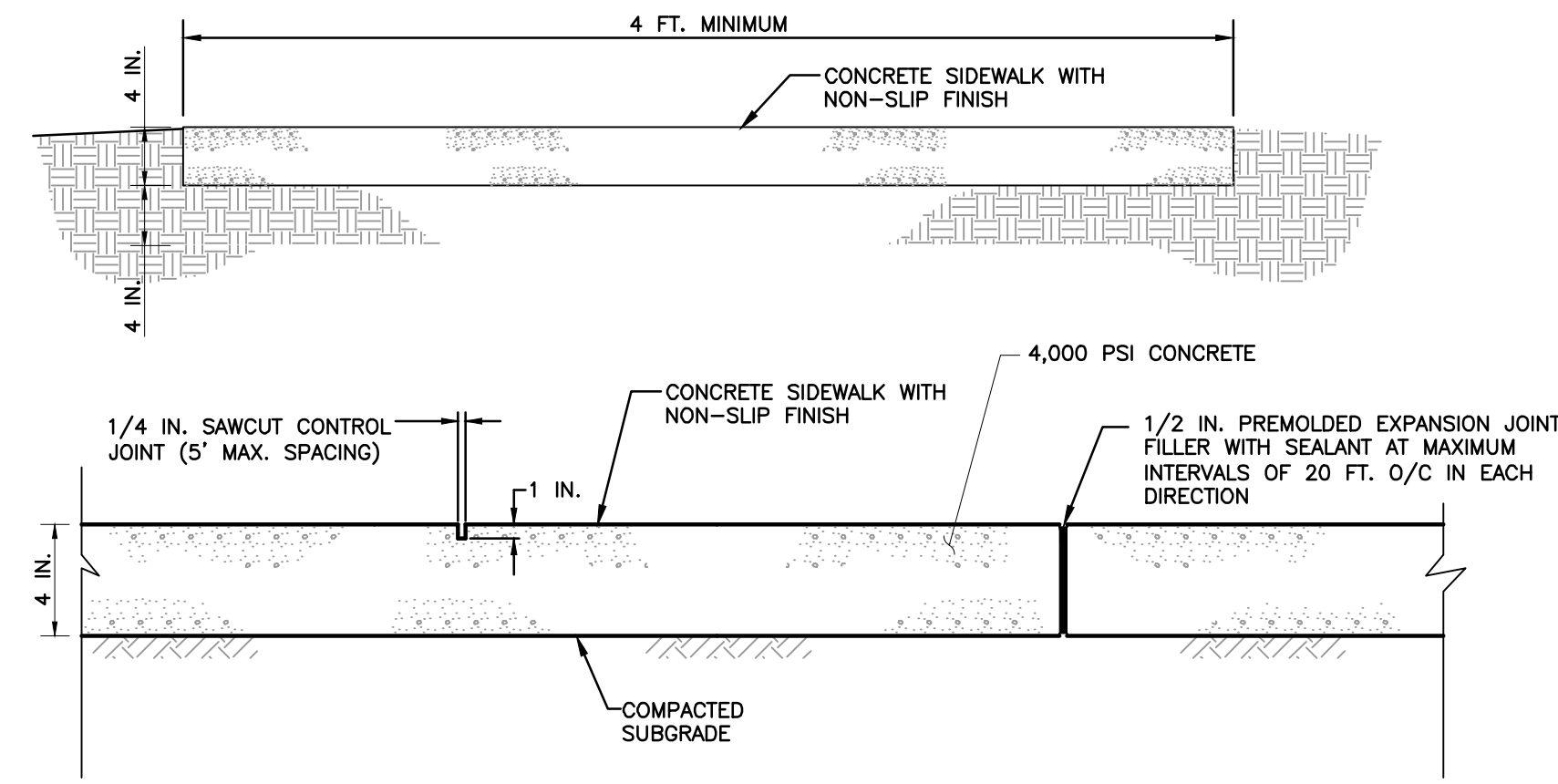


- NOTE:
- SIGN MAY BE AFFIXED TO WALL SURFACE
 - SIGN MUST NOT PROTRUDE MORE THAN 4" (IF WALL MOUNTED) OR 12" IF POST MOUNTED HORIZONTALLY INTO PEDESTRIAN PATH.

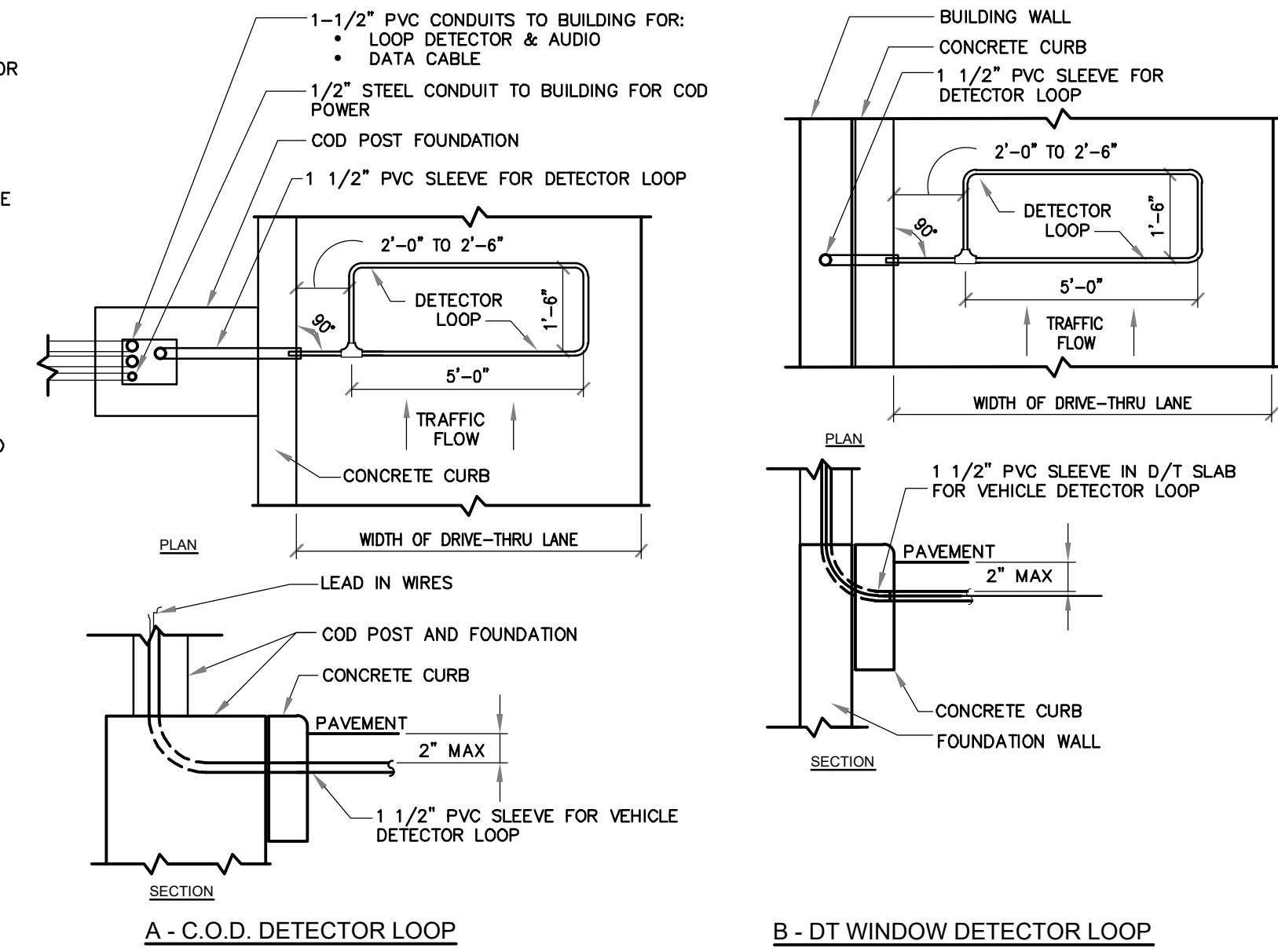
DETAIL #11
ACCESSIBLE PARKING SIGN
N.T.S.



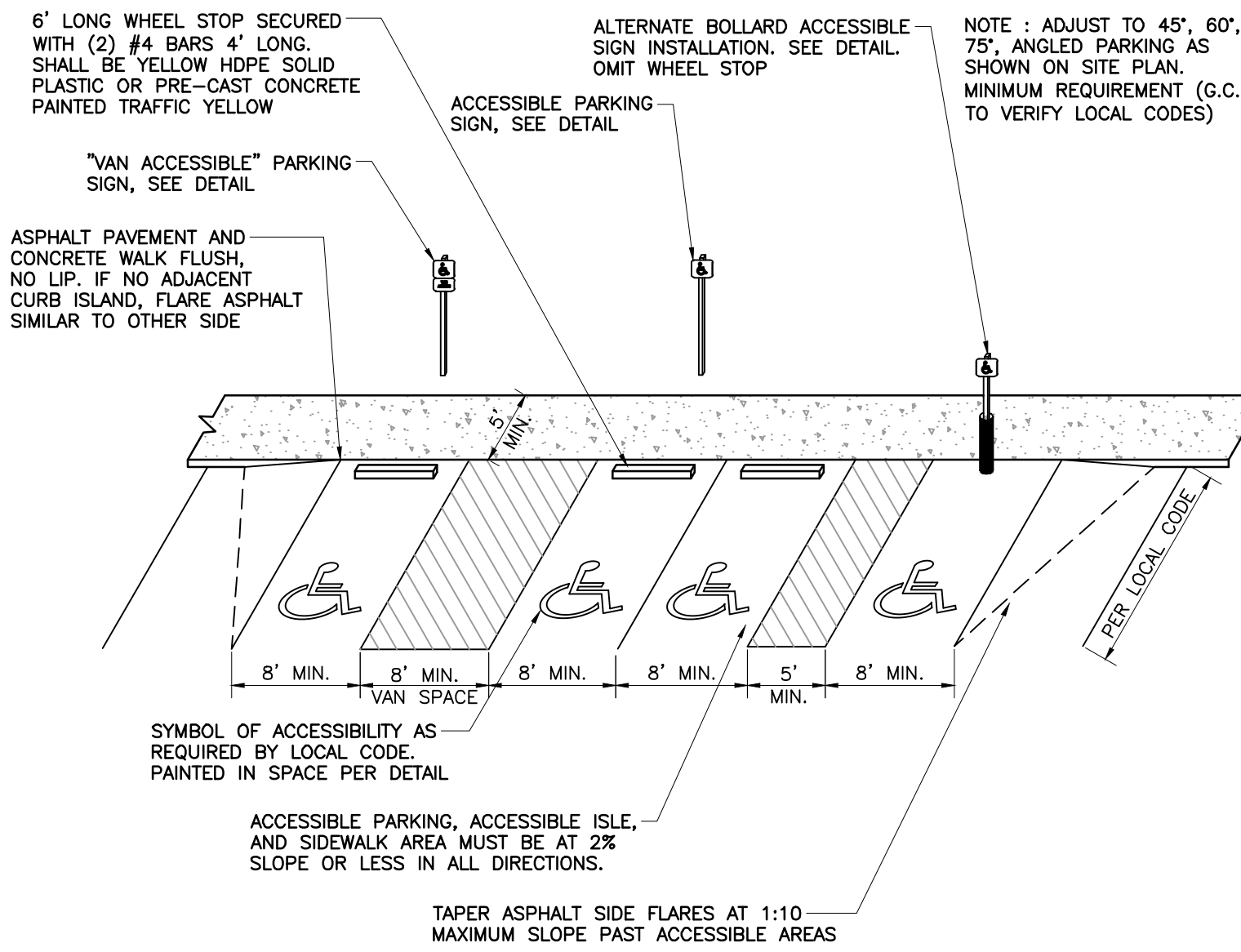
- NOTES:
- PROVIDE AN 8 IN. HAUNCH AND 1/2 IN. EXPANSION JOINT FILLER WITH SEALANT WHERE THE CONCRETE SIDEWALK ABUTS THE BUILDING.

DETAIL #12
CONCRETE SIDEWALK
N.T.S.

- NOTES**
- VERIFY CONDUIT SIZES AND LAYOUT WITH DETECTOR LOOP MANUFACTURER.
 - CENTER VEHICLE DETECTOR LOOP IN DRIVE THRU LANE. INSTALL PER MFR. RECOMMENDATIONS.
 - NO STEEL (REBAR OR ELECTRICAL WIRE) SHALL BE USED WITHIN 2' OF LOOP.
 - DETECTOR LOOP MANUFACTURERS:** DETECTOR LOOPS MAY BE BY ONE OF THE FOLLOWINGS COMPANIES OR EQUAL.
JM: 1-800-328-0033
HME: 1-800-848-4468
 - DETECTOR LOOP MATERIAL:** PVC TUBING 1/2" I.D. 100 PSI LOOP MADE FROM ONE LENGTH OF THIN FOURTEEN GAUGE STRANDED WIRE. LEAD-IN IS PRE-TWISTED AT FACTORY.
 - DETECTOR LOOP CONSTRUCTION:** FORMED WITH ONE CONTINUOUS LENGTH OF PVC WITH NO SHARP CORNERS AS DETAILED, WIRE LOOPED, FORMED, & PITTAILED AS DETAILED.

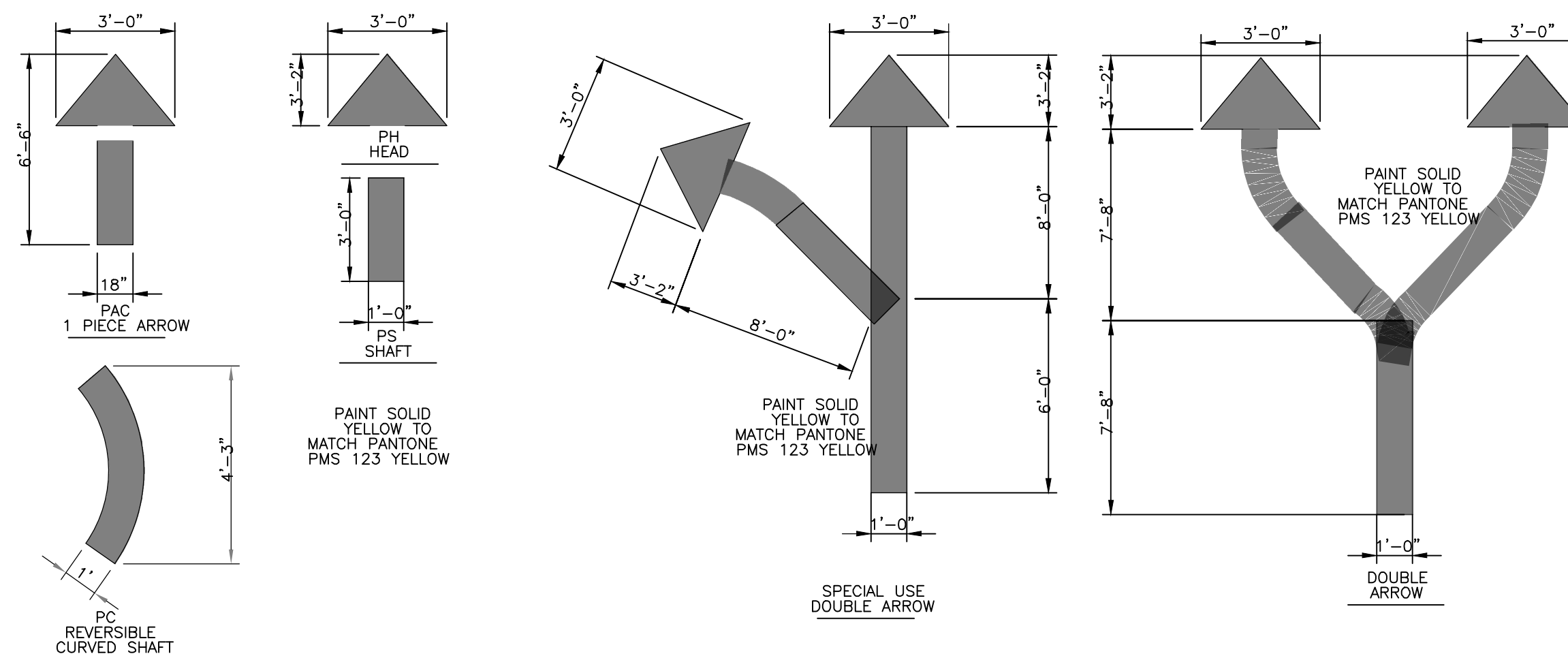


DETAIL #14
DETECTOR LOOP
N.T.S.



- NOTES:
- ACCESSIBLE PARKING SPACE AND ACCESSIBLE ISLE: MAXIMUM 2.0% SLOPE IN ANY DIRECTION.
 - ASPHALT TO CONCRETE BLENDED TRANSITION TO BE COMPLETELY FLUSH, NO LIP.
 - PLACEMENT AND STRIPING SHOWN IN DETAIL IS SCHEMATIC, SEE SITE PLAN FOR CONFIGURATION.
 - ACCESSIBLE ISLE SHALL BE PAINT STRIPED AT 45° ANGLE, EACH 6" WIDE STRIPE AT 24" ON CENTER.

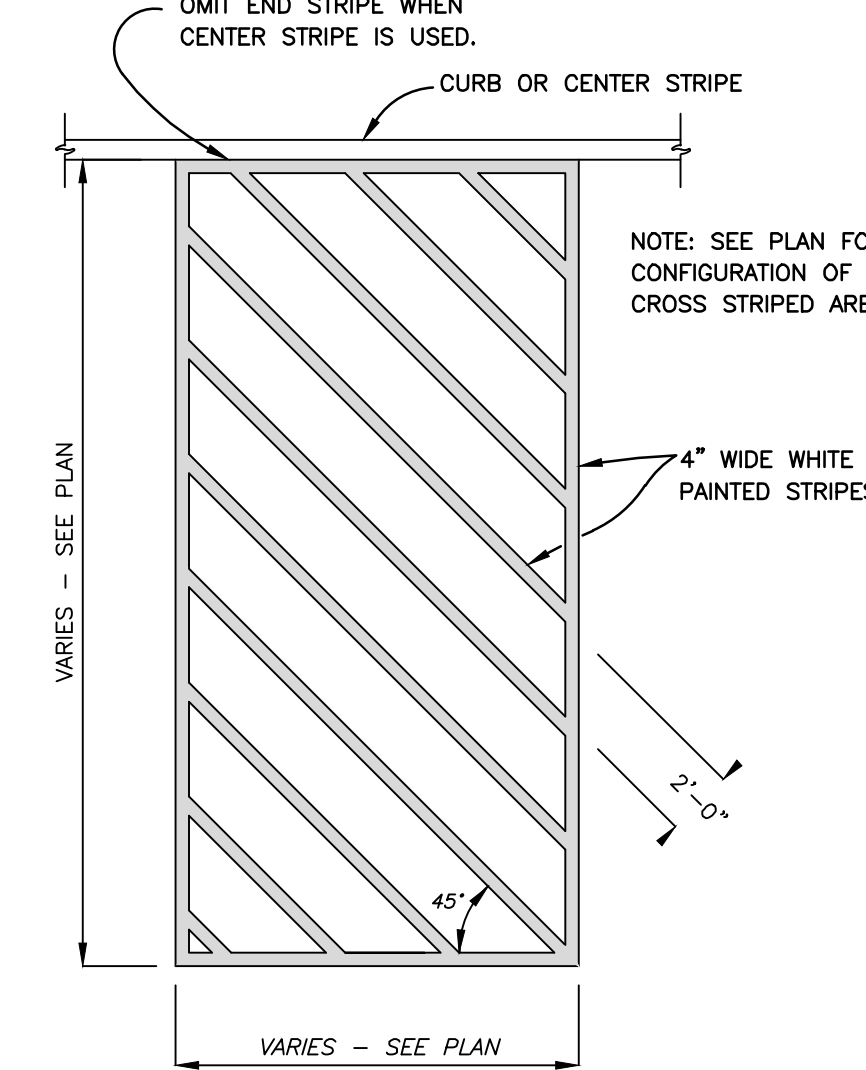
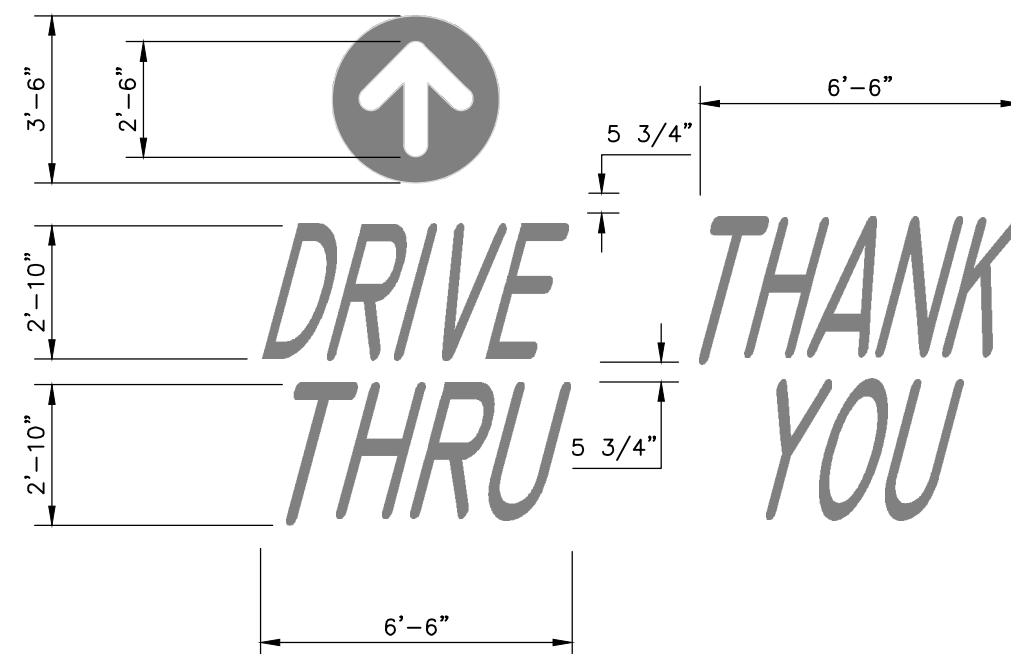
DETAIL #13
ACCESSIBLE PARKING
N.T.S.



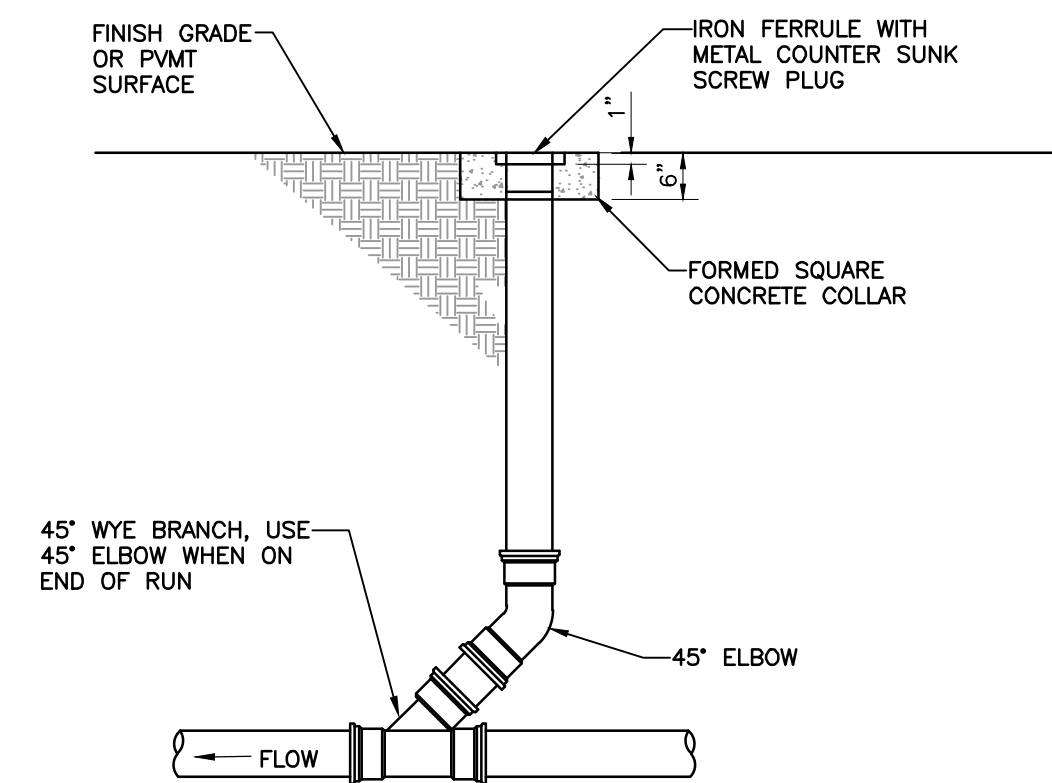
DETAIL #24
DIRECTIONAL ARROWS
N.T.S.

- PAVEMENT BRANDING NOTES:**
- YELLOW PAINT (PMS123) IS USED FOR ALL DRIVE-THRU MARKINGS.
 - THE WORDS 'DRIVE-THRU' AND THE CIRCLE ARROW ARE PLACED AT ALL ENTRANCES TO THE LOT APPROX. 25' TO 30' FROM THE CURB OR SIDEWALK.
 - THE WORDS 'DRIVE-THRU' SHOULD BE CENTERED IN THE DRIVEWAY FOR ONE WAY TRAFFIC (ON THE INGRESS SIDE OF THE DRIVE AISLE IF THERE IS TWO WAY TRAFFIC).
 - THE CIRCLE DIRECTIONAL ARROW SHOULD BE CENTERED ABOVE THE WORD 'DRIVE' APPROX. 5' IN TO THE PARKING LOT.
 - IF FIVE OR MORE ARROWS ARE NEEDED TO DIRECT CARS TO THE DRIVE-THRU, PLAN THE CORRECT PLACEMENT OF THE ARROWS TO INCLUDE THE APPLICATION OF THE WORDS 'DRIVE-THRU' WITH AN ARROW CENTERED ABOVE THE WORD 'DRIVE,' ORIENTED TO THE DECISION POINT.
 - THE ARROW ART KNOCKS OUT SO THAT THE ARROW IS THE COLOR OF THE UNDERLYING PAVEMENT.

DETAIL #25
PAVEMENT BRANDING
N.T.S.



DETAIL #26
STRIPING DETAIL
N.T.S.



- NOTE:
- CLEANOUT PVC SIZE TO MATCH THE PIPE SIZE OF THE SEWER TO WHICH IT IS CONNECTED.
 - ALL PVC PIPE AND FITTINGS SHALL BE SDR 35 WITH RUBBER GASKETED JOINTS.

DETAIL #15
SEWER CLEANOUT
N.T.S.

MCDONALD'S
CONSTRUCTION PLAN
A TRACT OF LAND BEING LOT 4 OF 'BRYAN ROAD COMMERCIAL, PLAT 1' RECORDED AS DOCUMENT 2023R-038185 IN THE ST CHARLES COUNTY RECORDS, BEING IN THE SOUTHWEST QUARTER OF FRACTIONAL SECTION 30, TOWNSHIP 47 NORTH, RANGE 3 EAST OF THE FIFTH PRINCIPAL MERIDIAN, CITY OF O'FALLON, ST. CHARLES COUNTY, MISSOURI

Civil & Environmental Consultants, Inc.
3000 Little Hills Expressway, Suite 102
St. Charles, MO 63301
314-656-4566 · 866-250-3679
www.cecinc.com



PATRICK T. BENNETT
MO PE# 2002003134
PROFESSIONAL CIVIL ENGINEER
*HAND SIGNATURE ON FILE

MLL	GAS	FTB	388-966
DRAWN BY:	CHECKED BY:	APPROVED BY:	PROJECT NO:

Developer / Owner Information
MCDONALD'S RESTAURANT
NSN 43008 (024-1305)
962 BRYAN ROAD
O'FALLON, MISSOURI

P+Z No. 24-00803
Approval Date 04/08/2024
Permit No.

Page No.
C801