

\*2015 IBC  
 \* RISK CATEGORY I  
 \* 105 MPH WIND SPEED, EXP. C  
 \* (2) POLES, (1) FOOTING

**GENERAL NOTES:**  
 1. SEE MANUFACTURERS DRAWINGS FOR ADDITIONAL DETAIL AND DIMENSIONS.  
 2. SIGN CABINET AND CONNECTION BY PERSONA.  
 3. ANCHOR BOLTS, NUTS & WASHERS SHALL BE SHIPPED AS AN ASSEMBLY FROM SIGNLIGHTING MANUFACTURER.  
 4. DO NOT CUT ANCHOR BOLTS AFTER INSTALLATION OF THE POLE.

NOTE:  
 INCLUDE COMPLETION PHOTOS OF MOUNTING / CONNECTION POINTS INCLUDING FOUNDATION, BASE PLATES, ANCHOR BOLTS, MATCH PLATE, WALL MOUNT, AND WELDING CONNECTIONS IF APPLICABLE.

INSTALLER TO FURNISH:  
 1. INSTALLER TO BE SURE SIGNS ARE PROPERLY CONNECTED AND GROUNDED.

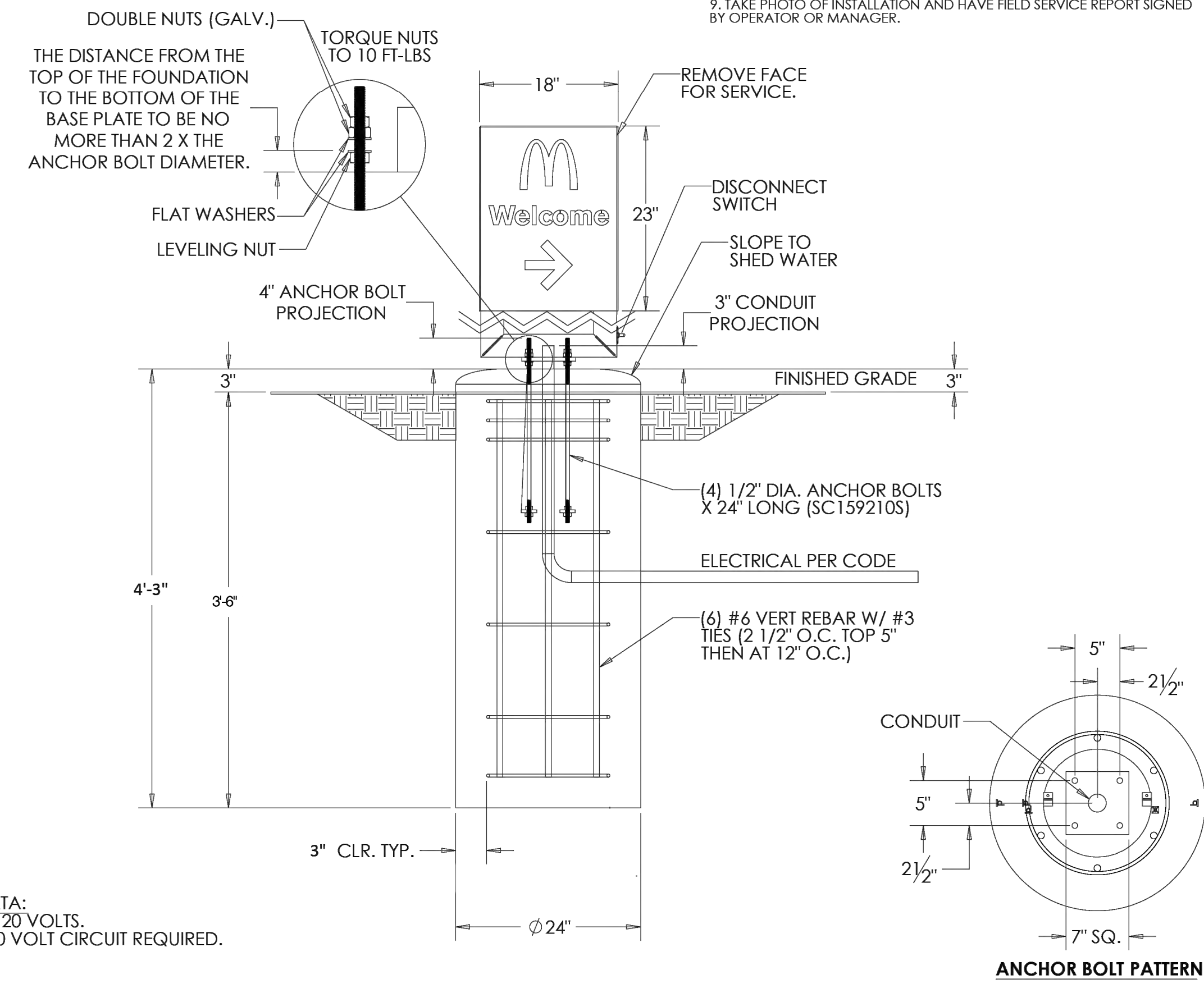
GENERAL CONTRACTOR TO FURNISH:  
 1. CONCRETE BASE.  
 2. ALL ELECTRICAL COMPONENTS REQUIRED.  
 3. PRIMARY WIRES FROM BUILDING (OR SOURCE) TO AND INCLUDING THE CONNECTION TO THE BREAKER BOX.

CONCRETE SPECIFICATIONS:  
 \* CONCRETE SHALL HAVE MIN. COMPRESSIVE STRENGTH OF 3,000 PSI @ 28 DAYS. REINFORCING STEEL SHALL HAVE MIN. YIELD STRENGTH OF 60,000 PSI. RECOMMENDED MIN. CURE TIME OF 7 DAYS BEFORE SIGN INSTALLATION.

DESIGN NOTES:  
 1. CONCRETE FOUNDATION DESIGNED USING A NET ALLOWABLE LATERAL SOIL BEARING PRESSURE OF 240 PSF/FT OF DEPTH, IF THESE SOIL CONDITIONS DO NOT EXIST AT THE FOUNDATION LOCATION, IT IS THE DIRECTOR'S RESPONSIBILITY TO NOTIFY EVERBRITE, LLC, PRIOR TO PERFORMING ADDITIONAL EXCAVATION OR ANY CONCRETE PLACEMENT.  
 2. ALL FOUNDATION EXCAVATIONS ARE TO BE FREE OF WATER AND FOREIGN MATTER BEFORE PLACING CONCRETE.  
 3. THE FOUNDATION IS DESIGNED TO WITHSTAND IBC 2015 105 MPH EXPOSURE C WIND LOADS.

THIS SIGN IS INTENDED TO BE INSTALLED IN ACCORDANCE WITH THE REQUIREMENTS OF ARTICLE 600 OF THE NATIONAL ELECTRIC CODE AND/OR OTHER APPLICABLE LOCAL CODES. THIS INCLUDES PROPER GROUNDING AND BONDING OF THE SIGN.

INSTALLATION INSTRUCTIONS:  
 1. STAKE FOUNDATION AREA AND EXCAVATE.  
 2. ALLOW CONCRETE CURE TIME AS REQUIRED.  
 3. PLACE (4) 1/2\"/>



ELECTRICAL DATA:  
 1.30 AMPS @ 120 VOLTS.  
 (1) 20 AMP 120 VOLT CIRCUIT REQUIRED.

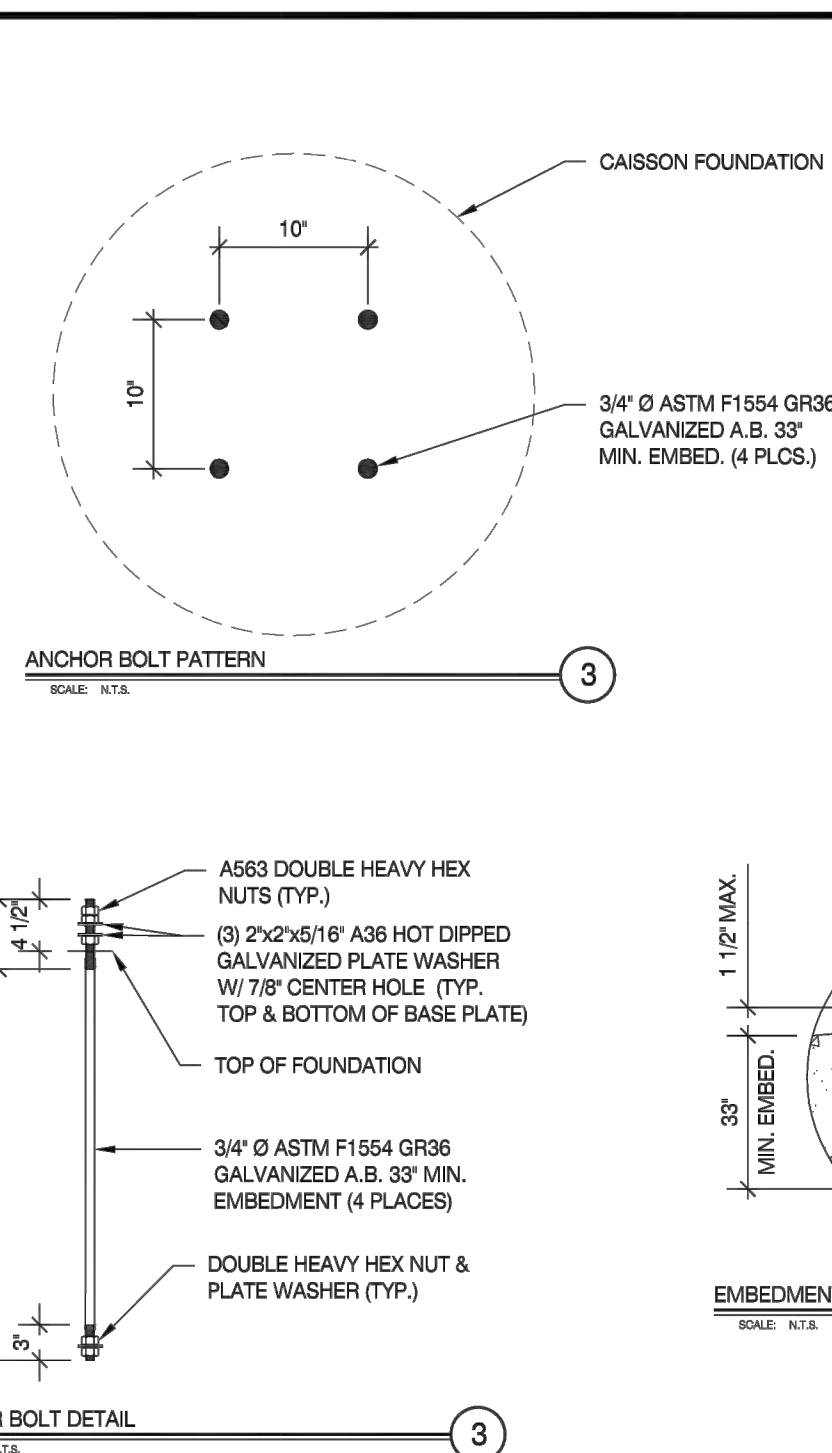
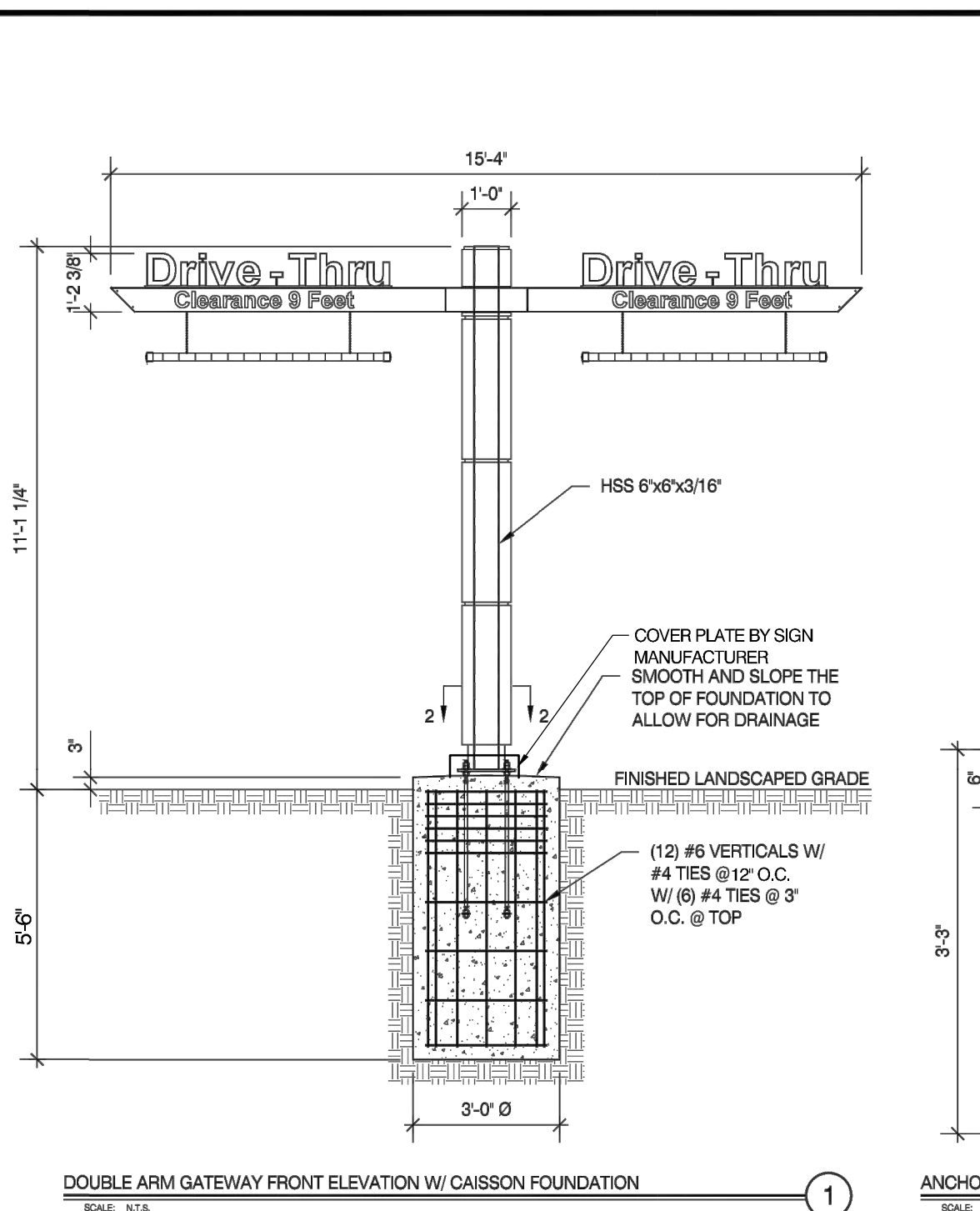
SIGN AREA:  
 BOXED: 2.875 SQ. FT.

**McDONALD'S CONSTRUCTION PLAN**  
 A TRACT OF LAND BEING LOT 4 OF 'BRYAN ROAD COMMERCIAL, PLAT 1\"/>

**Civil & Environmental Consultants, Inc.**  
 3000 Little Hills Expressway, Suite 102  
 St. Charles, MO 63301  
 314-656-4566 · 866-250-3679  
 www.ceinc.com

PATRICK T. BENNETT  
 (MO PE# 2002003134)  
 PROFESSIONAL CIVIL ENGINEER  
 \*HAND SIGNATURE ON FILE

MIL	GAS	FTB	388-966
DRAWN BY:	CHECKED BY:	APPROVED BY:	PROJECT NO:



\*2015 IBC  
 \* RISK CATEGORY I  
 \* 105 MPH WIND SPEED, EXP. C  
 \* (1) POLE, (1) FOOTING

**GENERAL NOTES:**  
 1. SEE MANUFACTURERS DRAWINGS FOR ADDITIONAL DETAIL AND DIMENSIONS.  
 2. SIGN CABINET AND CONNECTION BY PERSONA.  
 3. ANCHOR BOLTS, NUTS & WASHERS SHALL BE SHIPPED AS AN ASSEMBLY FROM SIGNLIGHTING MANUFACTURER.  
 4. DO NOT CUT ANCHOR BOLTS AFTER INSTALLATION OF THE POLE.

**DIRECTIONAL SIGN FOUNDATION DETAIL**  
 SIGNS A, B, & K

SUMMARY OF STRUCTURAL LOADS		
EQUIPMENT	SHEAR (LBS)	MOMENT (LB-FT)
DIGITAL MENU BOARD	660	3050
DIGITAL PRE-BROWSE BOARD	360	1670
CLEARANCE GATEWAY	1030	5670
ORDER HERE CANOPY	LC1 670 LC2 640	LC1 5240 LC2 7540
DIRECTIONAL SIGN	120	230
LIGHT POLE	540	3330
FLAG POLE	1140	20960

**Developer / Owner Information**  
**McDONALD'S RESTAURANT**  
 NSN 43008 (024-1305)  
 962 BRYAN ROAD  
 O'FALLON, MISSOURI

**DETAILS**

P+Z No. 24-00803  
 Approval Date 04/08/2024  
 Permit No.

Page No.  
**C802**