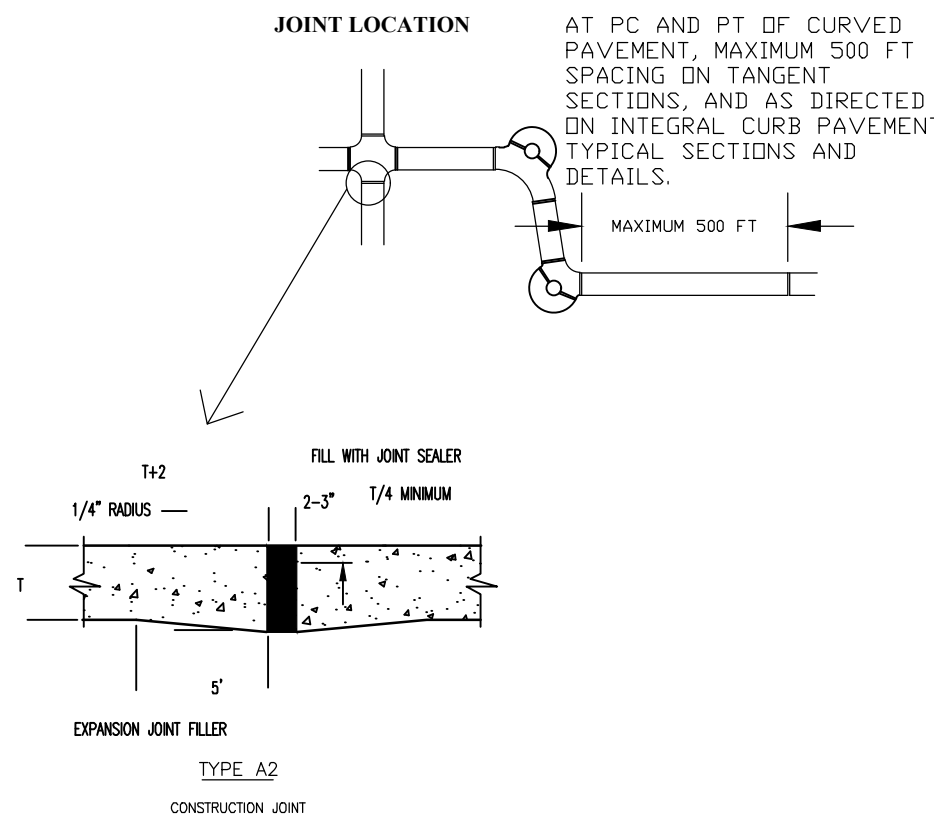


- NOTES:
- 1: All driveway entrances shall be six (6) inches P.C.C. in depth from the curb to the property line.
 - 2: All driveway approaches constructed in conjunction with sidewalk shall give the appearance that the sidewalk is continuous. That portion of the driveway approach that doubles as a sidewalk shall have a one-fourth (1/4) inch per foot cross slope the same as the abutting sidewalk.
 - 3: A two (2) inch expansion joint is required between the street and driveway approach. One (1) additional two (2) inch expansion joint is required between the garage floor and the termination of the driveway.

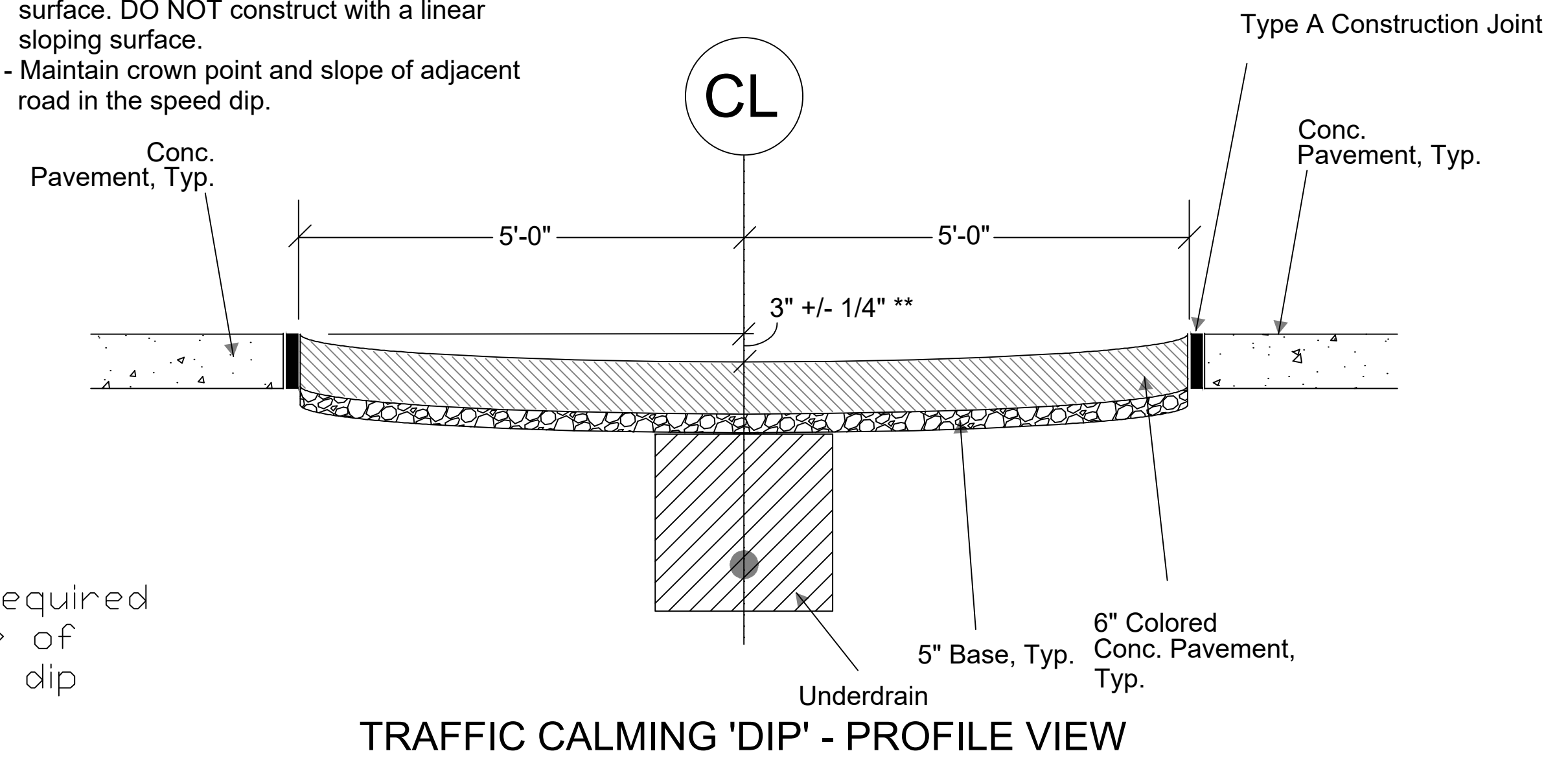
CITY OF OFALLON
ENGINEERING DEPARTMENT
OFALLON, MISSOURI
Integral Curb Detail
"B" at Driveway
SECTION NO. 405.210 (6)



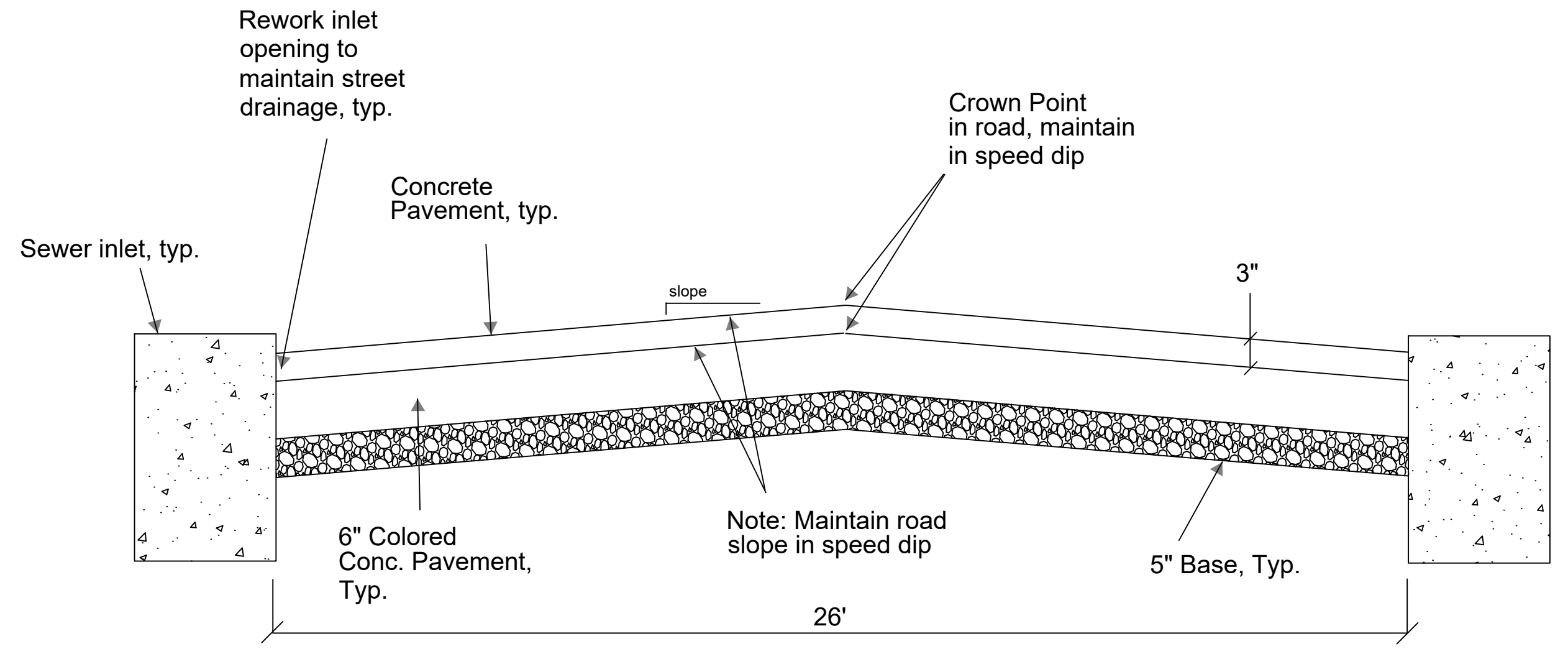
- NOTES:
- 1: JOINT FILLER COMPOSED OF CELLULAR FIBERS, ASTM D-1751, MAY BE USED AT DRIVEWAY, SIDEWALK, AND SEWER INLET AND MANHOLE LOCATIONS.
 - 2: SEE "INTEGRAL CURB DETAIL "B" AT DRIVEWAYS" FOR EXPANSION JOINT REQUIREMENTS AT DRIVEWAY CONNECTIONS TO THE STREET AND THE GARAGE.

CITY OF OFALLON
ENGINEERING DEPARTMENT
OFALLON, MISSOURI
PAVEMENT CONSTRUCTION
DETAIL

**** NOTE **** - 3" depression in concrete is a concave surface. DO NOT construct with a linear sloping surface.
- Maintain crown point and slope of adjacent road in the speed dip.

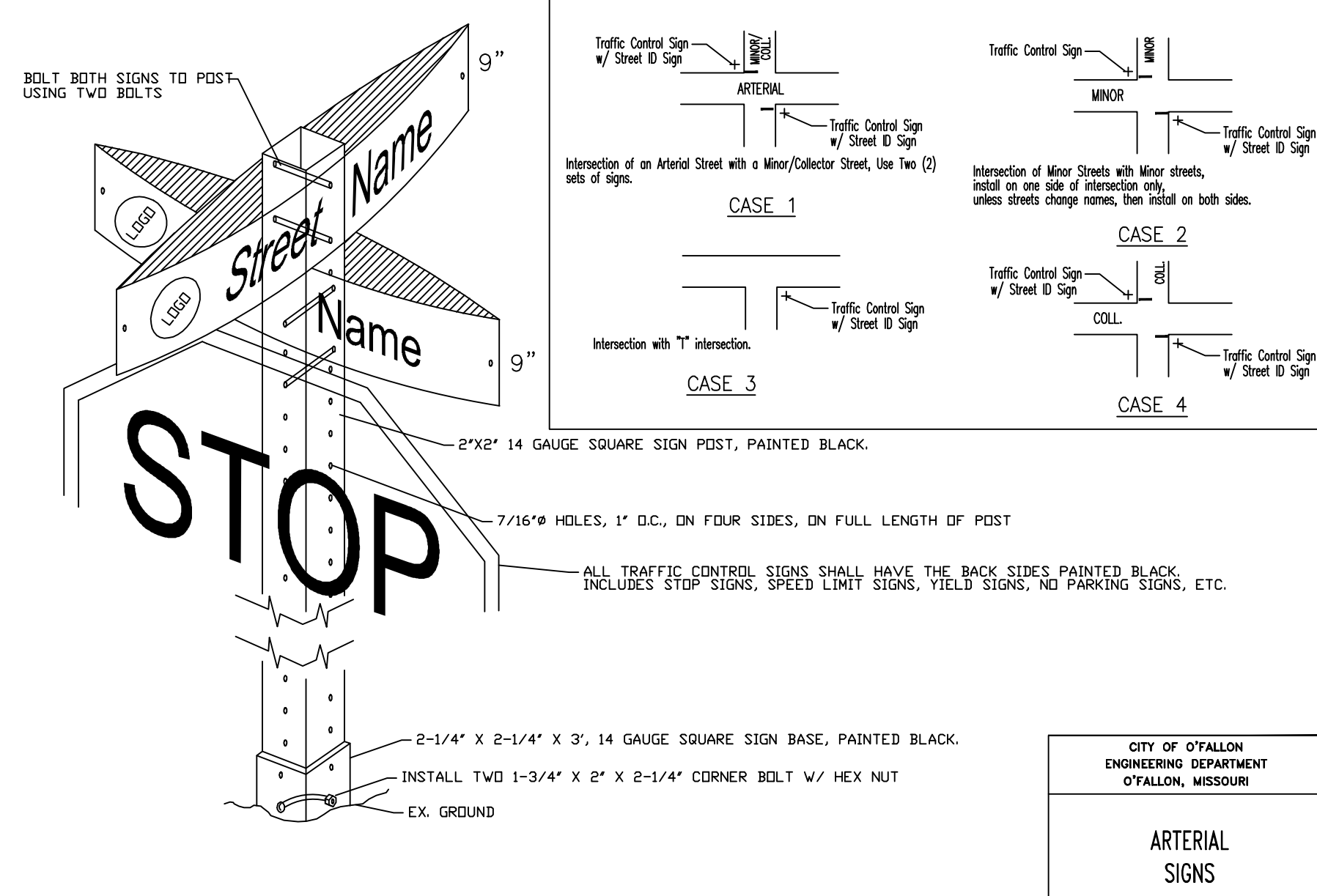


TRAFFIC CALMING 'DIP' - PROFILE VIEW

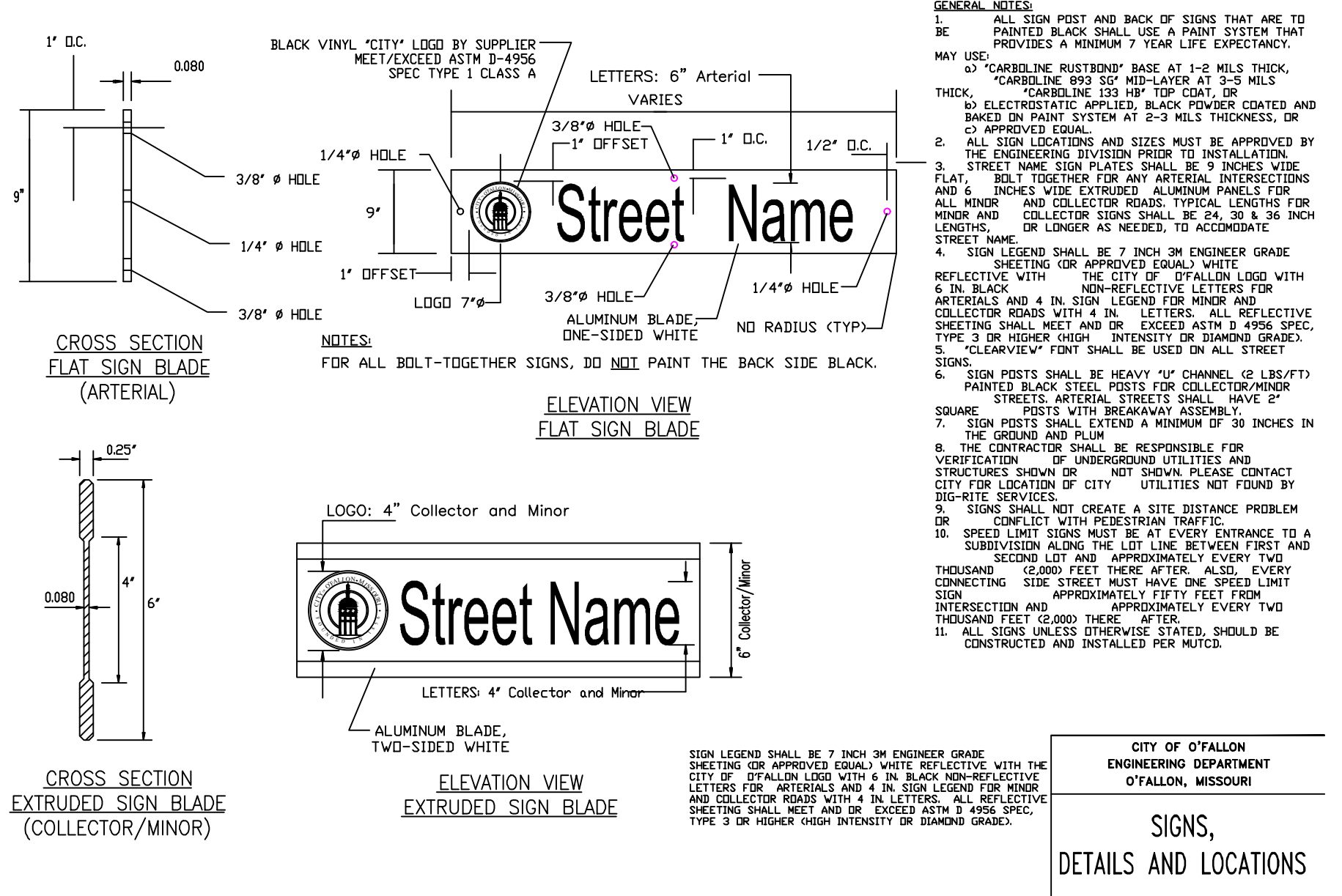


TRAFFIC CALMING 'DIP' - FRONT VIEW

'DIP' signs required on each side of the road at dip location



CITY OF OFALLON
ENGINEERING DEPARTMENT
OFALLON, MISSOURI
ARTERIAL
SIGNS



CITY OF OFALLON
ENGINEERING DEPARTMENT
OFALLON, MISSOURI
SIGNS,
DETAILS AND LOCATIONS

**McDONALD'S
CONSTRUCTION PLAN**
A TRACT OF LAND BEING LOT 4 OF 'BRYAN ROAD COMMERCIAL, PLAT 1' RECORDED AS DOCUMENT 2023R-038185 IN THE ST CHARLES COUNTY RECORDS, BEING IN THE SOUTHWEST QUARTER OF FRACTIONAL SECTION 30, TOWNSHIP 47 NORTH, RANGE 9 EAST OF THE FIFTH PRINCIPAL MERIDIAN, CITY OF OFALLON, ST. CHARLES COUNTY, MISSOURI

**Civil & Environmental
Consultants, Inc.**
3000 Little Hills Expressway, Suite 102
St. Charles, MO 63301
314-656-4566 · 866-250-3679
www.ceinc.com

PATRICK T. BENNETT
(MO PE# 2002003134)
PROFESSIONAL CIVIL ENGINEER
*HAND SIGNATURE ON FILE

MLL	GAS	FTB	388-966
DRAWN BY:	CHECKED BY:	APPROVED BY:	PROJECT NO:

Developer / Owner Information
McDONALD'S RESTAURANT
NSN 43008 (024-1305)
962 BRYAN ROAD
OFALLON, MISSOURI

P+Z No. 24-00803
Approval Date 04/08/2024
Permit No.
Page No.

C805
17 OF 26