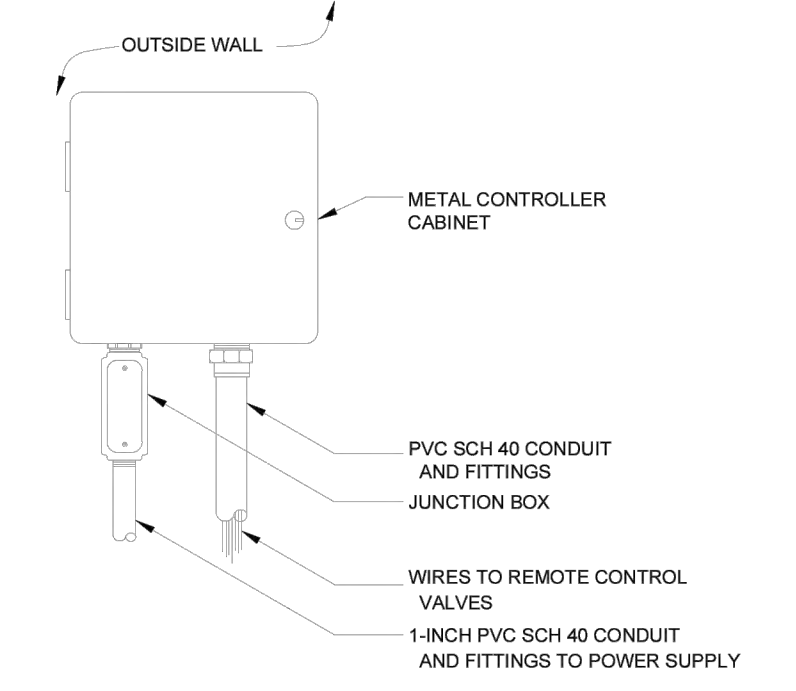
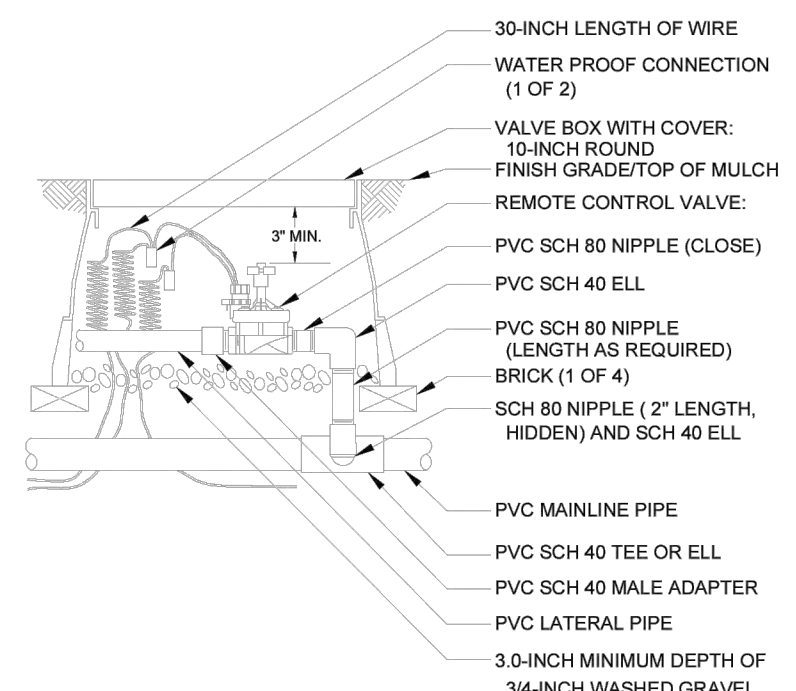


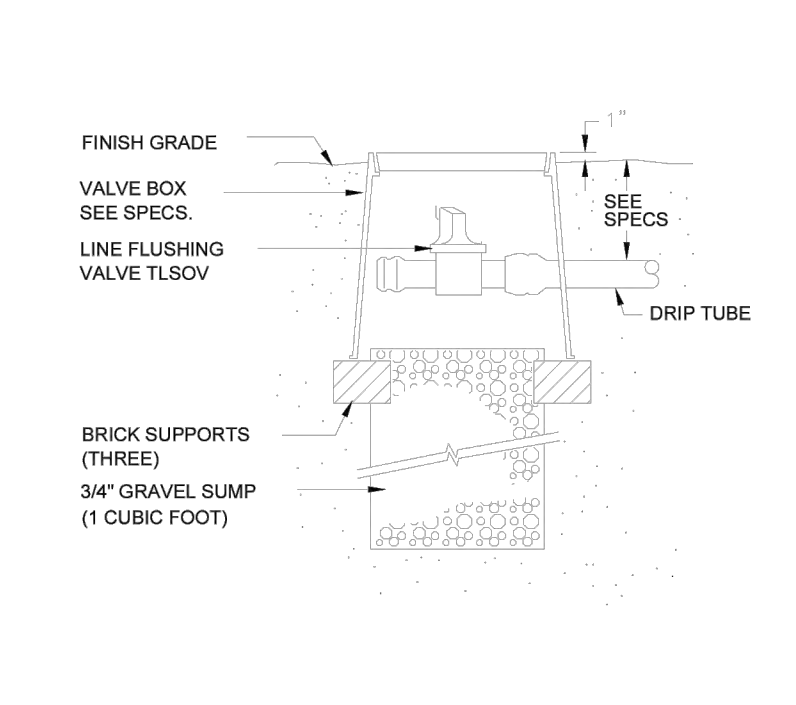
CONTROL ZONE KIT N.T.S.



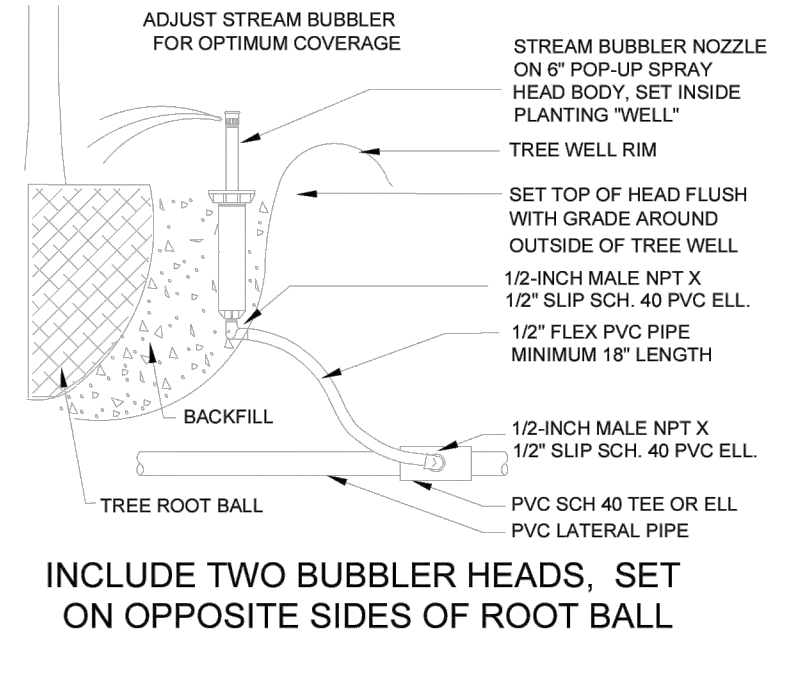
WALL MOUNT CONTROLLER N.T.S.



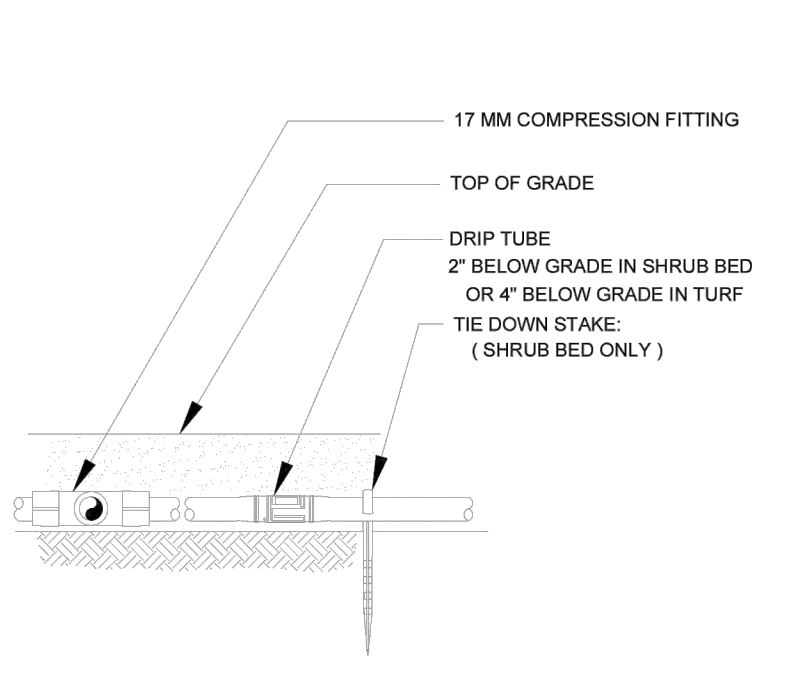
REMOTE CONTROL VALVE N.T.S.



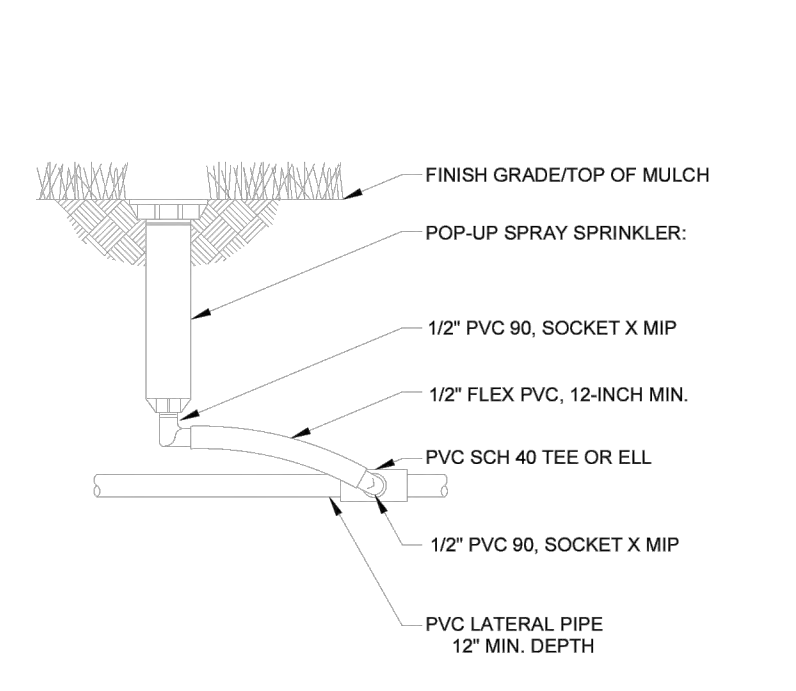
MANUAL LINE FLUSH VALVE N.T.S.



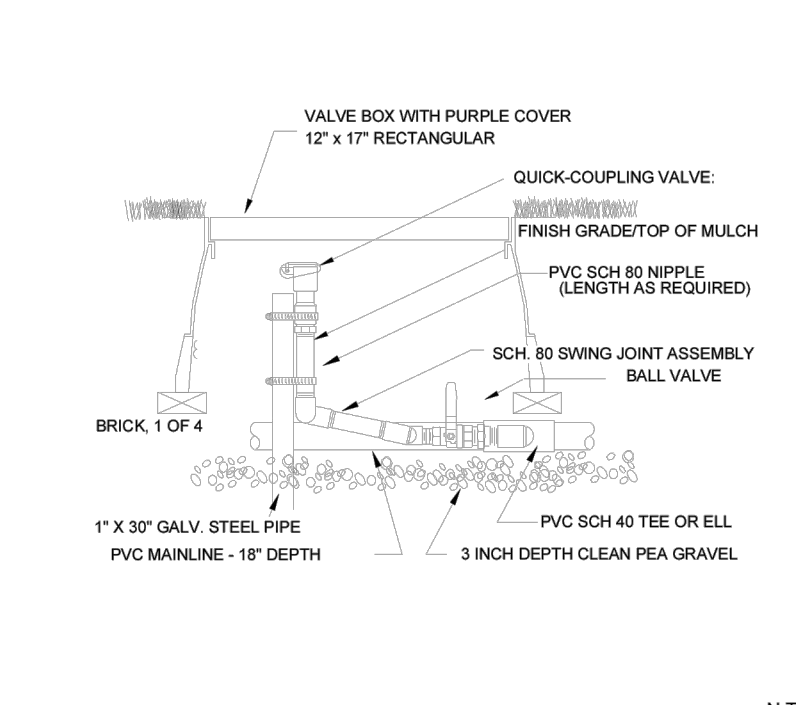
TREE BUBBLER N.T.S.



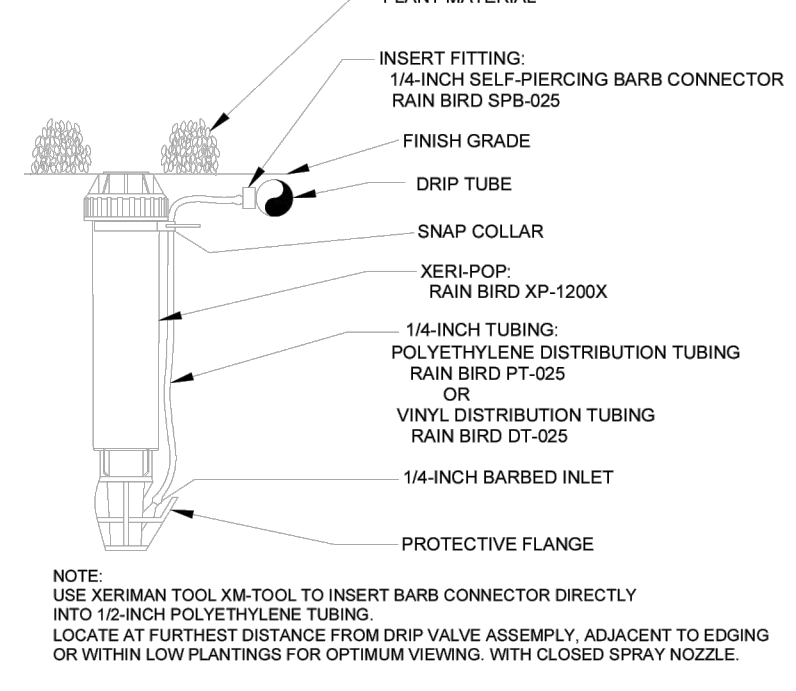
DRIP TUBE N.T.S.



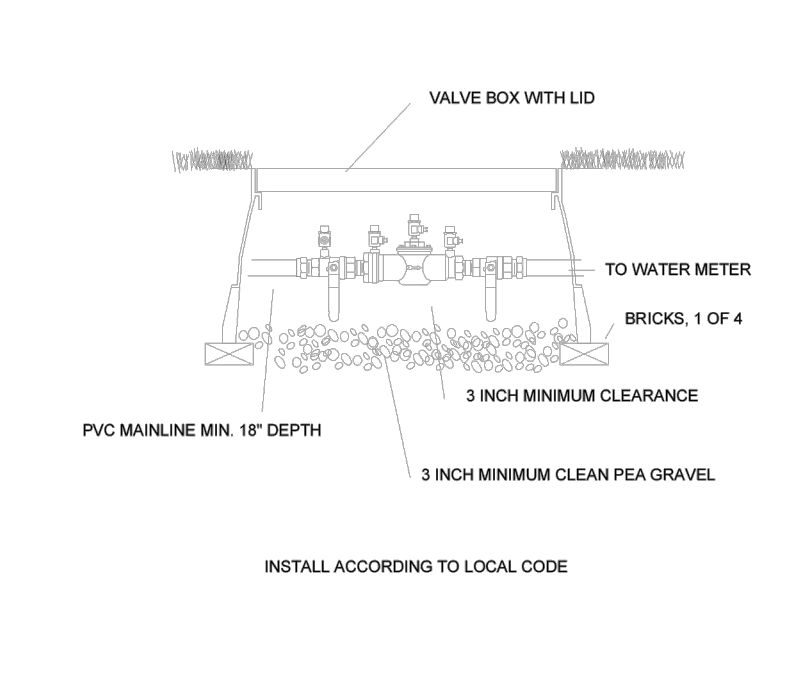
POP-UP SPRAY HEAD N.T.S.



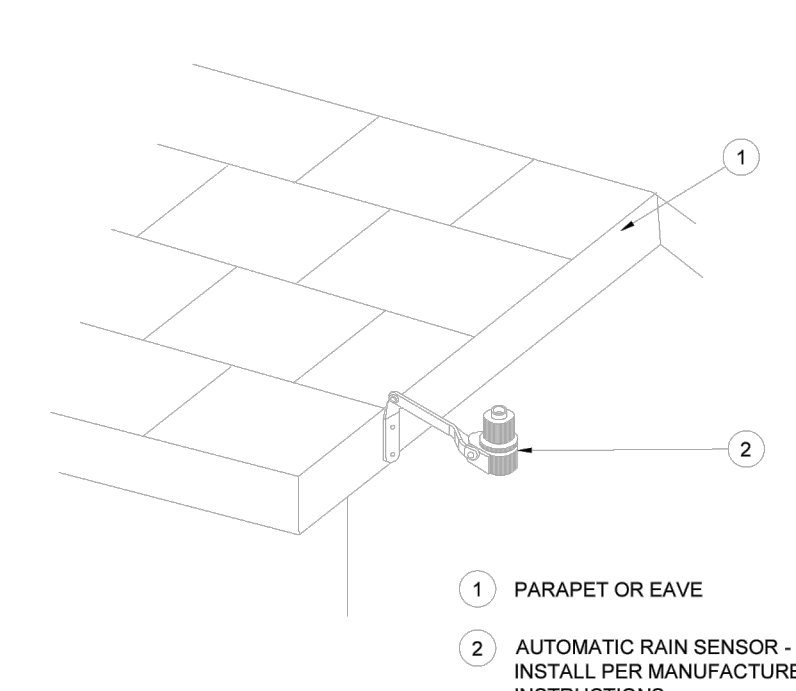
QUICK COUPLER VALVE WITH PVC BALL VALVE N.T.S.



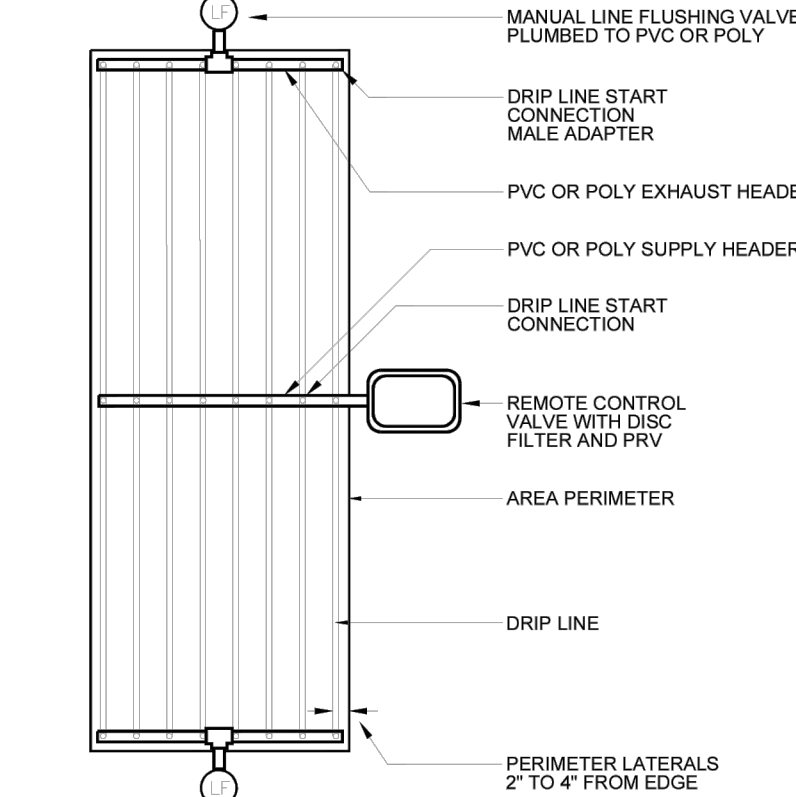
DRIP ZONE INDICATOR N.T.S.



DOUBLE CHECK BACKFLOW N.T.S.

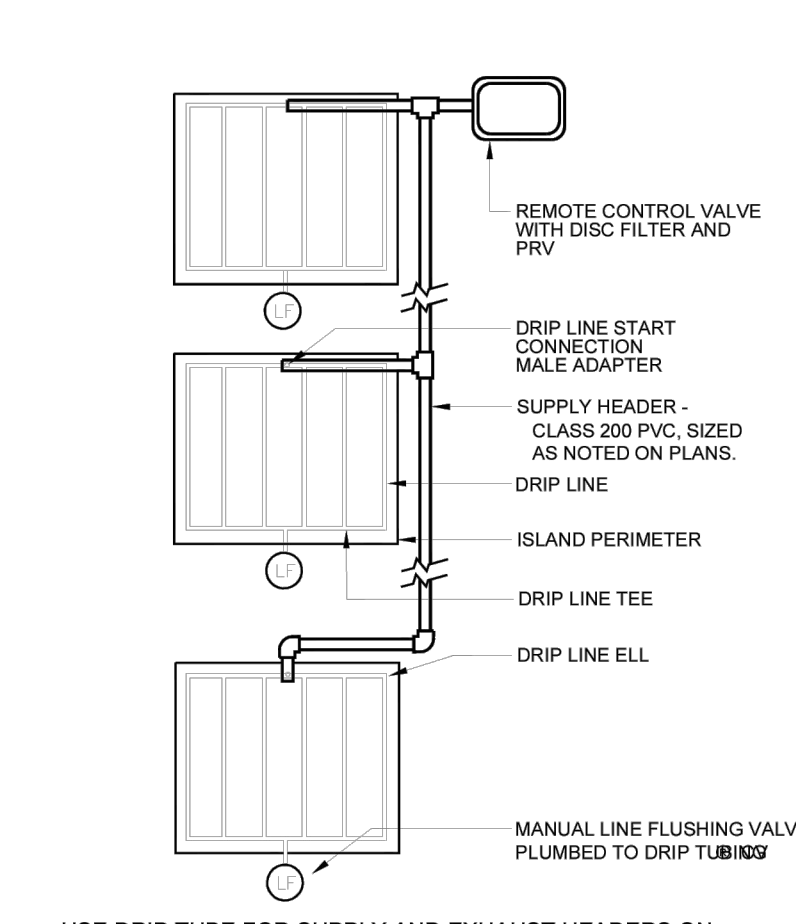


RAIN SENSOR, ROOF MOUNT N.T.S.



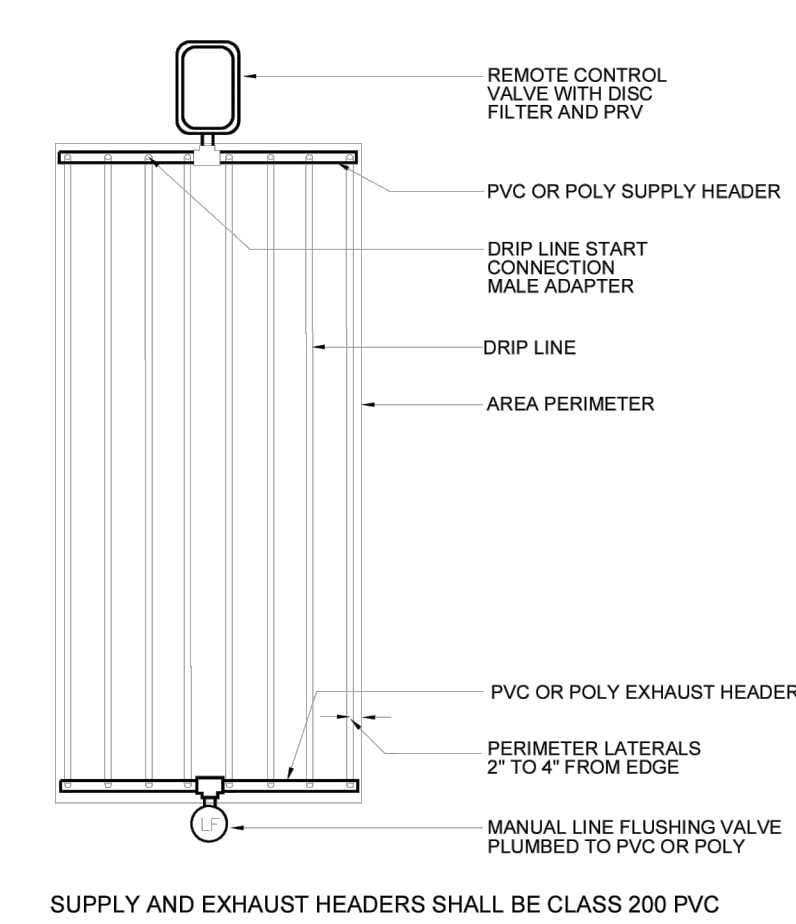
SUPPLY AND EXHAUST HEADERS SHALL BE CLASS 200 PVC PIPE, OF THE SAME DIAMETER AS THE ZONE VALVE SIZE.
USE DRIP TUBE FOR SUPPLY AND EXHAUST HEADERS ON GRIDS WITH FLOW SMALLER THAN 5 GPM ONLY.

DRIP CENTER FEED LAYOUT N.T.S.



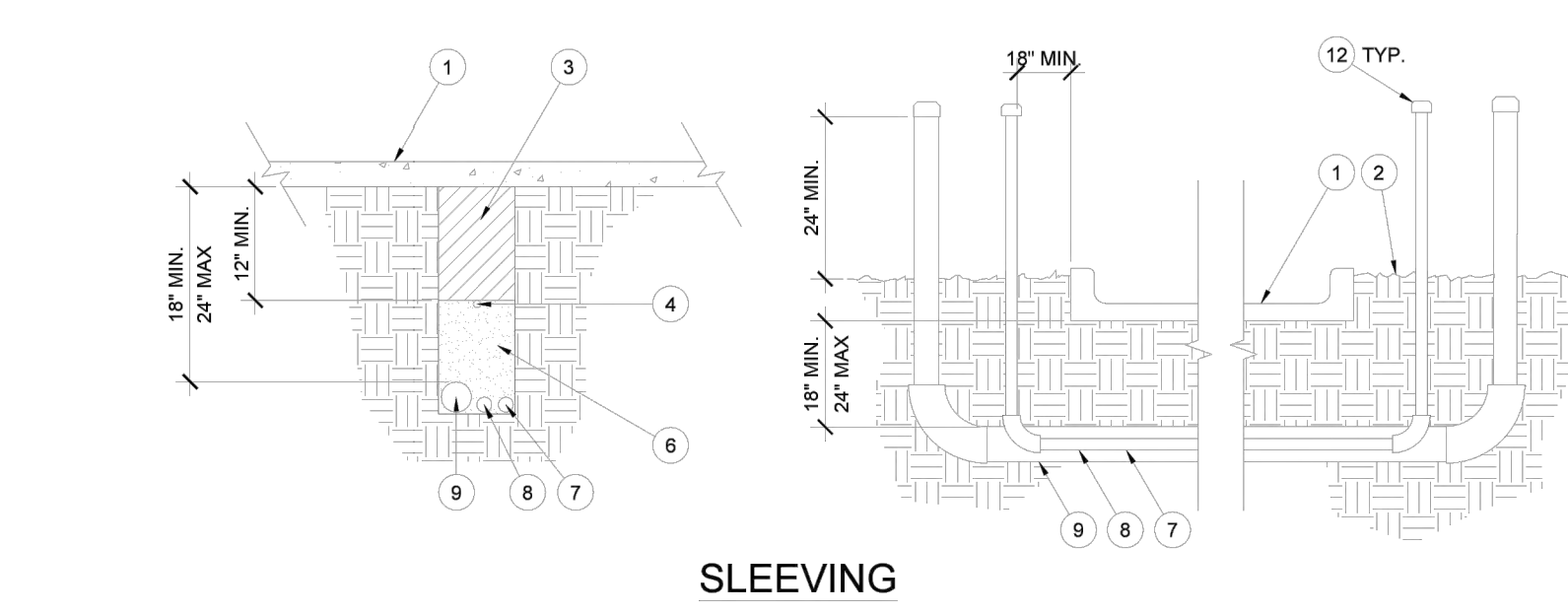
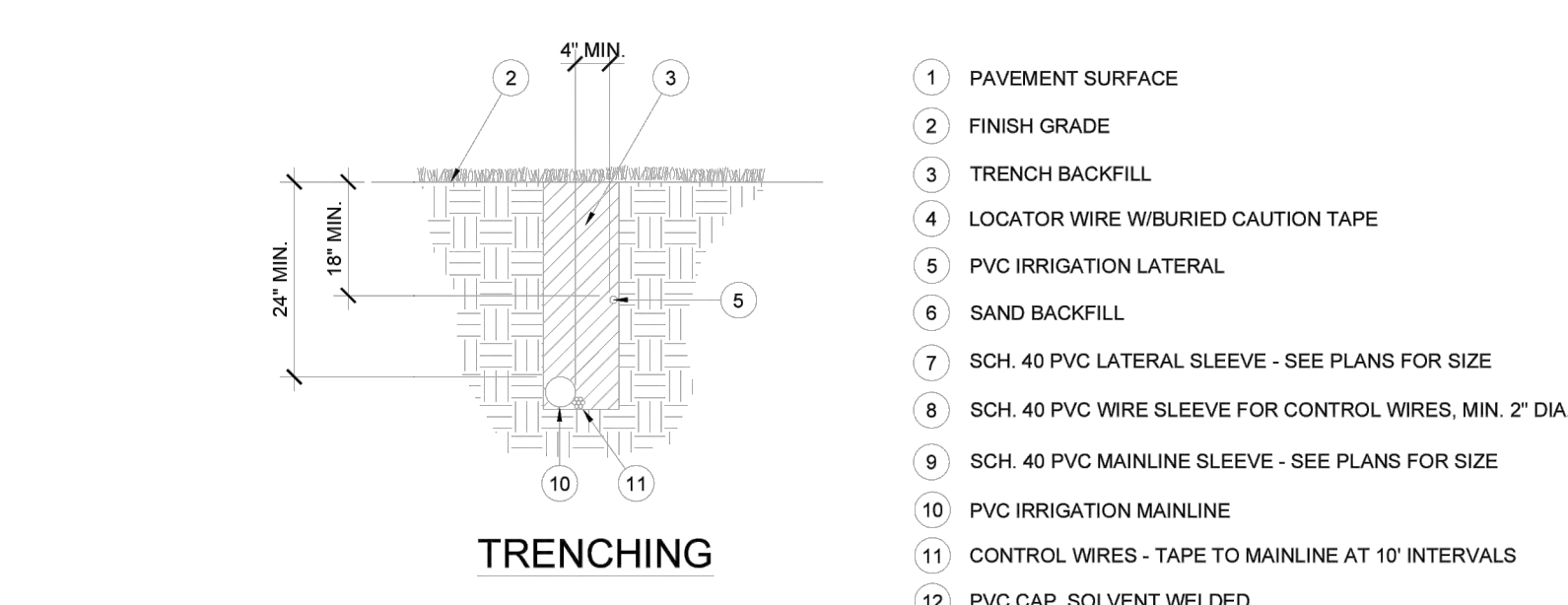
USE DRIP TUBE FOR SUPPLY AND EXHAUST HEADERS ON GRIDS WITH FLOW SMALLER THAN 5 GPM ONLY.

DRIP ISLAND LAYOUT N.T.S.

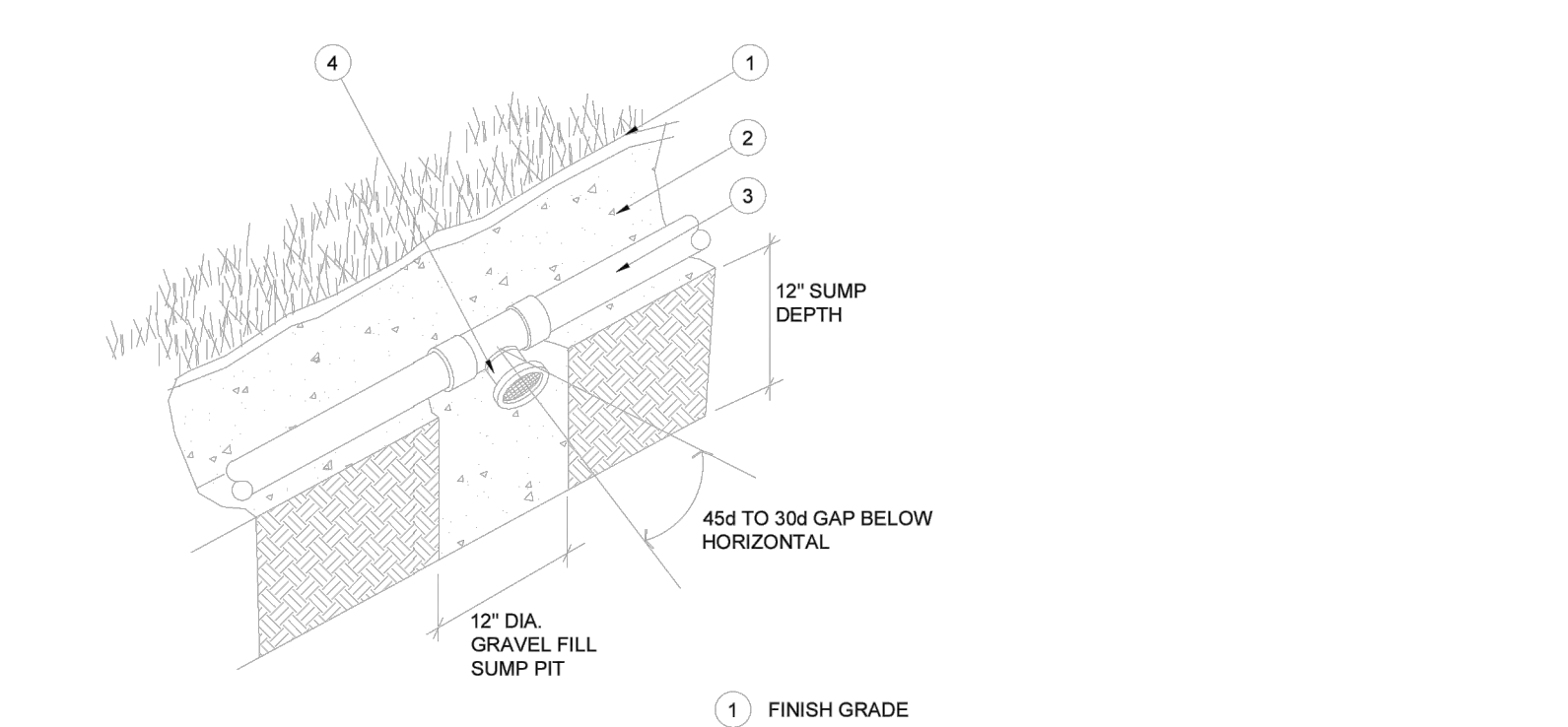


SUPPLY AND EXHAUST HEADERS SHALL BE CLASS 200 PVC PIPE, OF THE SAME DIAMETER AS THE ZONE VALVE SIZE.
USE DRIP TUBE FOR SUPPLY AND EXHAUST HEADERS ON GRIDS WITH FLOW SMALLER THAN 5 GPM ONLY.

DRIP END FEED LAYOUT N.T.S.



PIPE AND SLEEVE INSTALLATION N.T.S.



NOTE:
AUTOMATIC VALVES ARE TO BE LOCATED AT LOW POINTS OF LATERAL LINES.
LOCATE END DRAIN VALVE 12" UPSTREAM FROM LAST HEAD.

AUTOMATIC DRAIN VALVE N.T.S.

NOTES:
1. REFER TO SHEET C001 FOR GENERAL NOTES AND ABBREVIATIONS.
2. CONTRACTOR SHALL REFER TO OTHER PLANS WITHIN THIS CONSTRUCTION SET FOR OTHER PERTINENT INFORMATION. IT IS NOT THE ENGINEER'S INTENT THAT ANY SINGLE PLAN SHEET IN THIS SET OF DOCUMENTS FULLY DEPICT ALL WORK ASSOCIATED WITH THIS PROJECT.

McDONALD'S CONSTRUCTION PLAN
A TRACT OF LAND BEING LOT 4 OF BRYAN ROAD COMMERCIAL, PLAT 1* RECORDED AS DOCUMENT 2023P-038185 IN THE ST CHARLES COUNTY RECORDS, BEING IN THE SOUTHWEST QUARTER OF FRACTIONAL SECTION 30, TOWNSHIP 47 NORTH, RANGE 3 EAST OF THE FIFTH PRINCIPAL MERIDIAN, CITY OF O'FALLON, ST. CHARLES COUNTY, MISSOURI

Civil & Environmental Consultants, Inc.
3000 Little Hills Expressway, Suite 102
St. Charles, MO 63301
314-656-4566 • 866-250-3679
www.cecinc.com

DRAWN BY:	MLL
CHECKED BY:	GAS
APPROVED BY:	PTB
PROJECT NO:	336-966

Developer / Owner Information
McDONALD'S RESTAURANT
NSN 43008 (024-1-1305)
962 BRYAN ROAD
O'FALLON, MISSOURI

P+Z No. 24-001803
Approval Date 04/08/2024
Permit No.

Page No.

LI-2
25 OF 26