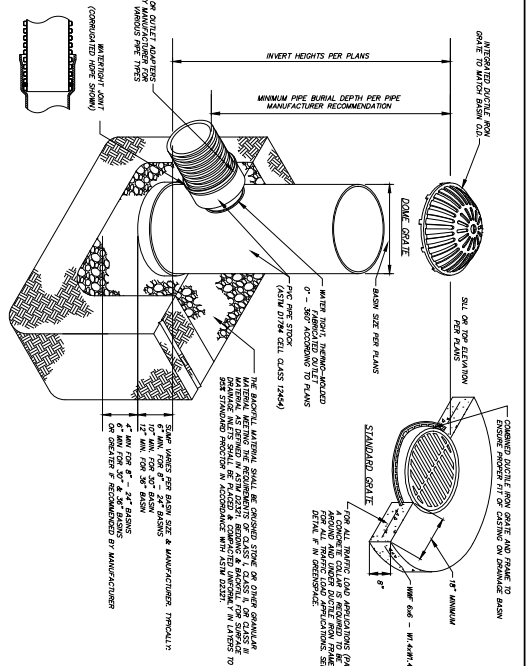


- NOTES:
 1. CONNECTIONS SHALL BE WATERPROOF.
 2. SEE PLANS FOR GRADE. THE RAIN DRAIN, PER ASTM A576 GRADE 70-50-05, OR A60-50-06.
 3. ALL MATERIALS ON THIS DRAWING SHALL BE LISTED IN THE MATERIALS SECTION UNLESS OTHERWISE NOTED.
 4. ALL MATERIALS ON THIS DRAWING SHALL BE LISTED IN THE MATERIALS SECTION UNLESS OTHERWISE NOTED.
 5. ALL MATERIALS ON THIS DRAWING SHALL BE LISTED IN THE MATERIALS SECTION UNLESS OTHERWISE NOTED.
 6. ALL MATERIALS ON THIS DRAWING SHALL BE LISTED IN THE MATERIALS SECTION UNLESS OTHERWISE NOTED.

PVC INLINE DRAIN & GRATE

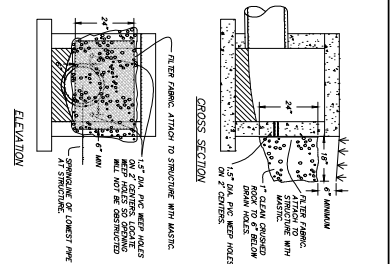
NOT TO SCALE



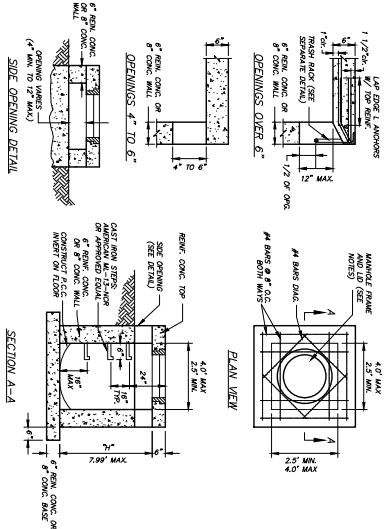
- NOTES:
 1. CONNECTIONS SHALL BE WATERPROOF.
 2. SEE PLANS FOR GRADE. THE RAIN DRAIN, PER ASTM A576 GRADE 70-50-05, OR A60-50-06.
 3. ALL MATERIALS ON THIS DRAWING SHALL BE LISTED IN THE MATERIALS SECTION UNLESS OTHERWISE NOTED.
 4. ALL MATERIALS ON THIS DRAWING SHALL BE LISTED IN THE MATERIALS SECTION UNLESS OTHERWISE NOTED.
 5. ALL MATERIALS ON THIS DRAWING SHALL BE LISTED IN THE MATERIALS SECTION UNLESS OTHERWISE NOTED.
 6. ALL MATERIALS ON THIS DRAWING SHALL BE LISTED IN THE MATERIALS SECTION UNLESS OTHERWISE NOTED.

PVC DOWN DRAIN & GRATE

NOT TO SCALE



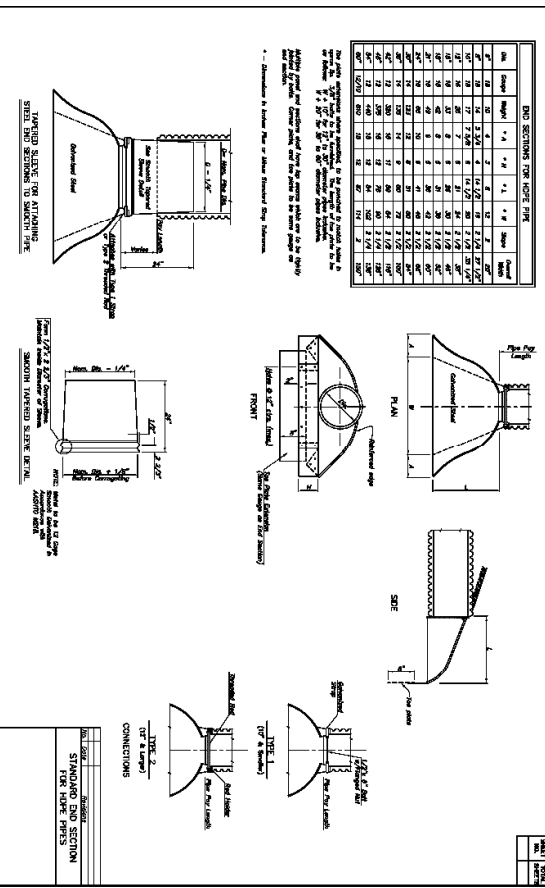
- NOTES:
 1. ALL MATERIALS SHALL BE LISTED IN THE MATERIALS SECTION UNLESS OTHERWISE NOTED.
 2. ALL MATERIALS ON THIS DRAWING SHALL BE LISTED IN THE MATERIALS SECTION UNLESS OTHERWISE NOTED.
 3. ALL MATERIALS ON THIS DRAWING SHALL BE LISTED IN THE MATERIALS SECTION UNLESS OTHERWISE NOTED.
 4. ALL MATERIALS ON THIS DRAWING SHALL BE LISTED IN THE MATERIALS SECTION UNLESS OTHERWISE NOTED.



- NOTES:
 1. CONNECTIONS SHALL BE WATERPROOF.
 2. SEE PLANS FOR GRADE. THE RAIN DRAIN, PER ASTM A576 GRADE 70-50-05, OR A60-50-06.
 3. ALL MATERIALS ON THIS DRAWING SHALL BE LISTED IN THE MATERIALS SECTION UNLESS OTHERWISE NOTED.
 4. ALL MATERIALS ON THIS DRAWING SHALL BE LISTED IN THE MATERIALS SECTION UNLESS OTHERWISE NOTED.
 5. ALL MATERIALS ON THIS DRAWING SHALL BE LISTED IN THE MATERIALS SECTION UNLESS OTHERWISE NOTED.
 6. ALL MATERIALS ON THIS DRAWING SHALL BE LISTED IN THE MATERIALS SECTION UNLESS OTHERWISE NOTED.

PVC INLINE DRAIN & GRATE

NOT TO SCALE



C11.02

Sheet

DATE: 7/14/2020
 CITY: COMMERCE
 DRAWN BY: [Name]
 CHECKED BY: [Name]
 PROJECT: MEADOWOOD ESTATES

MEADOWOOD ESTATES - PHASE I
 LOT 1 - MEADOWOOD ESTATES SUBDIVISION
 O'FALLON, ST. CHARLES COUNTY, MISSOURI

Engineering Surveys & Services
 Consulting Engineers, Land Surveyors, and Geoprotectionists
 Analytical and Technical Laboratories
 1113 Pop Street, Columbia, Missouri 65201
 573.449.7646 | www.esandc.com
 Jefferson City - Sedalia - Wildwood
 Missouri Professional Corporation # 2069190010