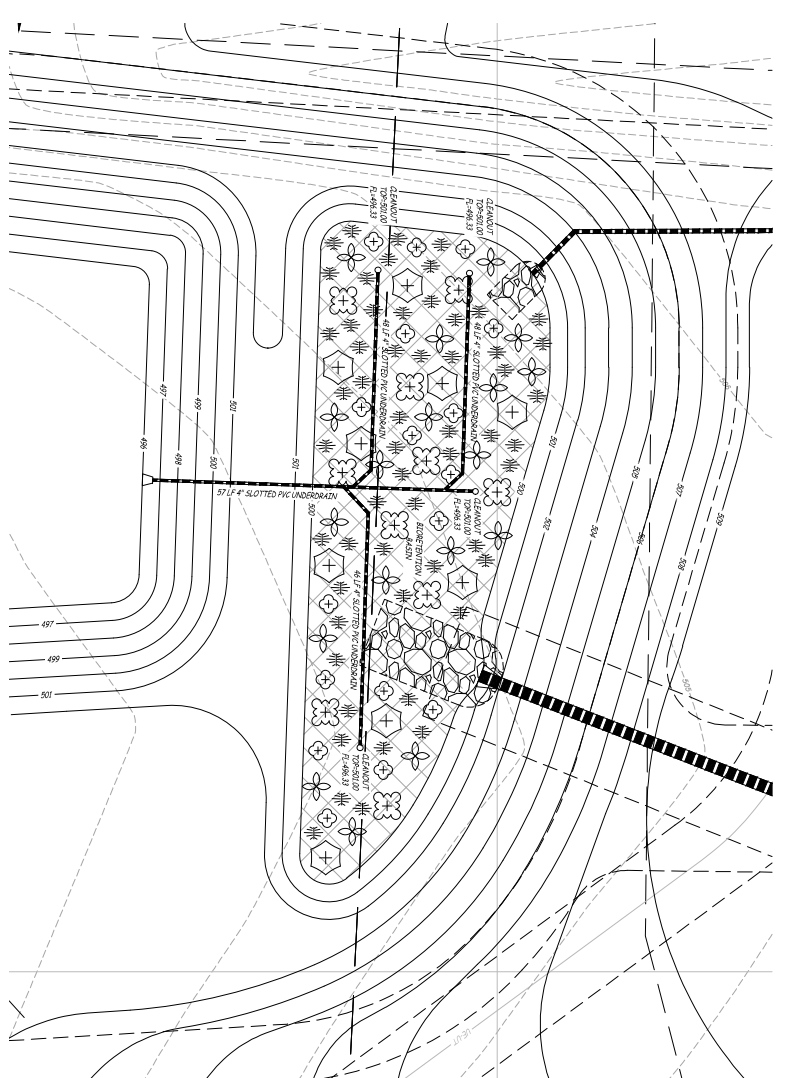


BIORETENTION FACILITY NOTES

1. THE BIORETENTION FACILITY AREA SHALL BE USED AS A TEMPORARY SEDIMENT TRAP UNTIL CONTRIBUTING DRAINAGE AREA IS STABILIZED.
2. AFTER THE DRAINAGE CONTRIBUTING DRAINAGE AREA IS STABILIZED AND VEGETATION OR CONSTRUCTIVE IMPERVIOUS SURFACES ARE INSTALLED, ALL SEDIMENT AND DEBRIS SHALL BE REMOVED FROM THE BIORETENTION FACILITY.
3. THE BIORETENTION FACILITY SHALL BE MAINTAINED AND MONITORED AS FOLLOWS:
 - a. ALL SAND AND GRAVEL TO BE MAINTAINED AND MONITORED.
 - b. THE PLANTING MEDIA SHALL BE MAINTAINED AND MONITORED.
4. THE PLANTING MEDIA SHALL BE MAINTAINED AND MONITORED AS FOLLOWS:
 - a. THE PLANTING MEDIA SHALL BE MAINTAINED AND MONITORED.
 - b. THE PLANTING MEDIA SHALL BE MAINTAINED AND MONITORED.
5. THE PLANTING MEDIA SHALL BE MAINTAINED AND MONITORED AS FOLLOWS:
 - a. THE PLANTING MEDIA SHALL BE MAINTAINED AND MONITORED.
 - b. THE PLANTING MEDIA SHALL BE MAINTAINED AND MONITORED.
6. PLANTING MEDIA SHALL BE MAINTAINED AND MONITORED AS FOLLOWS:
 - a. THE PLANTING MEDIA SHALL BE MAINTAINED AND MONITORED.
 - b. THE PLANTING MEDIA SHALL BE MAINTAINED AND MONITORED.
7. THE PLANTING MEDIA SHALL BE MAINTAINED AND MONITORED AS FOLLOWS:
 - a. THE PLANTING MEDIA SHALL BE MAINTAINED AND MONITORED.
 - b. THE PLANTING MEDIA SHALL BE MAINTAINED AND MONITORED.
8. THE PLANTING MEDIA SHALL BE MAINTAINED AND MONITORED AS FOLLOWS:
 - a. THE PLANTING MEDIA SHALL BE MAINTAINED AND MONITORED.
 - b. THE PLANTING MEDIA SHALL BE MAINTAINED AND MONITORED.
9. THE PLANTING MEDIA SHALL BE MAINTAINED AND MONITORED AS FOLLOWS:
 - a. THE PLANTING MEDIA SHALL BE MAINTAINED AND MONITORED.
 - b. THE PLANTING MEDIA SHALL BE MAINTAINED AND MONITORED.
10. THE PLANTING MEDIA SHALL BE MAINTAINED AND MONITORED AS FOLLOWS:
 - a. THE PLANTING MEDIA SHALL BE MAINTAINED AND MONITORED.
 - b. THE PLANTING MEDIA SHALL BE MAINTAINED AND MONITORED.
11. THE PLANTING MEDIA SHALL BE MAINTAINED AND MONITORED AS FOLLOWS:
 - a. THE PLANTING MEDIA SHALL BE MAINTAINED AND MONITORED.
 - b. THE PLANTING MEDIA SHALL BE MAINTAINED AND MONITORED.
12. THE PLANTING MEDIA SHALL BE MAINTAINED AND MONITORED AS FOLLOWS:
 - a. THE PLANTING MEDIA SHALL BE MAINTAINED AND MONITORED.
 - b. THE PLANTING MEDIA SHALL BE MAINTAINED AND MONITORED.
13. THE PLANTING MEDIA SHALL BE MAINTAINED AND MONITORED AS FOLLOWS:
 - a. THE PLANTING MEDIA SHALL BE MAINTAINED AND MONITORED.
 - b. THE PLANTING MEDIA SHALL BE MAINTAINED AND MONITORED.



BIORETENTION PLAN VIEW
SCALE: 1" = 10'

COMMON NAME	PLANT SYMBOL	SCIENTIFIC NAME
SWAMP MILFORD	(Symbol)	ASplenium nidivivum
SWAMP MILFORD	(Symbol)	Asplenium nidivivum
SWAMP MILFORD	(Symbol)	Asplenium nidivivum
SWAMP MILFORD	(Symbol)	Asplenium nidivivum
SWAMP MILFORD	(Symbol)	Asplenium nidivivum
SWAMP MILFORD	(Symbol)	Asplenium nidivivum



PLANNING & ZONING DEPARTMENT APPROVED MAY 7, 2020

MEADOWOOD ESTATES - PHASE I
LOT 1 - MEADOWOOD ESTATES SUBDIVISION
O'FALLON, ST. CHARLES COUNTY, MISSOURI

Professional Engineer Seal: MARY ANN HART, PROFESSIONAL ENGINEER, MISSOURI, No. 14480, EXPIRES 8/14/2020.

City Comments: AUGUST 17, 2020

Sheet: **C4.03**

Project: BIORETENTION PLAN

Engineering Surveys & Services
Consulting Engineers, Land Surveyors, and Geoprosessionals
Analytical and Material Laboratories

1113 Pop Street, Columbia, Missouri 65201
571-449-2646 | www.esandse.com

Other Offices:
Jefferson City • Sedalia • Wildwood
Missouri Engineering Corporation # 2004060018