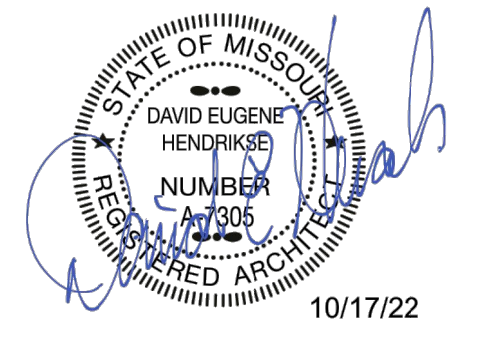


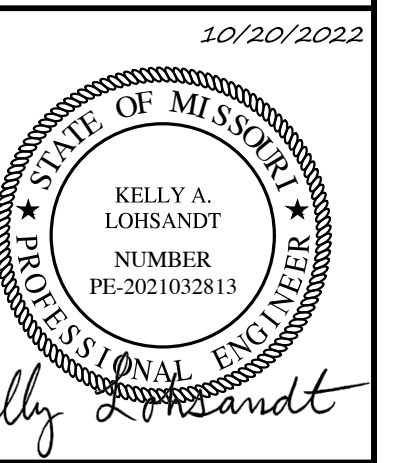
PRINTS ISSUED
07/27/22 - PERMIT SUBMITTAL
REVISIONS:
1 10/14/22 ADD #1 - Response to City Comments

rosemann & ASSOCIATES P.C.
ARCHITECTURE
INTERIOR DESIGN
ENGINEERING
PLANNING
1526 Grand Boulevard
Kansas City, MO 64108-1404
p: 816.472.1448
w: www.rosemann.com
© 2022 Rosemann & Associates, P.C.
DENVER ■ KANSAS CITY ■ ST. LOUIS ■ ATLANTA



MEADOWOOD ESTATES II, LP
MEADOWOOD ESTATES - PHASE II
LOT 4 - MEADOWOOD ESTATES SUBDIVISION
O'FALLON, ST. CHARLES COUNTY, MISSOURI

Meadowood Estates II
Lot 4 - Meadowood Estates Subdivision



KELLY A. LOSTRANDT
PROFESSIONAL ENGINEER
PE-2021032813

IF ORIGINAL SIGNATURE OR DIGITAL AUTHENTICATION IS NOT PRESENT THIS MEDIA SHOULD NOT BE CONSIDERED A CERTIFIED DOCUMENT.

Date
OCTOBER 20, 2022

Revised

SHEET TITLE
ARCHITECTURAL SITE AMENITIES

PROJECT NUMBER: 22032

SHEET NUMBER:

AS-101

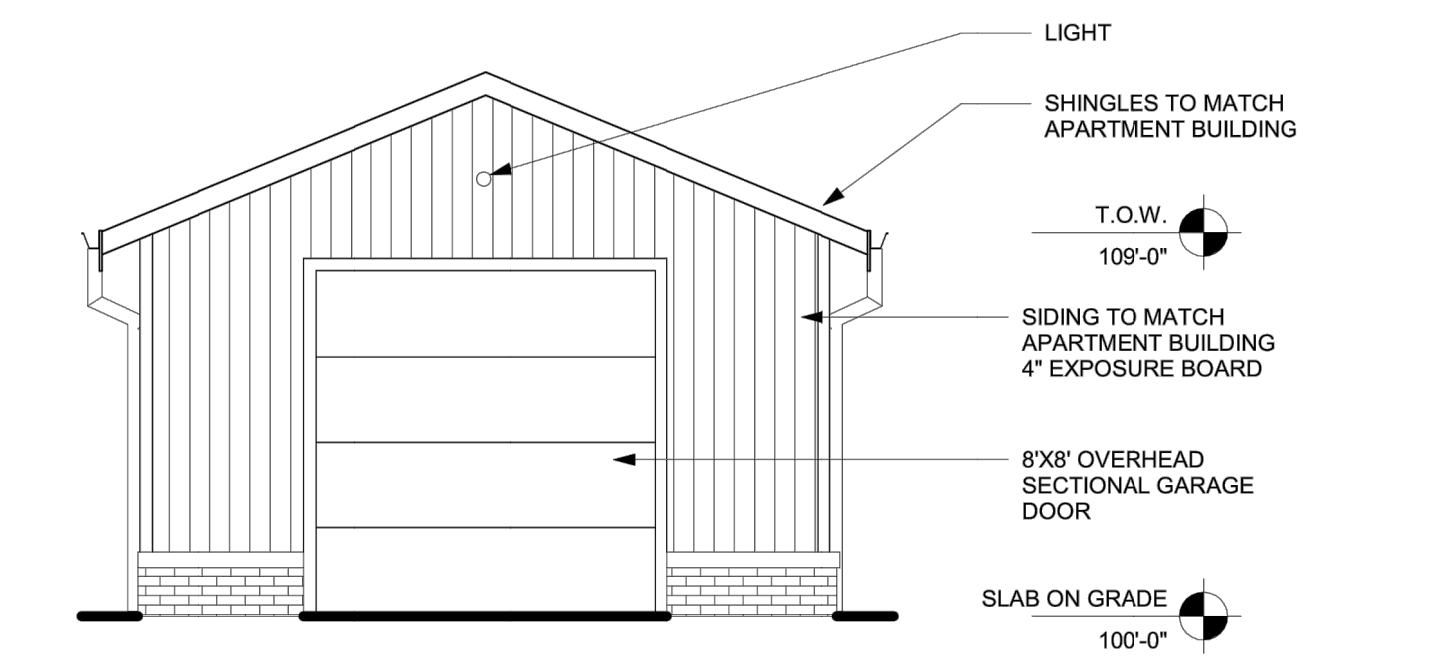
Design: KAL Drawn: CGH

SITE DETAILS

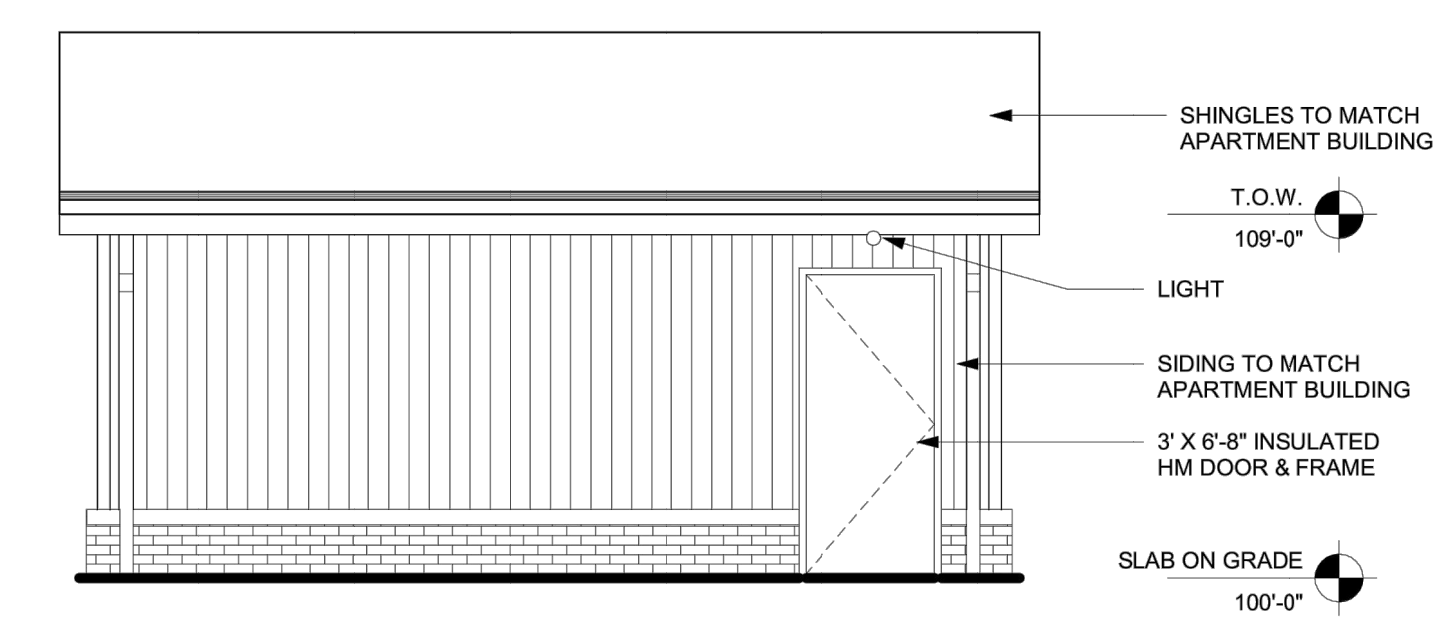
Sheet

C10.05

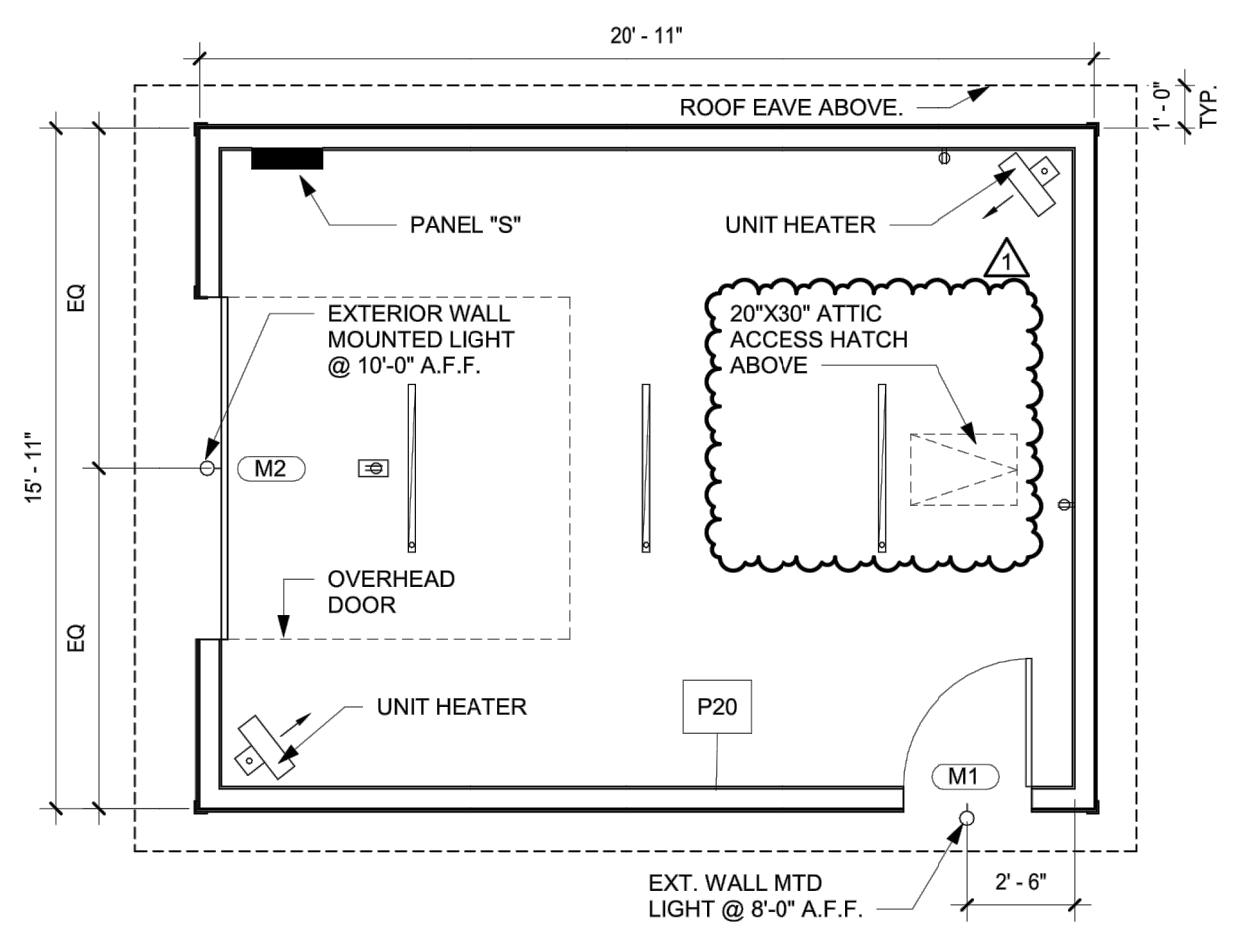
ES&S PROJECT NO. 15511



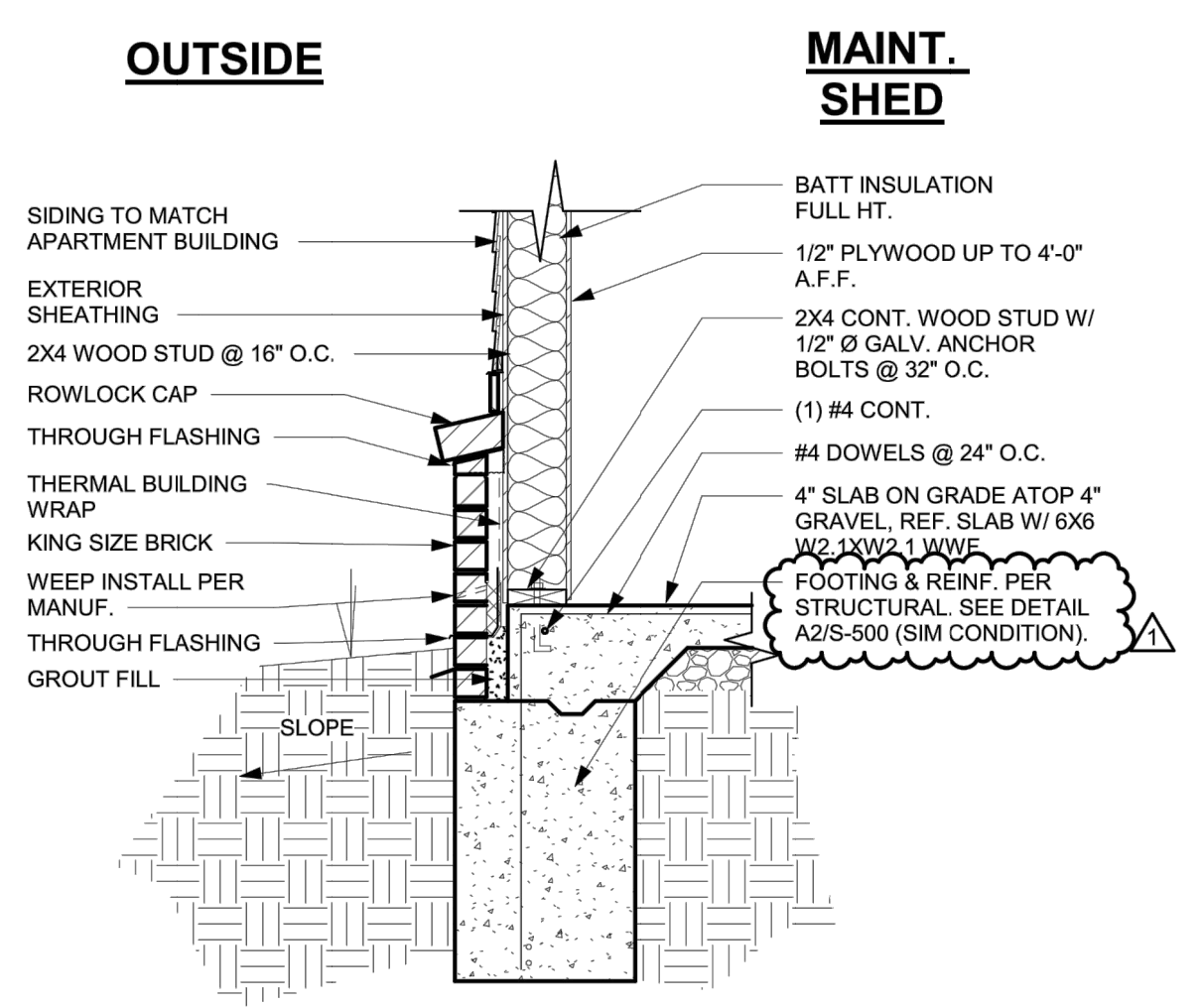
D1 MAINTENANCE SHED FRONT ELEVATION
1/4" = 1'-0"



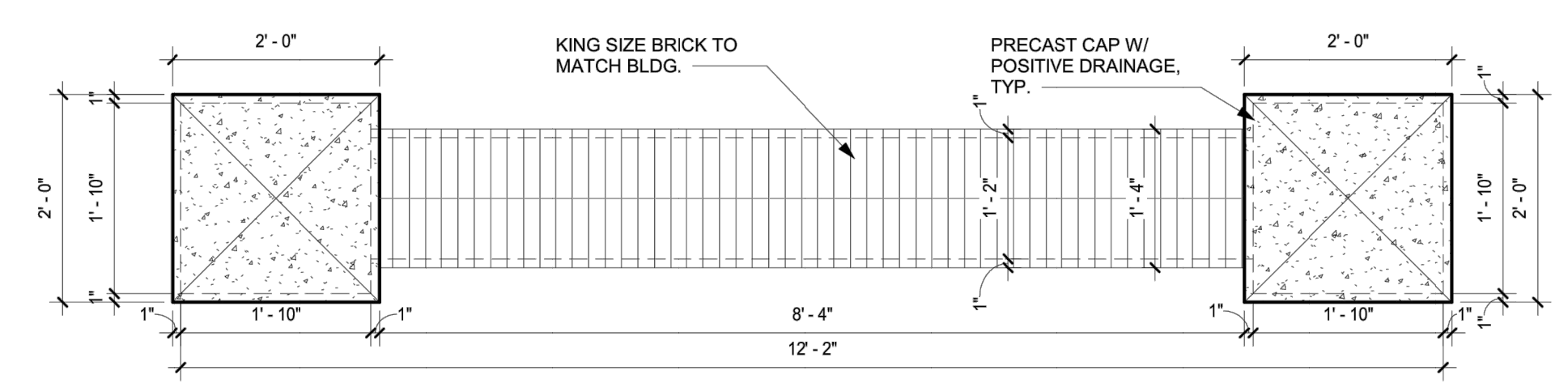
C1 MAINTENANCE SHED SIDE ELEVATION
1/4" = 1'-0"



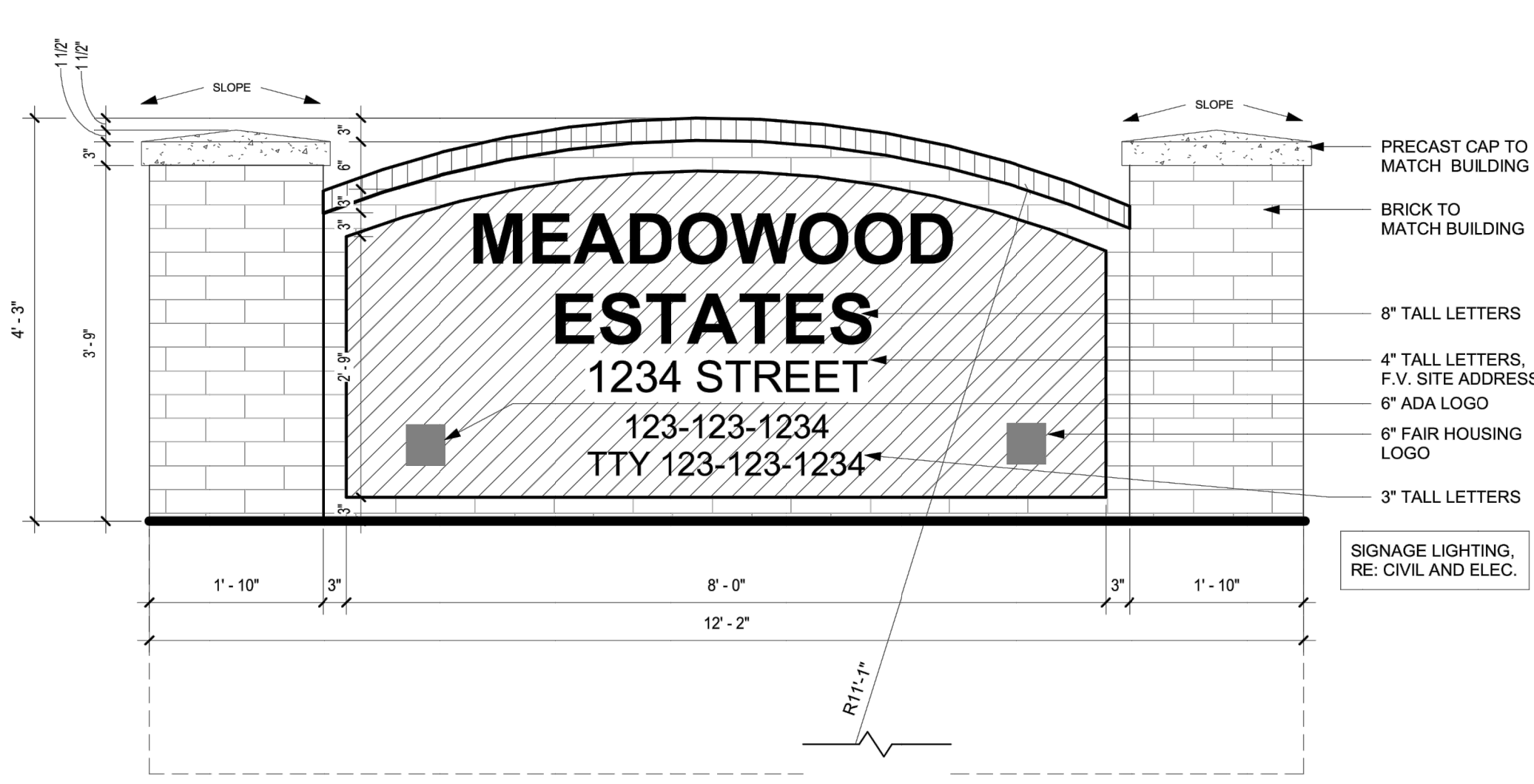
D3 MAINTENANCE SHED FLOOR PLAN
1/4" = 1'-0"



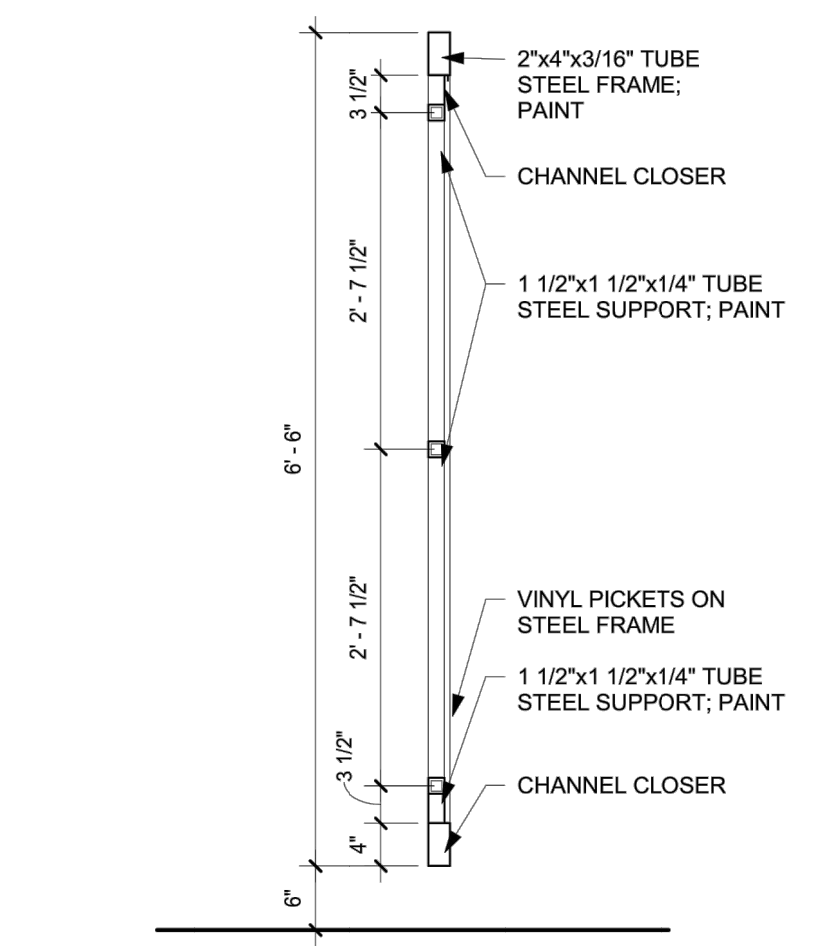
B3 MAINTENANCE SHED SECTION
3/4" = 1'-0"



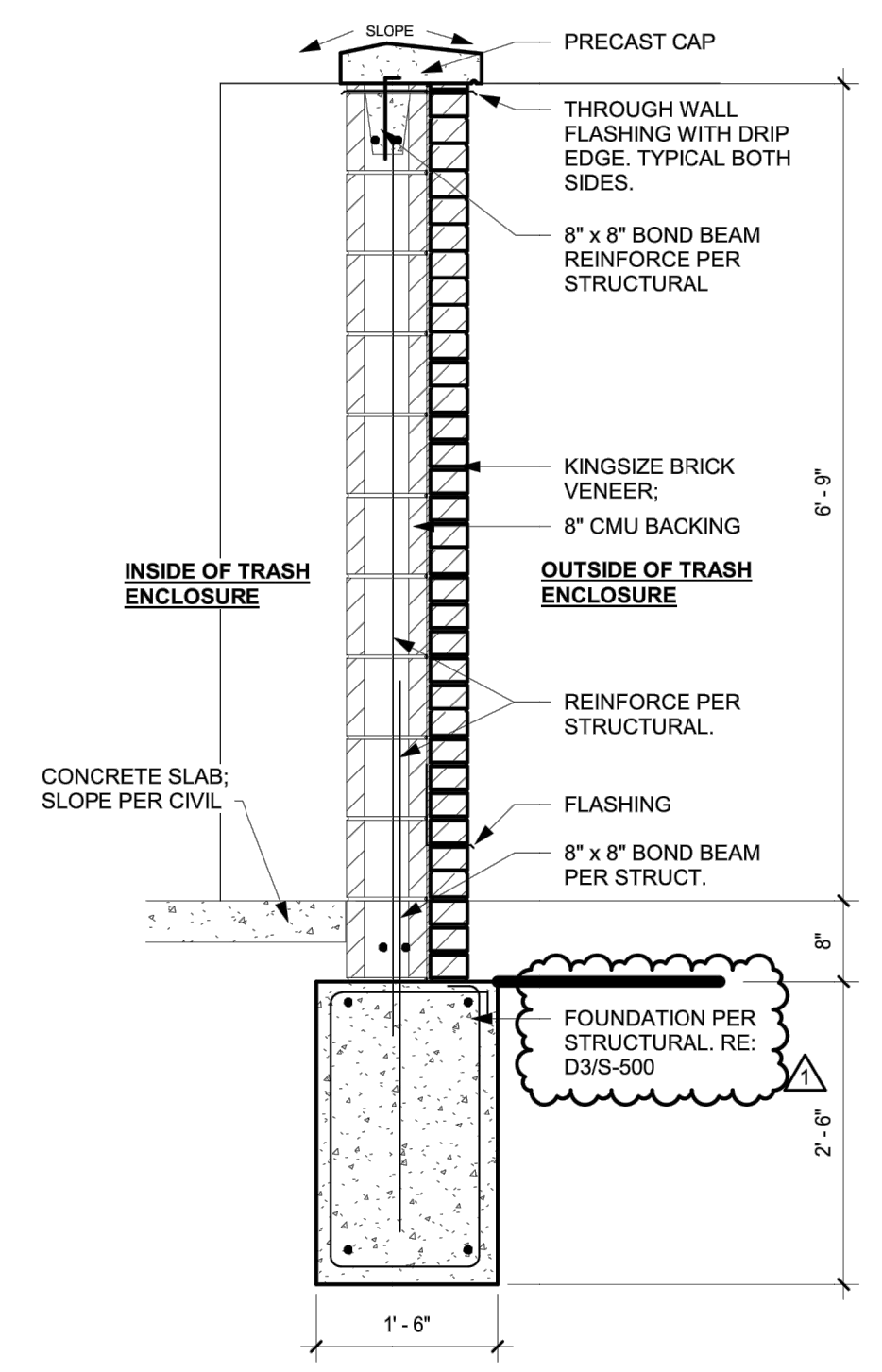
B1 MONUMENT SIGN PLAN
3/4" = 1'-0"



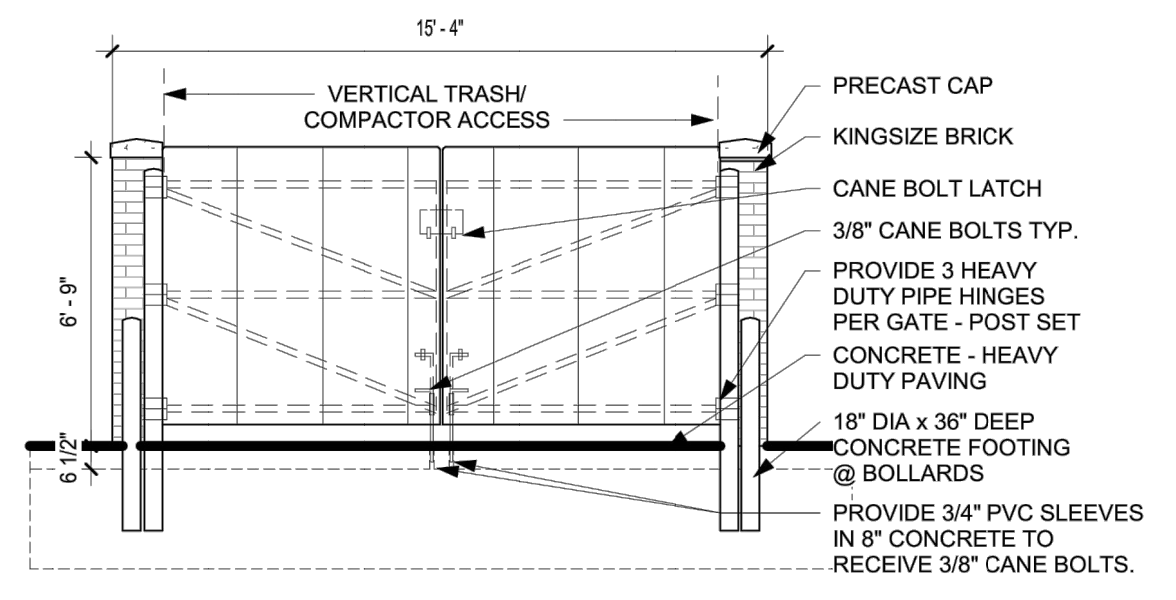
A1 MONUMENT SIGN FRONT ELEVATION
3/4" = 1'-0"



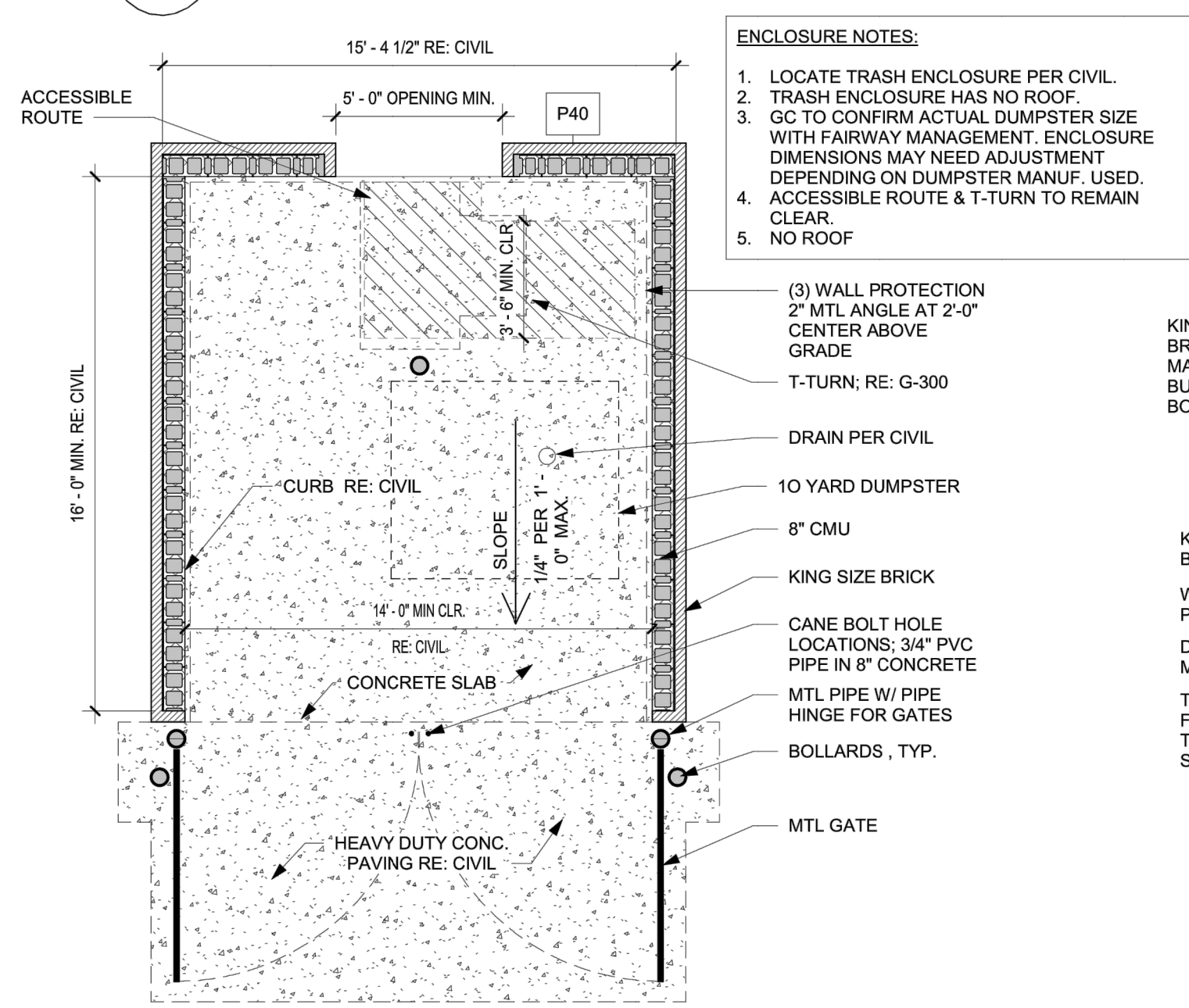
D4 TRASH ENCLOSURE GATE SECTION
3/4" = 1'-0"



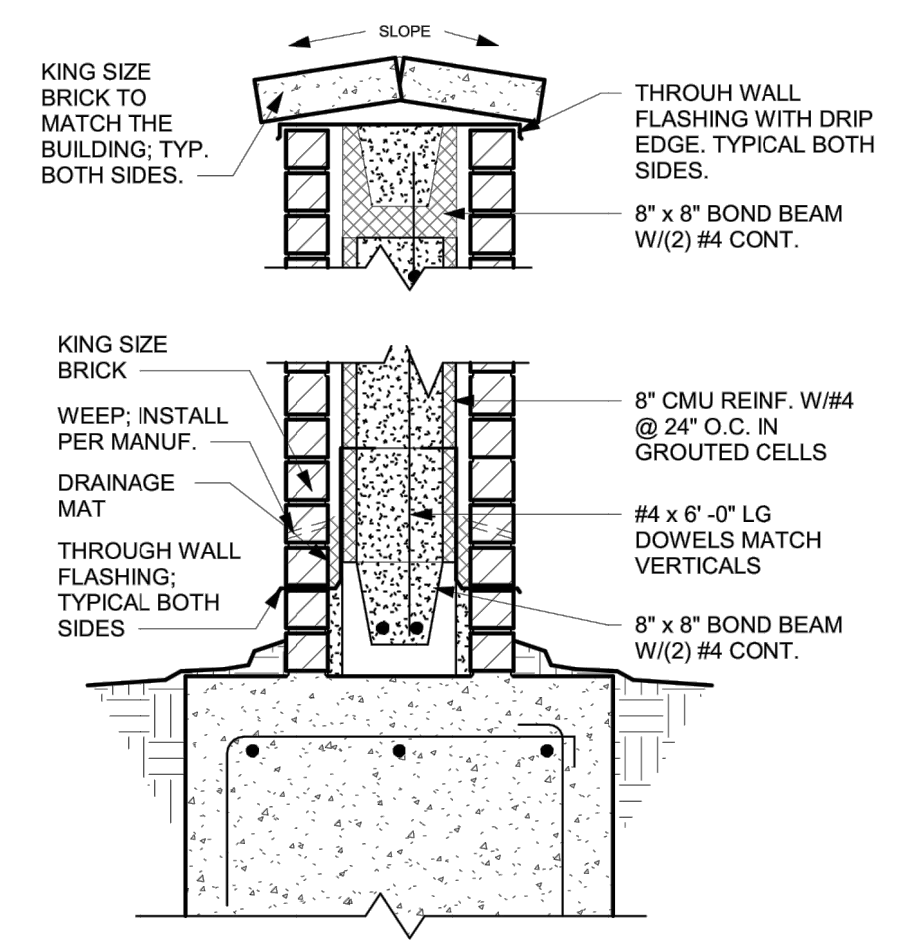
D5 TRASH ENCLOSURE SECTION
3/4" = 1'-0"



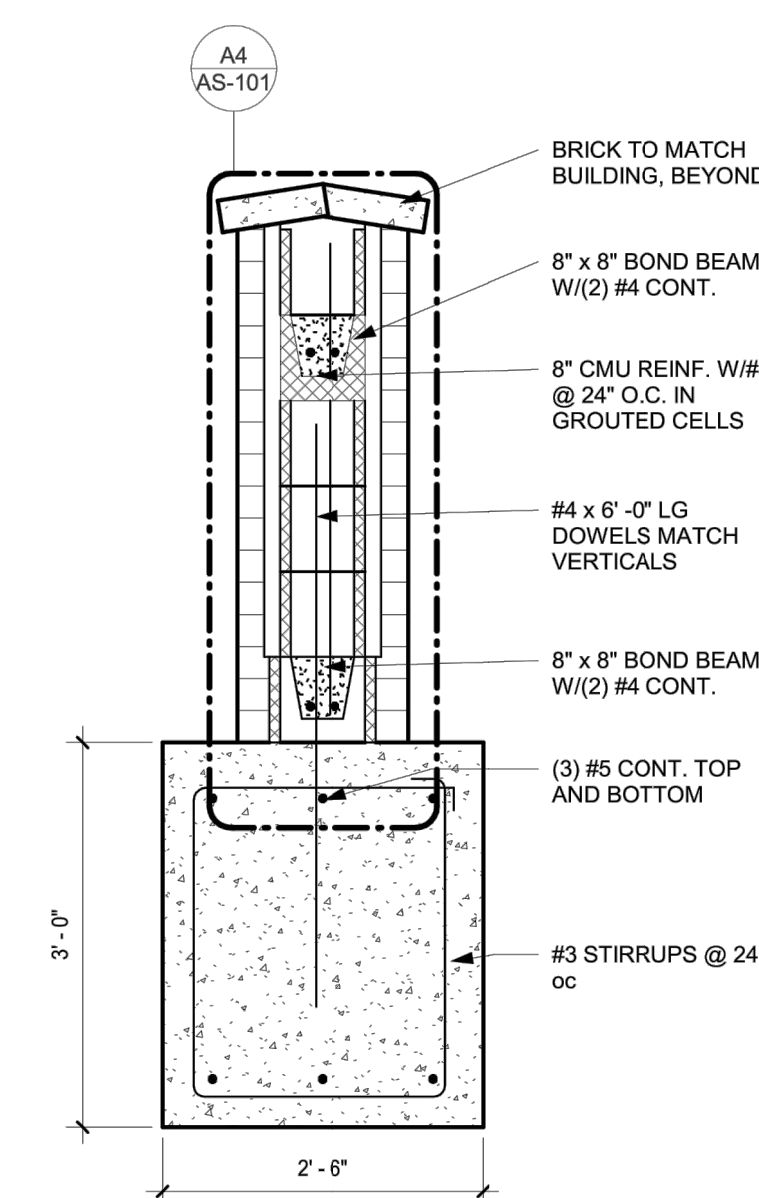
B5 TRASH ENCLOSURE ELEVATION
1/4" = 1'-0"



A5 TRASH ENCLOSURE FLOOR PLAN
1/4" = 1'-0"



A4 MONUMENT SIGN SECTION
1" = 1'-0"



A3 MONUMENT SIGN SECTION
3/4" = 1'-0"

NOTE: THIS SHEET IS FOR REFERENCE ONLY. CONTRACTOR SHALL BUILD PER ARCHITECTS LATEST PLAN SET

P:\GENERAL PROJECTS\15511-ES-MEADOWOOD-II-STEPHAN\CAD\15511_COVER & DETAILS.DWG 10/20/2022