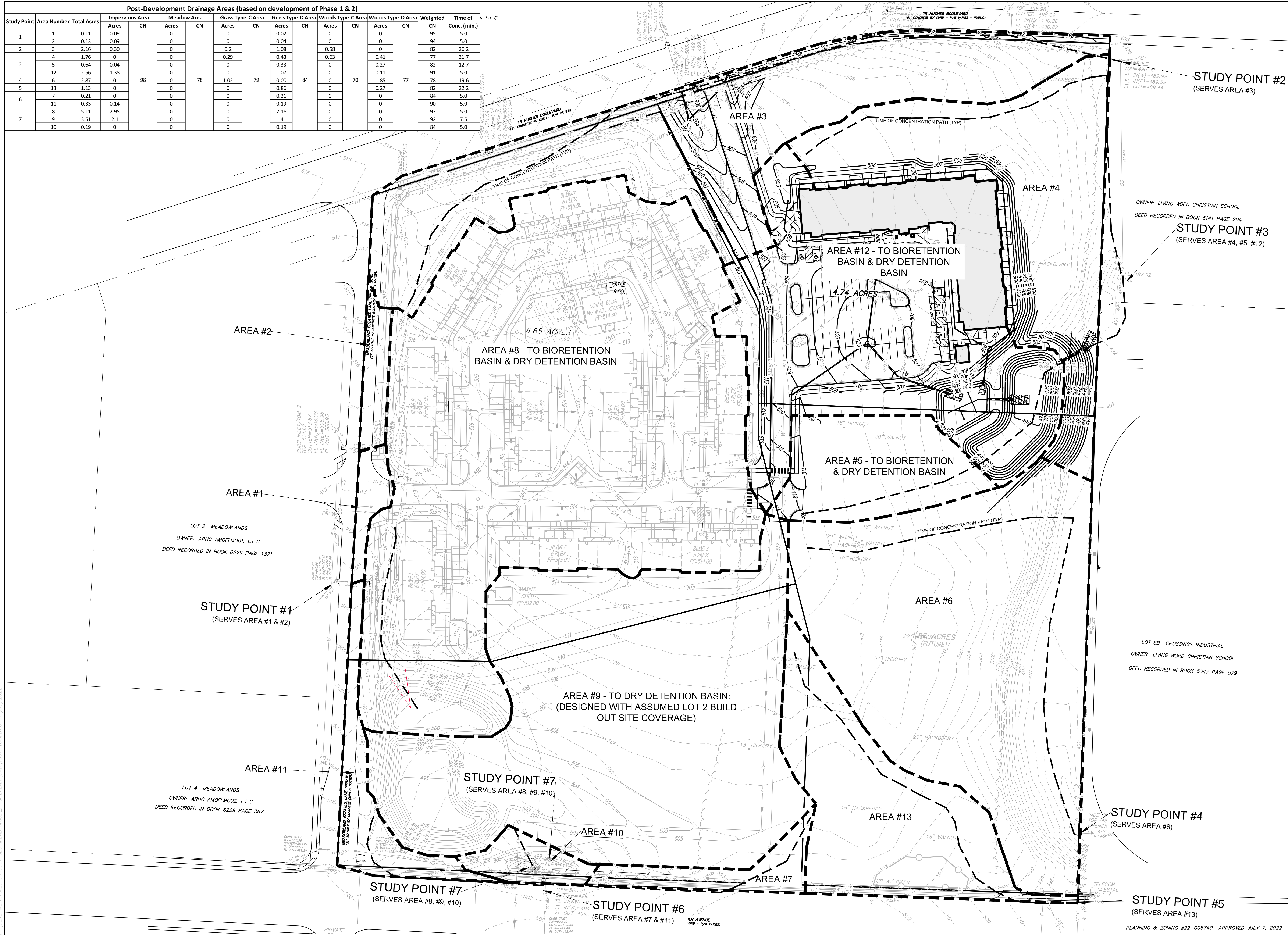


Post-Development Drainage Areas (based on development of Phase 1 & 2)												
Study Point	Area Number	Total Acres	Impervious Area		Meadow Area		Grass Type-C Area		Grass Type-D Area		Weighted CN	Time of Conc. (min.)
			Acres	CN	Acres	CN	Acres	CN	Acres	CN		
1	1	0.11	0.09								95	5.0
	2	0.13	0.09								94	5.0
2	3	2.16	0.30								82	20.2
	4	1.76	0								77	21.7
3	5	0.64	0.04								82	12.7
	12	2.56	1.38								91	5.0
4	6	2.87	0	98	78	1.02	79	0.00	84	70	77	19.6
	13	1.13	0								82	22.2
5	7	0.21	0								84	5.0
	11	0.33	0.14								90	5.0
6	8	5.11	2.95								92	5.0
	9	3.51	2.1								92	7.5
7	10	0.19	0								84	5.0



**ESS**  
Engineering Surveys & Services  
DELIVERING YOUR VISION™

1113 Fay Street, Columbia, MO 65201  
973-449-2646  
602 El Dorado Drive, Jefferson City, MO 65101  
673-436-3303  
1775 West Main Street, Sedalia, MO 65301  
660-826-8618  
www.ess-inc.com  
MO Engineering Corp. # 200405018

N  
0 1"  
Scale: 1" = 50'

**MEADOWOOD ESTATES II, LP**  
**MEADOWOOD ESTATES - PHASE II**  
LOT 4 - MEADOWOOD ESTATES SUBDIVISION  
O'FALLON, ST. CHARLES COUNTY, MISSOURI

7/27/2022

KELLY A. LOHSANDT  
PROFESSIONAL ENGINEER  
NUMBER PE-2021032813

*Kelly A. Lohsandt*

KELLY A. LOHSANDT  
PROFESSIONAL ENGINEER  
PE-2021032813

IF ORIGINAL SIGNATURE OR DIGITAL AUTHENTICATION IS NOT PRESENT THIS MEDIA SHOULD NOT BE CONSIDERED A CERTIFIED DOCUMENT.

Date  
**JULY 27, 2022**

Revised

Design: KAL Drawn: KAL

POST DEVELOPMENT DRAINAGE AREA MAP

Sheet  
**C15.02**

PLANNING & ZONING #22-005740 APPROVED JULY 7, 2022

ESS&S PROJECT NO. 15511