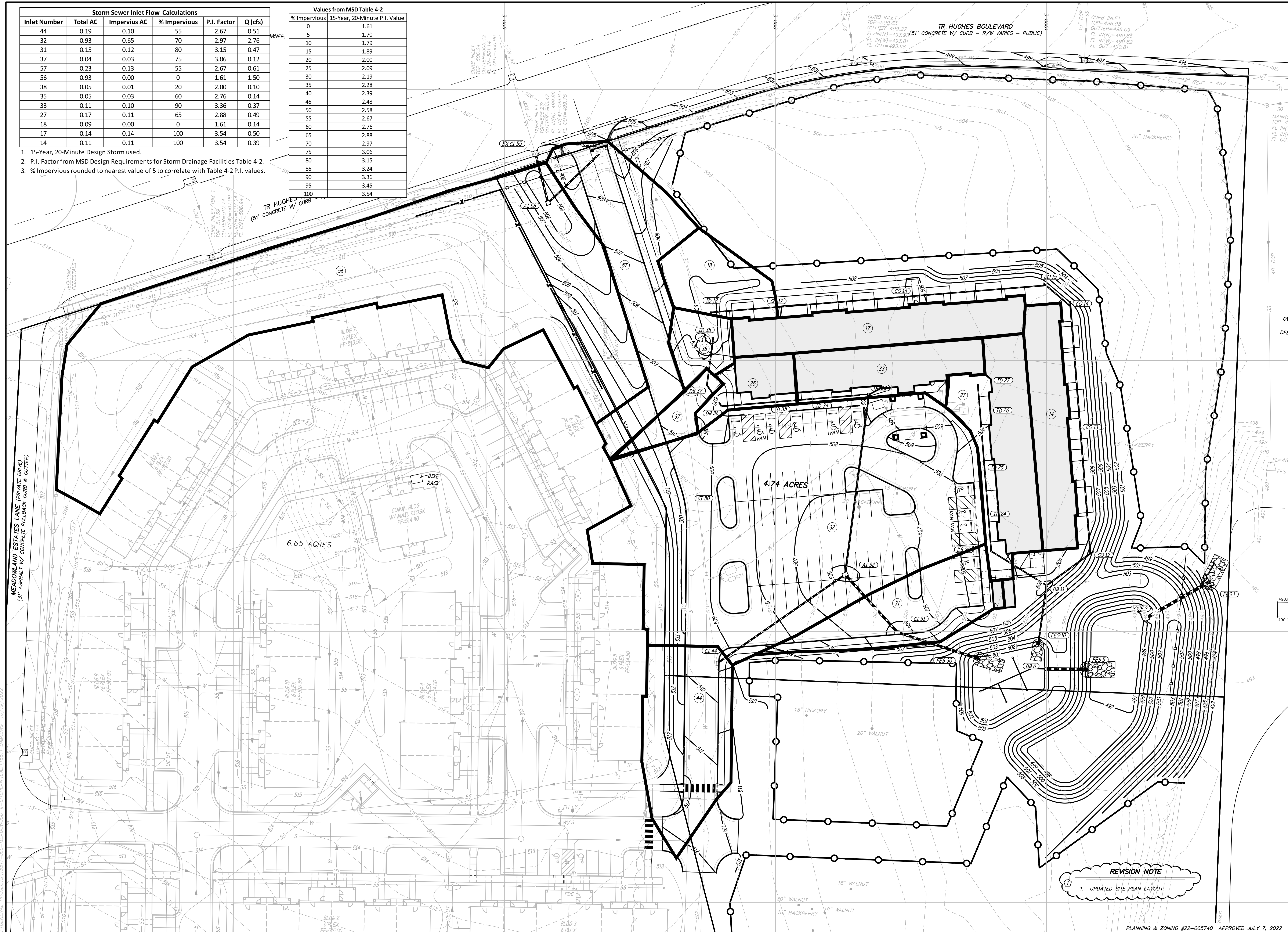


| Storm Sewer Inlet Flow Calculations | | | | | |
|-------------------------------------|----------|---------------|--------------|-------------|---------|
| Inlet Number | Total AC | Impervious AC | % Impervious | P.I. Factor | Q (cfs) |
| 44 | 0.19 | 0.10 | 55 | 2.67 | 0.51 |
| 32 | 0.93 | 0.65 | 70 | 2.97 | 2.76 |
| 31 | 0.15 | 0.12 | 80 | 3.15 | 0.47 |
| 37 | 0.04 | 0.03 | 75 | 3.06 | 0.12 |
| 57 | 0.23 | 0.13 | 55 | 2.67 | 0.61 |
| 56 | 0.93 | 0.00 | 0 | 1.61 | 1.50 |
| 38 | 0.05 | 0.01 | 20 | 2.00 | 0.10 |
| 35 | 0.05 | 0.03 | 60 | 2.76 | 0.14 |
| 33 | 0.11 | 0.10 | 90 | 3.36 | 0.37 |
| 27 | 0.17 | 0.11 | 65 | 2.88 | 0.49 |
| 18 | 0.09 | 0.00 | 0 | 1.61 | 0.14 |
| 17 | 0.14 | 0.14 | 100 | 3.54 | 0.50 |
| 14 | 0.11 | 0.11 | 100 | 3.54 | 0.39 |

| Values from MSD Table 4-2 | | |
|---------------------------|-------------------------------|--|
| % Impervious | 15-Year, 20-Minute P.I. Value | |
| 0 | 1.61 | |
| 5 | 1.70 | |
| 10 | 1.79 | |
| 15 | 1.89 | |
| 20 | 2.00 | |
| 25 | 2.09 | |
| 30 | 2.19 | |
| 35 | 2.28 | |
| 40 | 2.39 | |
| 45 | 2.48 | |
| 50 | 2.58 | |
| 55 | 2.67 | |
| 60 | 2.76 | |
| 65 | 2.88 | |
| 70 | 2.97 | |
| 75 | 3.06 | |
| 80 | 3.15 | |
| 85 | 3.24 | |
| 90 | 3.36 | |
| 95 | 3.45 | |
| 100 | 3.54 | |

- 15-Year, 20-Minute Design Storm used.
- P.I. Factor from MSD Design Requirements for Storm Drainage Facilities Table 4-2.
- % Impervious rounded to nearest value of 5 to correlate with Table 4-2 P.I. values.



ES&S
Engineering Surveys & Services
DELIVERING YOUR VISION™
1113 Fay Street, Columbia, MO 65201
973-449-2646
802 El Dorado Drive, Jefferson City, MO 65101
873-636-3303
1775 West Main Street, Sedalia, MO 65301
660-826-8618
www.es-inc.com
MO Engineering Corp. # 2004005018

N
Scale: 1" = 30'

MEADOWOOD ESTATES II, LP
MEADOWOOD ESTATES - PHASE II
LOT 4 - MEADOWOOD ESTATES SUBDIVISION
O'FALLON, ST. CHARLES COUNTY, MISSOURI

4/24/2022

STATE OF MISSOURI
KELLY A. LOHSANDT
NUMBER
PE-2021032813
Professional Engineer
Kelly A. Lohsandt

KELLY A. LOHSANDT
PROFESSIONAL ENGINEER
PE-2021032813

IF ORIGINAL SIGNATURE OR DIGITAL AUTHENTICATION IS NOT PRESENT THIS MEDIA SHOULD NOT BE CONSIDERED A CERTIFIED DOCUMENT.

Date
JULY 27, 2022

Revised
① CITY COMMENTS SEPT. 29, 2022

Design: KAL Drawn: KAL

STORM SEWER DRAINAGE AREA MAP

Sheet
C15.03

ES&S PROJECT NO. 15511

REVISION NOTE
① UPDATED SITE PLAN LAYOUT.