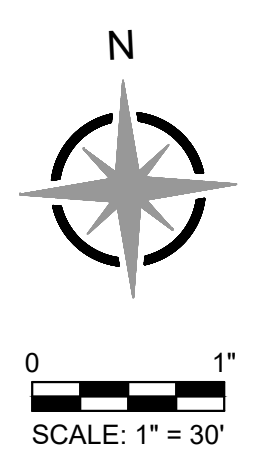




Engineering Surveys & Services

DELIVERING YOUR VISION™
1113 Fay Street, Columbia, MO 65201
973-449-2646
802 El Dorado Drive, Jefferson City, MO 65101
673-636-3303
1775 West Main Street, Sedalia, MO 65201
660-826-8618
www.es-inc.com
MO Engineering Corp. # 2204005018



MEADOWOOD ESTATES II, LP MEADOWOOD ESTATES - PHASE II

LOT 4 - MEADOWOOD ESTATES SUBDIVISION
O'FALLON, ST. CHARLES COUNTY, MISSOURI

1/6/2023



Kelly A. Lohsandt

KELLY A. LOHSANDT
PROFESSIONAL ENGINEER
PE-2021032813

IF ORIGINAL SIGNATURE OR DIGITAL AUTHENTICATION IS NOT PRESENT THIS MEDIA SHOULD NOT BE CONSIDERED A CERTIFIED DOCUMENT.

Date
JULY 27, 2022

Revised
① CITY COMMENTS OCT. 5, 2022
② ESI #1 JAN. 6, 2023

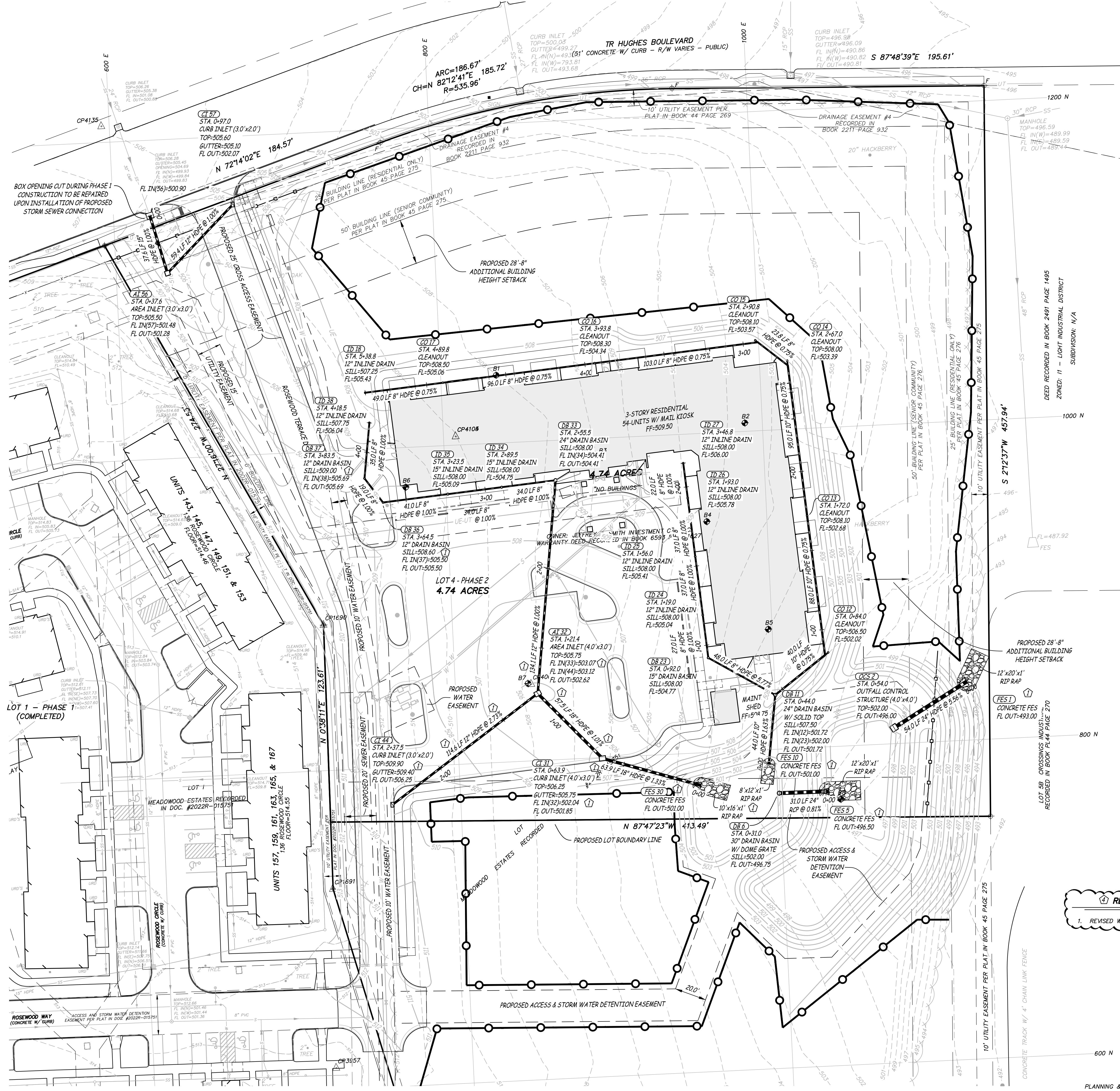
Design: KAL Drawn: BR

STORM SEWER PLAN

Sheet

C4.01

ES&S PROJECT NO. 15511



REVISION NOTE
1. REVISED WATER SERVICE LATERALS.

P:\GENERAL PROJECTS\15511-ES-MEADOWOOD-II-STEP1\AM\CAD\15511 SITE PLANNING 1/25/2023