



Engineering Surveys & Services

DELIVERING YOUR VISION™

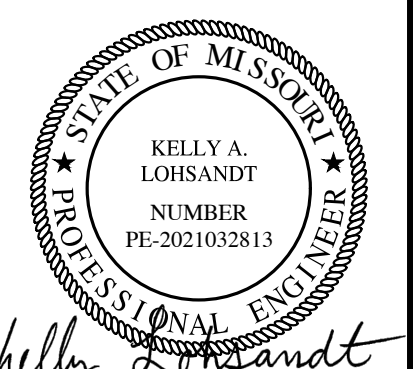
1113 Fay Street, Columbia, MO 65201
573-449-2646
602 El Dorado Drive, Jefferson City, MO 65101
673-636-3303
1775 West Main Street, Sedalia, MO 65301
660-826-8618
www.ess-inc.com
MO Engineering Corp. # 2004005018



0 1"
SCALE: 1" = 20'

MEADOWOOD ESTATES II, LP
MEADOWOOD ESTATES - PHASE II
LOT 4 - MEADOWOOD ESTATES SUBDIVISION
O'FALLON, ST. CHARLES COUNTY, MISSOURI

1/6/2023



KELLY A. LOHSANDT
PROFESSIONAL ENGINEER
PE-2021032813

IF ORIGINAL SIGNATURE OR DIGITAL AUTHENTICATION IS NOT PRESENT THIS MEDIA SHOULD NOT BE CONSIDERED A CERTIFIED DOCUMENT.

Date
JULY 27, 2022

Revised
1 CITY COMMENTS OCT. 5, 2022
2 ESI #1 JAN. 6, 2023

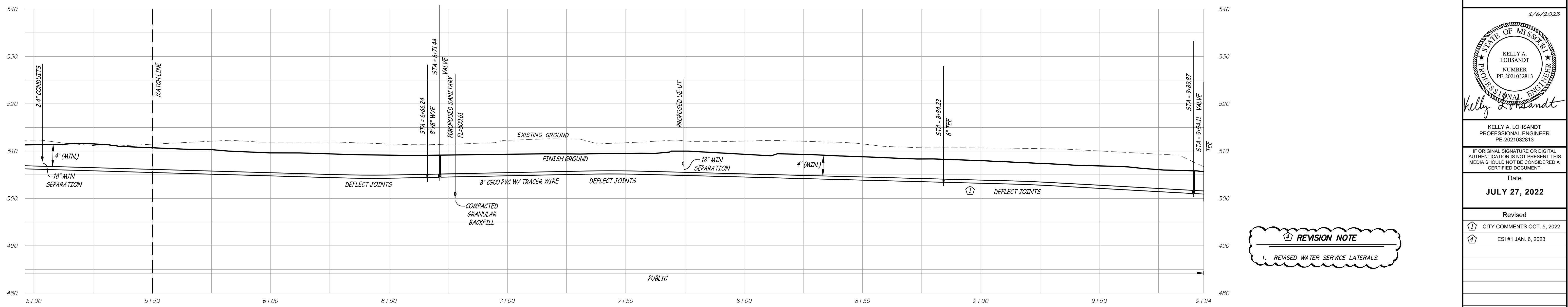
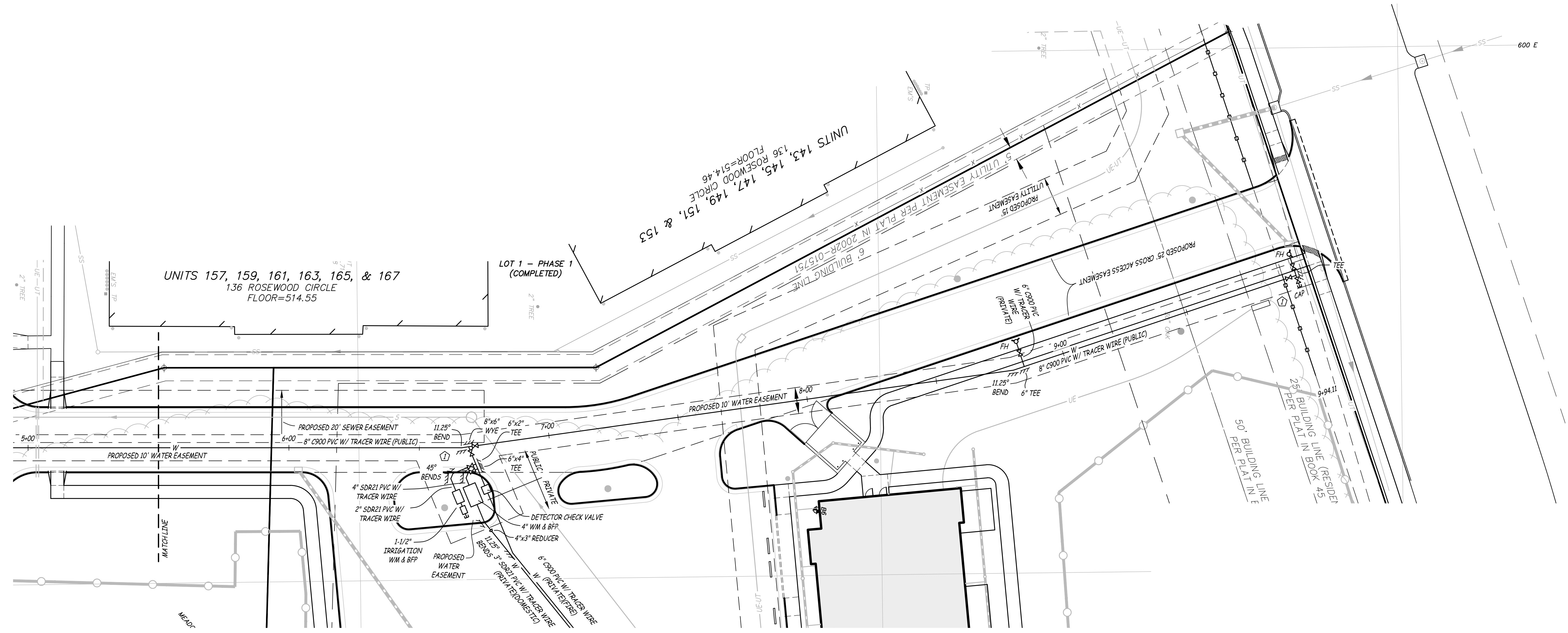
REVISION NOTE
1. REVISED WATER SERVICE LATERALS.

Design: KAL Drawn: BR

WATER LINE PLAN & PROFILE

Sheet
C7.03

ESS&S PROJECT NO. 15511



WATER LINE (PUBLIC)
SCALE - HORIZ. 1" = 20'
VERT. 1" = 10'

P:\GENERAL PROJECTS\15511-ES-MEADOWOOD-II-STEP\PLAN\CAD\15511 SITE PLAN.DWG 1/25/2023