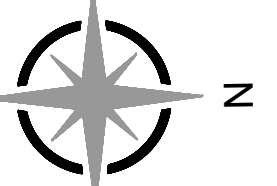




Engineering Surveys
& Services

DELIVERING YOUR VISION™
1113 Fay Street, Columbia, MO 65201
573-449-2646
802 El Dorado Drive, Jefferson City, MO 65101
673-636-3303
1775 West Main Street, Sedalia, MO 65301
660-826-8618
www.ess-inc.com
MO Engineering Corp. # 2004005018

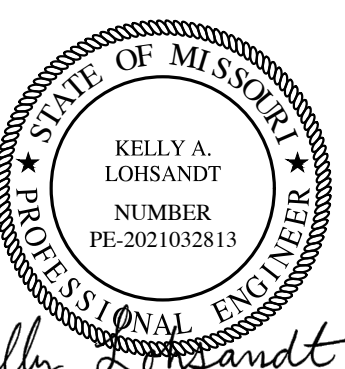


0 1"
SCALE: 1" = 20'

MEADOWOOD ESTATES II, LP MEADOWOOD ESTATES - PHASE II

LOT 4 - MEADOWOOD ESTATES SUBDIVISION
O'FALLON, ST. CHARLES COUNTY, MISSOURI

7/27/2022



Kelly A. Lohsandt

KELLY A. LOHSANDT
PROFESSIONAL ENGINEER
PE-2021032813

IF ORIGINAL SIGNATURE OR DIGITAL
AUTHENTICATION IS NOT PRESENT THIS
MEDIA SHOULD NOT BE CONSIDERED A
CERTIFIED DOCUMENT.

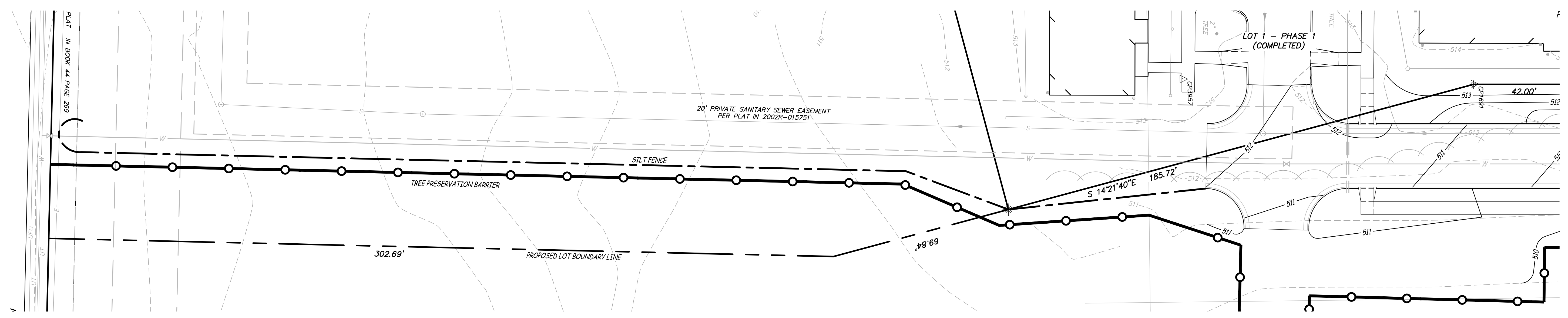
Date
JULY 27, 2022

Revised

Design: KAL Drawn: BR

FINAL EROSION
CONTROL PLAN

Sheet
C9.03



P:\GENERAL PROJECTS\15511-ES-MEADOWOOD-II-STEP\PLAN\CAD\15511 SITE PLAN.DWG 10/19/2022