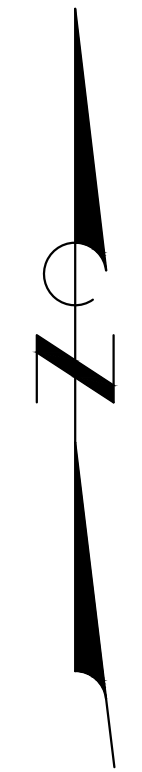
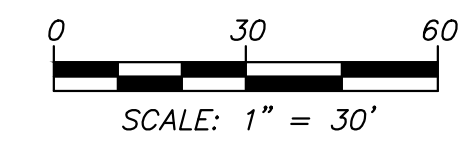
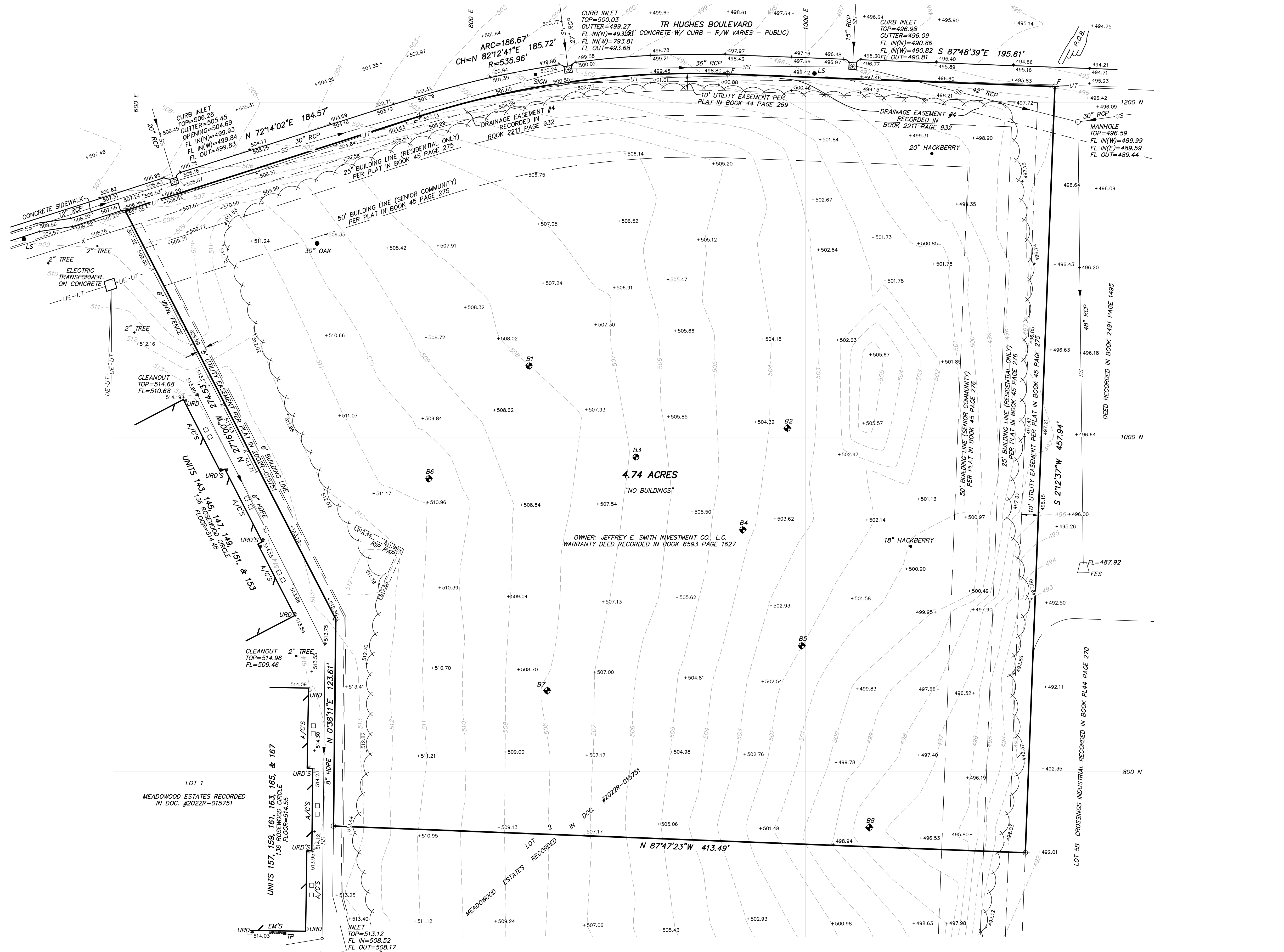


MEADOWOOD ESTATES PHASE II

O'FALLON, ST. CHARLES COUNTY, MISSOURI
 ALTA/NSPS LAND TITLE SURVEY
 MHDC PROJECT NO. 21-029-HT
 MAY 18, 2022



BEARINGS ARE REFERENCED TO THE
 LINES OF LOT 2 MEADOWOOD ESTATES
 RECORDED IN DOC. #2022R-015751



LEGEND

	PROPERTY LINE
	BUILDING SETBACK
	UNDERGROUND ELECTRIC LINE
	UNDERGROUND TELECOMMUNICATIONS LINE
	SANITARY SEWER LINE
	STORM SEWER LINE
	GAS LINE
	WATER LINE
	FENCE
	TREE & BRUSH LINE
	EXISTING CONTOUR
	IRON
	TEST BORING
	AIR CONDITIONER
	CORRUGATED METAL PIPE
	ELECTRIC METER
	FLARED END SECTION
	FIRE HYDRANT
	FLOW LINE
	HIGH DENSITY POLYETHYLENE PIPE
	LIGHT POLE
	LIGHT STANDARD
	POLYVINYL CHLORIDE PIPE
	REINFORCED CONCRETE PIPE
	TELECOMMUNICATIONS PEDESTAL
	UNDERGROUND ROOF DRAIN
	WATER VALVE

ALL MONUMENTS ARE SET UNLESS SHOWN (F) FOUND

UTILITY NOTES

THE LOCATIONS, SIZES, AND MATERIAL TYPES OF UNDERGROUND UTILITIES INDICATED ON THE PLAT, NOT VISIBLE OR APPARENT FROM THE SURFACE, ARE SHOWN IN THEIR APPROXIMATE LOCATIONS FROM A MISSOURI ONE CALL SYSTEM LOCATE, OR UTILITY COMPANY RECORDS AND WERE NOT VERIFIED IN THE FIELD. UNDERGROUND ELECTRIC TO LIGHT STANDARDS WAS NOT LOCATED.

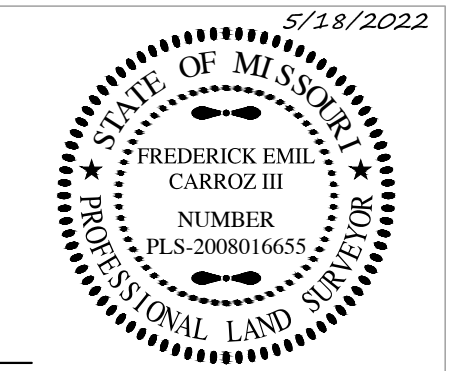
- | | |
|--|--|
| WATER
CITY OF O'FALLON
100 N MAIN ST.
O'FALLON, MO 63366
CONTACT: 636-281-2858
AS SHOWN | GAS
SPIRE GAS
6400 GRAHAM ROAD
ST. LOUIS, MO 63134
CONTACT: KENT THAEMERT 314-349-2967 |
| ELECTRIC
AMEREN UE
200 CALLAHAN ROAD
WENTZVILLE, MO 63385
CONTACT: NATHAN GIESSMANN 636-639-8215
AS SHOWN | SANITARY SEWER
CITY OF O'FALLON
100 N MAIN ST.
O'FALLON, MO 63366
CONTACT: 636-281-2858
AS SHOWN |
| TELECOMMUNICATIONS
CENTURYLINK
1151 CENTURYTEL DRIVE, BLDG A
WENTZVILLE, MO 63385
CONTACT: MICHELE GERTEISEN 636-332-7392 | STORM SEWER
CITY OF O'FALLON
100 N MAIN ST.
O'FALLON, MO 63366
CONTACT: 636-281-2858
AS SHOWN |
| CHARTER COMMUNICATIONS
815 CHARTER COMMONS DRIVE
TOWN AND COUNTRY, MO 63017
CONTACT: 833-267-6094 (GENERAL)
800-777-3691 (CONSTRUCTION) | |

BENCH MARK

BM - MISSOURI DEPARTMENT OF NATURAL RESOURCES GEOGRAPHIC REFERENCE SYSTEM MONUMENT "SC-47" LOCATED SOUTH OF A PRIVATE ROAD TO BELLEAU FARMS AND 51' NORTHEAST OF THE CENTERLINE OF MISSOURI HIGHWAY 79, 28.8' SOUTHEAST OF UTILITY POLE #W354 AND 15.5' WEST OF A SIGN.
 ELEVATION = 445.87

ENGINEERING SURVEYS & SERVICES
 MISSOURI L.S. CORP. #2004004672
 1113 FAY STREET
 COLUMBIA, MO 65201
 PHONE: (573) 449-2646
 EMAIL: FCARROZ@ESS-INC.COM

Frederick E. Carroz III
 FREDERICK E. CARROZ III
 PROFESSIONAL LAND SURVEYOR
 PLS - 2008016655



MEADOWOOD ESTATES II, L.P.
 TR HUGHES BOULEVARD
 LOT 2 - MEADOWOOD ESTATES
 SECTION 22 147N R3E
 O'FALLON, ST. CHARLES COUNTY, MISSOURI