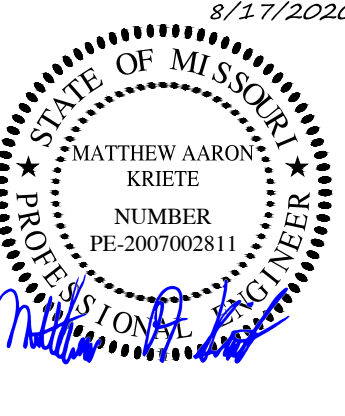




Engineering Surveys & Services
 Consulting Engineers, Land Surveyors, and Geoprotectionals
 Analytical and Material Laboratories
 1113 Ivy Street, Columbia, Missouri 65201
 573-449-2646 | www.ess-inc.com
 Other Offices:
 Jefferson City - Sedalia - Wildwood
 Missouri Engineering Corporation #200400018

MEADOWOOD ESTATES - PHASE I
 LOT 1 - MEADOWOOD ESTATES SUBDIVISION
 OF FALLON, ST. CHARLES COUNTY, MISSOURI



MATTHEW A. KRIETE
 PROFESSIONAL ENGINEER
 PE-200702811

IF ORIGINAL SIGNATURE OR DIGITAL AUTHENTICATION IS NOT PRESENT THIS MEDIA SHOULD NOT BE CONSIDERED A CERTIFIED DOCUMENT.

Date
MAY 22, 2020

Revised	
1	JULY 14, 2020 CITY COMMENTS
2	AUGUST 17, 2020 CITY COMMENTS

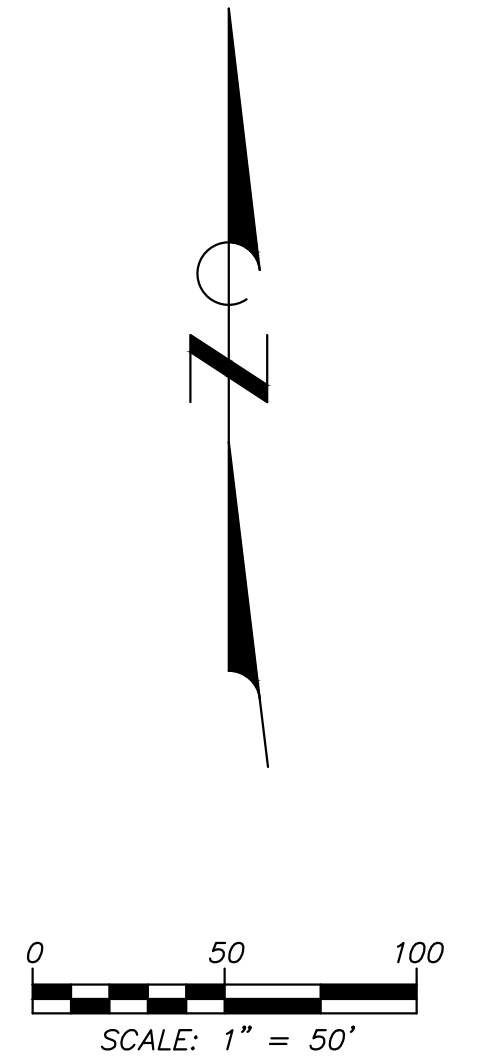
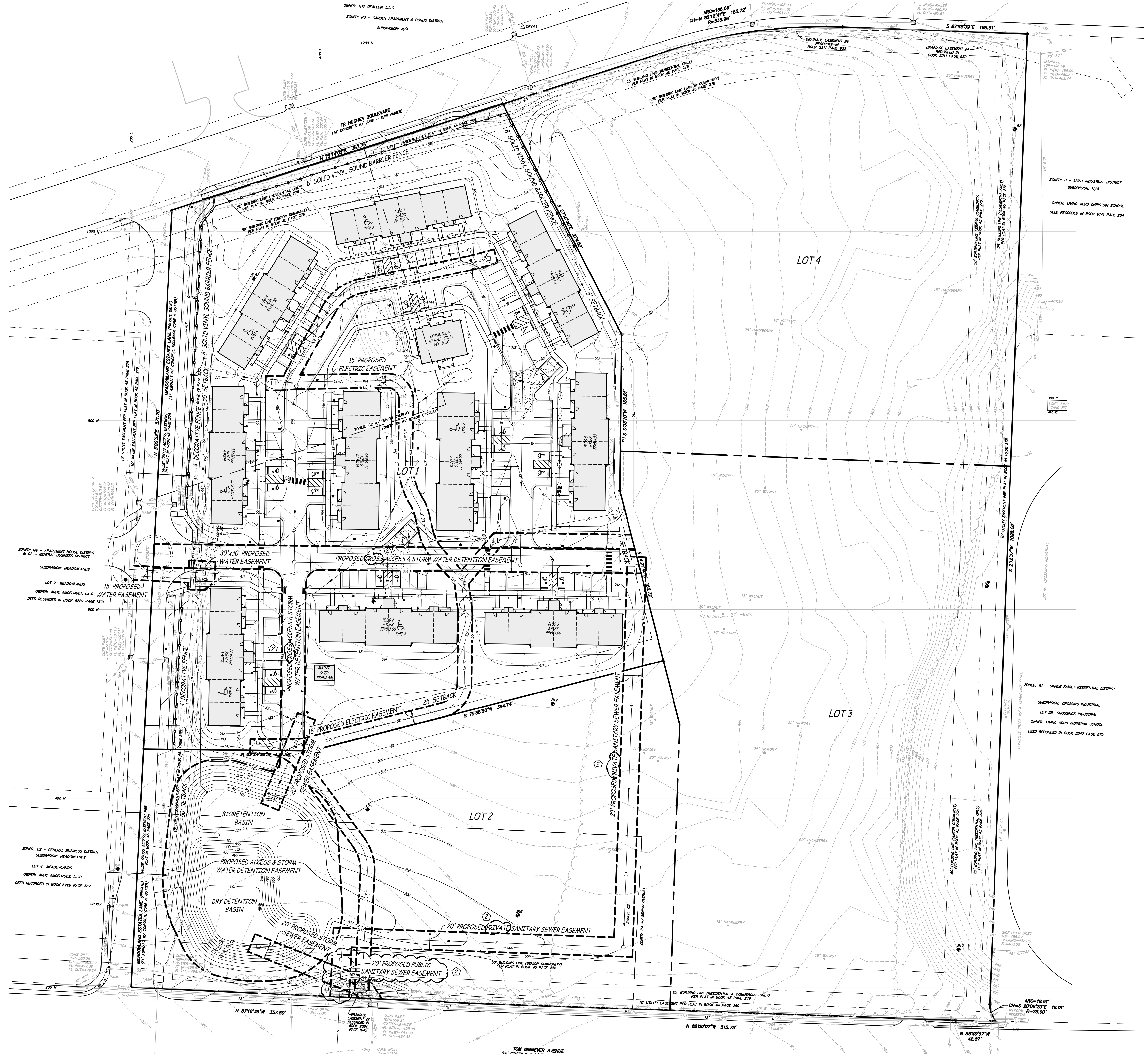
Design: KAH Drawn: MJS

OVERALL LAYOUT PLAN

Sheet

C1.01

ES&S PROJECT NO. 14480



X:\CURRENT\DRAWINGS\14480\14480 SITE PLAN.DWG 11/24/2020