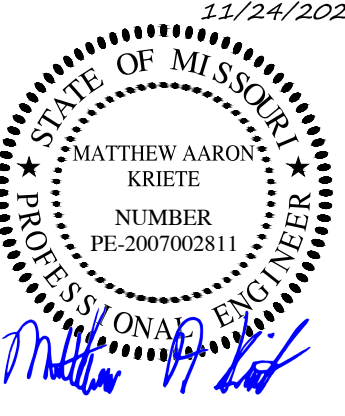




Engineering Surveys & Services
 Consulting Engineers, Land Surveyors, and Geoprosessionals
 Analytical and Material Laboratories
 1113 Ely Street, Columbia, Missouri 65201
 573-449-2646 | www.ese-mo.com
 Other Offices:
 Jefferson City - Sedalia - Wildwood
 Missouri Engineering Corporation #2004005018

MEADOWWOOD ESTATES - PHASE I
 LOT 1 - MEADOWWOOD ESTATES SUBDIVISION
 OF FALLON, ST. CHARLES COUNTY, MISSOURI



MATTHEW A. KRIETE
 PROFESSIONAL ENGINEER
 PE-200702281

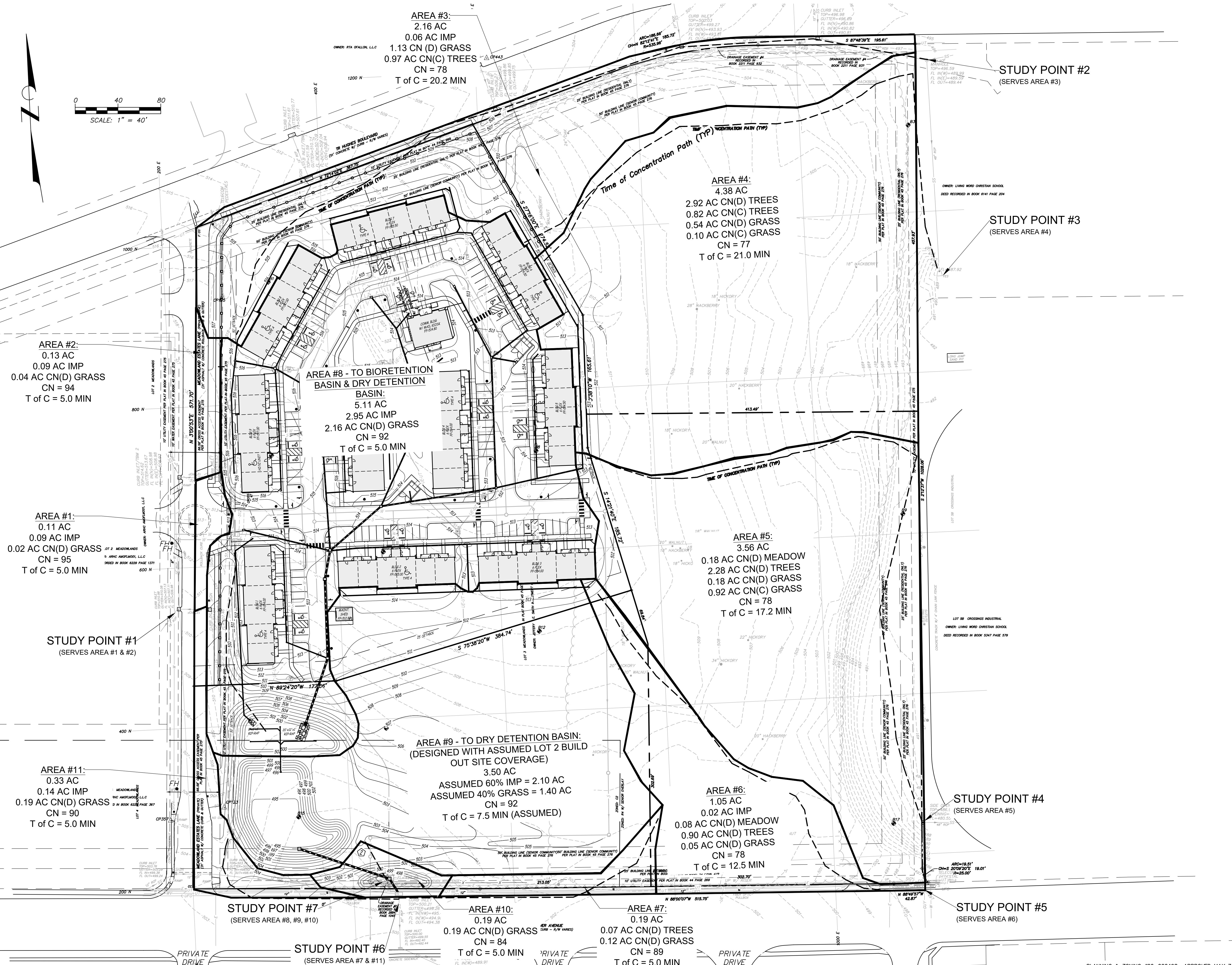
Date
MAY 22, 2020

Revised	
1	JULY 14, 2020 CITY COMMENTS
2	AUGUST 17, 2020 CITY COMMENTS
4	NOVEMBER 24, 2020 ESI #4

Design: KAH Drawn: MJS
POST DEVELOPMENT DRAINAGE AREA MAP
 Sheet

C15.02

ES&S PROJECT NO. 14480



Y:\CURRENTDRAWINGS\ES\14480\14480_DAM.DWG 11/24/2020