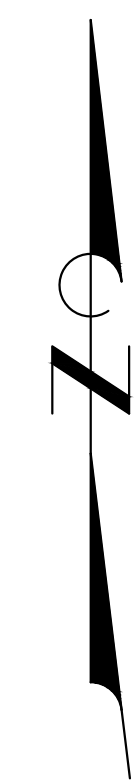
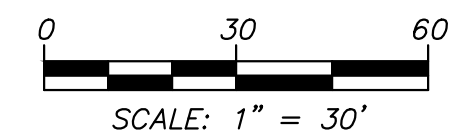


**Engineering Surveys & Services**  
 Consulting Engineers, Land Surveyors, and Geoprosessionals  
 Analytical and Material Laboratories  
 1113 Ivy Street, Columbia, Missouri 65201  
 573-449-2646 | www.ess-mo.com  
 Other Offices:  
 Jefferson City - Sedalia - Wildwood  
 Missouri Engineering Corporation #200400018

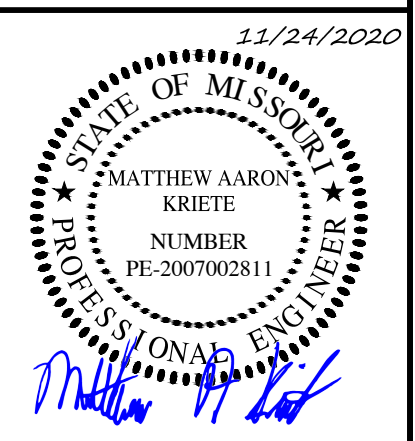
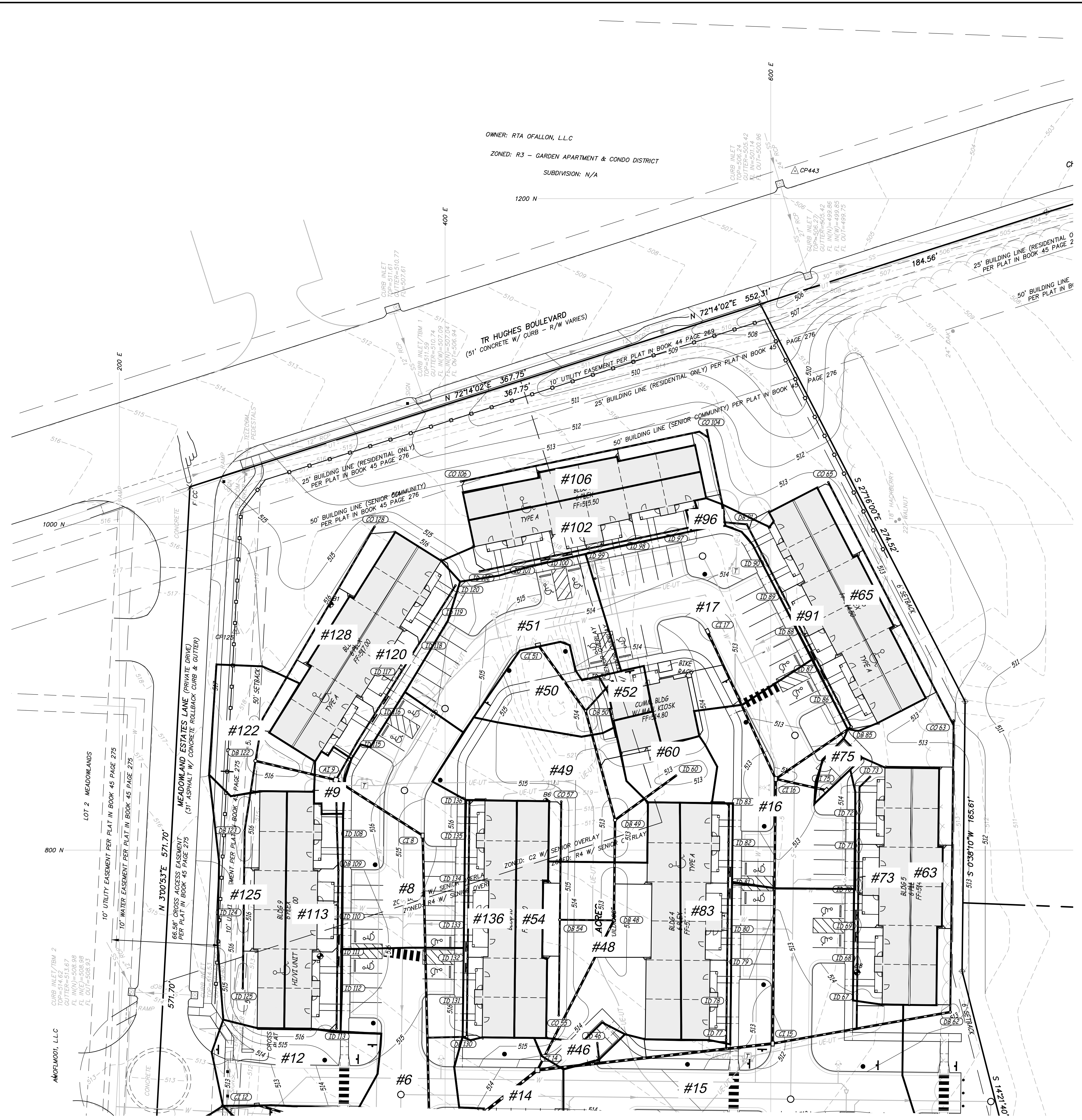
**MEADOWWOOD ESTATES - PHASE I**  
 LOT 1 - MEADOWWOOD ESTATES SUBDIVISION  
 OF FALLON, ST. CHARLES COUNTY, MISSOURI



Storm Sewer Inlet Flow Calculations					
Inlet Number	Total AC	Impervious AC	% Impervious	P.I. Factor	Q (cfs)
106	0.06	0.06	100	3.54	0.21
102	0.13	0.09	70	2.97	0.39
96	0.01	0.01	100	3.54	0.04
91	0.14	0.09	65	2.88	0.40
65	0.06	0.06	100	3.54	0.21
51	0.15	0.13	85	3.24	0.49
17	0.24	0.16	65	2.88	0.69
120	0.12	0.08	65	2.88	0.35
128	0.06	0.06	100	3.54	0.21
122	0.09	0.01	10	1.79	0.16
9	0.02	0.00	0	1.61	0.03
8	0.23	0.18	80	3.15	0.72
113	0.11	0.08	75	3.06	0.34
125	0.14	0.06	45	2.48	0.35
52	0.02	0.01	50	2.58	0.05
50	0.07	0.01	15	1.89	0.13
60	0.05	0.02	40	2.39	0.12
75	0.01	0.01	100	3.54	0.04
73	0.12	0.07	60	2.76	0.33
63	0.06	0.06	100	3.54	0.21
16	0.22	0.14	65	2.88	0.63
83	0.10	0.08	80	3.15	0.32
49	0.16	0.00	0	1.61	0.26
48	0.22	0.07	30	2.19	0.48
54	0.07	0.07	100	3.54	0.25
136	0.11	0.07	65	2.88	0.32
12	0.10	0.05	50	2.58	0.26
6	0.25	0.18	70	2.97	0.74
14	0.09	0.06	65	2.88	0.26
15	0.50	0.33	65	2.88	1.44
46	0.02	0.01	50	2.58	0.05
33	0.12	0.07	60	2.76	0.33
39	0.10	0.06	60	2.76	0.28
41	0.15	0.12	80	3.15	0.47
5	0.13	0.11	85	3.24	0.42
25	0.11	0.06	55	2.67	0.29
142	0.01	0.00	0	1.61	0.02
141	0.07	0.06	85	3.24	0.23
1	0.19	0.00	0	1.61	0.31
Existing Inlet 1	2.53	1.05	40	2.39	6.05
Existing Inlet 2	0.92	0.44	50	2.58	2.37

- 15-Year, 20-Minute Design Storm used.
- P.I. Factor from MSD Design Requirements for Storm Drainage Facilities Table 4-2.
- % Impervious rounded to nearest value of 5 to correlate with Table 4-2 P.I. values.

Values from MSD Table 4-2	
% Impervious	15-Year, 20-Minute P.I. Value
0	1.61
5	1.70
10	1.79
15	1.89
20	2.00
25	2.09
30	2.19
35	2.28
40	2.39
45	2.48
50	2.58
55	2.67
60	2.76
65	2.88
70	2.97
75	3.06
80	3.15
85	3.24
90	3.36
95	3.45
100	3.54



MATTHEW A. KRIETE  
 PROFESSIONAL ENGINEER  
 PE-200700281

IF ORIGINAL SIGNATURE OR DIGITAL AUTHENTICATION IS NOT PRESENT THIS MEDIA SHOULD NOT BE CONSIDERED A CERTIFIED DOCUMENT.

Date  
**MAY 22, 2020**

Revised  
 JULY 14, 2020

CITY COMMENTS  
 NOVEMBER 24, 2020

ESI #4

Design: KAH Drawn: MJS

**STORM SEWER DRAINAGE AREA MAP**

Sheet

**C15.03**

ESS&S PROJECT NO. 14480

X:\CURRENT\DRAWINGS\14480\14480-DAM.DWG 11/24/2020