

Engineering Surveys & Services
 Consulting Engineers, Land Surveyors, and Geoprotectionals
 Analytical and Material Laboratories
 1113 Ivy Street, Columbia, Missouri 65201
 573-449-2646 | www.ess-mo.com
 Other Offices:
 Jefferson City - Sedalia - Wildwood
 Missouri Engineering Corporation # 200400018

MEADOWOOD ESTATES - PHASE I
 LOT 1 - MEADOWOOD ESTATES SUBDIVISION
 OF FALLON, ST. CHARLES COUNTY, MISSOURI



MATTHEW A. KRIETE
 PROFESSIONAL ENGINEER
 PE-2007002811

IF ORIGINAL SIGNATURE OR DIGITAL AUTHENTICATION IS NOT PRESENT THIS MEDIA SHOULD NOT BE CONSIDERED A CERTIFIED DOCUMENT

Date
MAY 22, 2020

- Revised
- ① JULY 14, 2020
CITY COMMENTS
 - ② AUGUST 17, 2020
CITY COMMENTS
 - ④ NOVEMBER 24, 2020
ESI #4

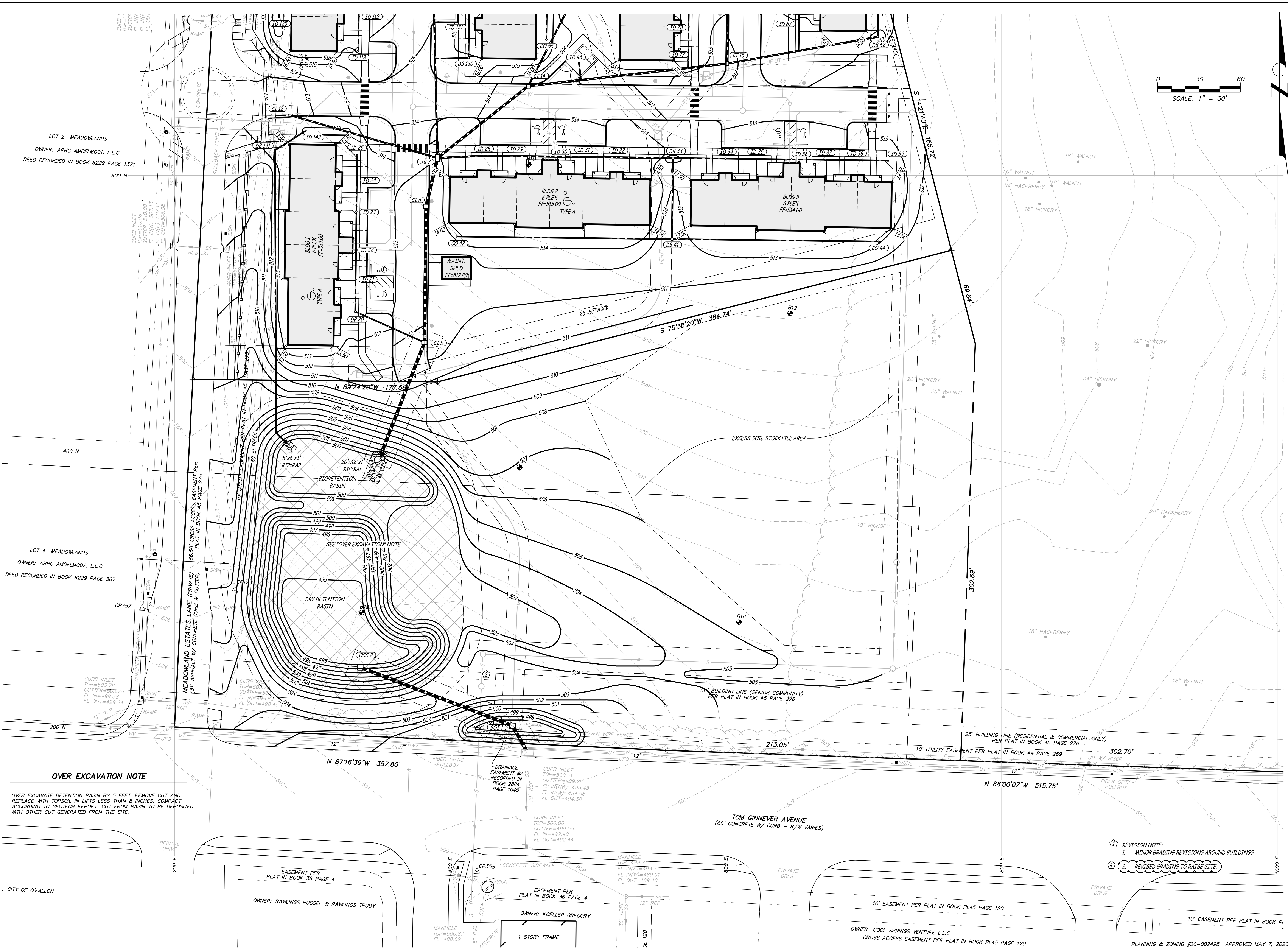
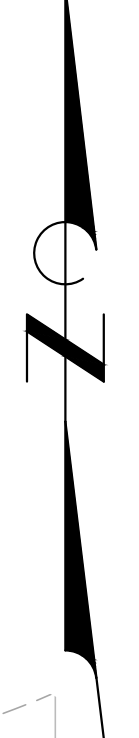
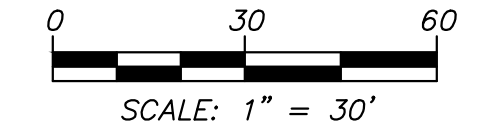
Design: KAH Drawn: MJS

GRADING & DRAINAGE PLAN

Sheet

C3.02

ES&S PROJECT NO. 14480



LOT 2 MEADOWLANDS
 OWNER: ARHC AMOFLMO01, L.L.C
 DEED RECORDED IN BOOK 6229 PAGE 1371

LOT 4 MEADOWLANDS
 OWNER: ARHC AMOFLMO02, L.L.C
 DEED RECORDED IN BOOK 6229 PAGE 367

OVER EXCAVATION NOTE

OVER EXCAVATE DETENTION BASIN BY 5 FEET. REMOVE CUT AND REPLACE WITH TOPSOIL IN LIFTS LESS THAN 8 INCHES. COMPACT ACCORDING TO GEOTECH REPORT. CUT FROM BASIN TO BE DEPOSITED WITH OTHER CUT GENERATED FROM THE SITE.

- ① REVISION NOTE:
 1. MINOR GRADING REVISIONS AROUND BUILDINGS.

- ② REVISED GRADING TO RAISE SITE.

PLANNING & ZONING #20-002498 APPROVED MAY 7, 2020

X:\CURRENTDRAWINGS\14480\14480 SITE PLAN.DWG 11/24/2020