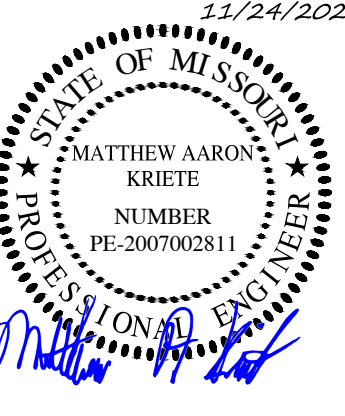
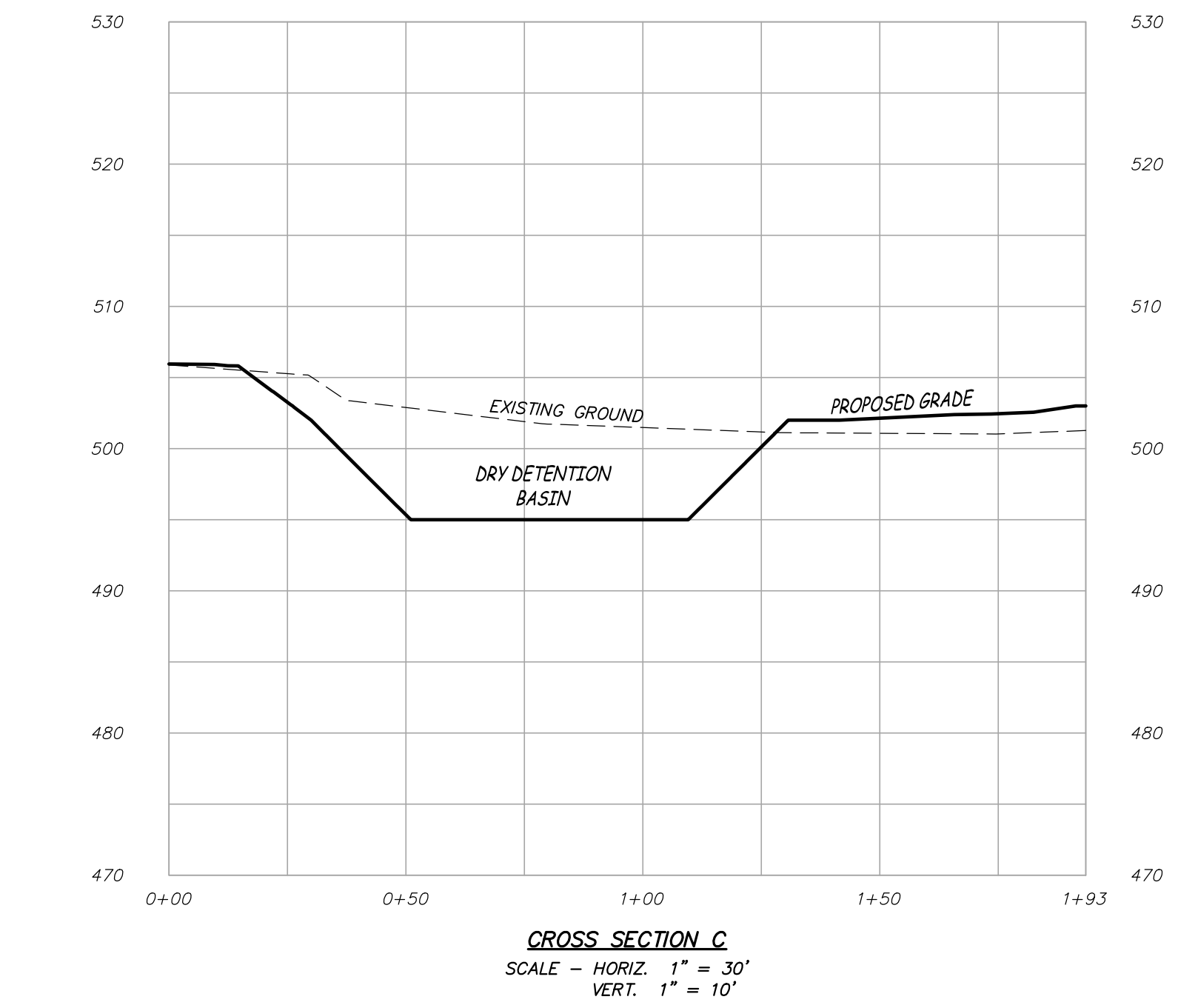
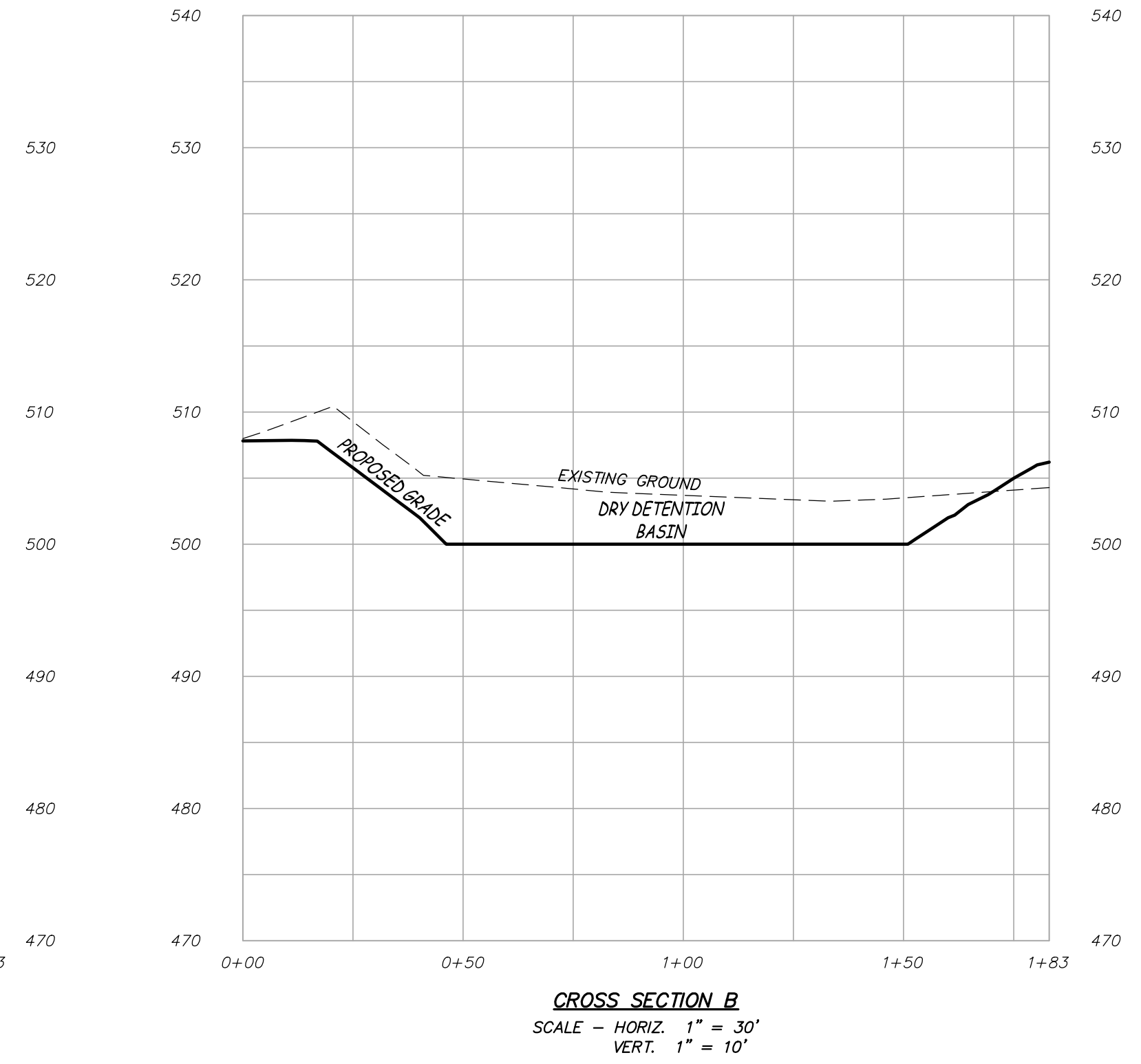
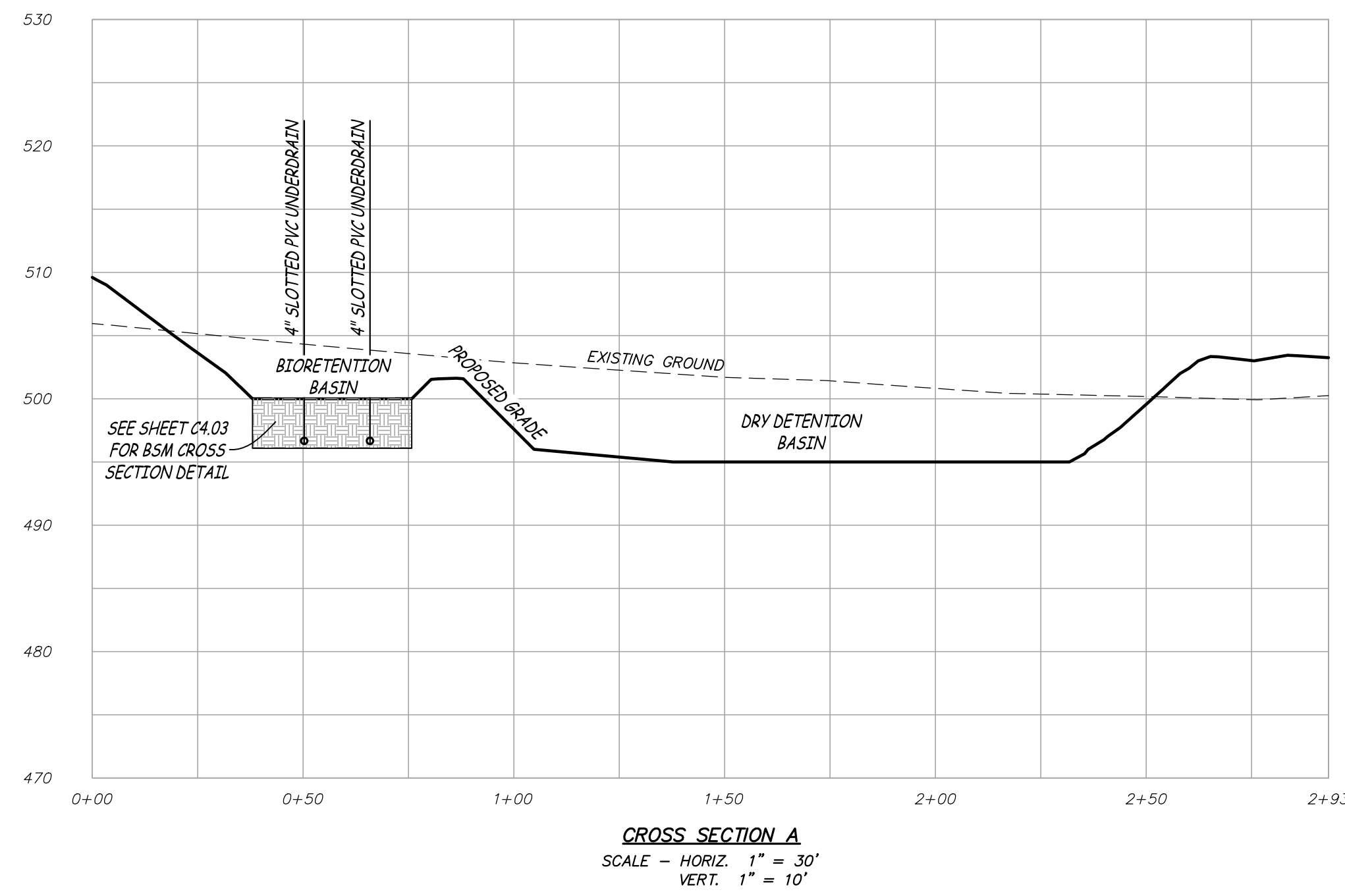
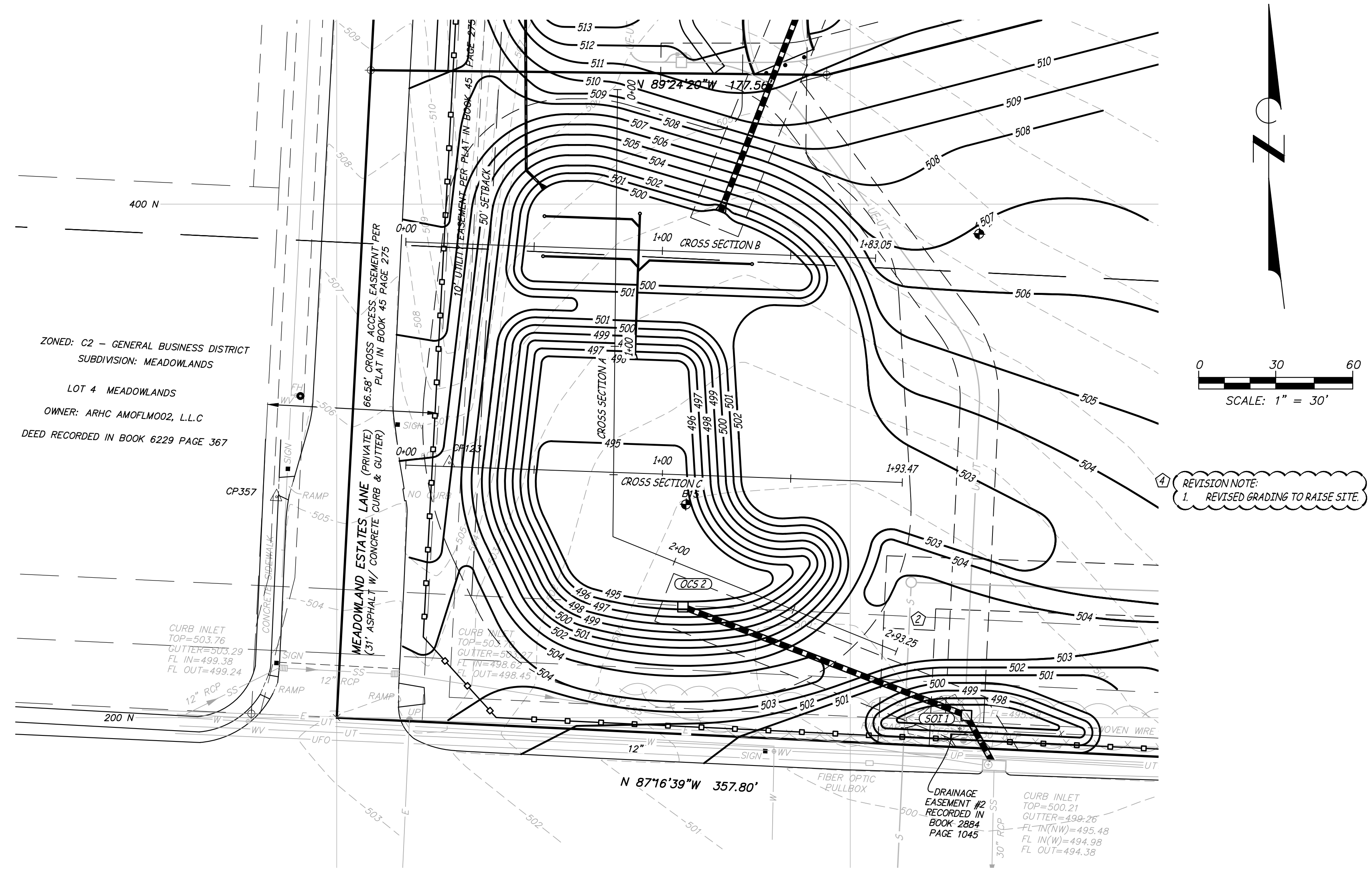


Engineering Surveys & Services
 Consulting Engineers, Land Surveyors, and Geoprosessionals
 Analytical and Material Laboratories
 1113 Ivy Street, Columbia, Missouri 65201
 573-449-2646 | www.ess-mo.com
 Other Offices:
 Jefferson City - Sedalia - Wildwood
 Missouri Engineering Corporation #200400018

MEADOWOOD ESTATES - PHASE I
 LOT 1 - MEADOWOOD ESTATES SUBDIVISION
 OF FALLON, ST. CHARLES COUNTY, MISSOURI



MATTHEW A. KRIETE
 PROFESSIONAL ENGINEER
 PE-200700281

IF ORIGINAL SIGNATURE OR DIGITAL AUTHENTICATION IS NOT PRESENT THIS MEDIA SHOULD NOT BE CONSIDERED A CERTIFIED DOCUMENT.

Date
MAY 22, 2020

| | |
|---------|----------------------------------|
| Revised | |
| ② | AUGUST 17, 2020 CITY COMMENTS |
| ④ | NOVEMBER 24, 2020 ESI #4 |
| | |
| | |

Design: KAH Draw: MJS

DETENTION CROSS SECTIONS

Sheet
C3.03

X:\CURRENTDRAWINGS\14480\14480 SITE PLAN.DWG 11/24/2020