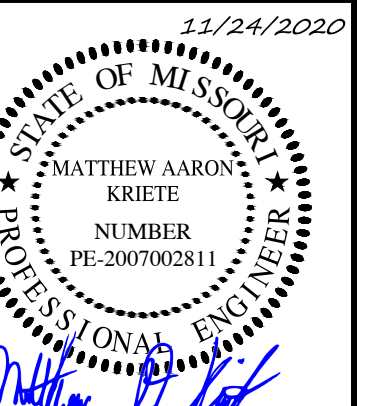


Engineering Surveys & Services
 Consulting Engineers, Land Surveyors, and Geoprosessionals
 Analytical and Material Laboratories
 1113 Ivy Street, Columbia, Missouri 65201
 573-449-2646 | www.ess-mo.com
 Other Offices:
 Jefferson City - Sedalia - Wildwood
 Missouri Engineering Corporation #200400018

MEADOWWOOD ESTATES - PHASE I
 LOT 1 - MEADOWWOOD ESTATES SUBDIVISION
 OF FALLON, ST. CHARLES COUNTY, MISSOURI



11/24/2020
 MATTHEW A. KRIETE
 PROFESSIONAL ENGINEER
 NUMBER PE-200700281

IF ORIGINAL SIGNATURE OR DIGITAL AUTHENTICATION IS NOT PRESENT THIS MEDIA SHOULD NOT BE CONSIDERED A CERTIFIED DOCUMENT

Date
MAY 22, 2020

Revised
 ① JULY 14, 2020
 CITY COMMENTS
 ② NOVEMBER 24, 2020
 ESI #4

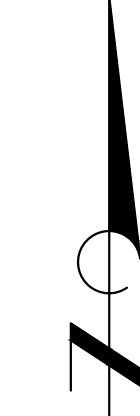
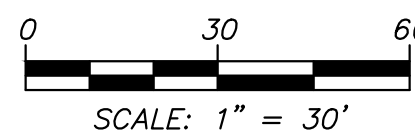
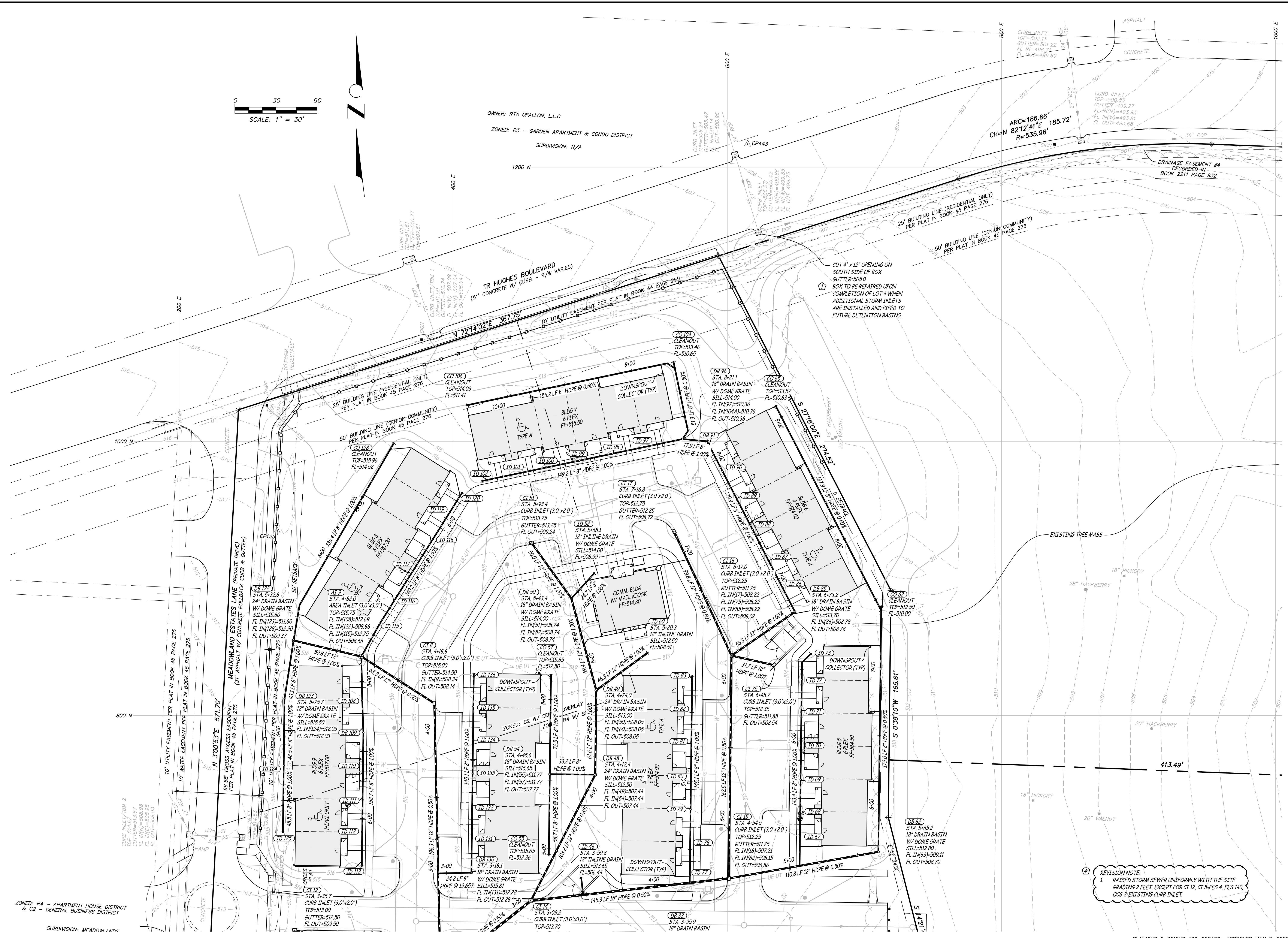
Design: KAH Draw: MJS

STORM SEWER PLAN

Sheet

C4.01

ES&S PROJECT NO. 14480



OWNER: RTA OF FALLON, L.L.C.
 ZONED: R3 - GARDEN APARTMENT & CONDO DISTRICT
 SUBDIVISION: N/A

REVISION NOTE:
 1. RAISED STORM SEWER UNIFORMLY WITH THE SITE GRADING 2 FEET, EXCEPT FOR CT.12, CT.5-FES 4, FES 140, OCS 2-EXISTING CURB INLET.

ZONED: R4 - APARTMENT HOUSE DISTRICT
 & C2 - GENERAL BUSINESS DISTRICT
 SUBDIVISION: MFAD/PA/AMDC