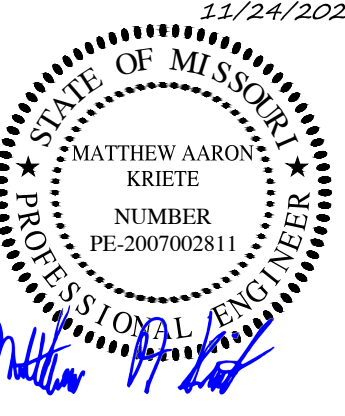


Engineering Surveys & Services
 Consulting Engineers, Land Surveyors, and Geoprosessionals
 Analytical and Material Laboratories
 1113 E. Street, Columbia, Missouri 65201
 573-449-2646 | www.es-inc.com

Other Offices:
 Jefferson City - Sedalia - Wildwood
 Missouri Engineering Corporation #20400018

MEADOWOOD ESTATES - PHASE I
 LOT 1 - MEADOWOOD ESTATES SUBDIVISION
 OF ALLON, ST. CHARLES COUNTY, MISSOURI



MATTHEW A. KRIETE
 PROFESSIONAL ENGINEER
 PE-2007002811

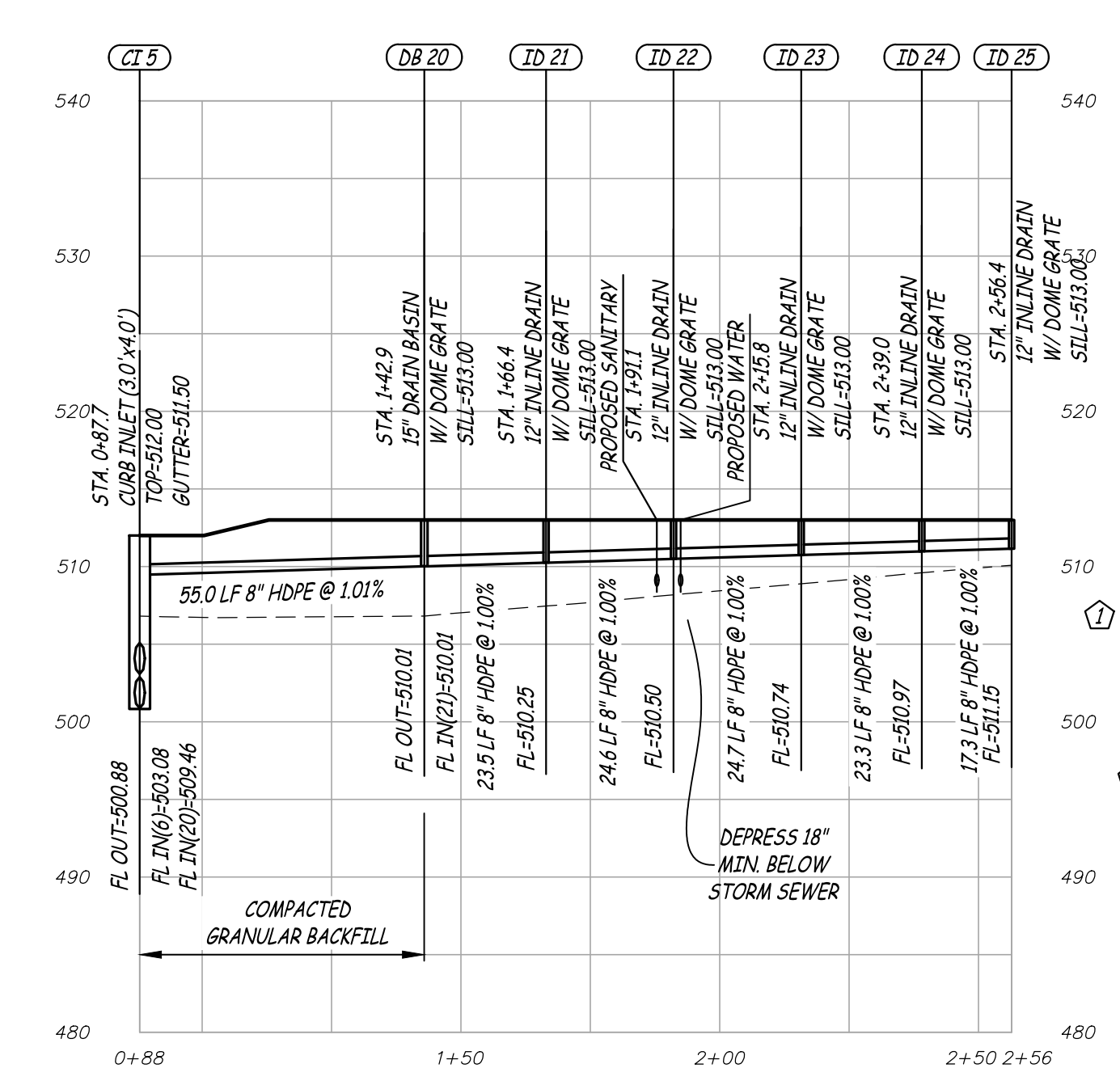
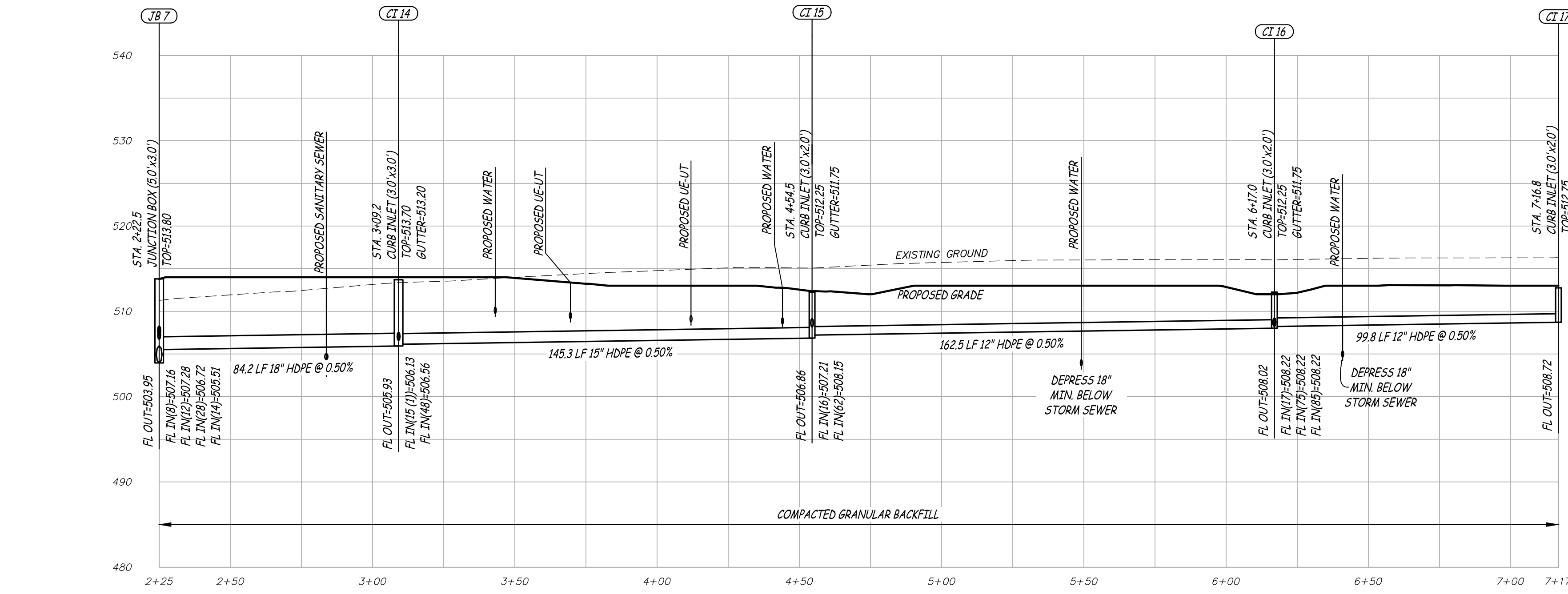
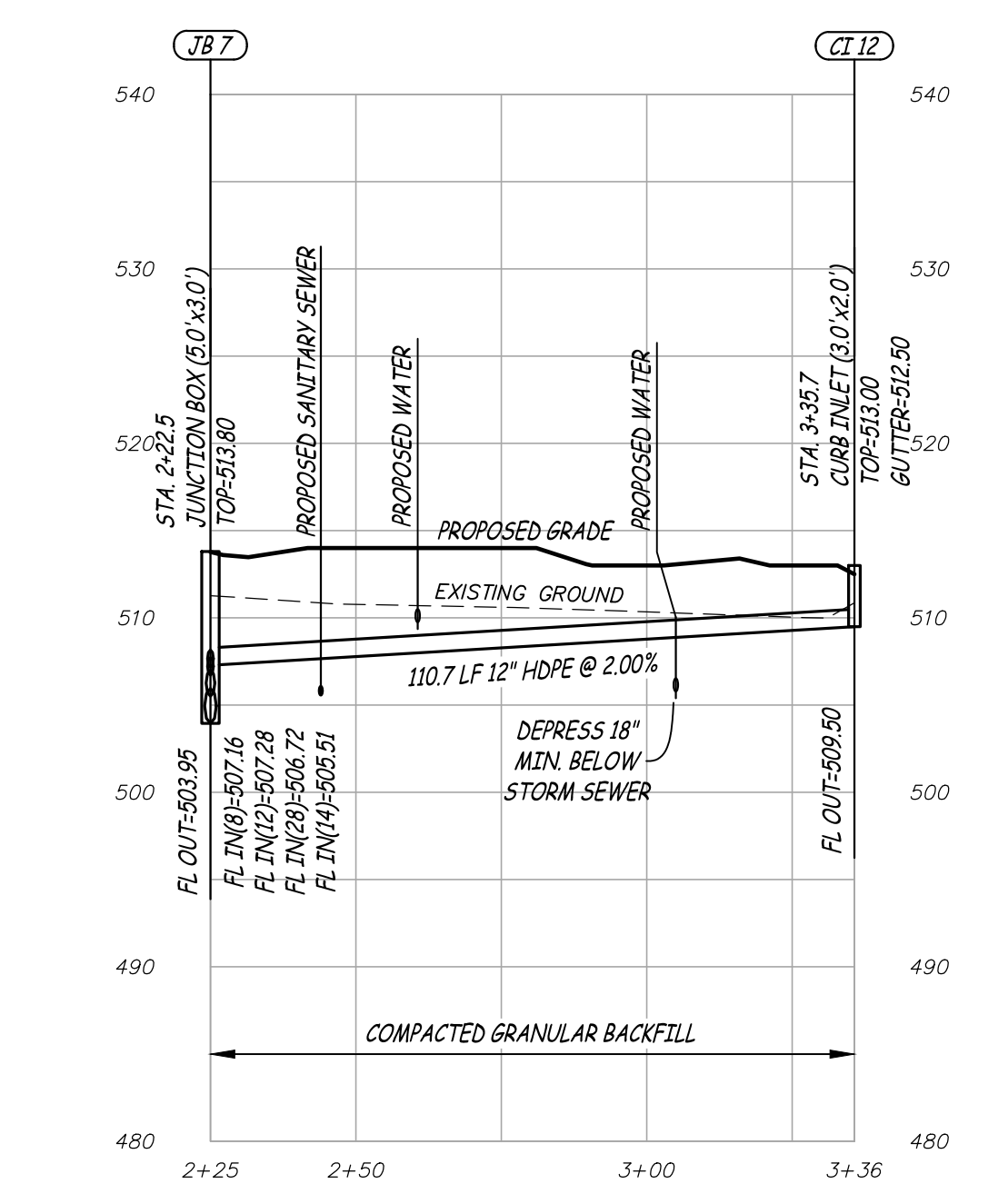
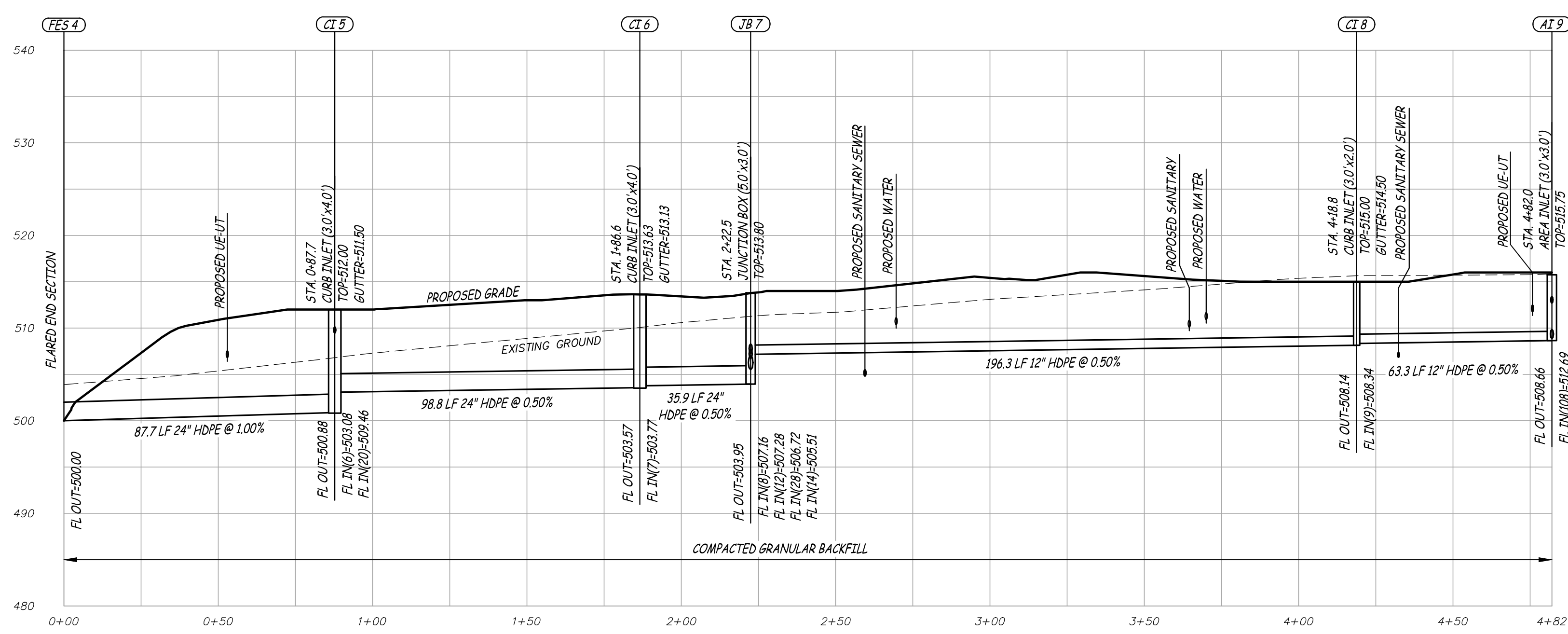
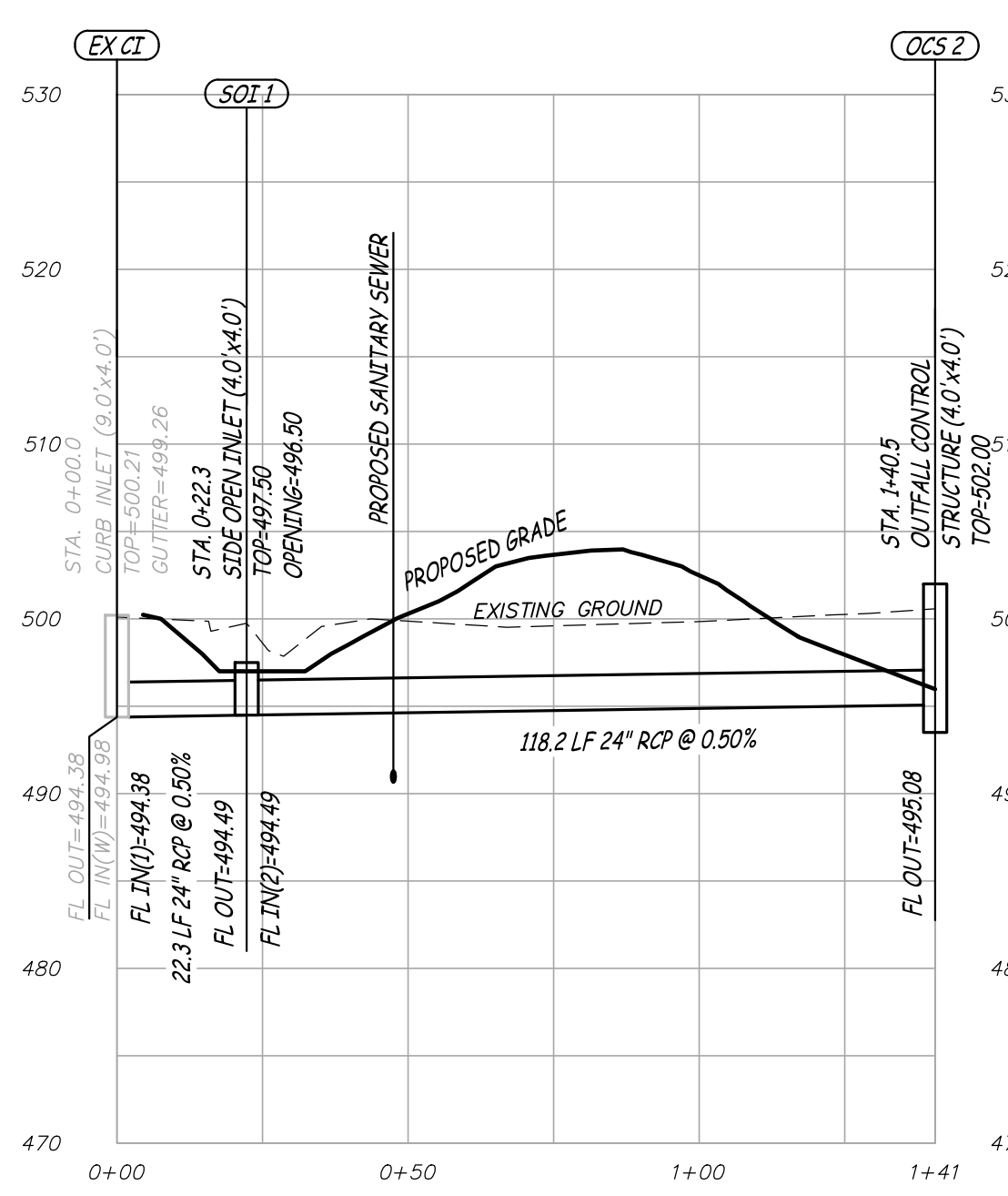
Date
MAY 22, 2020

Revised
 JULY 14, 2020
 CITY COMMENTS
 NOVEMBER 24, 2020
 ESI #4

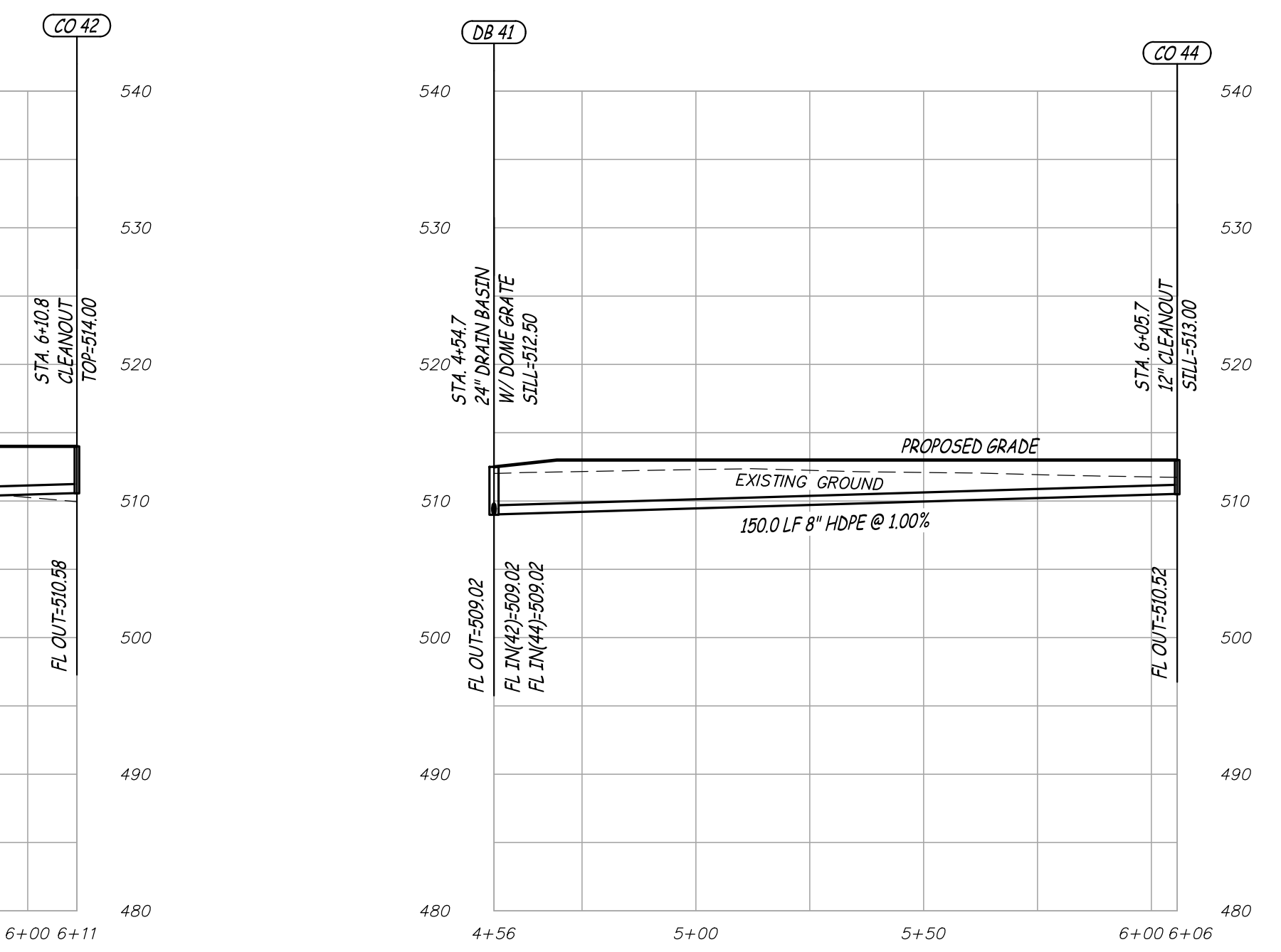
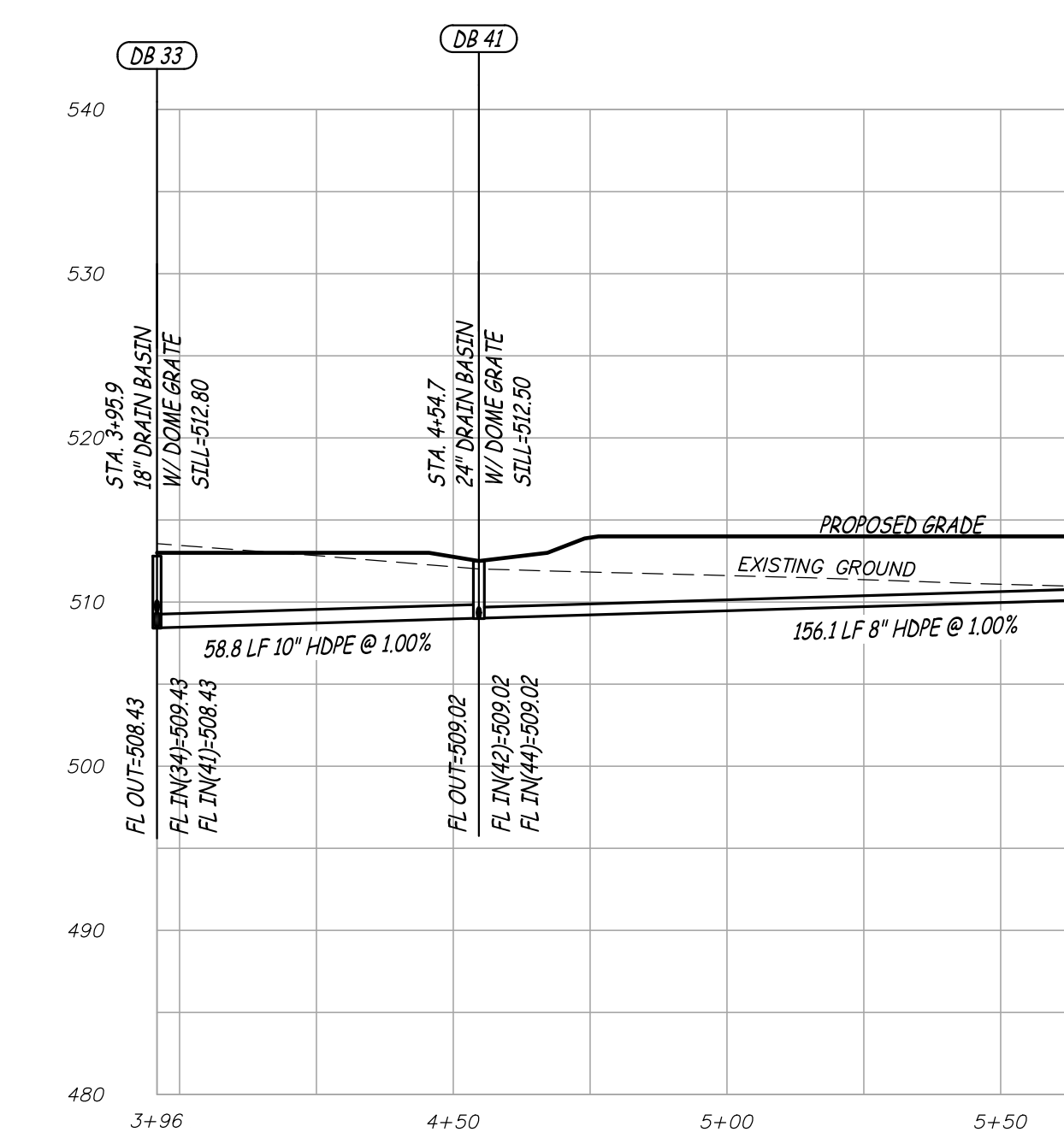
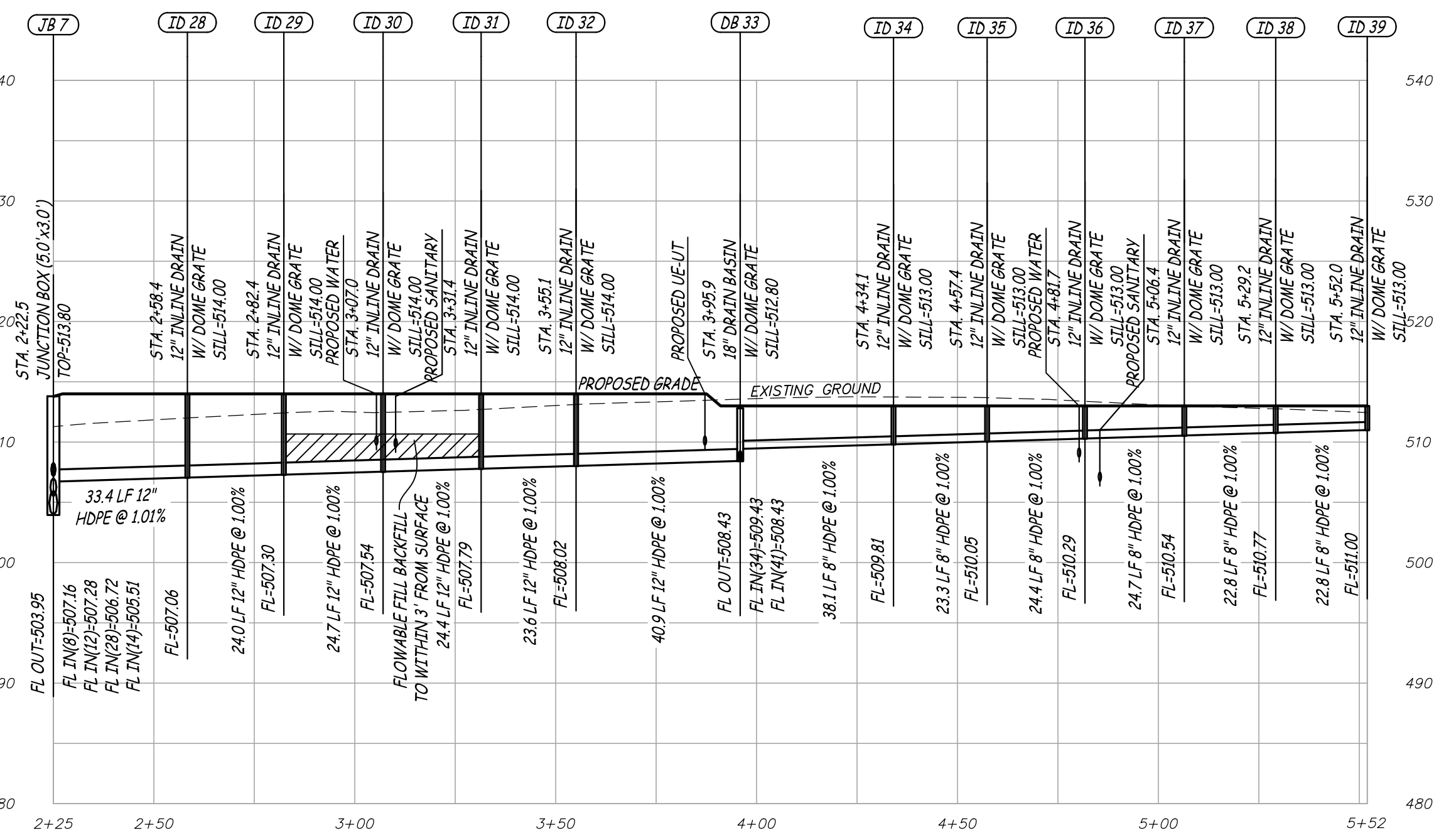
Design: KAH Draw: MJS

Sheet
C5.01

ES&S PROJECT NO. 14480



- NOTES:
- ALL TRENCHES WHERE UTILITY LINES CROSS MUST BE FILLED WITH COMPACTED GRANULAR FILL BETWEEN THE TWO PIPES.
 - ALL TRENCH FILL UNDER PAVED AREAS OR ROADWAY AREAS SHALL BE COMPACTED GRANULAR FILL.
 - USE COMPACTED ROCK GRANULAR BACKFILL ON ALL STORM AND SANITARY SEWERS WITHIN 10 FEET OF THE EDGE OF PAVEMENT AND THAT LIE WITHIN THE 1:1 SHEAR PLANE OF THE ROAD.
- REVISION NOTE:
- RAISED STORM SEWER UNIFORMLY WITH THE SITE GRADING 2 FEET, EXCEPT FOR CI 12, CI 5-FES 4, FES 140, OCS 2-EXISTING CURB INLET.



X:\CURRENT\DRAWINGS\ES\14480 SITE PLAN.DWG 11/24/2020