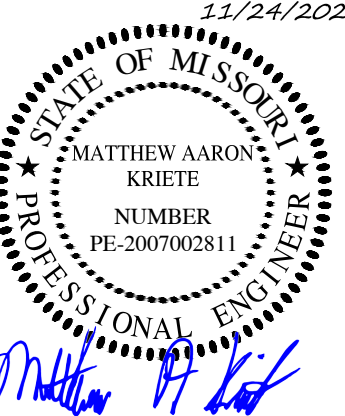


**Engineering Surveys & Services**  
 Consulting Engineers, Land Surveyors, and Geoprosessionals  
 Analytical and Material Laboratories  
 1113 Ely Street, Columbia, Missouri 65201  
 573-449-2646 | www.ess-inc.com  
 Other Offices:  
 Jefferson City - Sedalia - Wildwood  
 Missouri Engineering Corporation # 200400018

**MEADOWOOD ESTATES - PHASE I**  
 LOT 1 - MEADOWOOD ESTATES SUBDIVISION  
 OF FALLON, ST. CHARLES COUNTY, MISSOURI



MATTHEW A. KRIETE  
 PROFESSIONAL ENGINEER  
 PE-200700281

IF ORIGINAL SIGNATURE OR DIGITAL AUTHENTICATION IS NOT PRESENT THIS MEDIA SHOULD NOT BE CONSIDERED A CERTIFIED DOCUMENT

Date  
**MAY 22, 2020**

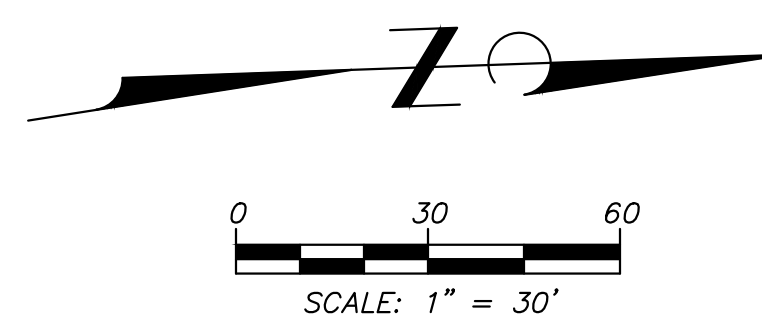
Revised	
①	JULY 14, 2020 CITY COMMENTS
②	AUGUST 17, 2020 CITY COMMENTS
④	NOVEMBER 24, 2020 ESI #4

Design: KAH Drawn: MJS  
**SANITARY SEWER PLAN & PROFILE**

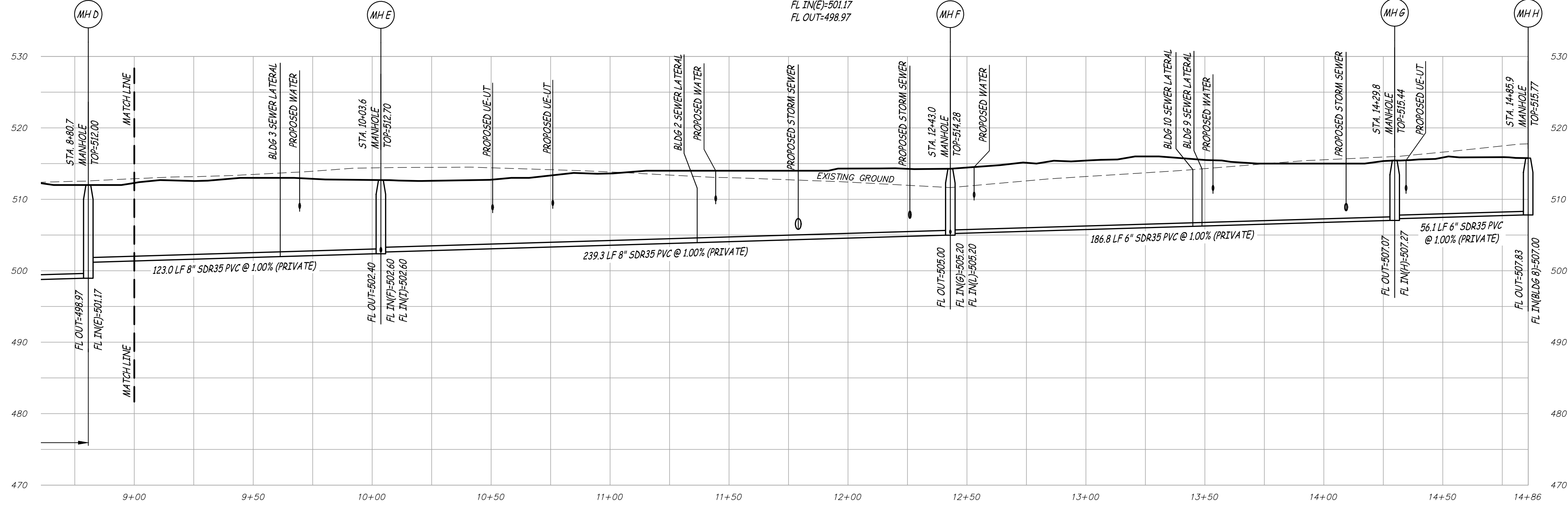
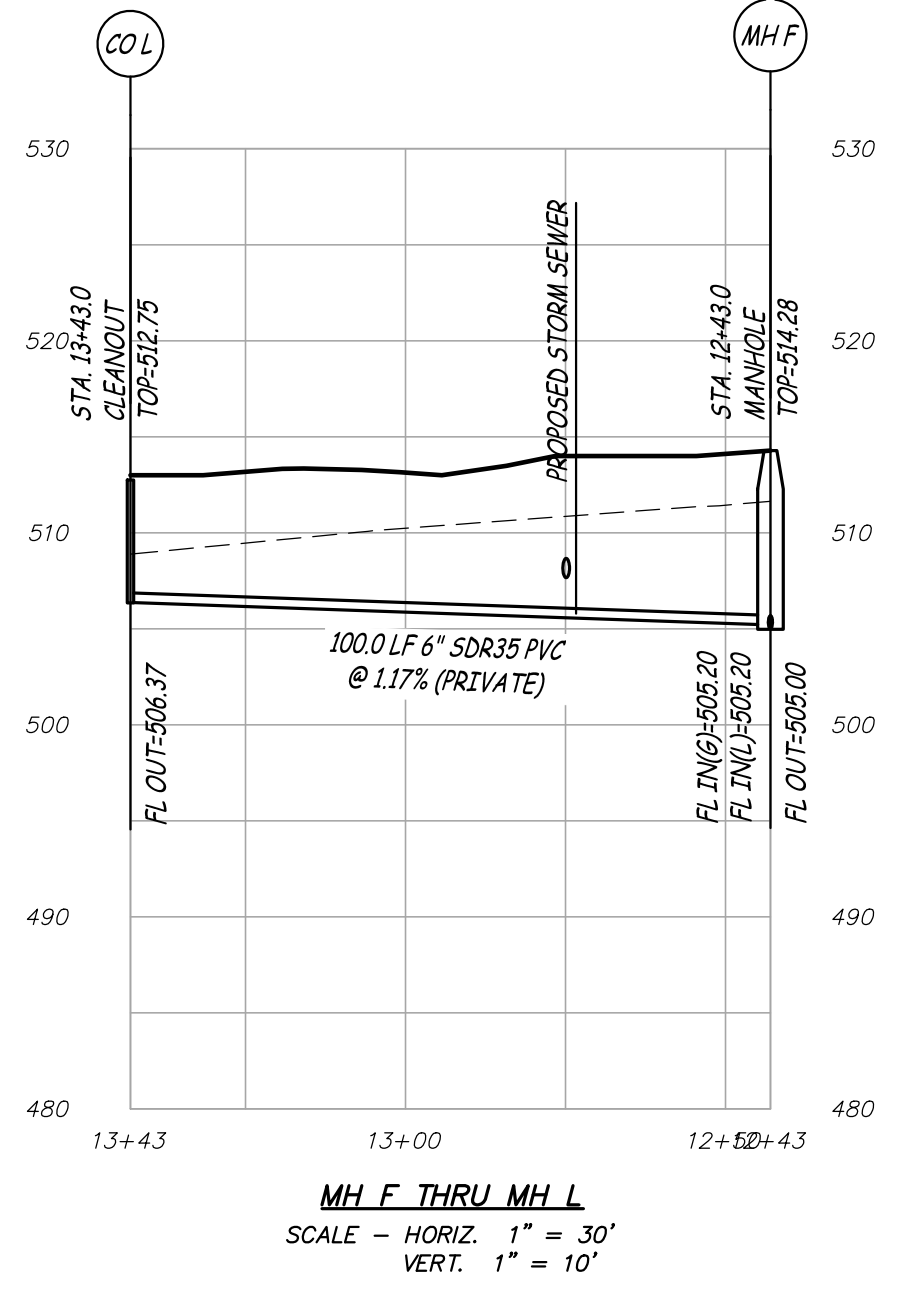
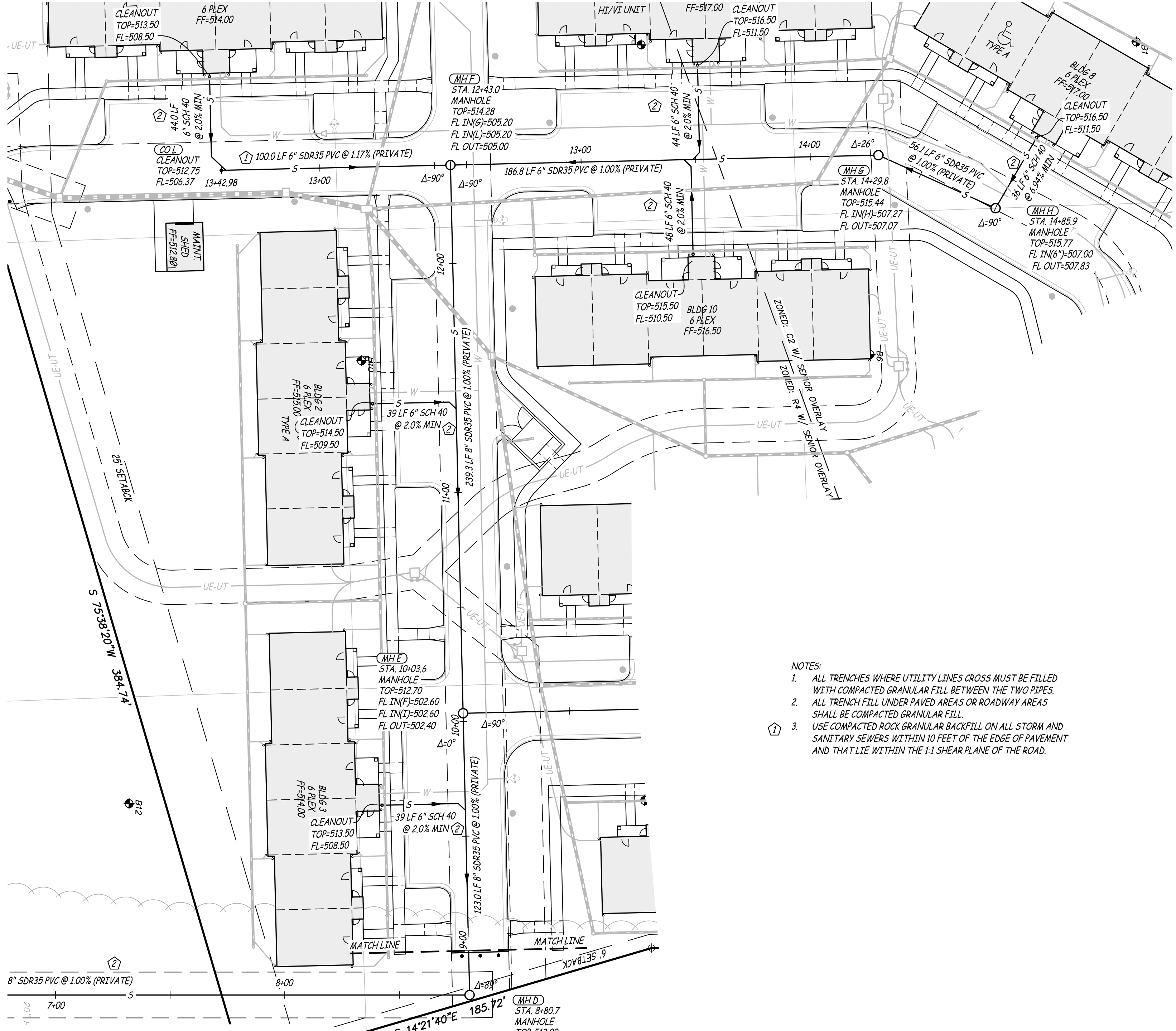
Sheet

**C7.02**

ES&S PROJECT NO. 14480



REVISION NOTE:  
 1. RAISED PRIVATE SANITARY SEWER WITH SITE GRADING.



X:\CURRENT\DRAWINGS\14480\14480 SITE PLAN.DWG 11/24/2020