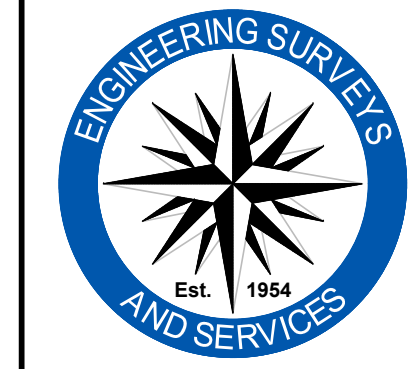


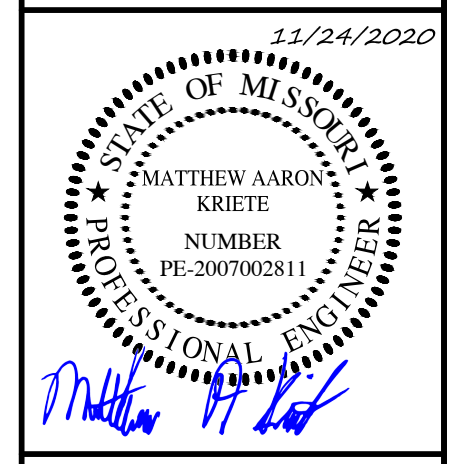
X:\CURRENTDRAWINGS\ME3\514480\14480 SITE PLAN.DWG 11/24/2020

REVISION NOTE:  
1. ADDED CONCRETE SIDEWALK SLOPE PERCENTAGES.  
2. REVISED SPOT ELEVATIONS WITH SITE GRADING.



**Engineering Surveys & Services**  
Consulting Engineers, Land Surveyors, and Geoprosessionals  
Analytical and Material Laboratories  
1113 Ivy Street, Columbia, Missouri 65201  
573-449-2646 | www.ess-inc.com  
Other Offices:  
Jefferson City - Sedalia - Wildwood  
Missouri Engineering Corporation # 200400018

**MEADOWOOD ESTATES - PHASE I**  
LOT 1 - MEADOWOOD ESTATES SUBDIVISION  
OF FALLON, ST. CHARLES COUNTY, MISSOURI



MATTHEW A. KRIETE  
PROFESSIONAL ENGINEER  
PE-2007002811

IF ORIGINAL SIGNATURE OR DIGITAL AUTHENTICATION IS NOT PRESENT THIS MEDIA SHOULD NOT BE CONSIDERED A CERTIFIED DOCUMENT.

Date  
**MAY 22, 2020**

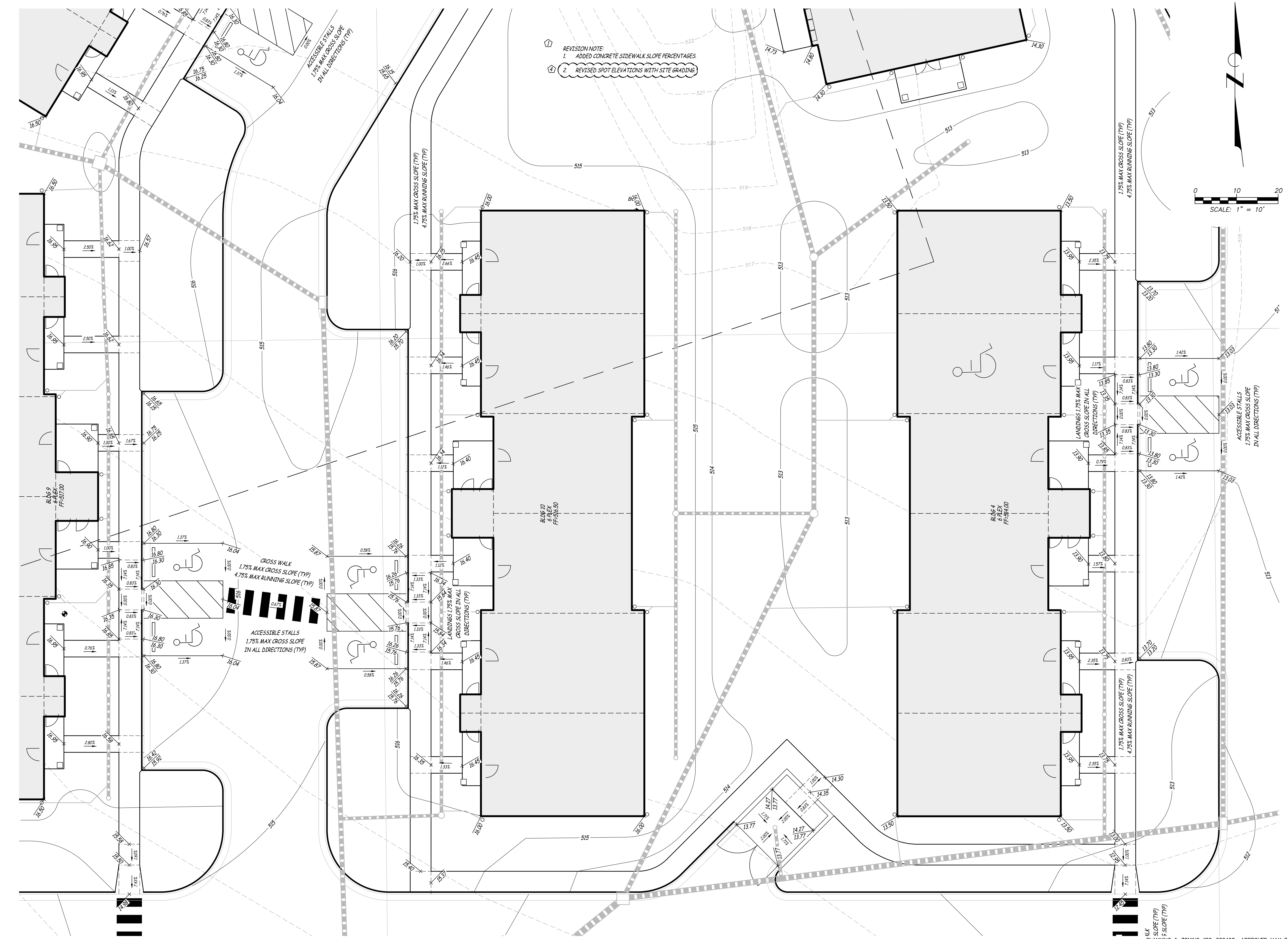
Revised
1 JULY 14, 2020
CITY COMMENTS
2 NOVEMBER 24, 2020
ESJ #4

Design: KAH Draw: MJS

**ACCESSIBILITY PLAN**

Sheet  
**C8.03**

ES&S PROJECT NO. 14480



1/4" SLOPE (TYP)  
5" SLOPE (TYP)  
PLANNING & ZONING #20-002498 APPROVED MAY 7, 2020