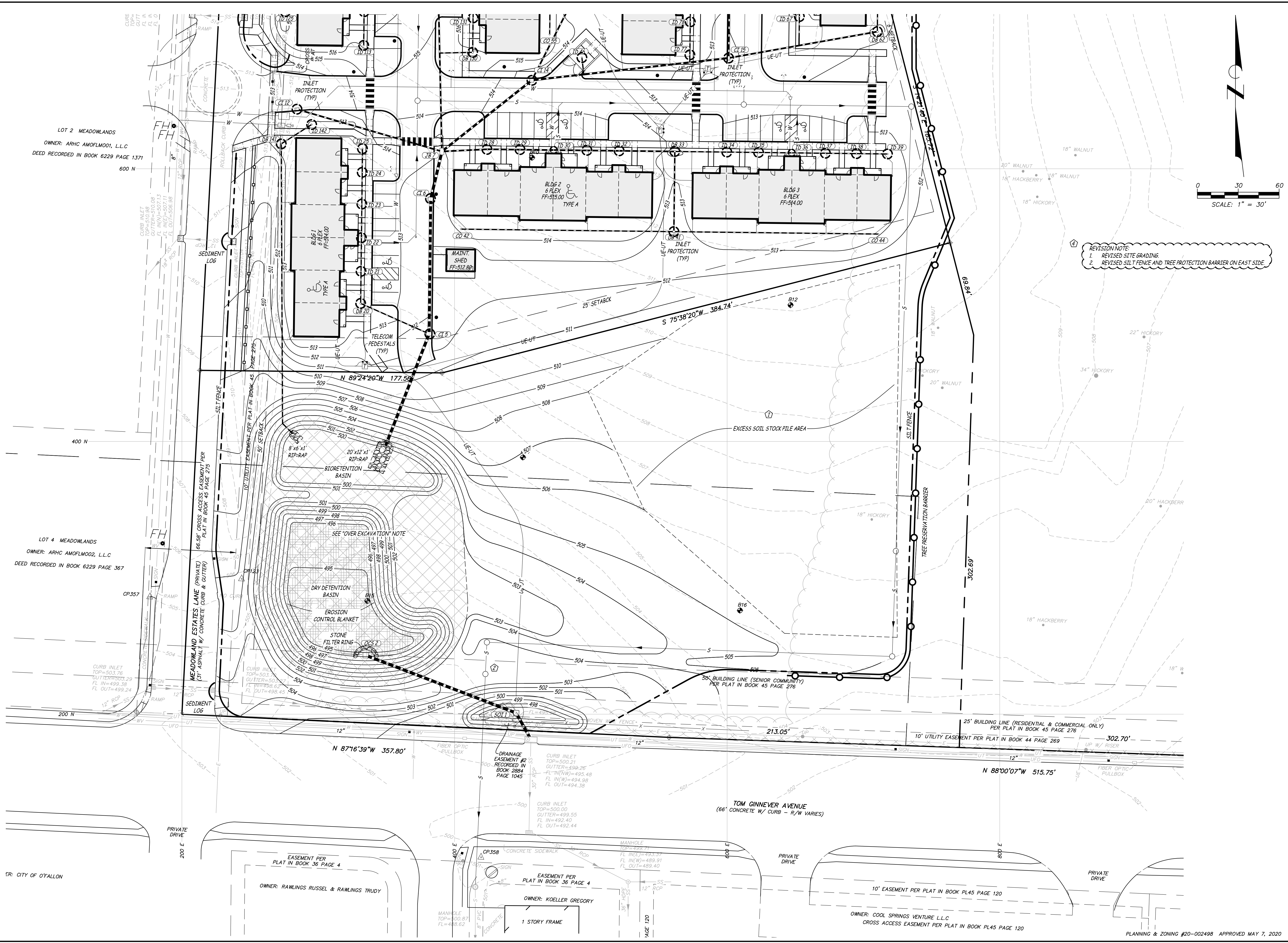
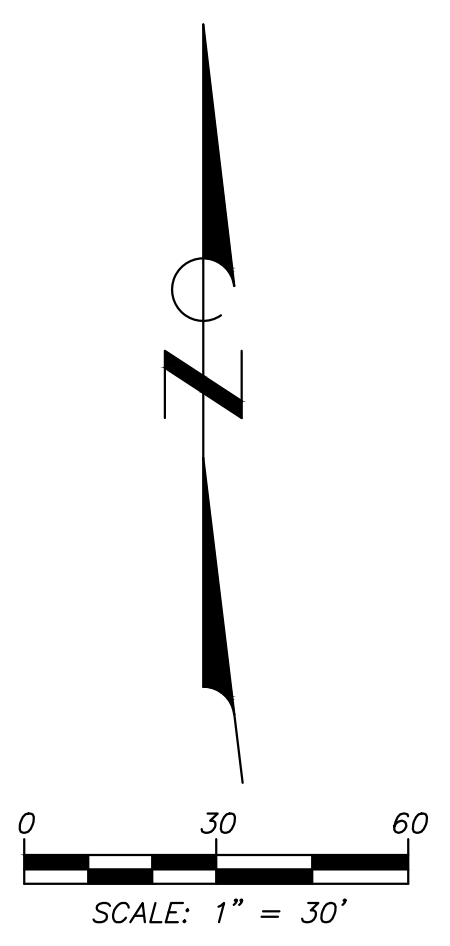
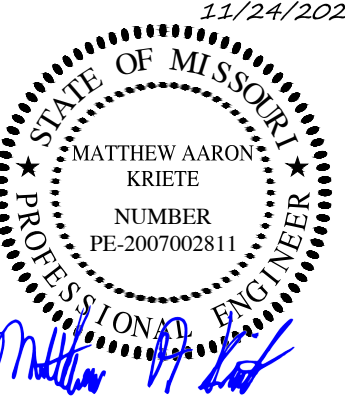


Engineering Surveys & Services
 Consulting Engineers, Land Surveyors, and Geoprosessionals
 Analytical and Material Laboratories
 1113 Ely Street, Columbia, Missouri 65201
 573-449-2646 | www.ess-mo.com
 Other Offices:
 Jefferson City - Sedalia - Wildwood
 Missouri Engineering Corporation #200400018



REVISION NOTE
 1. REVISED SITE GRADING
 2. REVISED SILT FENCE AND TREE PROTECTION BARRIER ON EAST SIDE

MEADOWWOOD ESTATES
 LOT 1 - MEADOWWOOD ESTATES SUBDIVISION
 OFALLON, ST. CHARLES COUNTY, MISSOURI



MATTHEW A. KRIETE
 PROFESSIONAL ENGINEER
 PE-2007002811

IF ORIGINAL SIGNATURE OR DIGITAL AUTHENTICATION IS NOT PRESENT THIS MEDIA SHOULD NOT BE CONSIDERED A CERTIFIED DOCUMENT

Date
MAY 22, 2020

- Revised
- ① JULY 14, 2020
CITY COMMENTS
 - ② AUGUST 17, 2020
CITY COMMENTS
 - ④ NOVEMBER 24, 2020
ESI #4

Design: KAH Drawn: MJS

FINAL EROSION CONTROL PLAN
 Sheet
C9.04

ES&S PROJECT NO. 14481