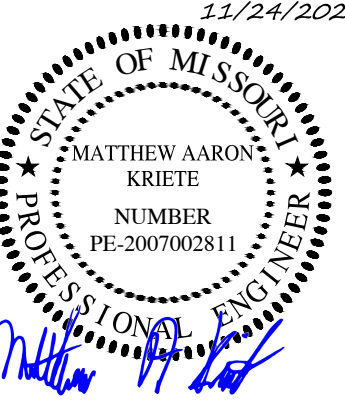


Engineering Surveys & Services
 Consulting Engineers, Land Surveyors, and Geoprosessionals
 Analytical and Material Laboratories
 1113 Ivy Street, Columbia, Missouri 65201
 573-449-2646 | www.ess-mo.com
 Other Offices:
 Jefferson City - Sedalia - Wildwood
 Missouri Engineering Corporation # 200400018

MEADOWOOD ESTATES - PHASE I
 LOT 1 - MEADOWOOD ESTATES SUBDIVISION
 O'FALLON, ST. CHARLES COUNTY, MISSOURI



MATTHEW A. KRIETE
 PROFESSIONAL ENGINEER
 PE-200700281

IF ORIGINAL SIGNATURE OR DIGITAL AUTHENTICATION IS NOT PRESENT THIS MEDIA SHOULD NOT BE CONSIDERED A CERTIFIED DOCUMENT.

Date
MAY 22, 2020

Revised
① JULY 14, 2020 CITY COMMENTS
② NOVEMBER 2, 2020 ESI #3
④ NOVEMBER 24, 2020 ESI #4

Design: KH Draw: MJS

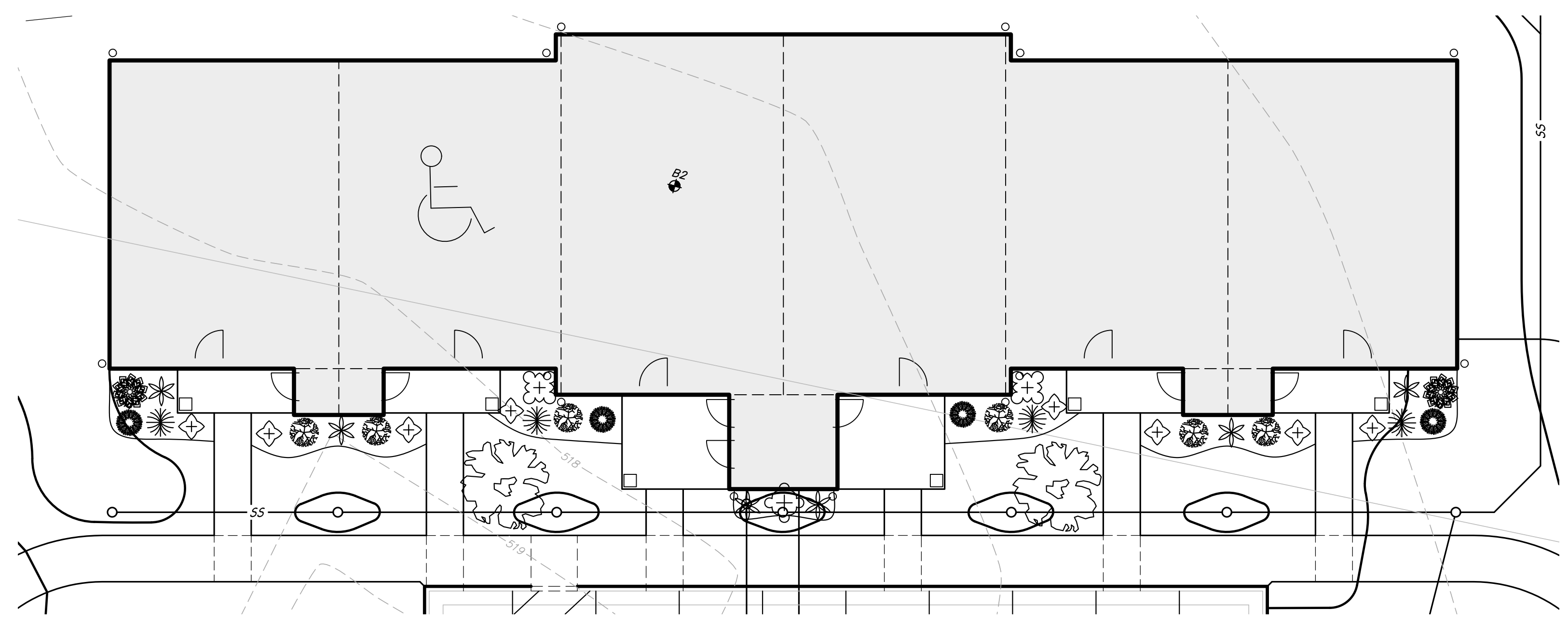
LANDSCAPE PLAN

Sheet

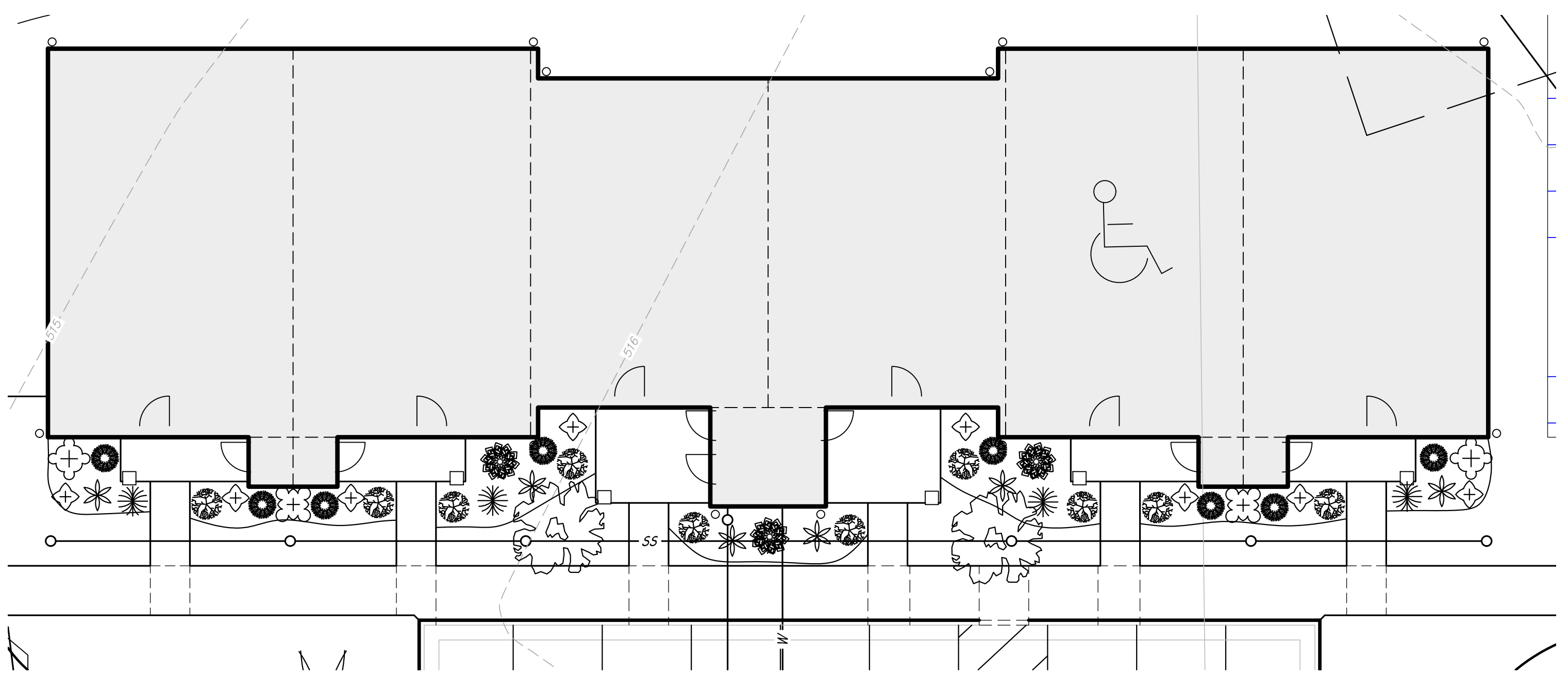
L1.03

ES&S PROJECT NO. 14481

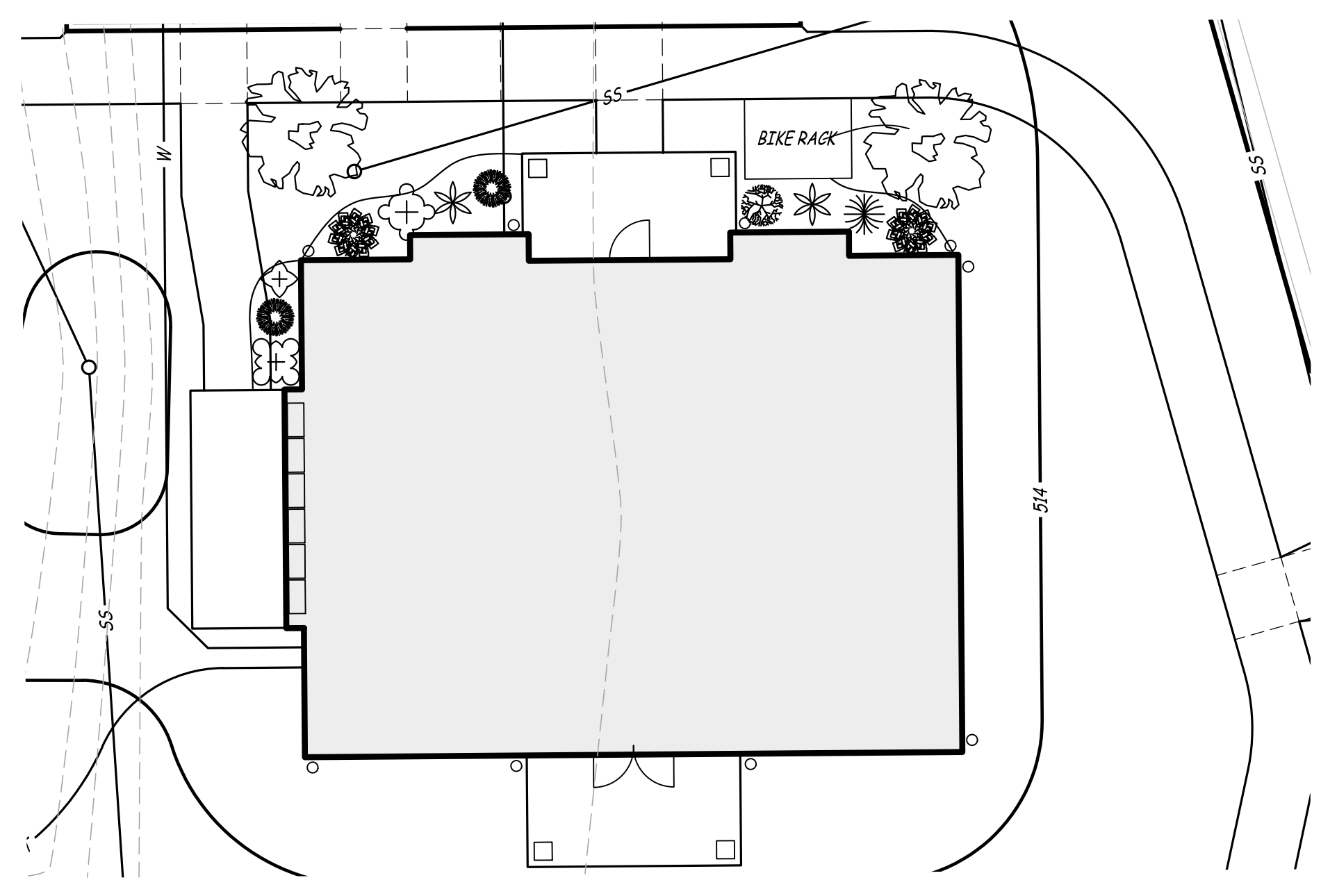
LANDSCAPE LEGEND		
SYMBOL	DESCRIPTION	QUANTITY
	ORNAMENTAL DECIDUOUS TREE (1.5-2" CALIPER)	SEE SHEET L1.01-L1.02
	NEW JERSEY TEA	24
	INKBERRY HOLLY	50
	BUTTON BUSH	21
	WINTERBERRY 'JIM DANDY'	13
	WINTERBERRY 'RED SPRITE'	81
	HYDRANGEA	69
	SWEETSPIRE	41
	LITTLE GIANT DWARF ARBORVITAE	62



6 PLEX TYPE A DETAIL
 SCALE: 1" = 10'



6 PLEX TYPE B DETAIL
 SCALE: 1" = 10'



COMMUNITY BUILDING DETAIL
 SCALE: 1" = 10'

REVISION NOTE:
 1. REVISED PLANTING BED LANDSCAPING.

X:\CURRENTDRAWINGS\ES\14481\LANDSCAPE\PLAN\DWG 11/24/2020