

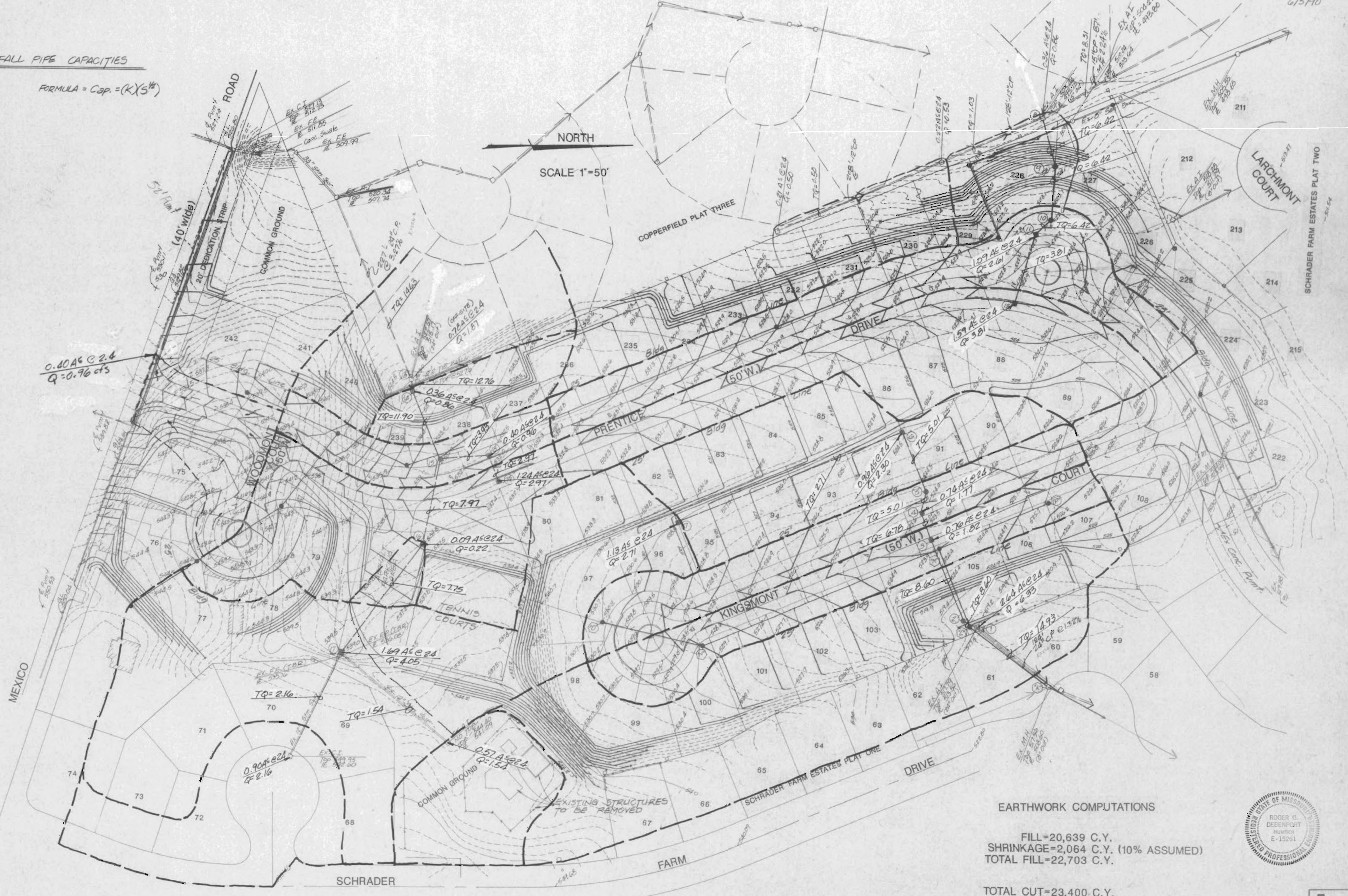
CHECK OUTFALL PIPE CAPACITIES

AI 1
PIPE SIZE = 24"
S = 1% (Assumed)
K = 226.2
Cap = (226.2)(0.01)^{1/2}
Cap = 22.62 cfs
Q per plan = 14.93 cfs

FORMULA = Cap = (K)(S)^{1/2}

AI 8
PIPE SIZE = 15"
S = 2.24%
K = 64.70
Cap = (64.70)(0.0224)^{1/2}
Cap = 9.68 cfs
Q per plan = 8.31 cfs

AI 13
PIPE SIZE = 24"
S = 3.27%
K = 226.2
Cap = (226.2)(0.0327)^{1/2}
Cap = 40.90 cfs
Q per plan = 14.63 cfs



EARTHWORK COMPUTATIONS
FILL=20,639 C.Y.
SHRINKAGE=2,064 C.Y. (10% ASSUMED)
TOTAL FILL=22,703 C.Y.

TOTAL CUT=23,400 C.Y.

