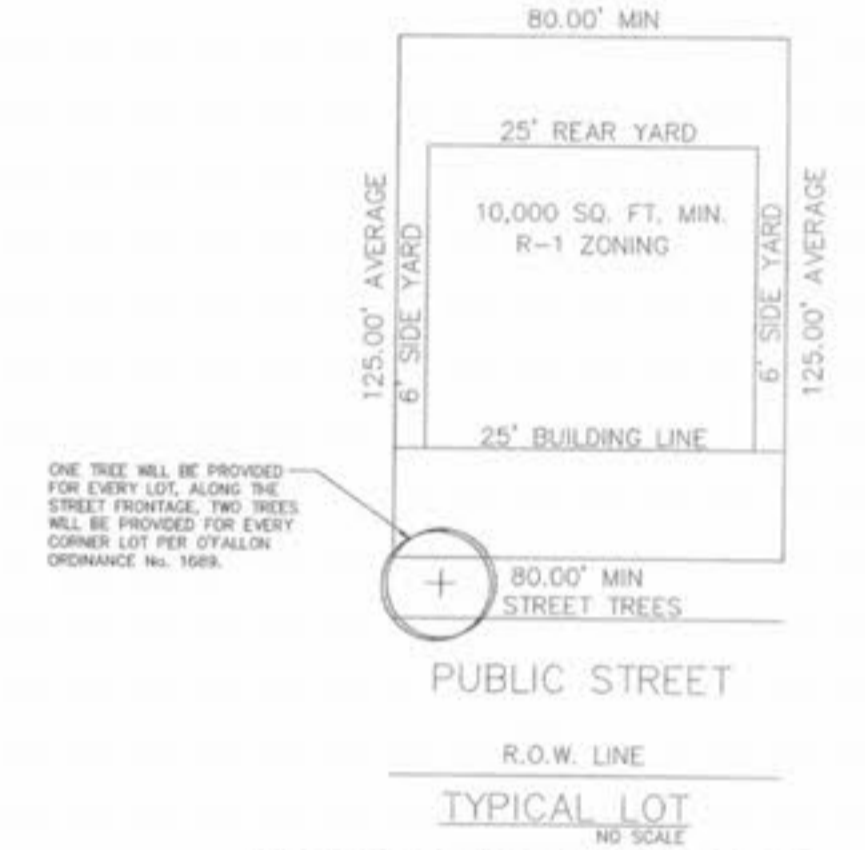
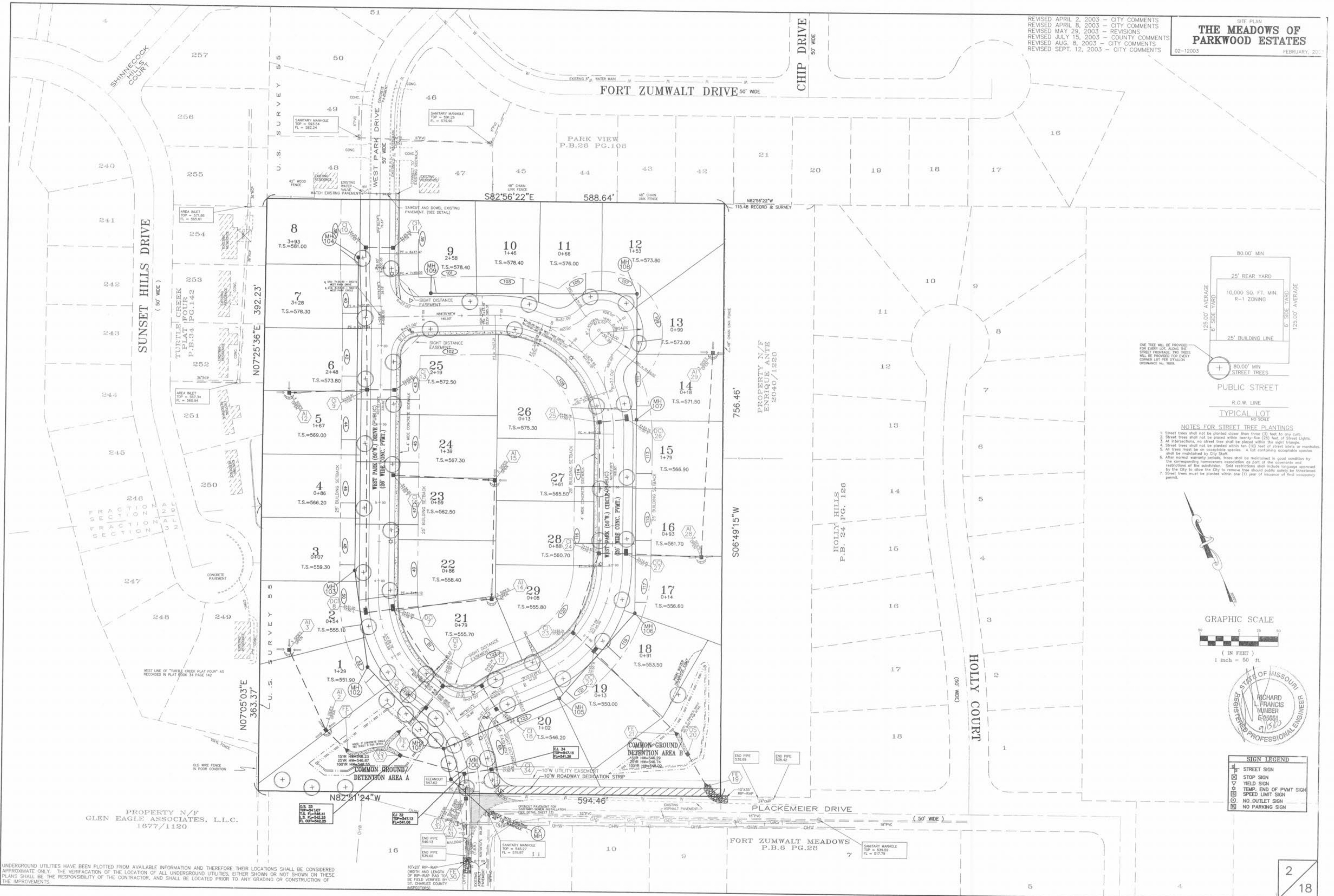
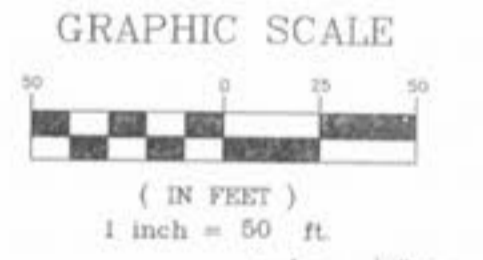


REVISED APRIL 2, 2003 - CITY COMMENTS  
 REVISED APRIL 8, 2003 - CITY COMMENTS  
 REVISED MAY 29, 2003 - REVISIONS  
 REVISED JULY 15, 2003 - COUNTY COMMENTS  
 REVISED AUG. 8, 2003 - CITY COMMENTS  
 REVISED SEPT. 12, 2003 - CITY COMMENTS

THE MEADOWS OF  
 PARKWOOD ESTATES  
 02-12003 FEBRUARY, 2003



- NOTES FOR STREET TREE PLANTINGS**
- Street trees shall not be planted closer than three (3) feet to any curb.
  - Street trees shall not be placed within twenty-five (25) feet of Street Lights.
  - At intersections, no street tree shall be placed within the sight triangle.
  - Street trees shall not be planted within ten (10) feet of street lights or manholes.
  - All trees must be on acceptable species. A list containing acceptable species shall be maintained by City Staff.
  - After normal warranty periods, trees shall be maintained in good condition by the corresponding homeowners association as part of the covenants and restrictions of the subdivision. Said restrictions shall include language approved by the City to allow the City to remove tree should public safety be threatened.
  - Street trees must be planted within one (1) year of issuance of final occupancy permit.



**SIGN LEGEND**

+	STREET SIGN
⊘	STOP SIGN
⊕	YIELD SIGN
⊖	TEMP. END OF PWMT SIGN
⊗	SPEED LIMIT SIGN
⊙	NO. OUTLET SIGN
⊚	NO PARKING SIGN

UNDERGROUND UTILITIES HAVE BEEN PLOTTED FROM AVAILABLE INFORMATION AND THEREFORE THEIR LOCATIONS SHALL BE CONSIDERED APPROXIMATE ONLY. THE VERIFICATION OF THE LOCATION OF ALL UNDERGROUND UTILITIES, EITHER SHOWN OR NOT SHOWN ON THESE PLANS SHALL BE THE RESPONSIBILITY OF THE CONTRACTOR, AND SHALL BE LOCATED PRIOR TO ANY GRADING OR CONSTRUCTION OF THE IMPROVEMENTS.