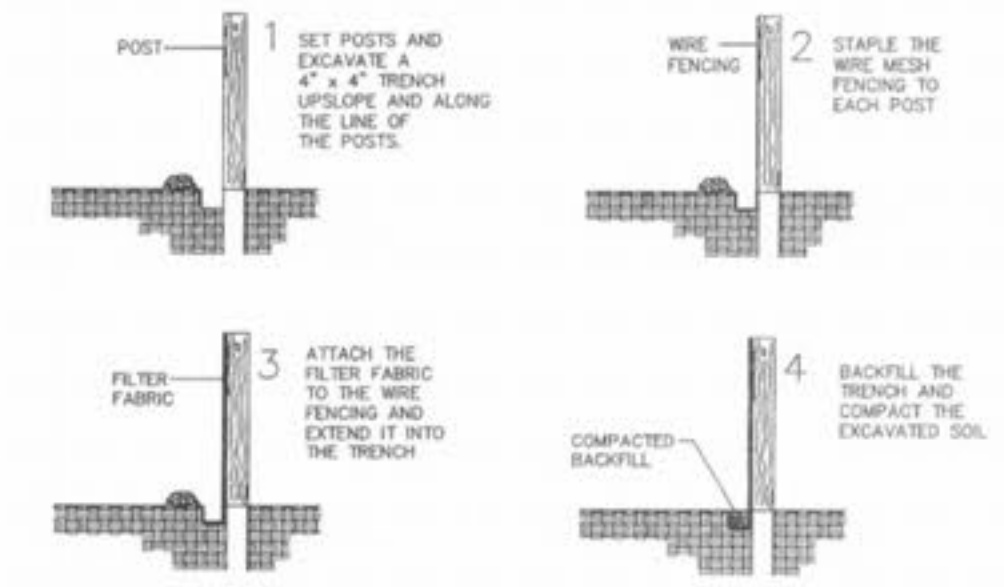
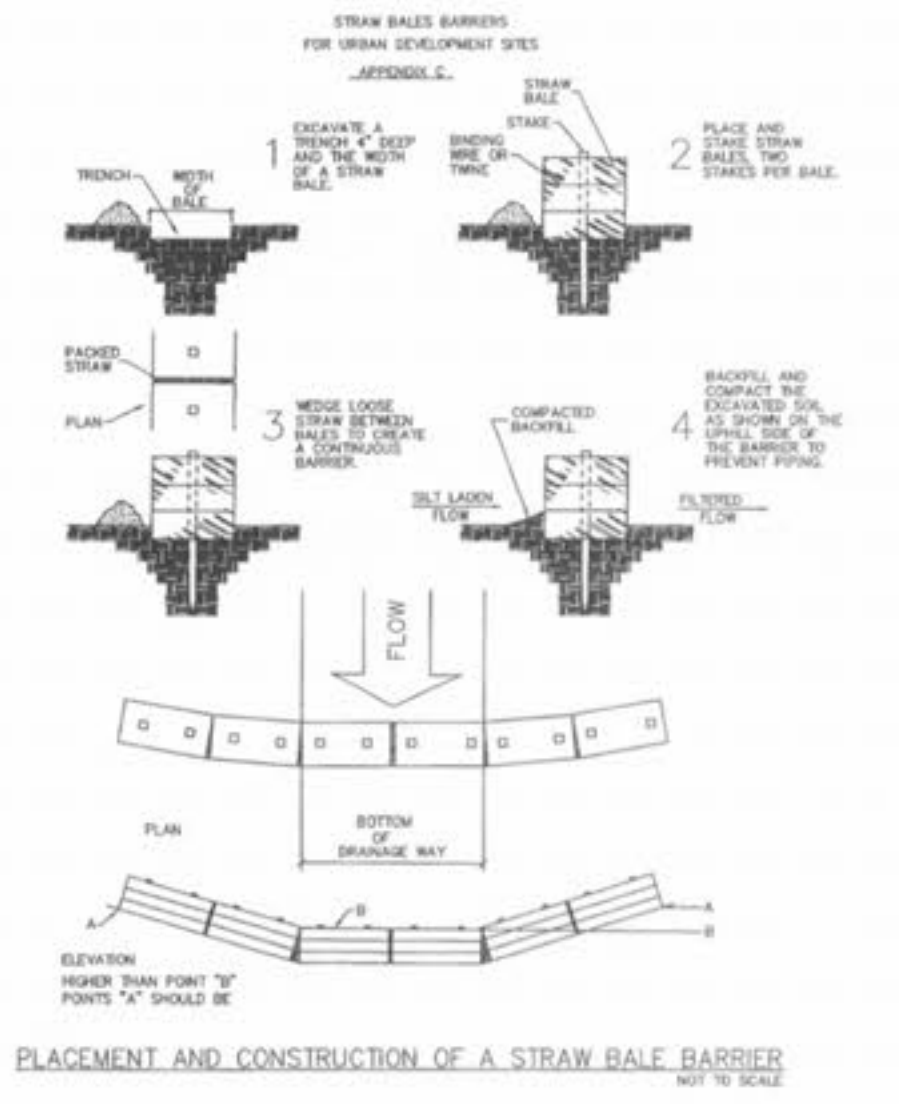
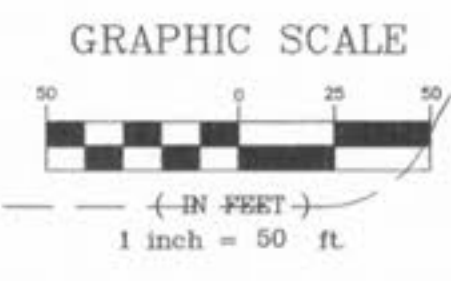


THE MEADOWS OF PARKWOOD ESTATES

02-12003 FEBRUARY, 2003

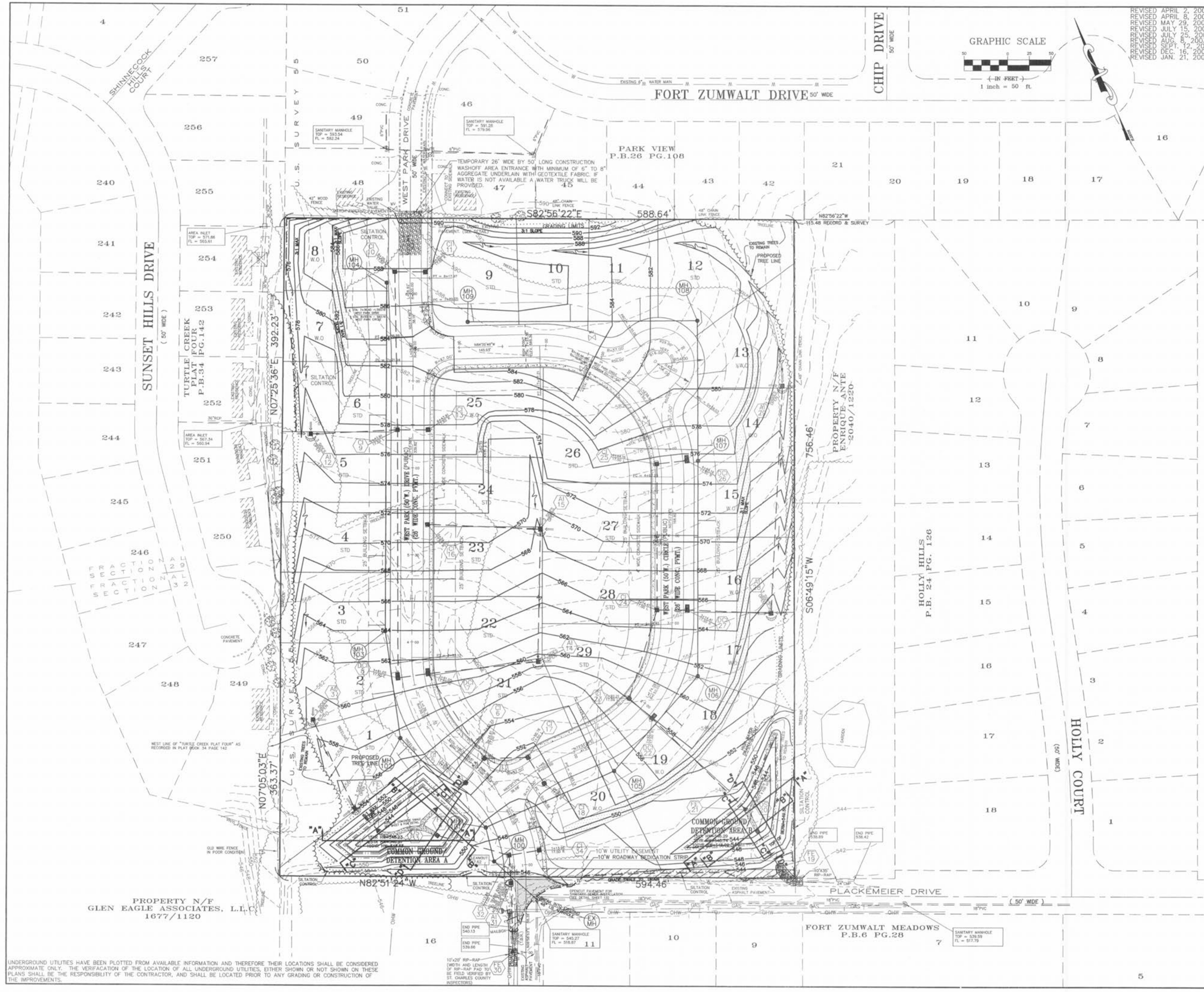
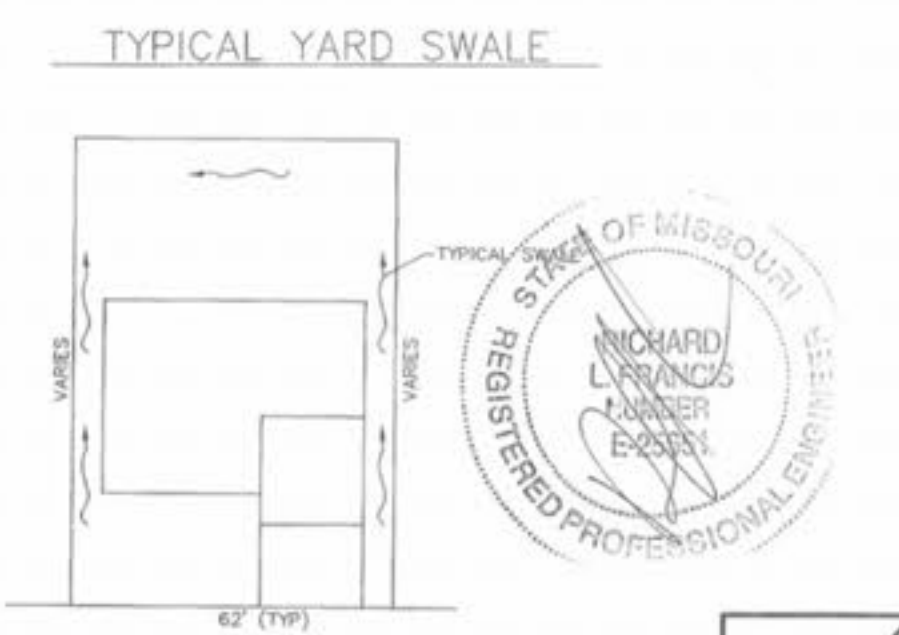
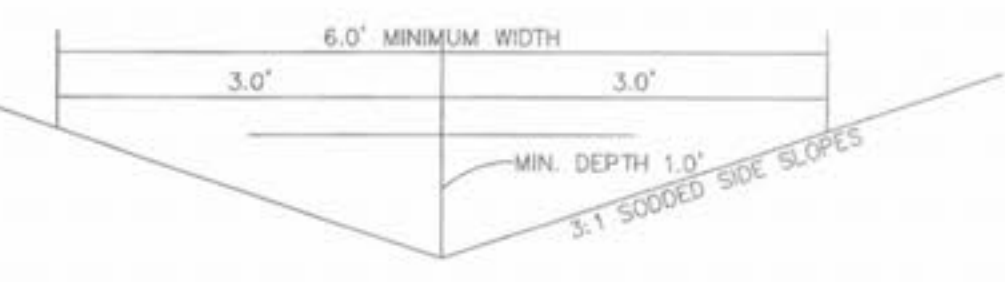
REVISED APRIL 2, 2003 - CITY COMMENTS
 REVISED APRIL 8, 2003 - CITY COMMENTS
 REVISED MAY 29, 2003 - REVISIONS
 REVISED JULY 15, 2003 - COUNTY COMMENTS
 REVISED JULY 25, 2003 - COUNTY COMMENTS
 REVISED AUG. 8, 2003 - CITY COMMENTS
 REVISED SEP. 12, 2003 - CITY COMMENTS
 REVISED DEC. 16, 2003 - REVISE PER AS-BUILTS
 REVISED JAN. 21, 2004 - REDESIGN PER AS-BUILTS



1. FILTER BARRIERS SHALL BE INSPECTED IMMEDIATELY AFTER EACH RAINFALL AND AT LEAST DAILY DURING PROLONGED RAINFALL. ANY REQUIRED REPAIRS SHALL BE MADE IMMEDIATELY.
2. SHOULD THE FABRIC DECOMPOSE OR BECOME INEFFECTIVE PRIOR TO THE END OF THE EXPECTED USABLE LIFE AND THE BARRIER STILL BE NECESSARY, THE FABRIC SHALL BE REPLACED PROMPTLY.
3. SEDIMENT DEPOSITS SHOULD BE REMOVED AFTER EACH STORM EVENT. THEY MUST BE REMOVED WHEN DEPOSITS REACH APPROXIMATELY HALF THE HEIGHT OF THE BARRIER.
4. ANY SEDIMENT DEPOSITS REMAINING IN PLACE AFTER THE SILT FENCE OR FILTER BARRIER IS NO LONGER REQUIRED SHALL BE DRESSED TO CONFORM WITH THE EXISTING GRADE. PREPARED AND SIGNED.

Maximum Discharge (Q) = 4.00 cfs
 Maximum Velocity (V) = 4.00 ft/sec
 N = 0.030 (grass)
 Maximum side slopes = 3 (horizontal) : 1 (vertical)

Longitudinal Slope (%)	Discharge (cfs)	Velocity (ft/sec)	Depth (ft)
0.5	4.00	1.89	0.84
1.0	4.00	2.46	0.74
2.0	4.00	3.12	0.65
3.0	4.00	3.71	0.60
4.0	3.51	4.00	0.54
5.0	2.51	4.00	0.46
6.0	1.91	4.00	0.40
7.0	1.52	4.00	0.36
8.0	1.24	4.00	0.32
9.0	1.04	4.00	0.29
10.0	0.89	4.00	0.24



PROPERTY N/F
 GLEN EAGLE ASSOCIATES, L.L.C.
 1677/1120

FORT ZUMWALT MEADOWS
 P.B.6 PG.28

UNDERGROUND UTILITIES HAVE BEEN PLOTTED FROM AVAILABLE INFORMATION AND THEREFORE THEIR LOCATIONS SHALL BE CONSIDERED APPROXIMATE ONLY. THE VERIFICATION OF THE LOCATION OF ALL UNDERGROUND UTILITIES, EITHER SHOWN OR NOT SHOWN ON THESE PLANS SHALL BE THE RESPONSIBILITY OF THE CONTRACTOR, AND SHALL BE LOCATED PRIOR TO ANY GRADING OR CONSTRUCTION OF THE IMPROVEMENTS.