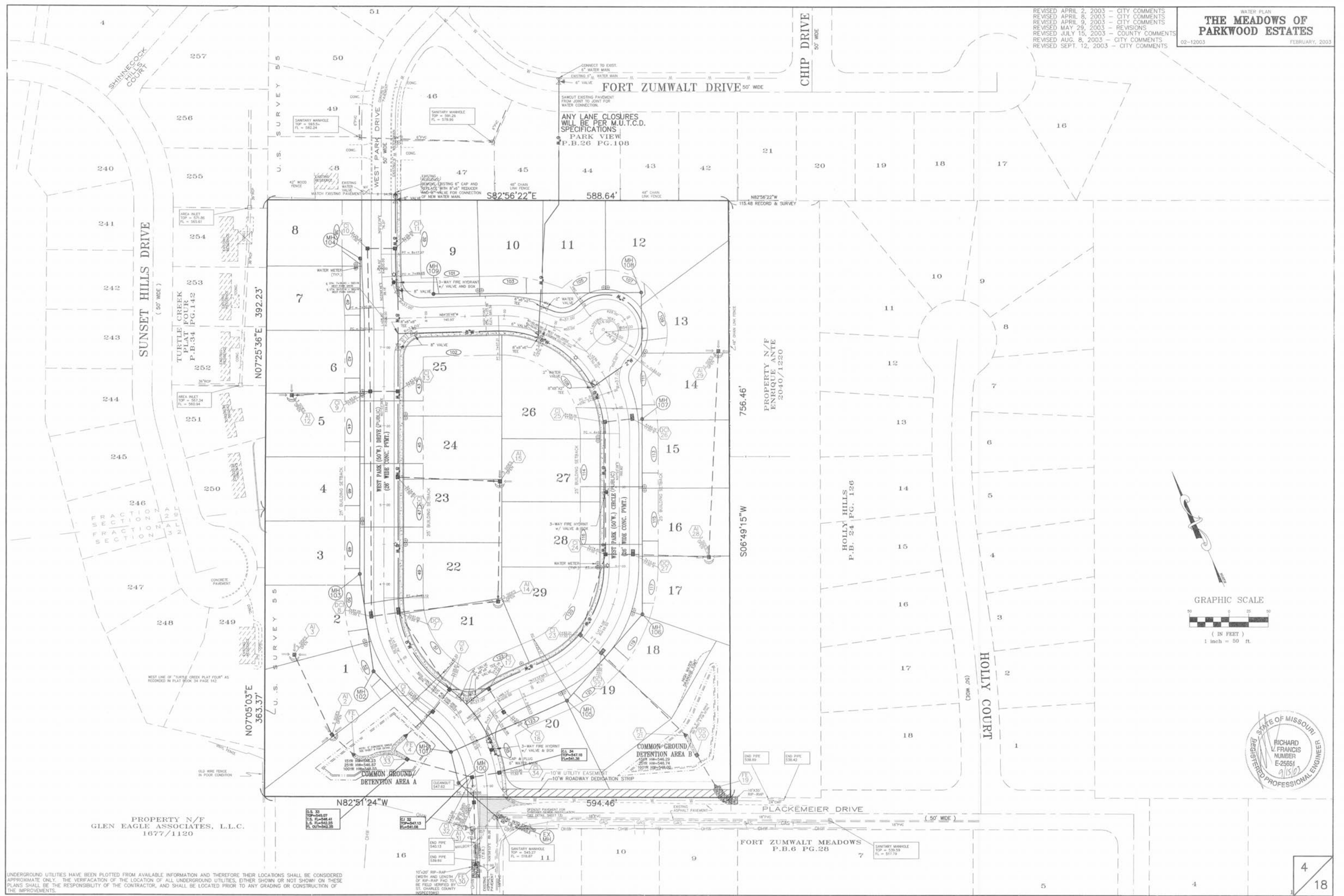
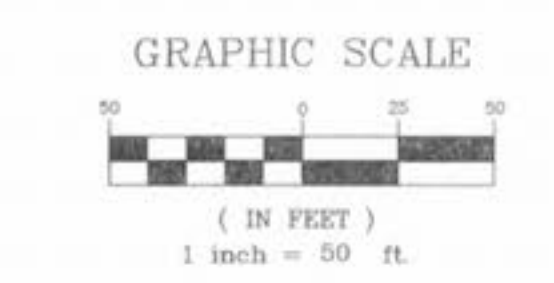


REVISD APRIL 2, 2003 - CITY COMMENTS  
 REVISD APRIL 8, 2003 - CITY COMMENTS  
 REVISD APRIL 9, 2003 - CITY COMMENTS  
 REVISD MAY 29, 2003 - REVISIONS  
 REVISD JULY 15, 2003 - COUNTY COMMENTS  
 REVISD AUG. 8, 2003 - CITY COMMENTS  
 REVISD SEPT. 12, 2003 - CITY COMMENTS



PROPERTY N/F  
 GLEN EAGLE ASSOCIATES, L.L.C.  
 1677/1120

FORT ZUMWALT MEADOWS  
 P.B.6 PG.28



UNDERGROUND UTILITIES HAVE BEEN PLOTTED FROM AVAILABLE INFORMATION AND THEREFORE THEIR LOCATIONS SHALL BE CONSIDERED APPROXIMATE ONLY. THE VERIFICATION OF THE LOCATION OF ALL UNDERGROUND UTILITIES, EITHER SHOWN OR NOT SHOWN ON THESE PLANS SHALL BE THE RESPONSIBILITY OF THE CONTRACTOR, AND SHALL BE LOCATED PRIOR TO ANY GRADING OR CONSTRUCTION OF THE IMPROVEMENTS.