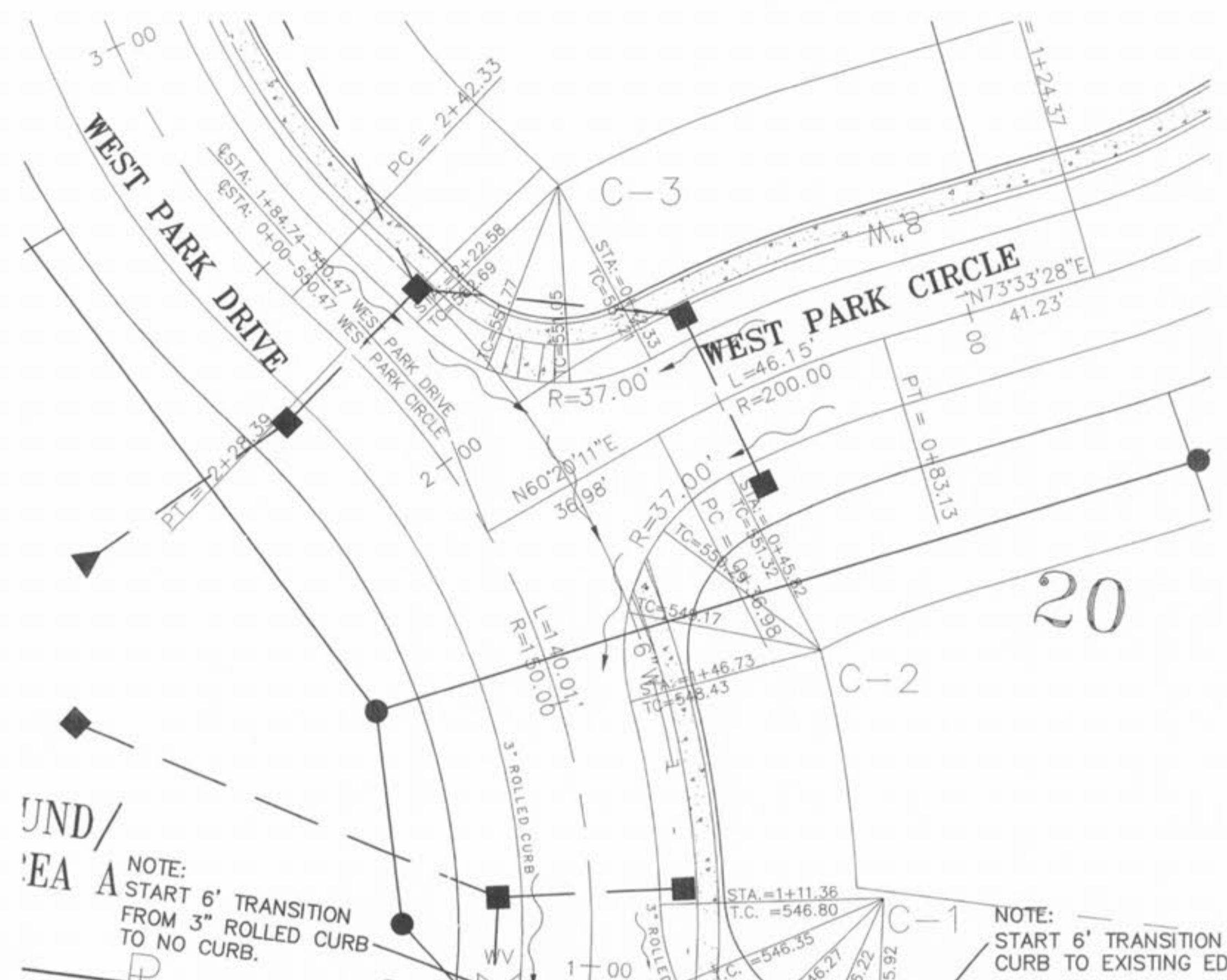


CURVE C-3 DATA
T = 27.89'
L = 47.80'
R = 37.00'
Δ = 74° 00' 56"
CURVE C-2 DATA
T = 29.27'
L = 50.38'
R = 37.00'
Δ = 78° 00' 43"
CURVE C-1 DATA
T = 35.42'
L = 56.51'
R = 37.00'
Δ = 87° 30' 05"



NOTE: START 6' TRANSITION FROM 3" ROLLED CURB TO NO CURB.

NOTE: START 6' TRANSITION FROM 3" ROLLED CURB TO EXISTING EDGE OF PAVT. 10' W DEDICATION STRIP MATCH EX. EDGE OF PAVT

NOTE: REMOVE AND REPLACE EXISTING DRIVEWAY APRON TO 3" TYPE "C" ASPHALTIC WEARING SURFACE OVER 5 1/2" TYPE "X" ASPHALTIC CONCRETE. PROPERTY OWNER TO BE PROVIDED INGRESS/EGRESS DURING CONSTRUCTION.

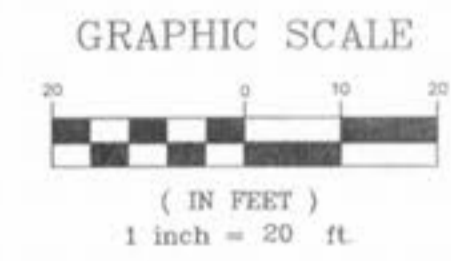
10'x20' RIP-RAP (WIDTH AND LENGTH OF RIP-RAP PAD TO BE FIELD VERIFIED BY ST. CHARLES COUNTY INSPECTORS)

EXISTING ASPHALT PAVEMENT

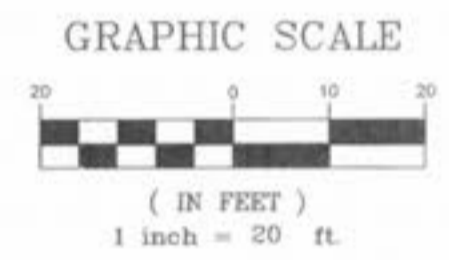
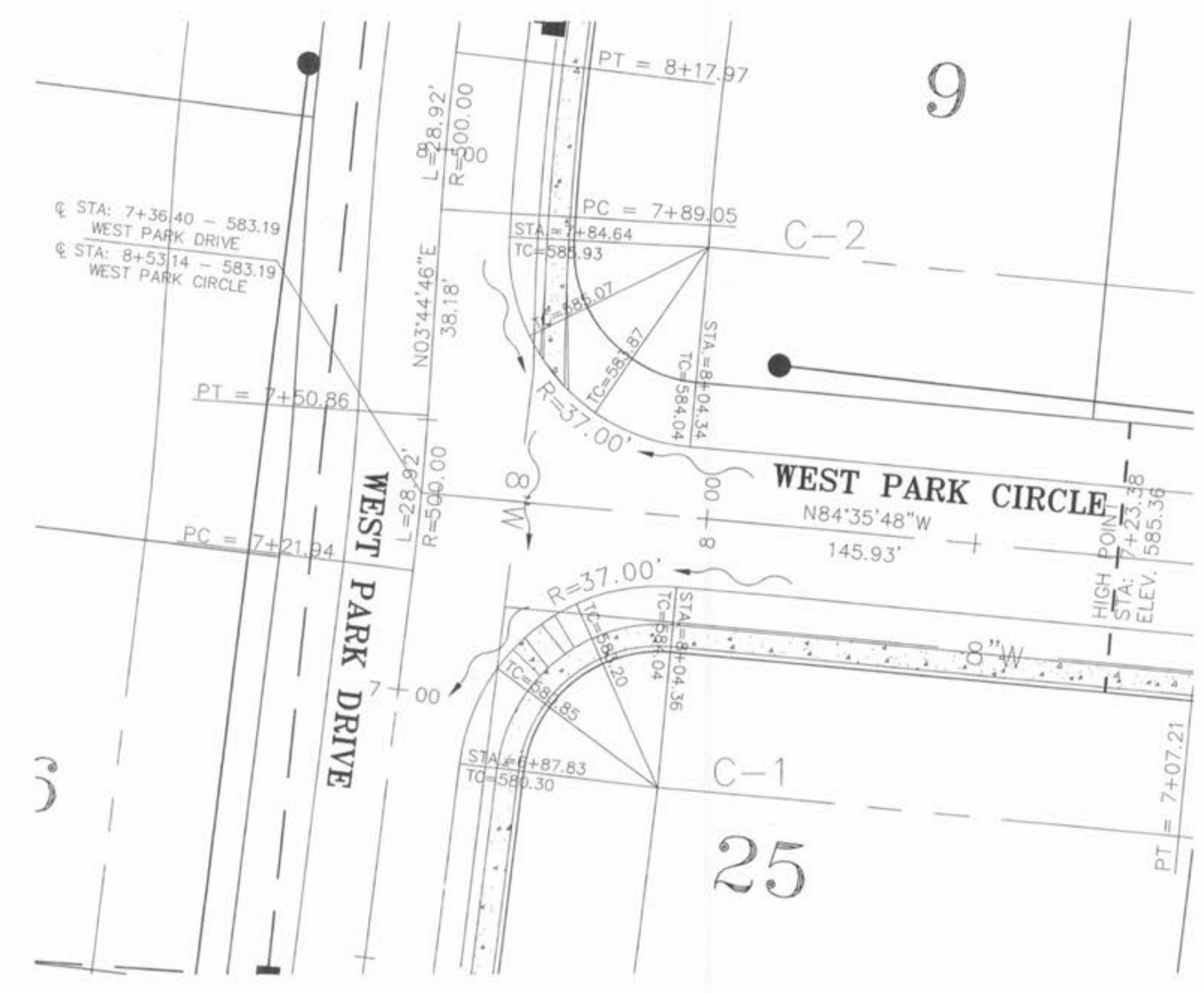
MAILBOX

SAWCUT EXISTING PAVEMENT 1' TO OBTAIN A SMOOTH UNIFORM TRANSITION

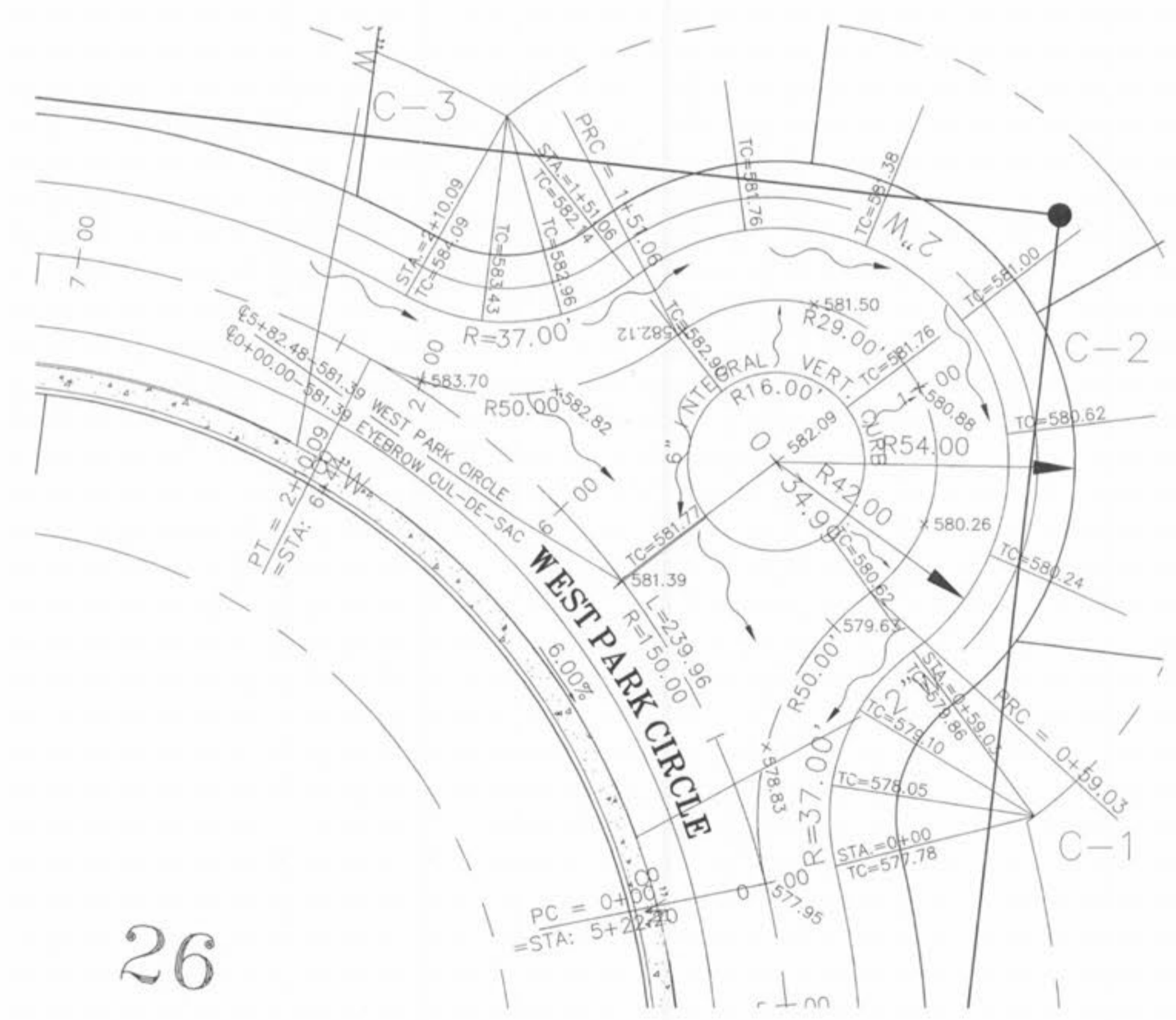
NOTE: PROPOSED PAVEMENT WITHIN COUNTY RIGHT-OF-WAY TO BE 7" P.C. CONCRETE WITH 3" ROLLED CURB OVER 4" COMPACTED STONE



CURVE C-2 DATA
T = 35.62'
L = 57.71'
R = 37.00'
Δ = 87° 49' 27"
CURVE C-1 DATA
T = 35.95'
L = 57.05'
R = 37.00'
Δ = 88° 20' 34"



CURVE C-3 DATA
T = 24.79'
L = 43.68'
R = 37.00'
Δ = 67° 30' 45"
CURVE C-2 DATA
T = 00.00'
L = 133.28'
R = 37.00'
Δ = 101° 49' 02"
CURVE C-1 DATA
T = 24.79'
L = 43.68'
R = 37.00'
Δ = 67° 38' 45"



UNDERGROUND UTILITIES HAVE BEEN PLOTTED FROM AVAILABLE INFORMATION AND THEREFORE THEIR LOCATIONS SHALL BE CONSIDERED APPROXIMATE ONLY. THE VERIFICATION OF THE LOCATION OF ALL UNDERGROUND UTILITIES, EITHER SHOWN OR NOT SHOWN ON THESE PLANS SHALL BE THE RESPONSIBILITY OF THE CONTRACTOR, AND SHALL BE LOCATED PRIOR TO ANY GRADING OR CONSTRUCTION OF THE IMPROVEMENTS.

