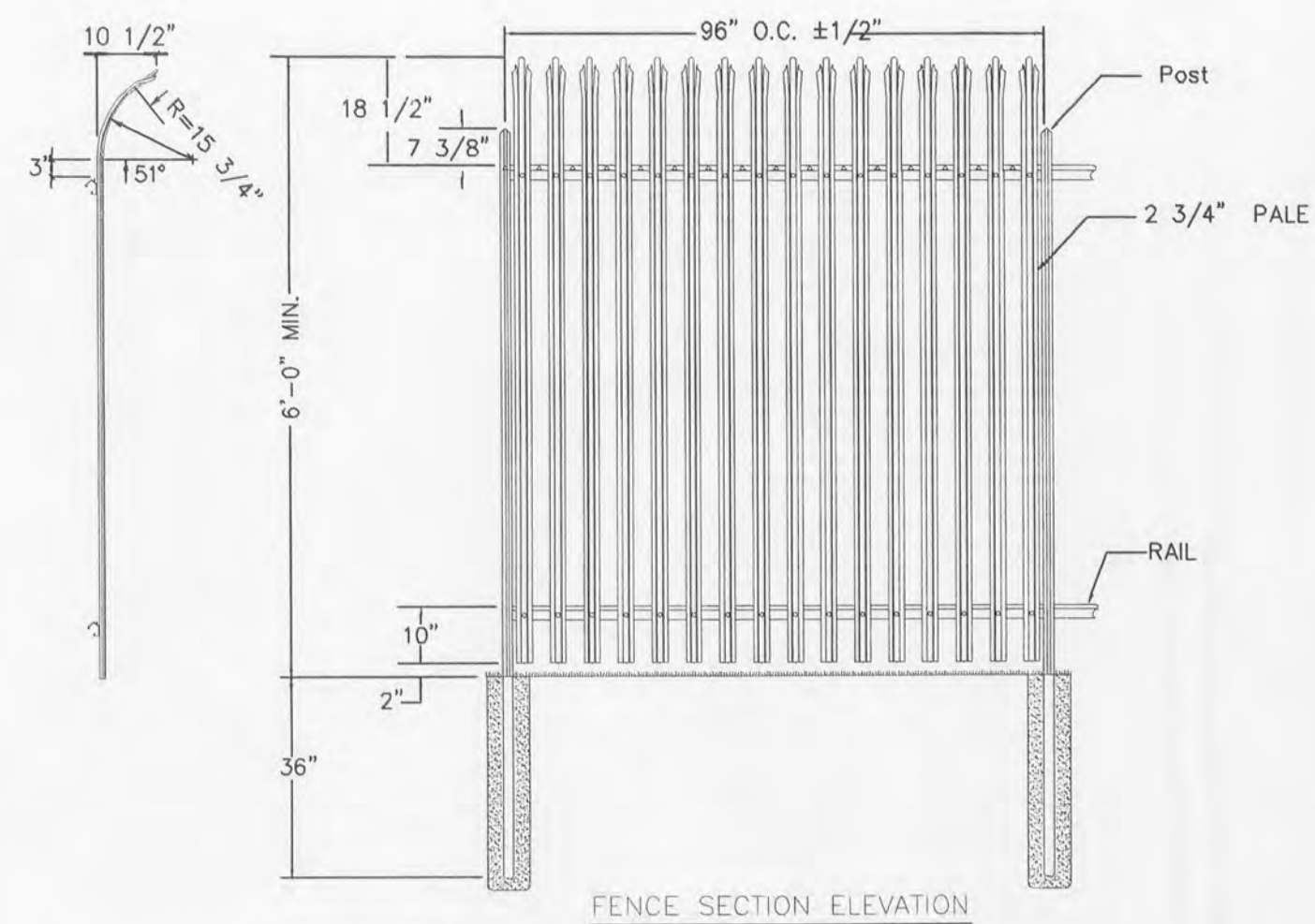


NOTE: ALL PROPOSED FENCING REQUIRES A SEPARATE PERMIT THROUGH THE PLANNING DIVISION.



NOTES:
1. METRIC DIMENSIONS ARE NOMINAL EQUIVALENTS TO U.S. DIMENSIONS.
2. SPECIFICATIONS SHOWN CAN BE CHANGED BY MASTER-HALCO ONLY.
3. FOOTING WIDTH TO BE (4)X POST WIDTH. MINIMUM DEPTH 36" [914MM].

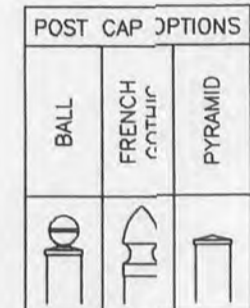
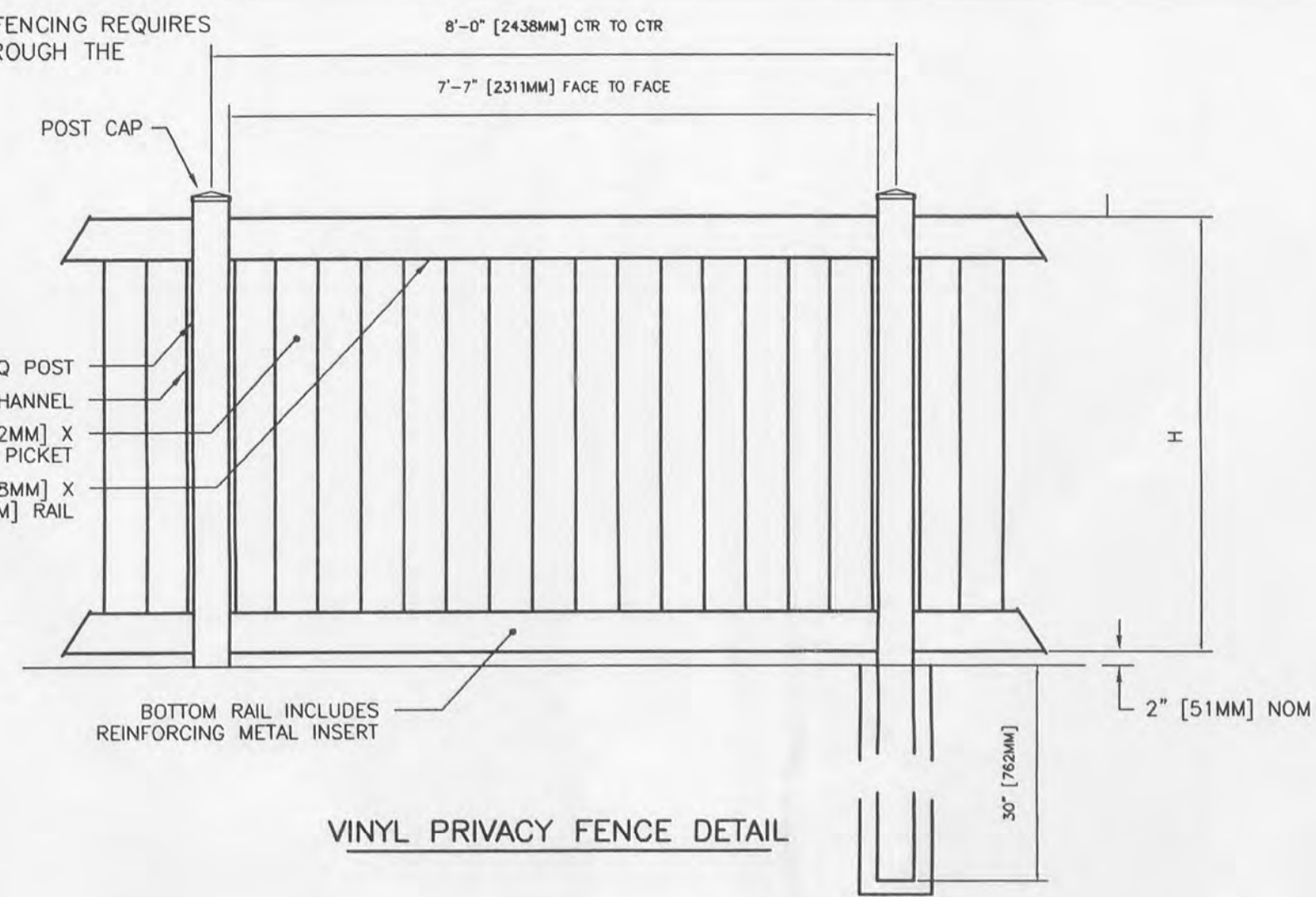
(MADE BY)

THIS FENCE OR APPROVED EQUAL TO BE CONSTRUCTED AROUND DETENTION BASIN.

MASTER-HALCO, INC.
LA HABRA, CALIFORNIA

IMPASSETM	BY: JRR	DWG: 22-1810
GAUNTLET 2-RAIL PANEL, 8 FT. O.C.	DATE: 03-29-04	
	REV: A	LAYER: 1
	REV DATE:	SCALE: 1/2" = 1'-0"

NOTE: ALL PROPOSED FENCING REQUIRES A SEPARATE PERMIT THROUGH THE PLANNING DIVISION.



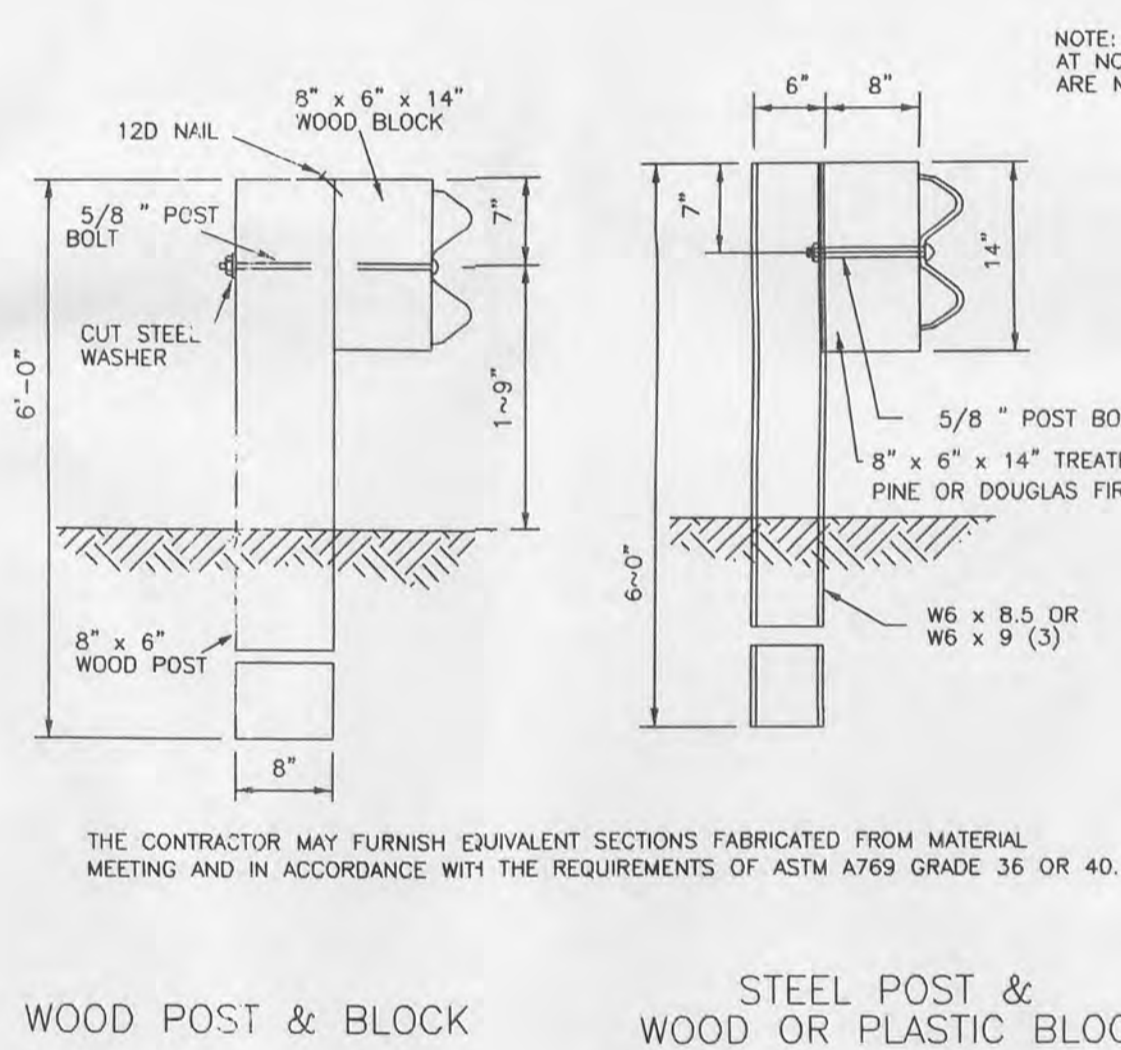
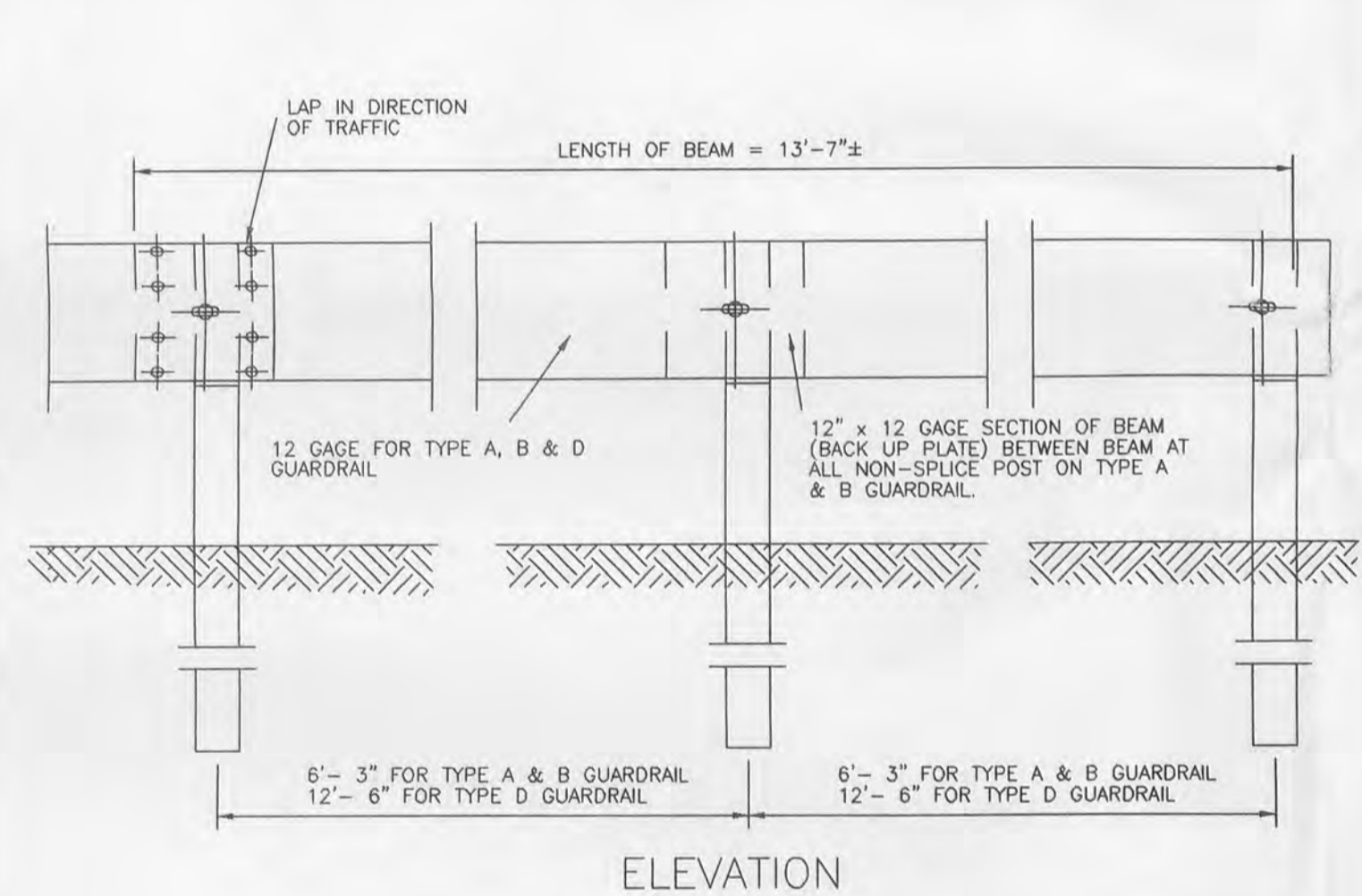
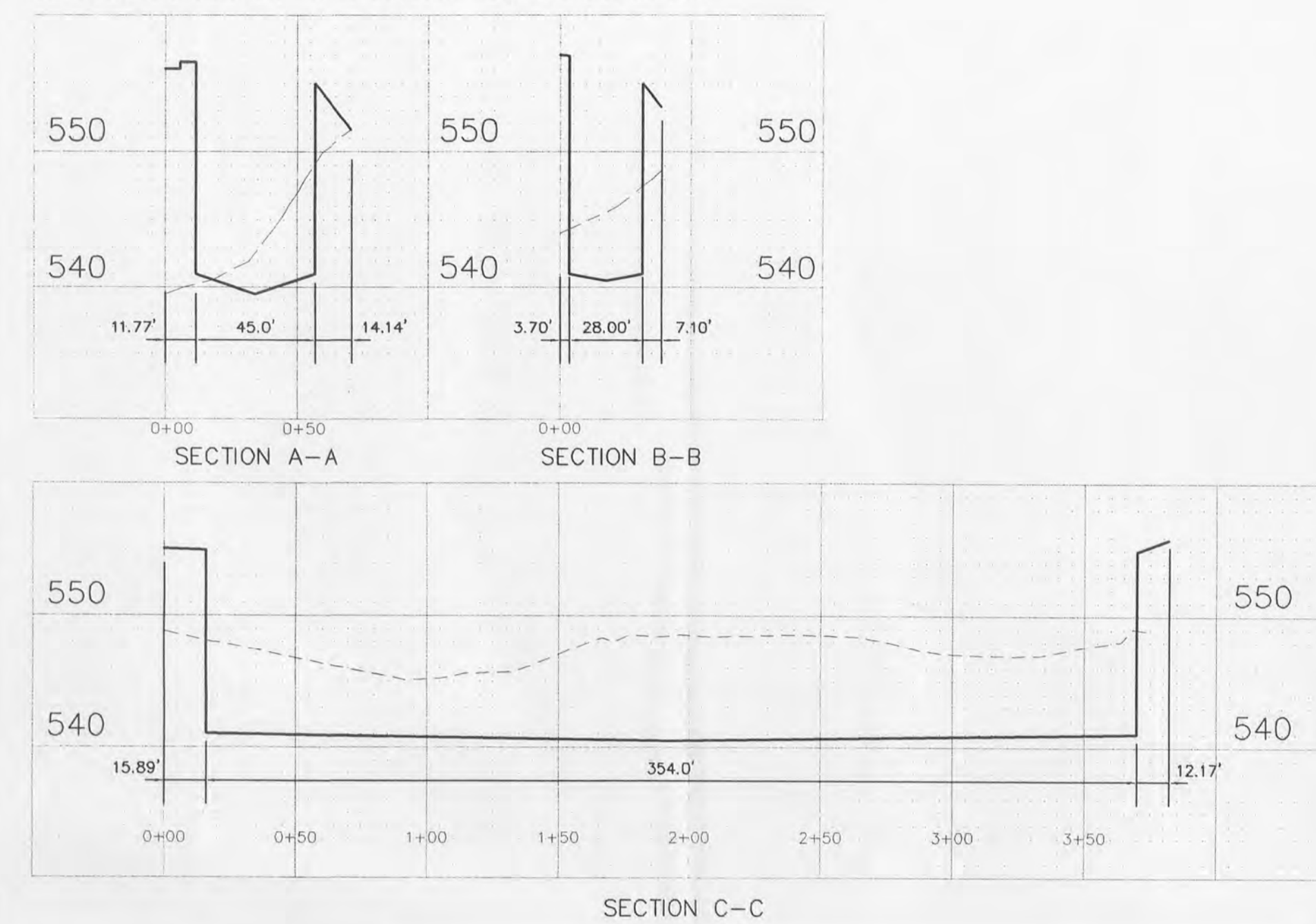
NOTES:
1. METRIC DIMENSIONS ARE NOMINAL EQUIVALENTS TO U.S. DIMENSIONS.
2. SPECIFICATIONS SHOWN CAN BE CHANGED BY MASTER-HALCO ONLY.
3. FOOTING WIDTH TO BE (2)X POST WIDTH. MINIMUM DEPTH 30" [762MM].

NOM HEIGHT (H)
46" [1168MM]
58" [1473MM]
70" [1778MM]

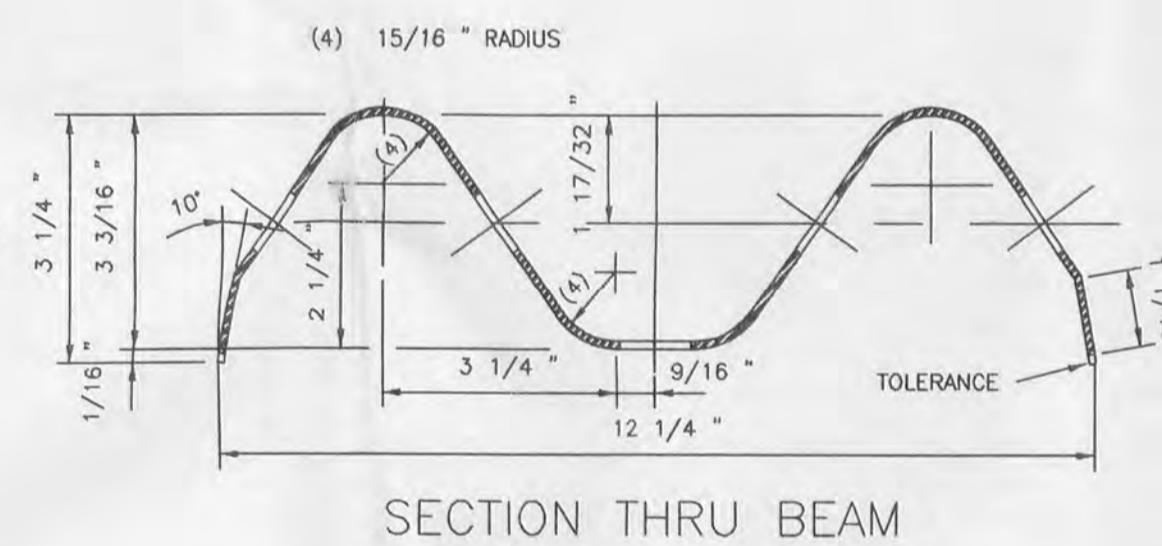
LEGEND
by MASTER-HALCO

PRIVACY STYLE FENCE	97-1460
NOM 8' SECTION LENGTH	

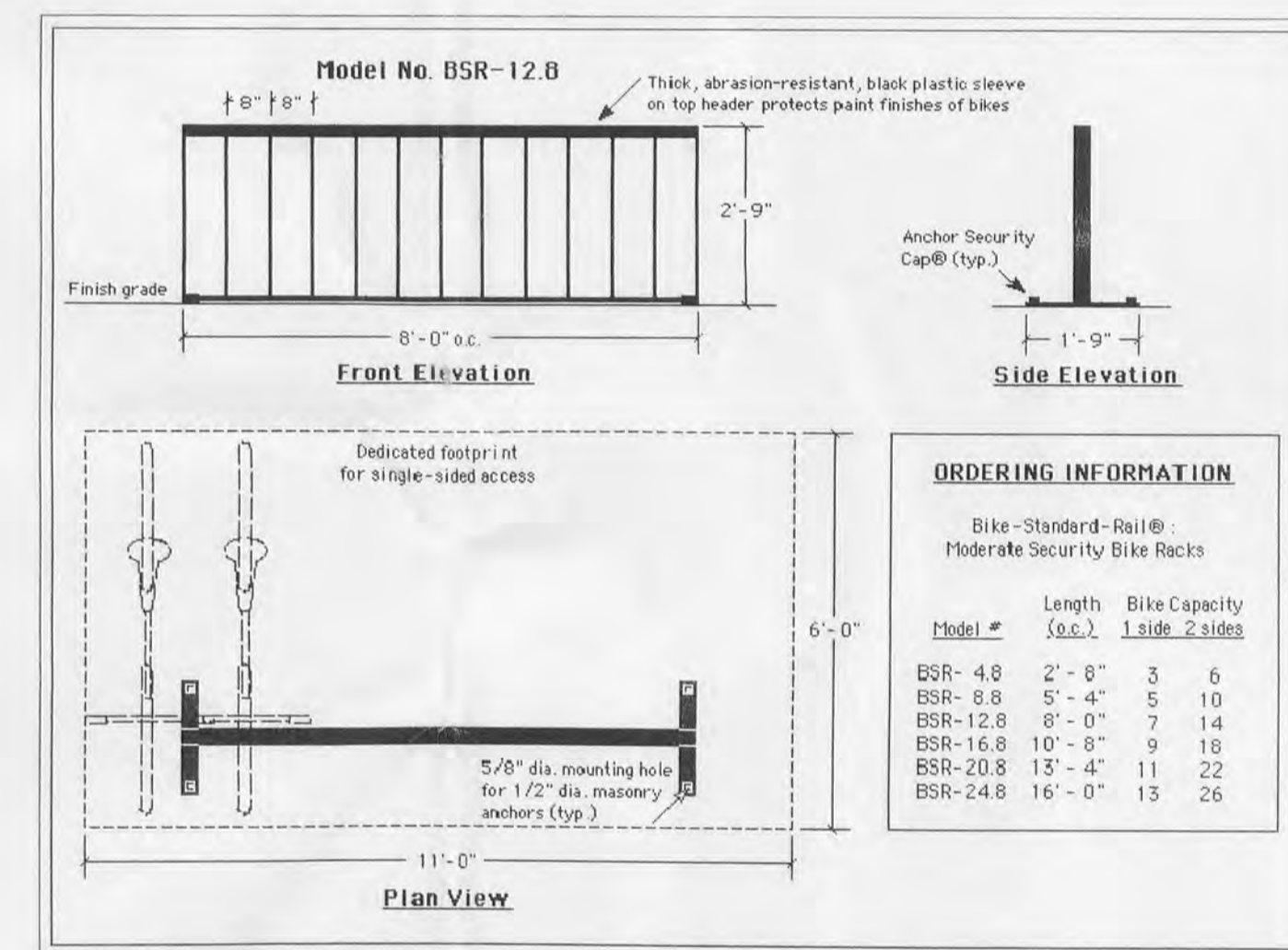
DETENTION BASIN SECTIONS



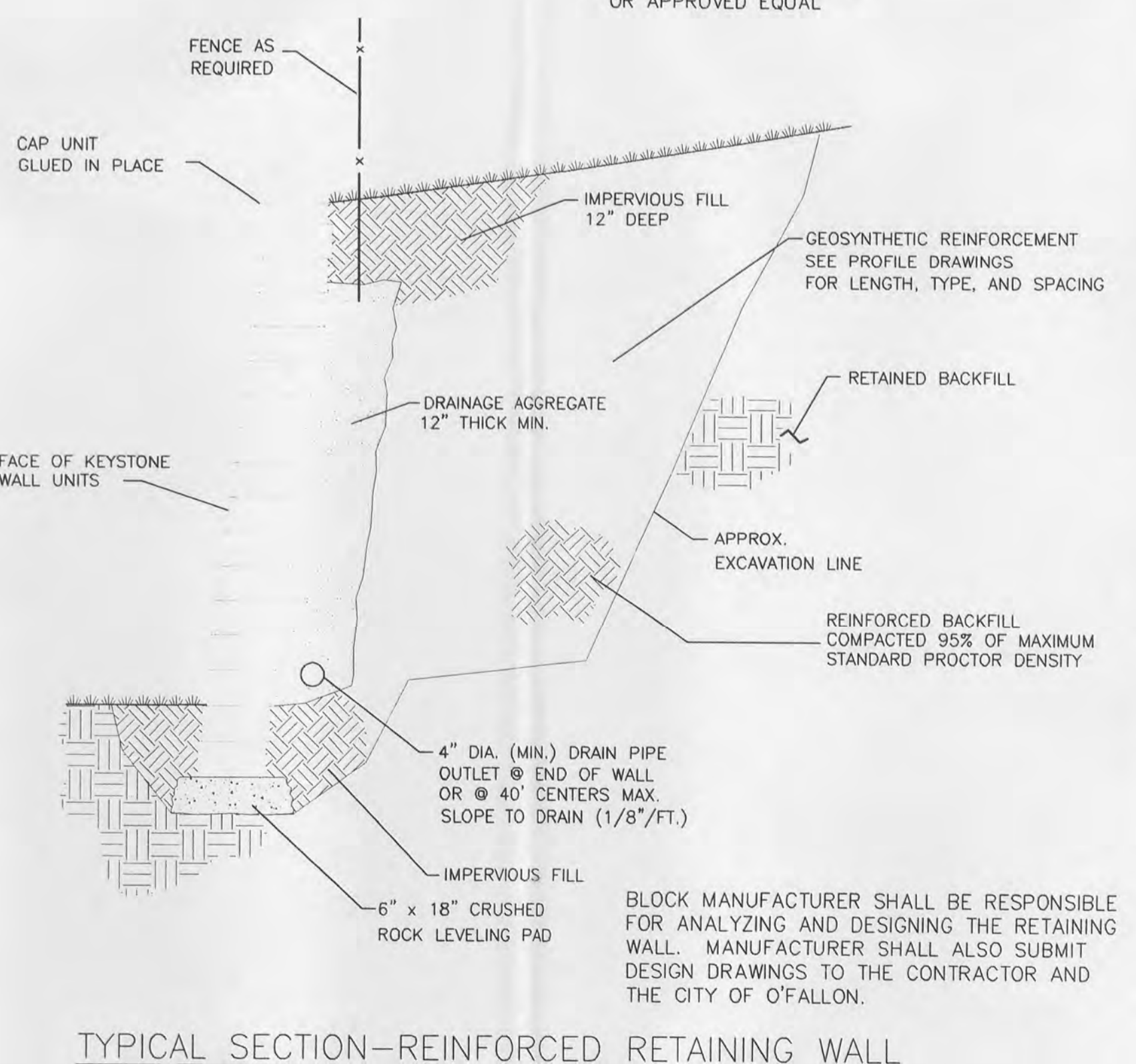
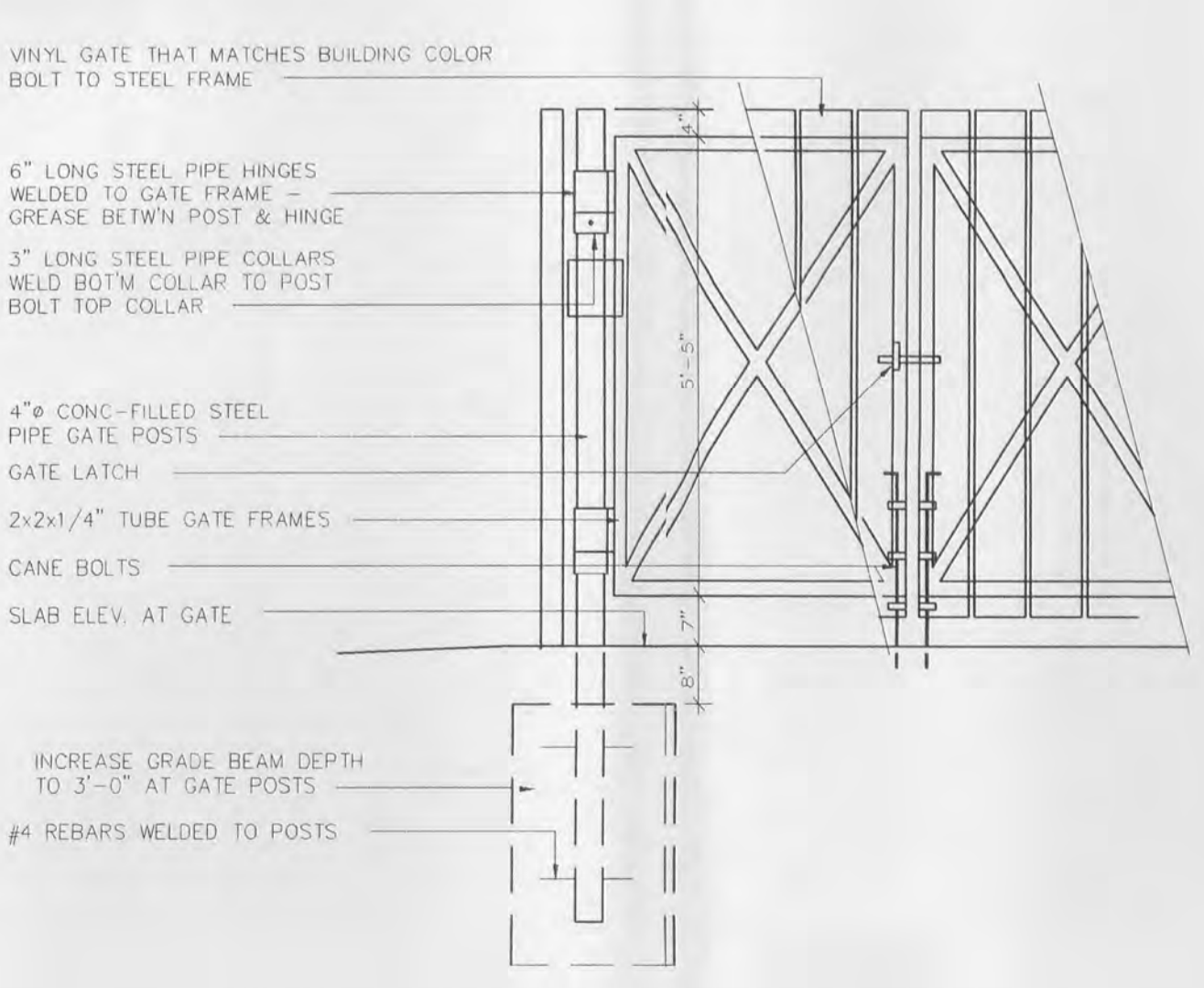
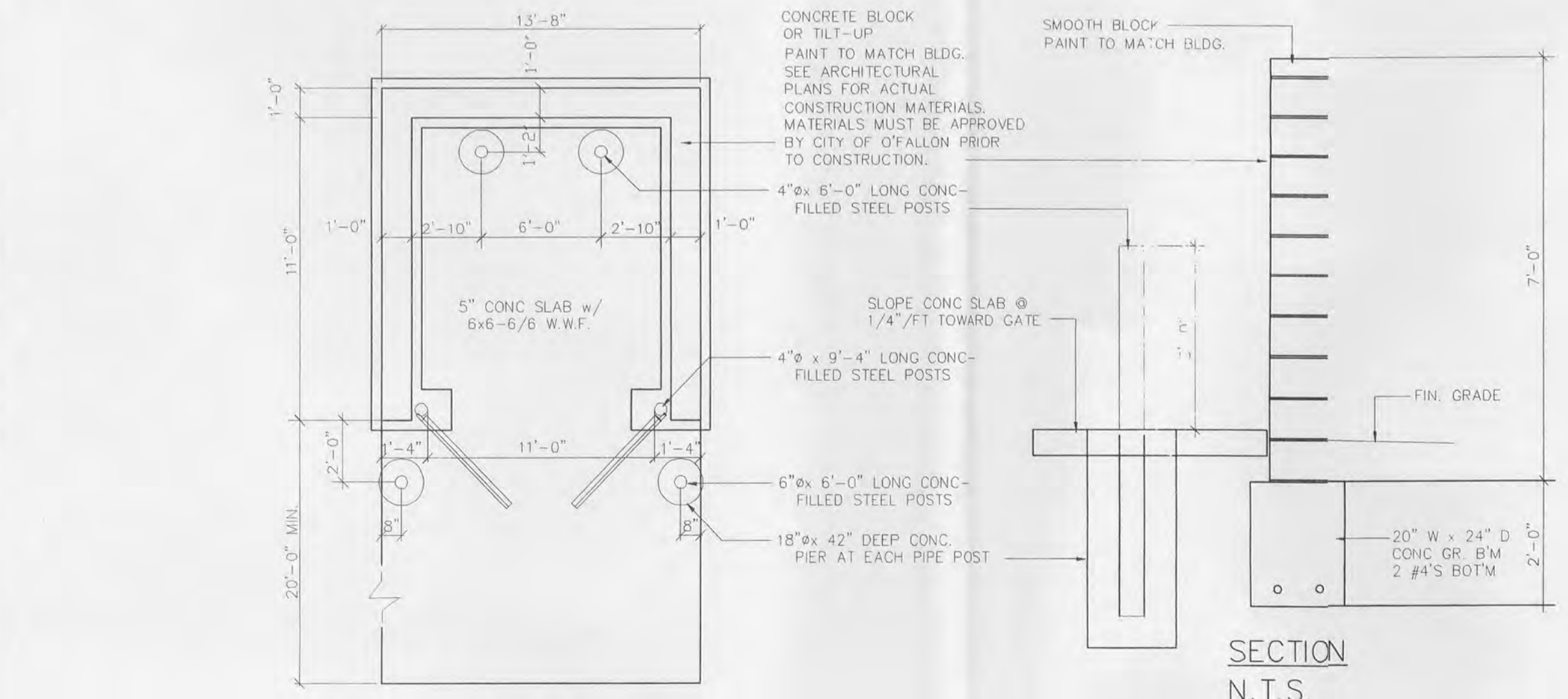
NOTE: BACK-UP PLATES AT NON-SPLICE LOCATIONS ARE NOT REQUIRED.



THE CONTRACTOR MAY FURNISH EQUIVALENT SECTIONS FABRICATED FROM MATERIAL MEETING AND IN ACCORDANCE WITH THE REQUIREMENTS OF ASTM A769 GRADE 36 OR 40.



Model #	Length (ft.)	Bike Capacity
BSR-4.8	4'-8"	4
BSR-8.8	8'-8"	8
BSR-12.8	12'-8"	12
BSR-16.8	16'-8"	16
BSR-20.8	20'-8"	20
BSR-24.8	24'-8"	24



PICKETT RAY & SILVER
CIVIL ENGINEERS
PLANNERS
LAND SURVEYORS
333 Mid Rivers Mall Drive
St. Peters, MO 63376
Phone (636) 397-1211
Fax (636) 397-1104

MEGAN CROSSING
MISSOURI STATE HIGHWAY K
O'FALLON, MISSOURI
Prepared For:
G. J. GREWE, INC.
9109 WATSON ROAD
ST. LOUIS, MO
(314) 962-6500

NO.	DATE	DESCRIPTION
07-12-04	07-12-04	PER CITY OF O'FALLON
08-13-04	08-13-04	PER CITY OF O'FALLON
01-21-05	01-21-05	PER DEVELOPER

ENGINEERS AUTHENTICATION
The responsibility for professional engineering liability on this project is hereby limited to the set of plans authenticated by the seal, signature, and date hereunder attached. Responsibility is disclaimed for all other engineering plans involved in this project and specifically excludes revisions after this date unless reauthenticated.
PICKETT, RAY & SILVER, INC.
ERIC SCOTT KIRCHNER
E-2001004618
Professional Engineer

DRAWN D.STOSZ	DATE 04-27-04
CHECKED D.BYRD	DATE 04-27-04
PROJECT # 03043.GGR.OOC	TASK # 1 FIELD BOOK

MEGAN CROSSING
CONSTRUCTION DETAILS
SHEET 8 OF 13
Copyright 2003 by Pickett, Ray & Silver, Inc.

FILE #2002.04