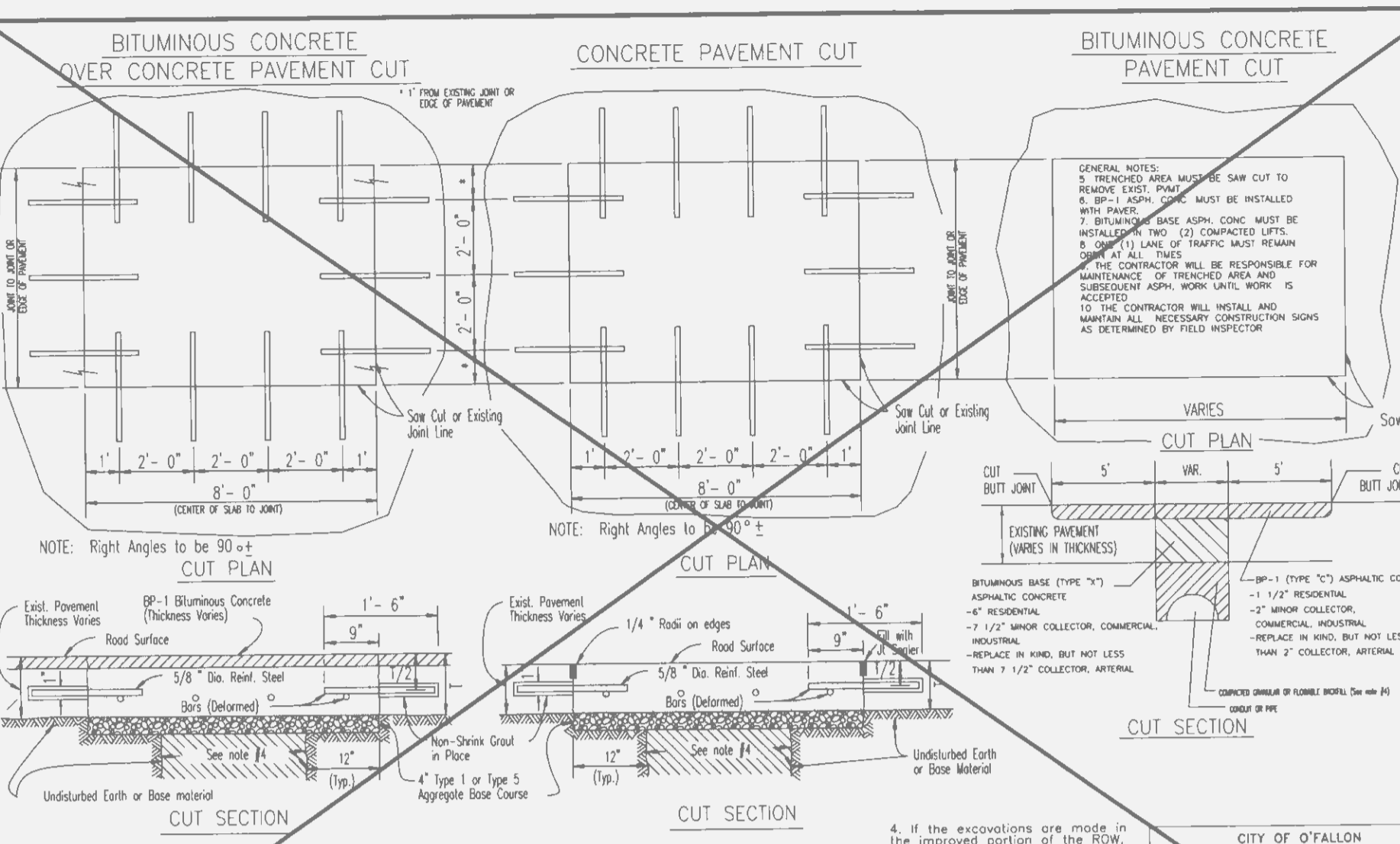


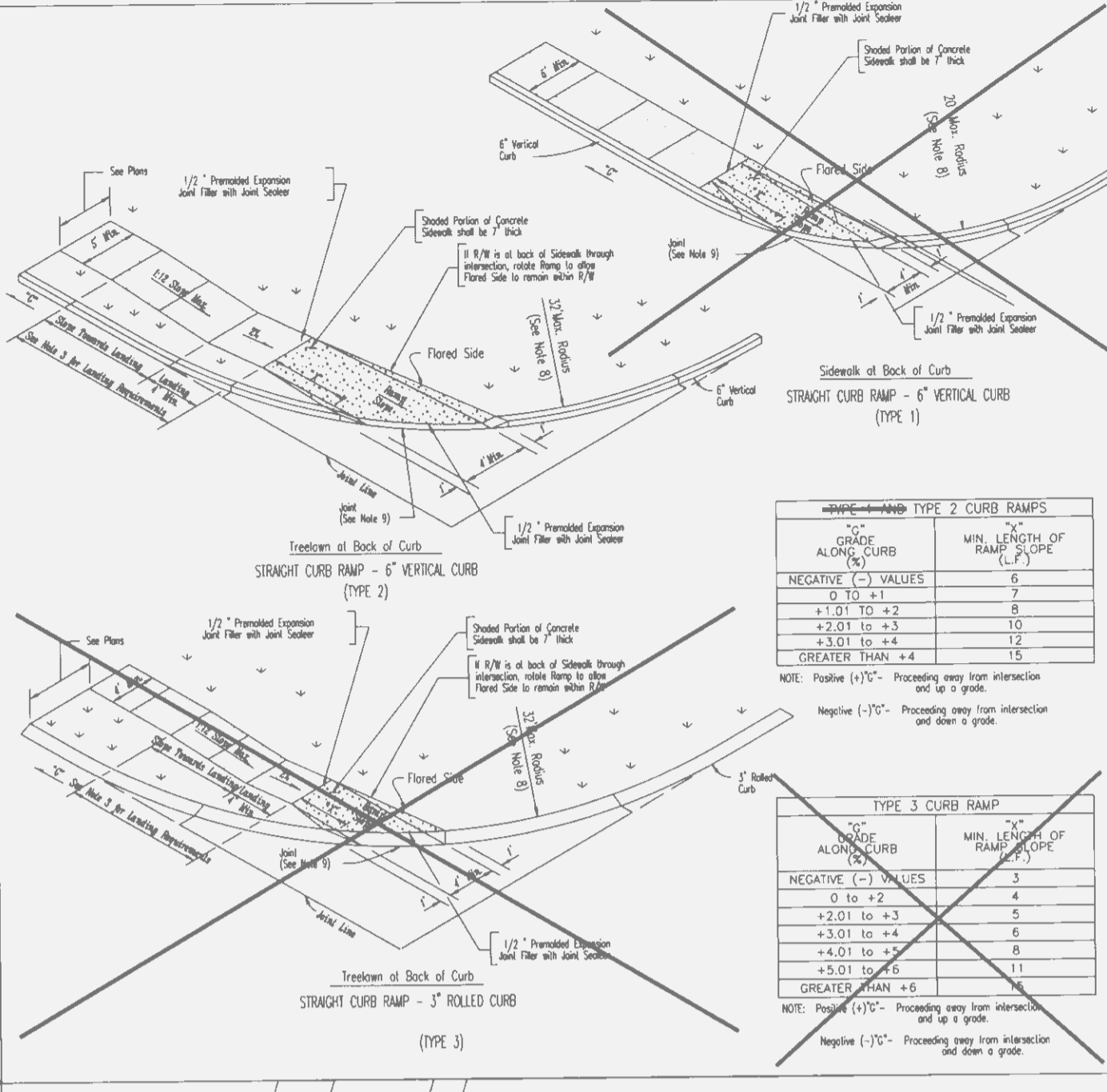
- GENERAL NOTES**
- Do not scale drawing. Follow dimensions.
 - For longitudinal and transverse joints, dowel and tie bar requirements and curb dimensions not shown refer to the Pavement Construction Details for Joints and Curbs.
 - All necessary pavement markings shall be as required by AASHTO.
 - For roadway cross slopes, pavement types and thickness refer to Standard Typical Sections.
 - Removal of the temporary turnaround surface, the restoration of the disturbed ground, and the extension of any sidewalk shall be the responsibility of the party(ies) that will be extending the street.
 - Other temporary turn around types can be considered depending on type and dimensions.
 - Slab streets over two hundred fifty (250) feet shall have a minimum temporary turnaround pavement radius of forty (40) feet, covered by a temporary turnaround pavement to remain until the road is extended and plotted. In lieu of turnarounds, the Planning and Zoning Commission may approve a "T" or "Y" shaped paved space on streets which are less than two hundred fifty (250) feet in length and are planned to be extended in the future.

TEMPORARY TURNAROUND



- GENERAL NOTES**
- Minimum thickness for pavement replacement to be 4\"/>

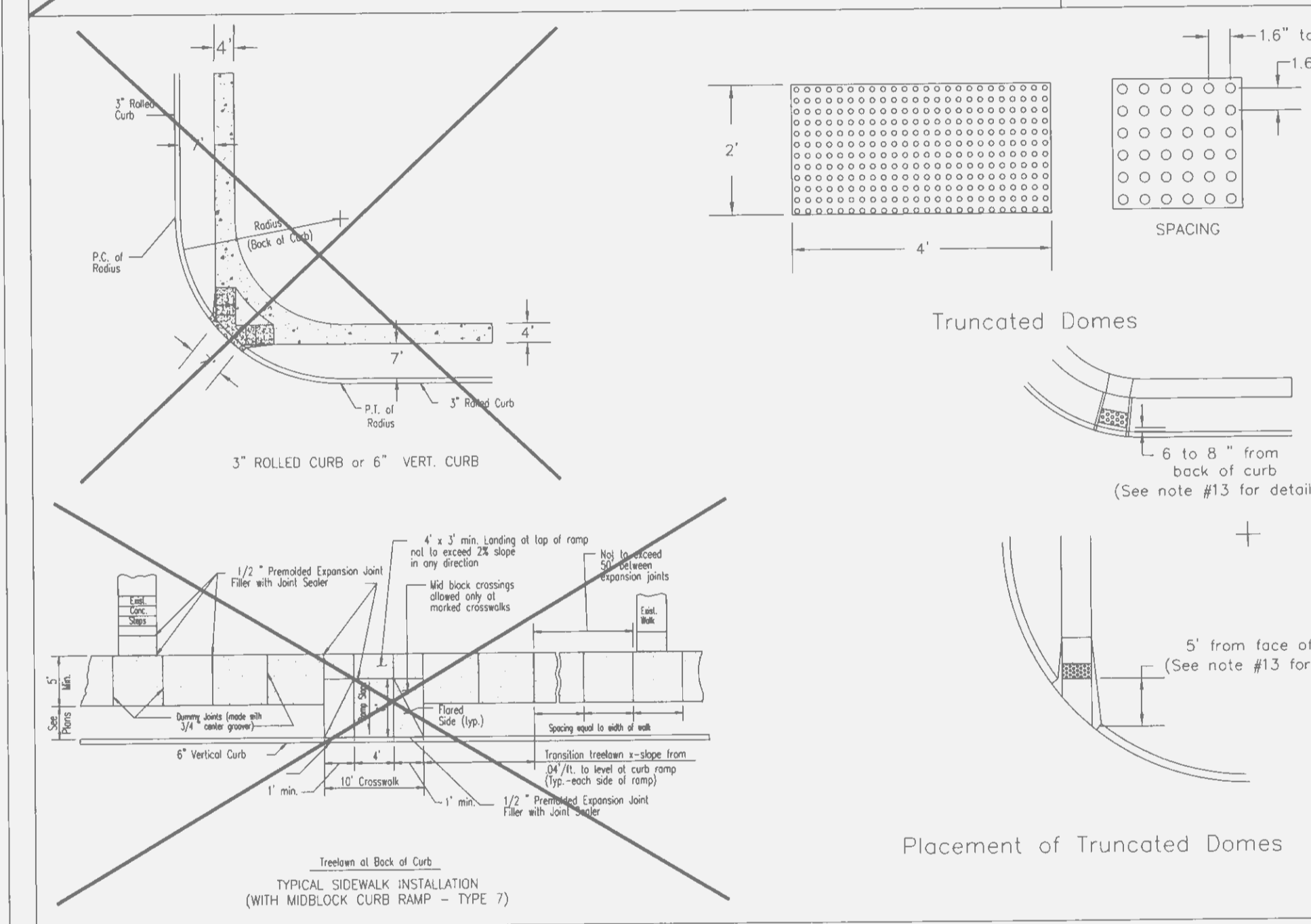
PAVEMENT CONSTRUCTION DETAILS RESIDENTIAL TEMPORARY TURNAROUND



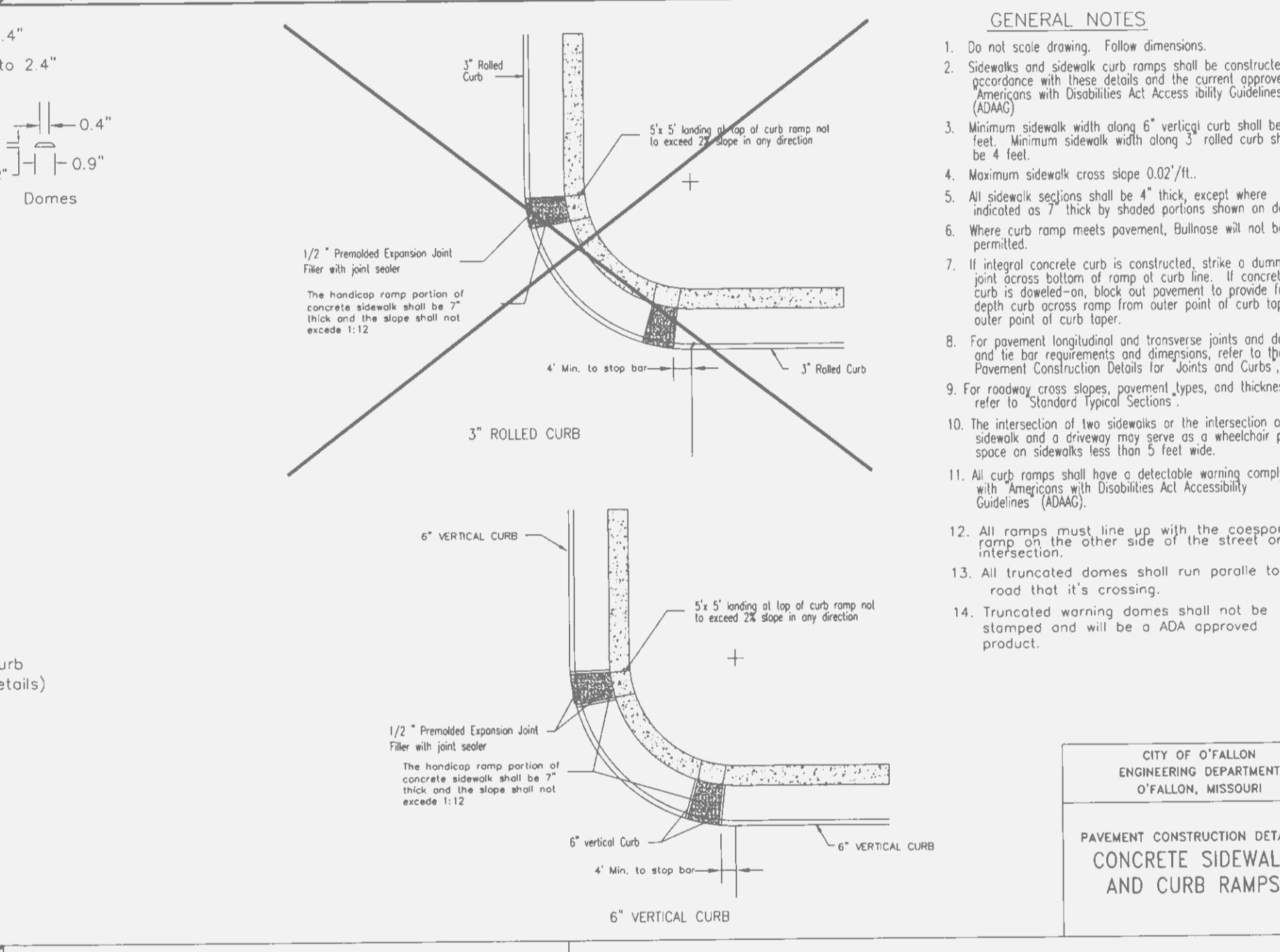
DETAILS OF TEMPORARY OPENINGS IN ROADWAY PAVEMENT

- GENERAL NOTES**
- Do not scale drawing. Follow dimensions.
 - Sidewalk and sidewalk curb ramps shall be constructed in accordance with these details and the current approved Amendments with Disabilities Act Accessible Guidelines (ADAG).
 - Minimum sidewalk width along 6\"/>

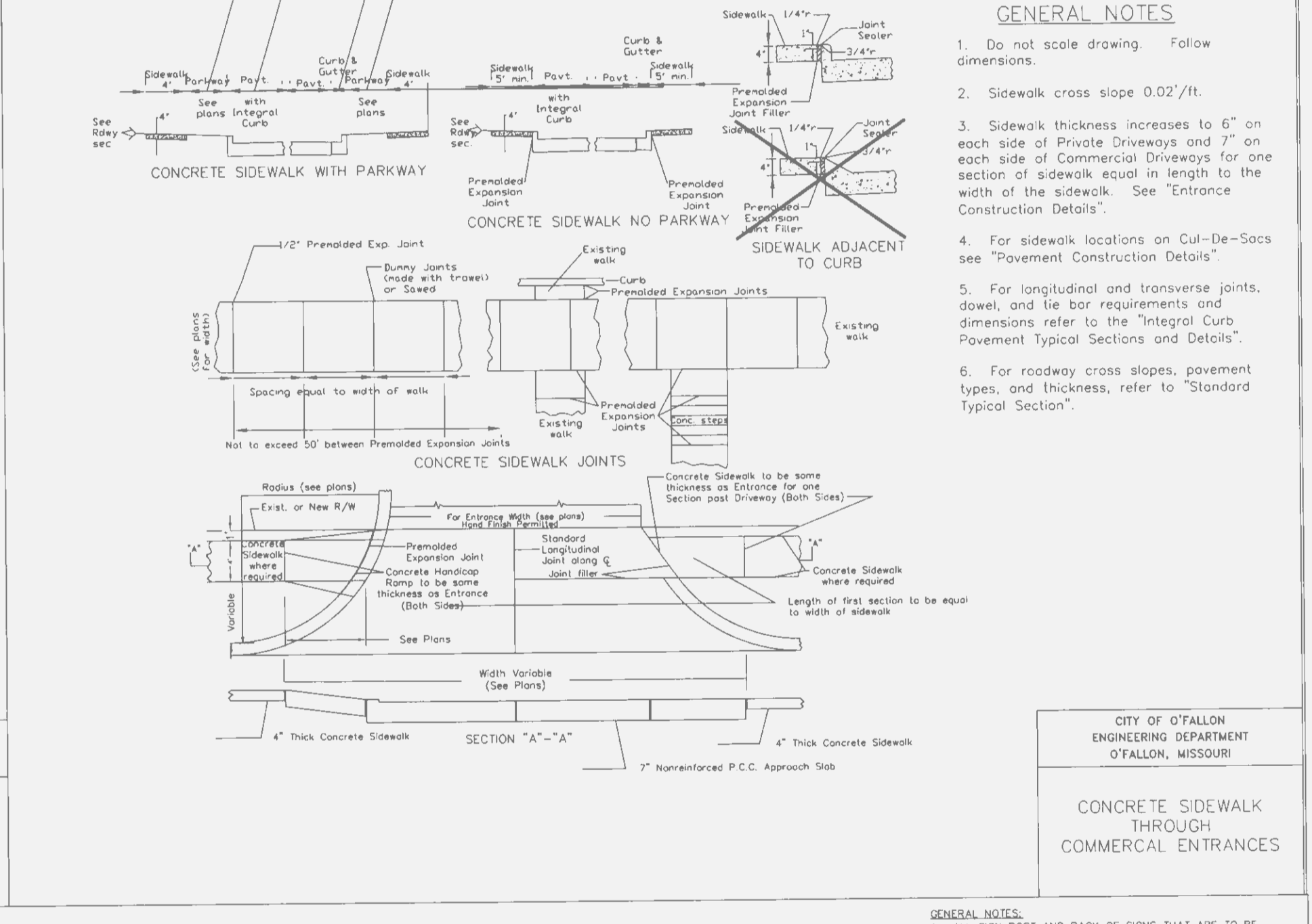
CONCRETE SIDEWALK WITHIN CUL-DE-SACS



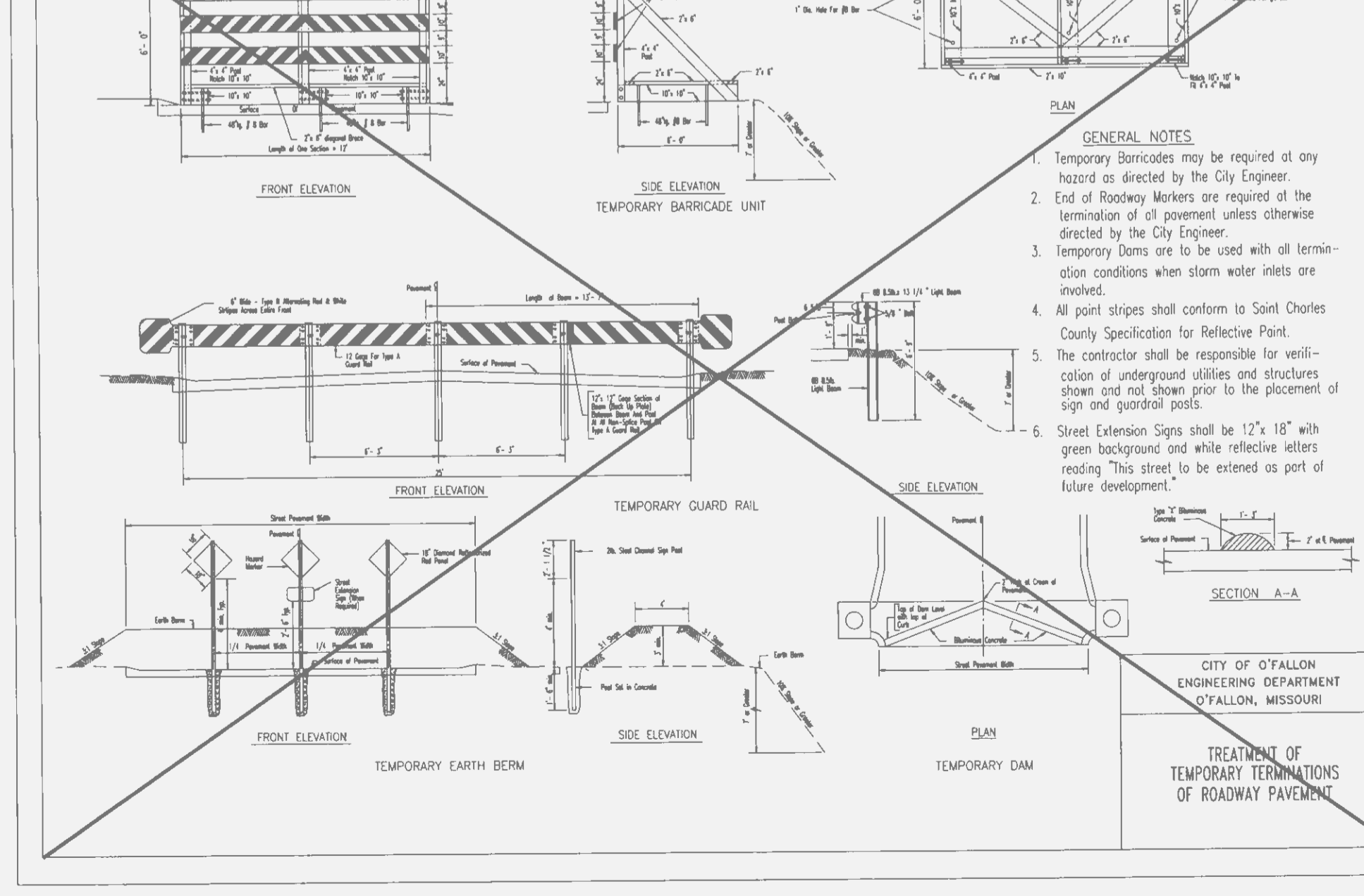
TYPICAL SIDEWALK INSTALLATION (WITH MIDLOCK CURB RAMP - TYPE 7)



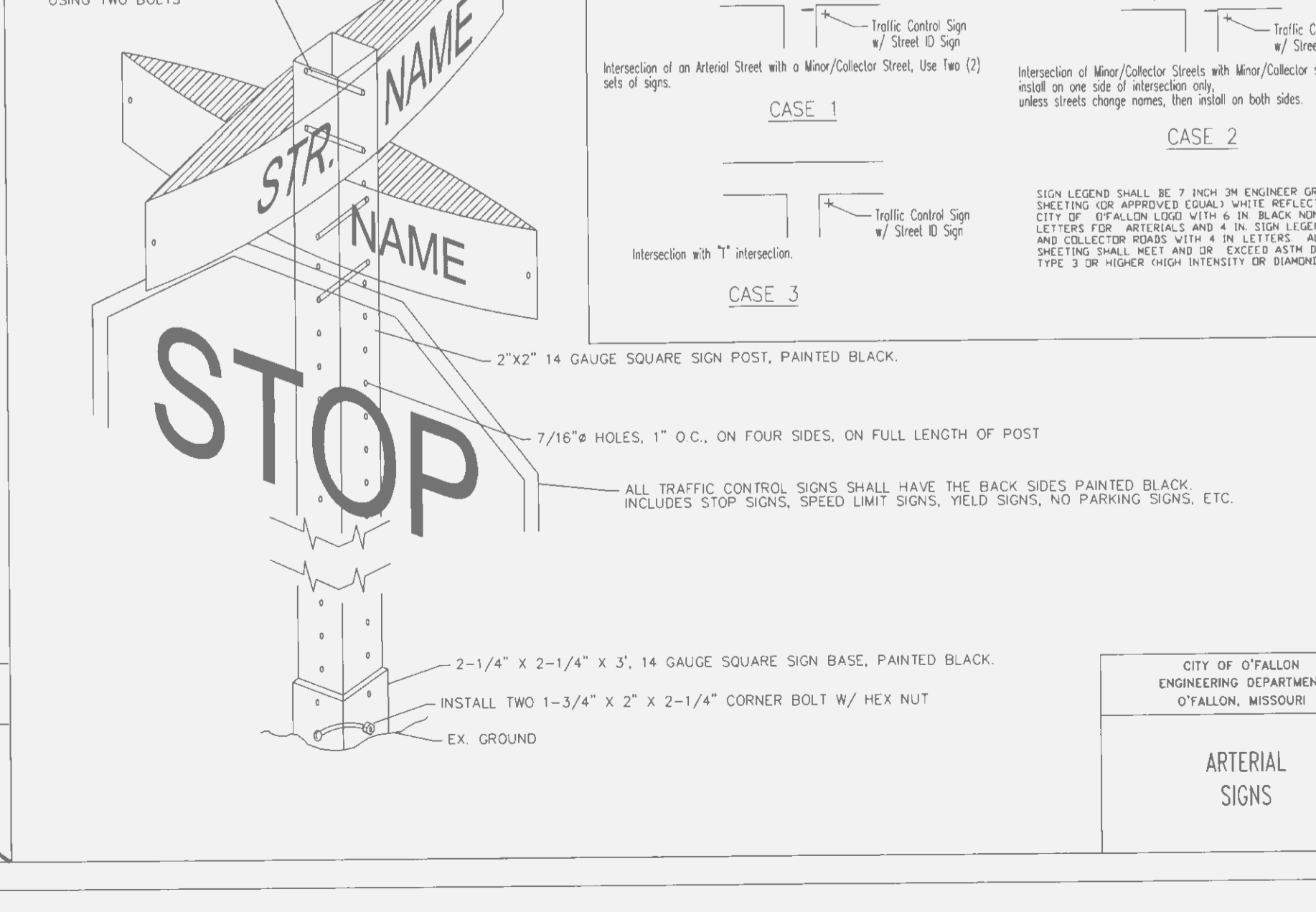
PAVEMENT CONSTRUCTION DETAILS CONCRETE SIDEWALK AND CURB RAMPS



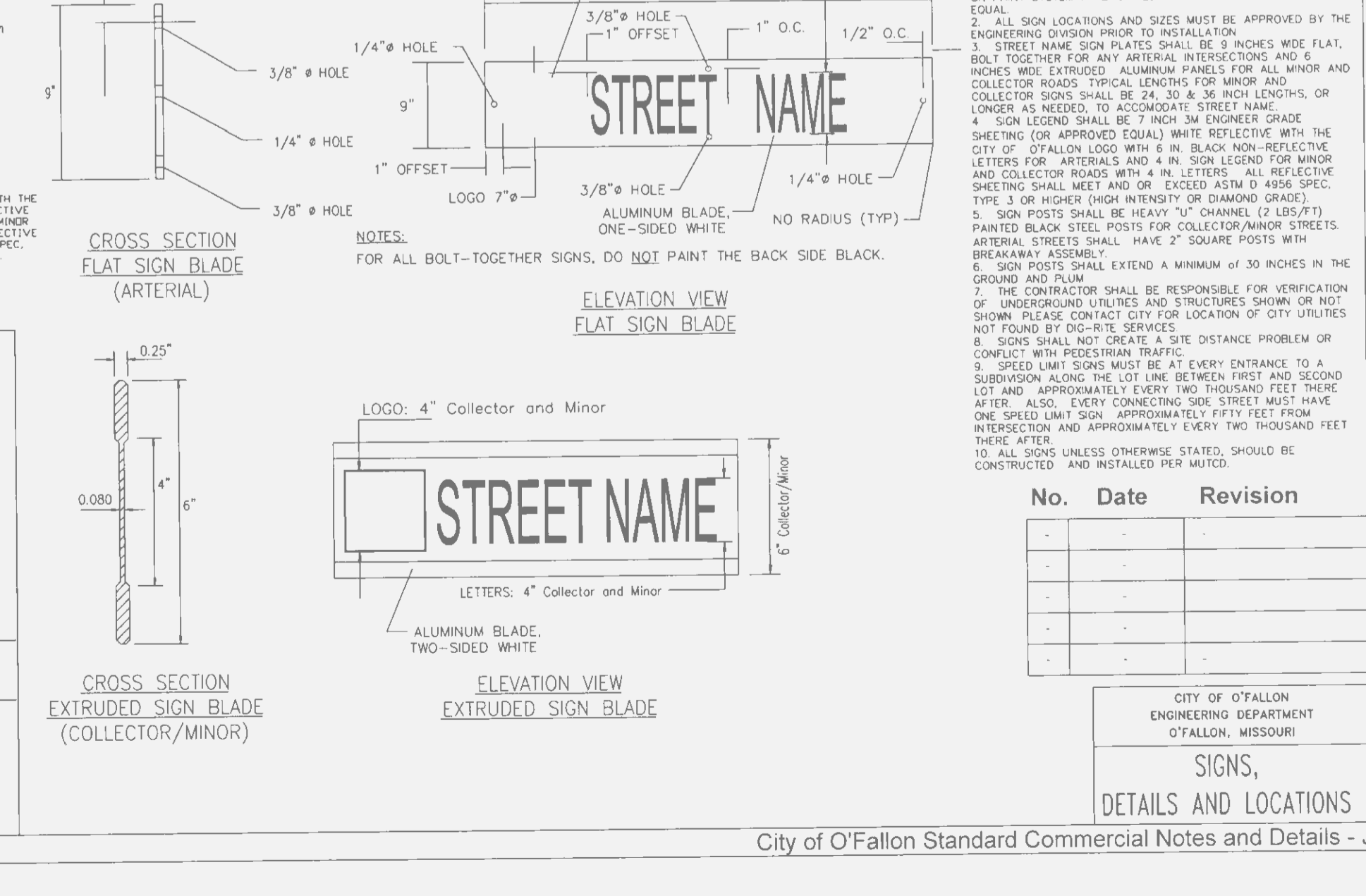
CONCRETE SIDEWALK THROUGH COMMERCIAL ENTRANCES



TREATMENT OF TEMPORARY TERMINATIONS OF ROADWAY PAVEMENT



ARTERIAL SIGNS



CITY OF O'FALLON SIGNAGE

MERCY CLINIC - WINGHAVEN BLVD.
 2223 Technology Dr.
 O'Fallon, Missouri 63366

HEIDEMAN ASSOCIATES, INC.
 A Zube Company
 13545 Barrett Parkway Drive P 314 822 2217
 Suite 200 St. Louis, Missouri 63021 www.zkco.com
 Contact: Dennis Pruitt
 e-mail: ddpruitt@zkc.com

MERCY CLINIC
 NO. E-2000-61862
 MICHAEL J. KELLY
 ENGINEER

MercyT
 SWMS JOB NUMBER
 1510-153209-0521
 DATE: 2012-10-05
 SCALE: NOTED

TEA PROPERTIES MISSOURI, LLC
 600 WASHINGTON AVENUE, 15TH FLOOR
 ST. LOUIS, MO 63101-1313
 CONTACT: ELIZABETH A. MURPHY, CIO SANDBERG
 PHOENIX & VON GONTARD, P.C.
 PHONE: (314) 446-4262
 FAX: (314) 241-7604
 E-MAIL: emurphy@sandbergphoenix.com

City Pavement Details
 P+Z No. 983162
 Approved Sept. 6, 2012
 Page No. C12