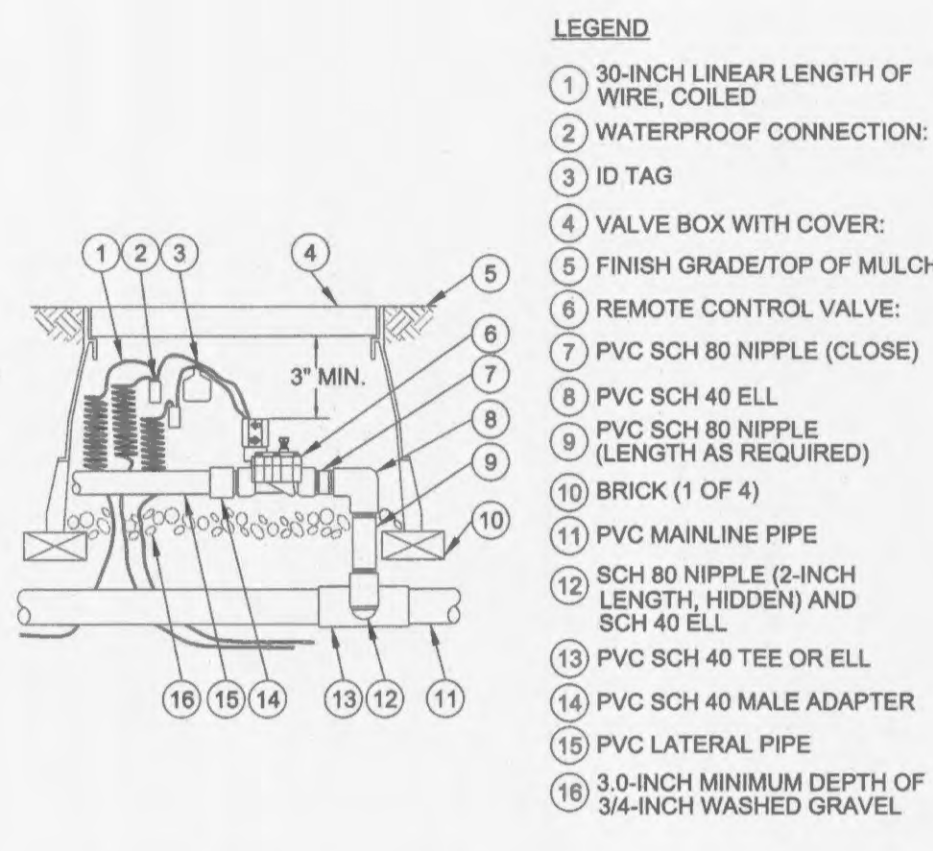


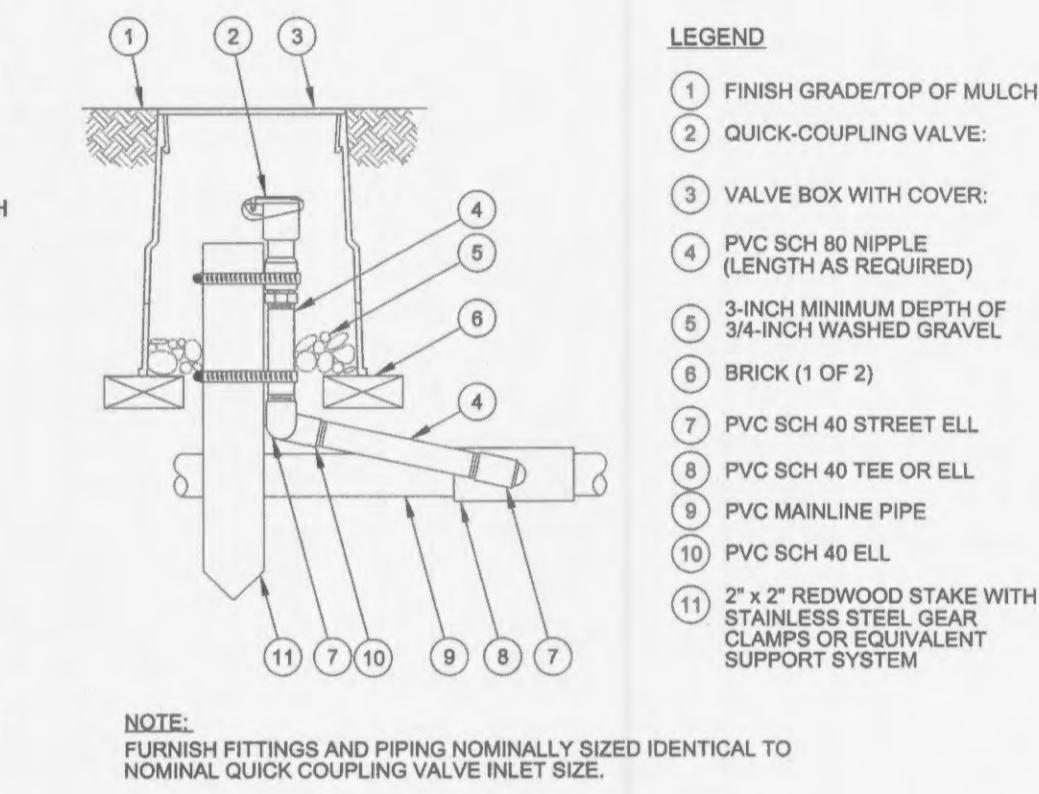
A MODULAR CONTROLLER SYSTEM (INDOOR)
SCALE: N.T.S.



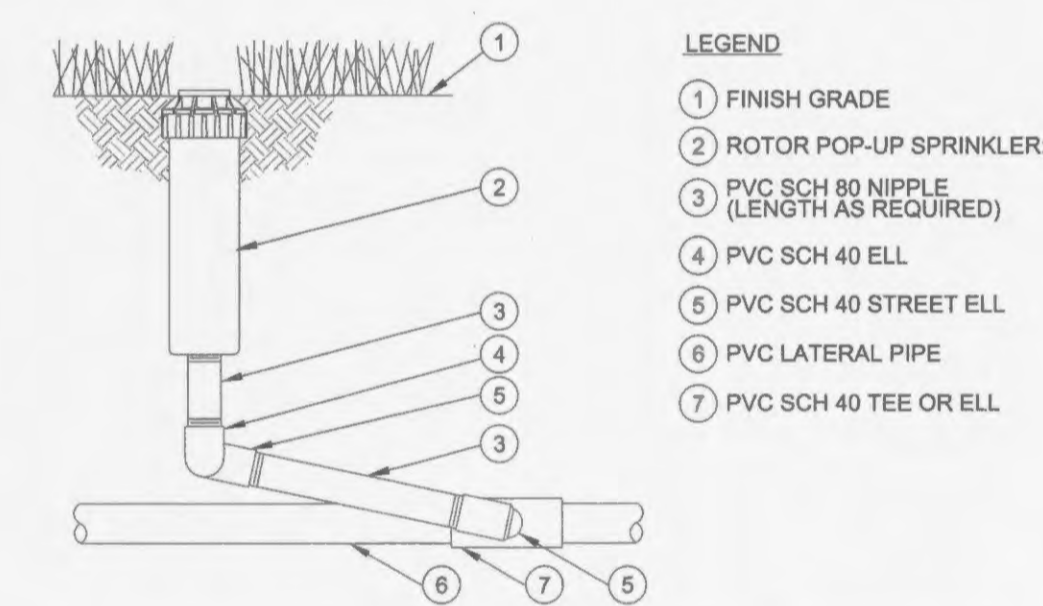
B DRIP ZONE KIT IN SQUARE VALVE BOX
SCALE: N.T.S.



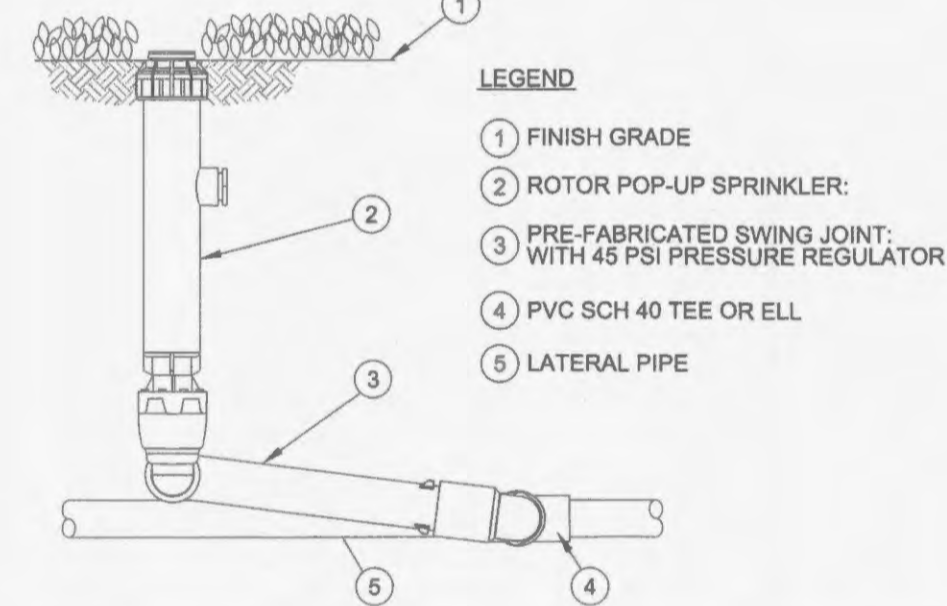
C ELECTRIC REMOTE-CONTROL VALVE
SCALE: N.T.S.



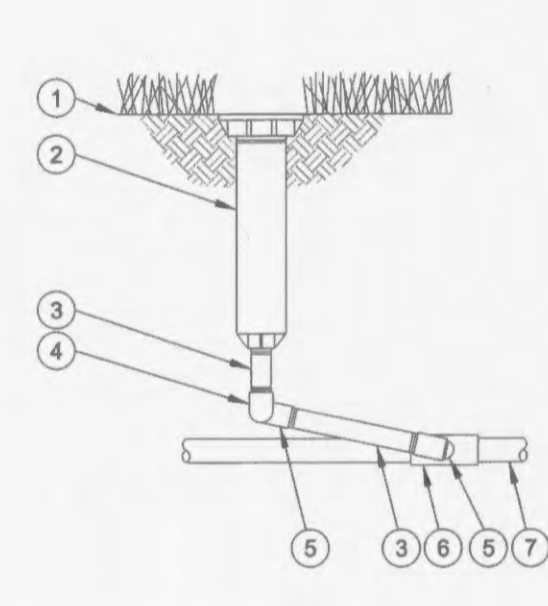
D QUICK COUPLING VALVE
SCALE: N.T.S.



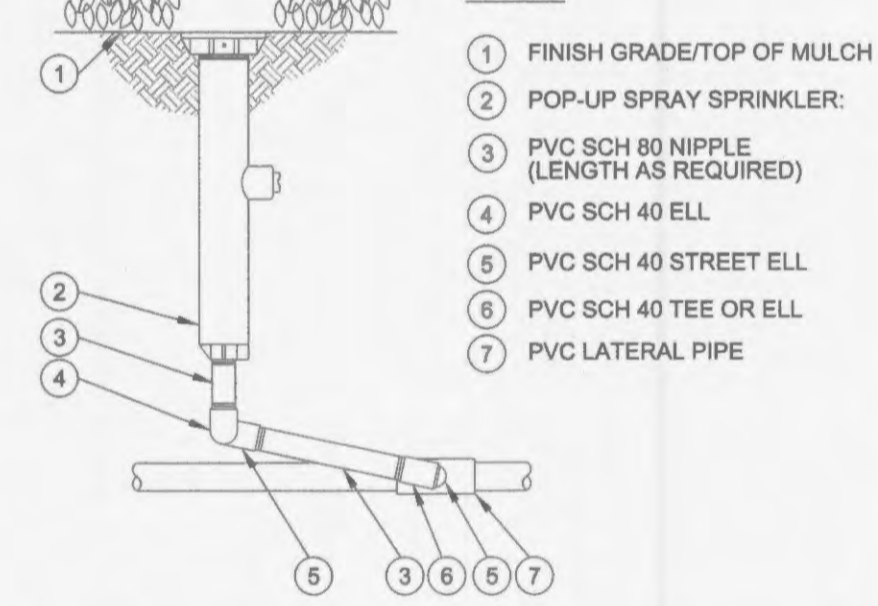
E ROTOR POP-UP SPRINKLER WITH SWING JOINT
SCALE: N.T.S.



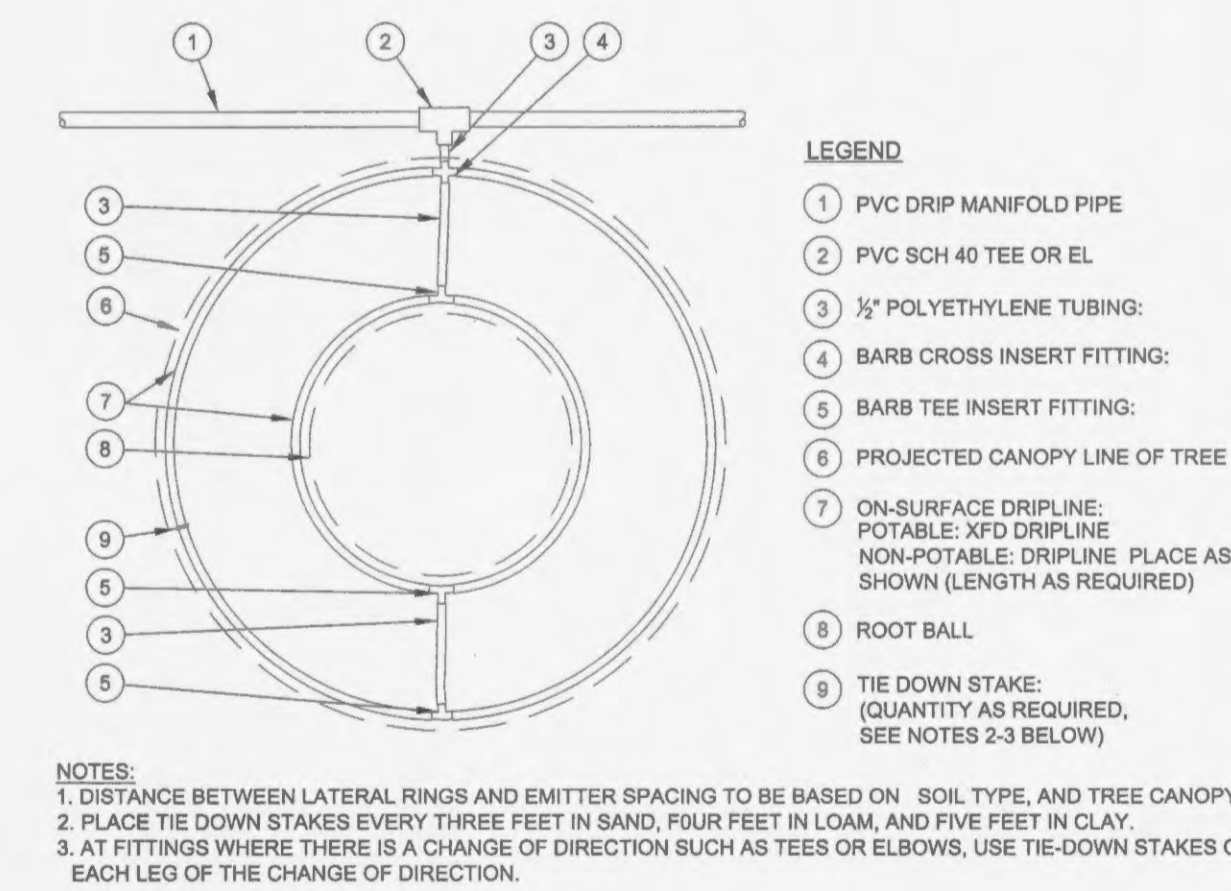
F ROTOR POP-UP SPRINKLER WITH SWING JOINT
SCALE: N.T.S.



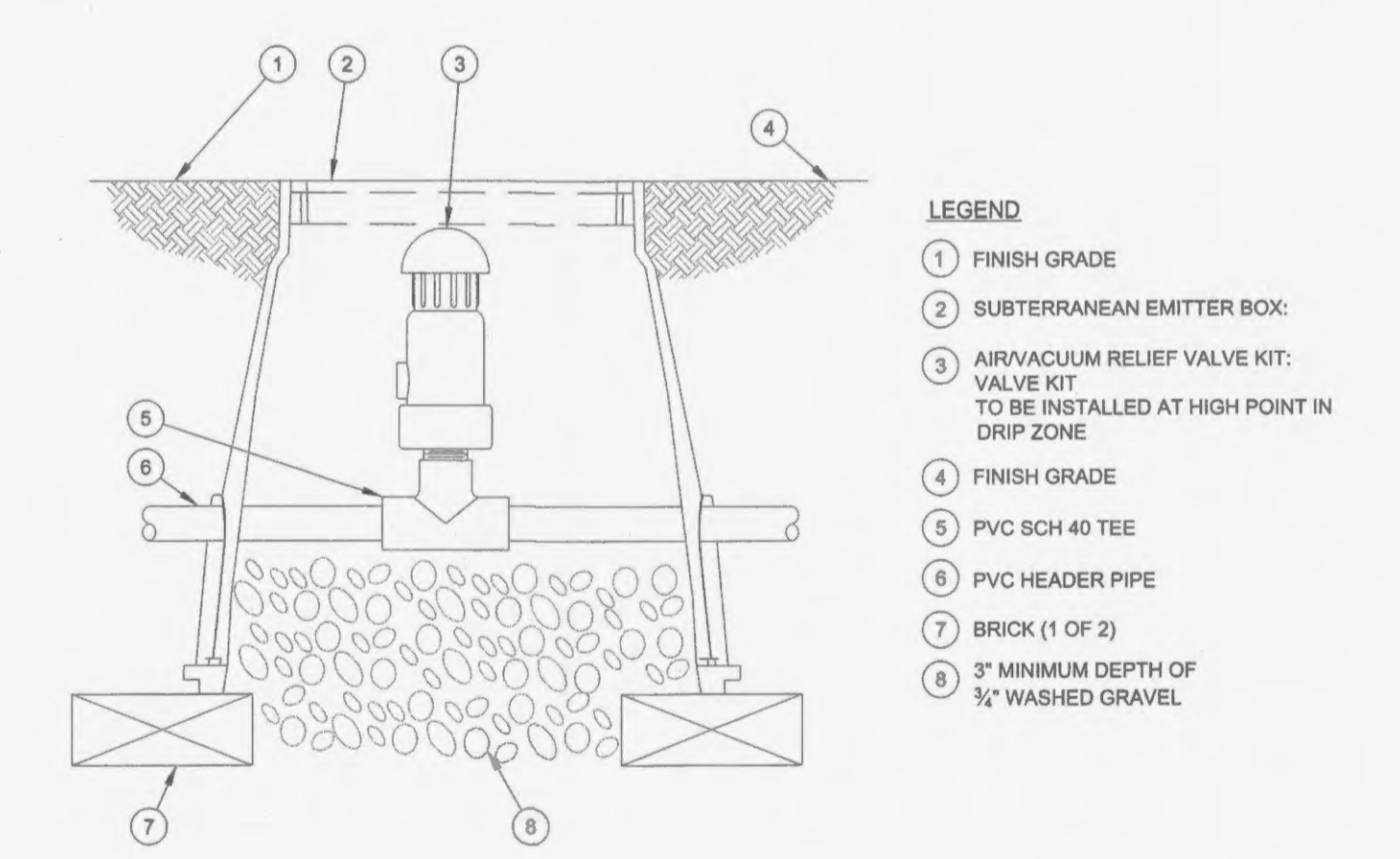
G POP-UP SPRAY SPRINKLER WITH SWING JOINT
SCALE: N.T.S.



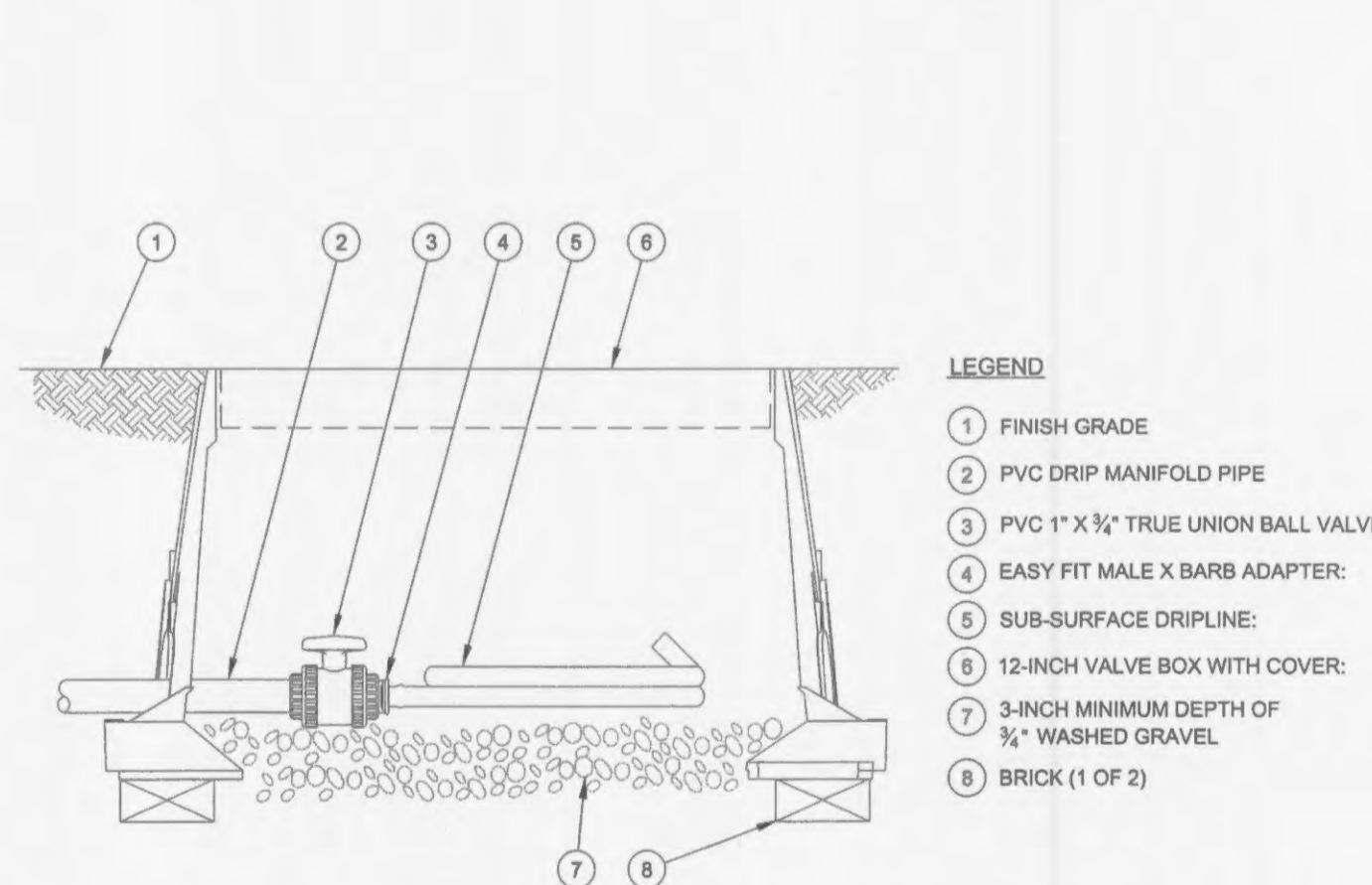
H POP-UP SPRAY SPRINKLER WITH SWING JOINT
SCALE: N.T.S.



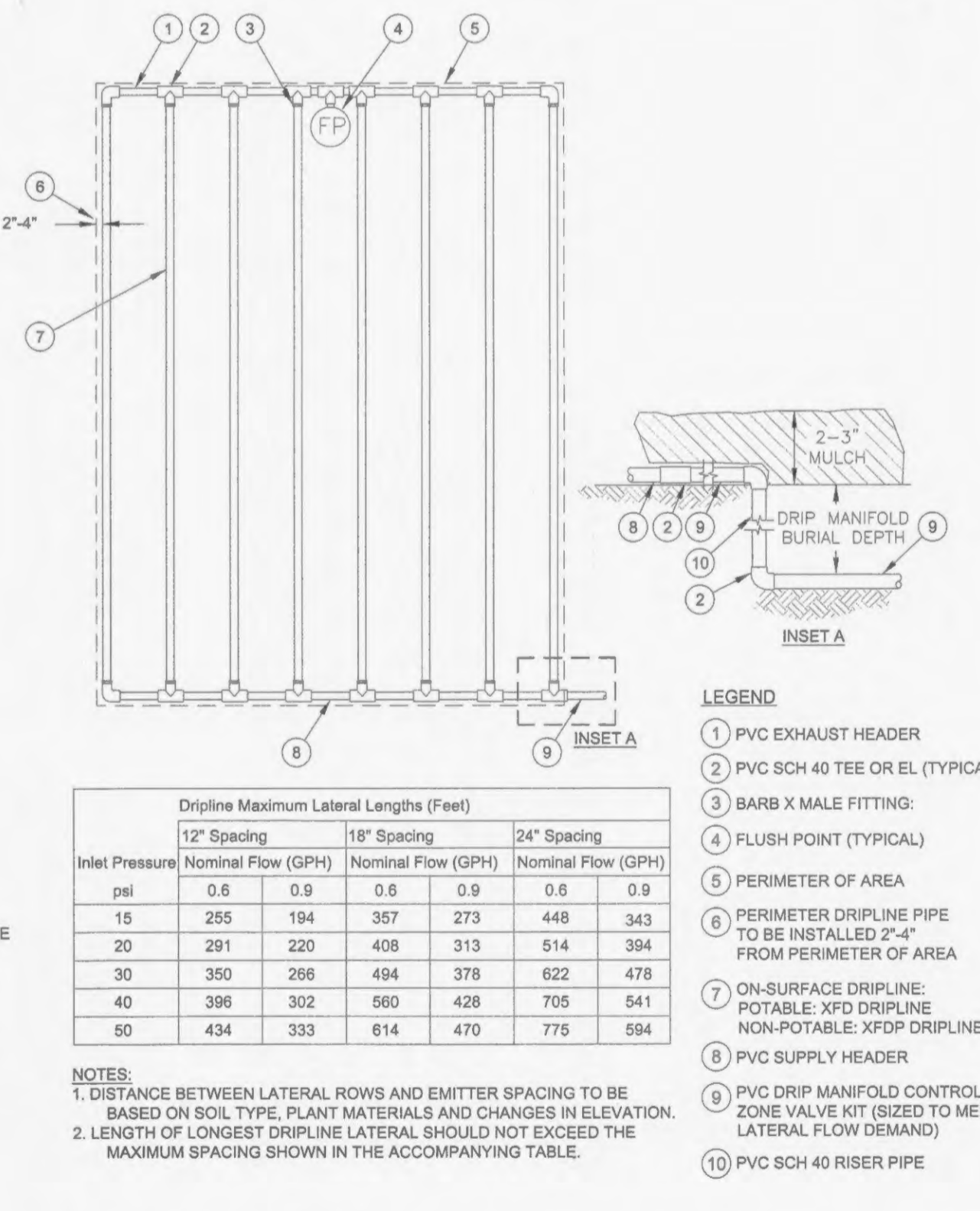
I ON-SURFACE DRIPLINE AROUND TREE
SCALE: N.T.S.



J SUB-SURFACE DRIPLINE AIR VACUUM RELIEF VALVE KIT IN PVC HEADER
SCALE: N.T.S.



K SUB-SURFACE DRIPLINE FLUSH POINT WITH BALL VALVE
SCALE: N.T.S.



L ON-SURFACE DRIPLINE END FEED LAYOUT
SCALE: N.T.S.

Inlet Pressure	12' Spacing			18' Spacing			24' Spacing		
	Nominal Flow (GPH)	Nominal Flow (GPH)	Nominal Flow (GPH)	Nominal Flow (GPH)	Nominal Flow (GPH)	Nominal Flow (GPH)	Nominal Flow (GPH)	Nominal Flow (GPH)	Nominal Flow (GPH)
15	255	194	357	273	448	343			
20	291	220	408	313	514	394			
30	350	266	494	378	622	478			
40	396	302	560	428	705	541			
50	434	333	614	470	775	594			

NOTES:
1. DISTANCE BETWEEN LATERAL ROWS AND EMITTER SPACING TO BE BASED ON SOIL TYPE, PLANT MATERIALS AND CHANGES IN ELEVATION.
2. LENGTH OF LONGEST DRIPLINE LATERAL SHOULD NOT EXCEED THE MAXIMUM SPACING SHOWN IN THE ACCOMPANYING TABLE.

No.	Date	Revision
-	10/5/12	Design Development
-	-	-
-	-	-
-	-	-

GENERAL IRRIGATION NOTES:

- SEE IRRIGATION SPECIFICATIONS FOR ADDITIONAL INFORMATION.
- IT IS THE RESPONSIBILITY OF THE IRRIGATION CONTRACTOR TO FAMILIARIZE HIMSELF WITH ALL GRADE DIFFERENCES, LOCATION OF WALLS, RETAINING WALLS, ETC. HE SHALL COORDINATE HIS WORK WITH THE GENERAL CONTRACTOR AND OTHER SUB-CONTRACTORS FOR THE LOCATION OF PIPE SLEEVES THROUGH WALLS, UNDER ROADWAYS, ETC.
- REFER TO THE GENERAL CONTRACTOR FOR ALL GENERAL CONDITIONS AND PROJECT REQUIREMENTS.
- IRRIGATION CONTRACTOR SHALL COMPLY WITH ALL LOCAL, STATE AND FEDERAL CODES AND REQUIRED INSPECTIONS.
- THE IRRIGATION CONTRACTOR SHALL BE RESPONSIBLE FOR COORDINATION OF IRRIGATION DESIGN WITH LANDSCAPE AND PAVING PLANS. INSTALLATION TO INCLUDE MAINLINE ISOLATION VALVES TO ZONE THE MAINLINE.
- DETERMINE LOCATIONS OF ALL UNDERGROUND UTILITIES AND PERFORM WORK IN AN APPROPRIATE MANNER TO AVOID ANY DAMAGE. HAND EXCAVATE WHERE REQUIRED.
- EXACT LOCATION OF CONTROLLERS, PUMPS (IF NEEDED), AND ANY OTHER EQUIPMENT SHALL BE COORDINATED WITH THE GENERAL CONTRACTOR AND OWNER'S REPRESENTATIVE.
- THE IRRIGATION CONTRACTOR SHALL VERIFY WATER PRESSURE PRIOR TO CONSTRUCTION. REPORT ANY DIFFERENCE BETWEEN THE WATER PRESSURE READING AT THE POINT OF CONNECTION AND THE DESIGN PRESSURE TO THE OWNER'S REPRESENTATIVE. IN THE EVENT PRESSURE DIFFERENCES ARE NOT REPORTED PRIOR TO START OF CONSTRUCTION, THE IRRIGATION CONTRACTOR SHALL ASSUME FULL RESPONSIBILITY FOR ANY REVISIONS NECESSARY.
- IRRIGATION SYSTEM SHALL BE RAINBIRD OR TORO OR APPROVED EQUAL. ANY OTHER SYSTEM MUST HAVE APPROVAL FROM LANDSCAPE ARCHITECT AND OWNER'S REPRESENTATIVE.
- SYSTEM SHOULD BE DESIGNED FOR 100 GPM @ 75 PSI. CONTRACTOR TO FIELD VERIFY ACTUAL CONDITIONS. LOCATION OF CONTROLLERS AND POINT OF CONNECTION IS TO BE COORDINATED WITH IRRIGATION PLAN. OBJECT OF HEAD SPACING IS TO ACQUIRE HEAD TO HEAD COVERAGE AND MINIMIZE OVER SPRAY ONTO WALKS AND BUILDINGS.
- A RAIN SENSOR SHALL BE CONNECTED TO THE IRRIGATION CONTROLLER OUT OF PUBLIC VIEW.
- CONTRACTOR TO PROVIDE IRRIGATION SHOP DRAWINGS IN CAD FORMAT FOR LANDSCAPE ARCHITECT AND OWNER'S REPRESENTATIVE TO REVIEW AND APPROVE.
- CONTRACTOR TO PROVIDE MODIFICATION TO SHOP DRAWINGS FOR AS-BUILT CONDITIONS.
- CONTRACTOR SHALL SUBMIT MANUFACTURER'S LITERATURE, DESIGN, AND INSTALLATION PROCEDURES AND DETAILS FOR IRRIGATION SYSTEM.
- ALL PLANT MATERIAL SHALL BE AUTOMATICALLY IRRIGATED AS INDICATED ON THIS PLAN AND AS PER THE SPECIFICATIONS.
- IRRIGATION SHALL BE ZONED APPROPRIATELY (SUNNY VS. SHADED AREAS, HERBACEOUS VS. LAWN AREAS, SLOPED VS. FLAT AREAS) AND USING APPROPRIATE HEAD TYPES.
- EACH TREE SHALL GET A DRIP RING.
- SHRUB MASSES SHALL GET A DRIP DISTRIBUTION ZONE (1 EMITTER PER PLANT).
- NATIVE PLANTS SHALL GET HIGH POP-UP SPRAYS.
- ALL DRIP ZONES ARE TO HAVE 1 CY OF DRAINAGE GRAVEL AT THE LOW POINT TO ACT AS A SUMP.
- INSTALL ONE (1) QUICK COUPLER EVERY 200' OF MAINLINE PIPING AND AT THE ENDS OF DEAD END RUNS OF MAINLINE. CONTRACTOR TO DETERMINE LOCATION OF ALL BLOWOUTS AND DRAINS.
- THE IRRIGATION CONTRACTOR IS RESPONSIBLE FOR THE INSTALLATION OF CONTROL WIRES. ALL WIRING TO BE DIRECT BURIAL IN THE SAME TRENCH WITH MAINS OR IN CONDUIT WHEN INSTALLED ABOVE GROUND.
- THE IRRIGATION CONTRACTOR SHALL BE RESPONSIBLE FOR THE INSTALLATION OF APPROPRIATELY SIZED CIRCUIT SLEEVES UNDER ALL PAVED AREAS WITHOUT DESTRUCTION OF PAVING.
- WHENEVER POSSIBLE, INSTALL PIPING AND 24 VOLT CONTROL WIRES IN THE SAME TRENCHES AND IN ACCORDANCE WITH GOVERNING CODES.
- INSTALL PIPE MATERIALS AND EQUIPMENT USING TEFLON TAPE OR TEFLON PIPE DOPE ON ALL PVC MALE PIPE THREADS, SPRINKLER PIPE JOINTS AND VALVE ASSEMBLIES.
- ALL POP-UP TYPE SPRINKLER HEADS INSTALLED IN SHRUB, GROUNDCOVER, AND PERENNIAL AREAS SHALL BE INSTALLED SO THAT THE TOP OF THE SPRINKLER HEAD IS 1" ABOVE FINISH GRADE.
- ALL SPRINKLER HEADS SHALL BE SET PERPENDICULAR TO FINISH GRADE OF THE AREA TO BE IRRIGATED UNLESS OTHERWISE DESIGNED IN DETAILS.
- THE IRRIGATION CONTRACTOR SHALL ADJUST ALL SPRINKLER HEADS FOR OPTIMUM PERFORMANCE AND TO PREVENT OVERSPRAY ONTO PAVING AND STRUCTURES. THIS SHALL INCLUDE, BUT NOT LIMITED TO, FLOW CONTROL, ADJUSTMENT AND SELECTING THE BEST NOZZLE AND DEGREE OF ARC TO FIT THE SITE CONDITIONS.
- CONTRACTOR SHALL FIELD VERIFY THE EXTEND OF EXISTING IRRIGATION, AND ADJUST LAYOUT TO SUITE THE NEW PLANTING LAYOUT.

MERCY CLINIC - WINGHAVEN BLVD.
O'Fallon, Missouri 63366

S.W.T. DESIGN

7722 BIG BEND BLVD.
SAINT LOUIS, MO 63119
PHONE 314.644.5700
FAX 314.644.6378

DESIGN BUILD LANDSCAPE DESIGN DEVELOPMENT DOCUMENTATION

Mercyfit
SMB# JOB NUMBER: 1510-153209-0521
DATE: 2012-10-05
SCALE: NOTED

TEA PROPERTIES MISSOURI, LLC
NAME: 600 WASHINGTON AVENUE, 15TH FLOOR
ST. LOUIS, MO 63101-1313
CONTACT: ELIZABETH A. MURPHY, C/O SANDBERG PHOENIX & VON GONTARD, P.C.
PHONE: (314) 446-4262
FAX: (314) 241-7604
E-MAIL: emurphy@sandbergphoenix.com

IRRIGATION DETAILS

P+Z No. 9831.62
Approved Sept. 6, 2012
Page No.

Call Before you DIG
TOLL FREE
1-800-344-7483
MISSOURI ONE-CALL SYSTEM INC.
MODOT (314) 340-4100

NOTIFY LANDSCAPE ARCHITECT IMMEDIATELY IN EVENTS OF DISCREPANCIES, OMISSIONS, AND/OR CONFLICTS IN THE DRAWINGS OR SPECIFICATIONS. THE CONTRACTOR IS NOT AUTHORIZED TO SCALE THE DRAWINGS. ALL QUESTIONS IN REFERENCE TO CONTRACT DOCUMENTS SHALL BE IMMEDIATELY DIRECTED TO THE LANDSCAPE ARCHITECT.