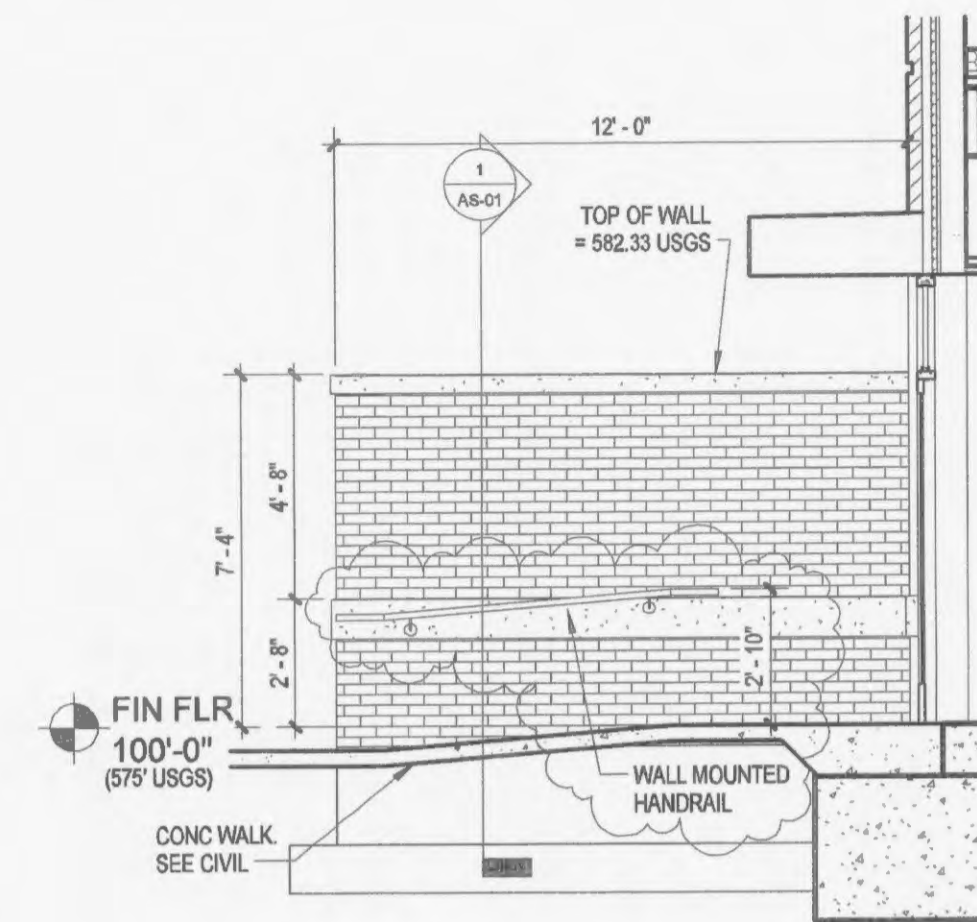
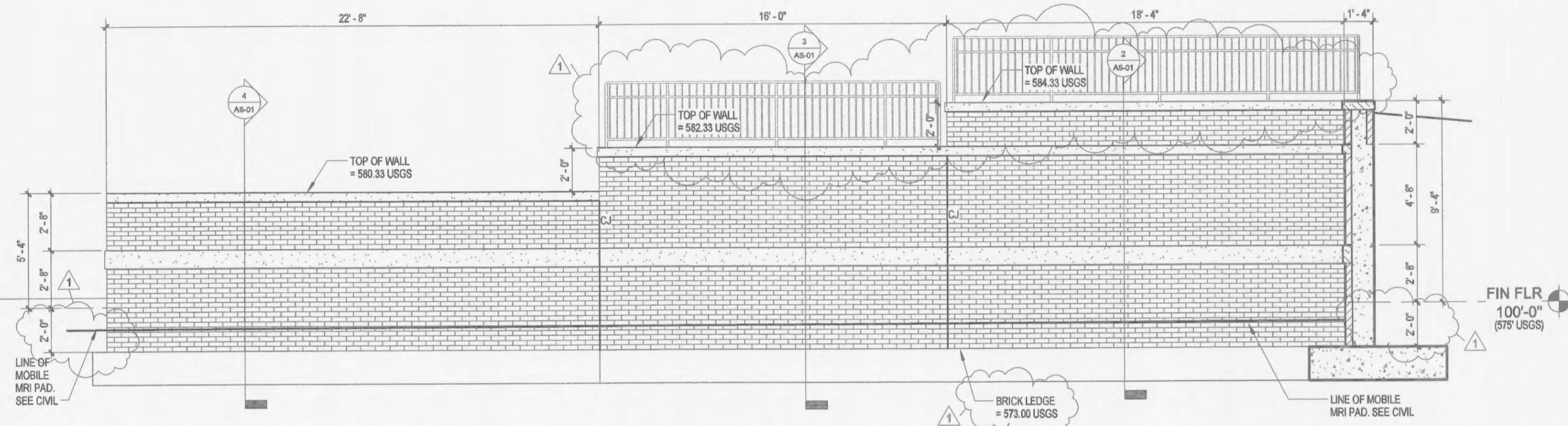


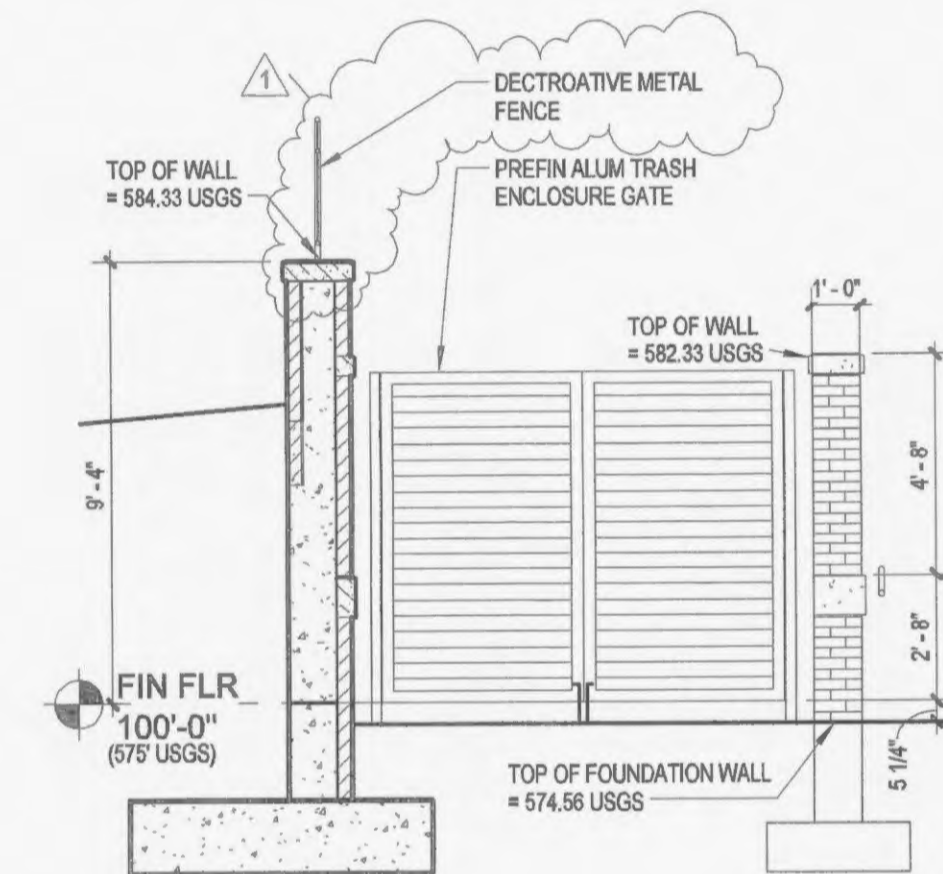
5 SOUTH RETAINING WALL - SOUTH FACE  
 1/4" = 1'-0"



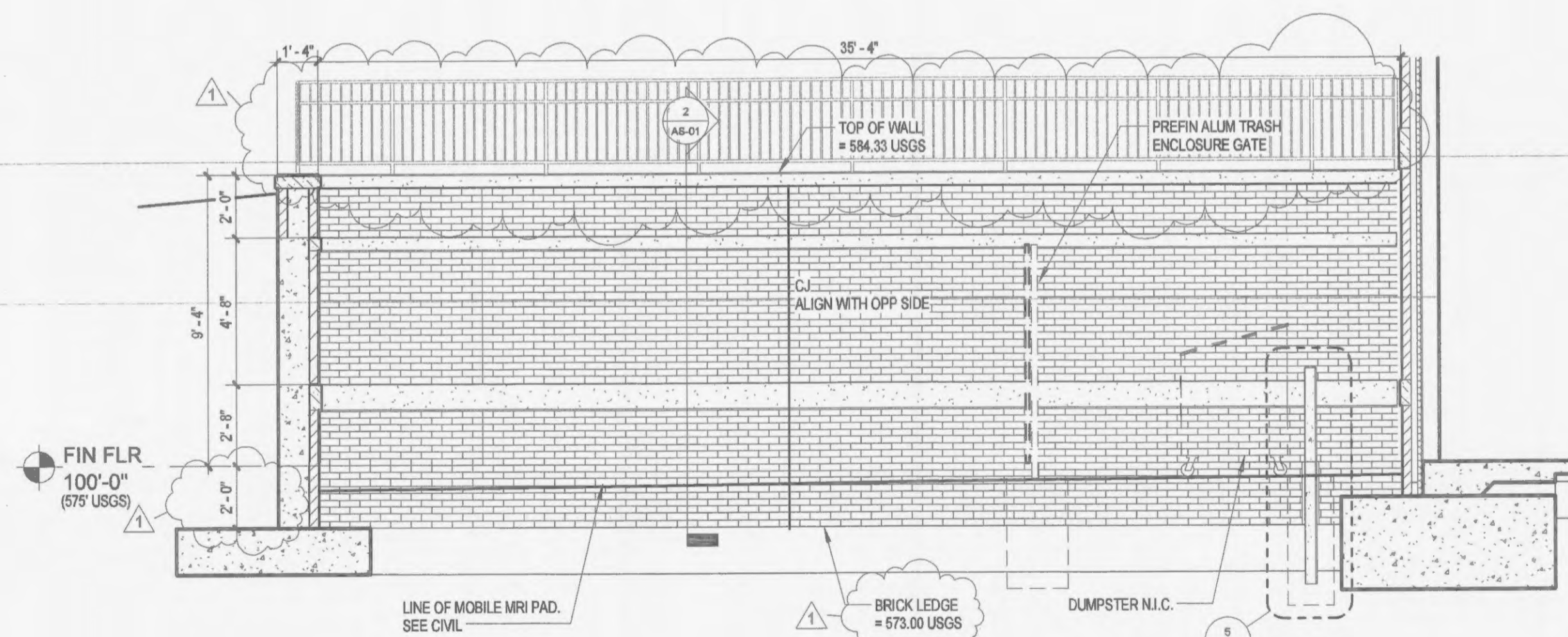
6 DUMPSTER - EAST FACE  
 1/4" = 1'-0"



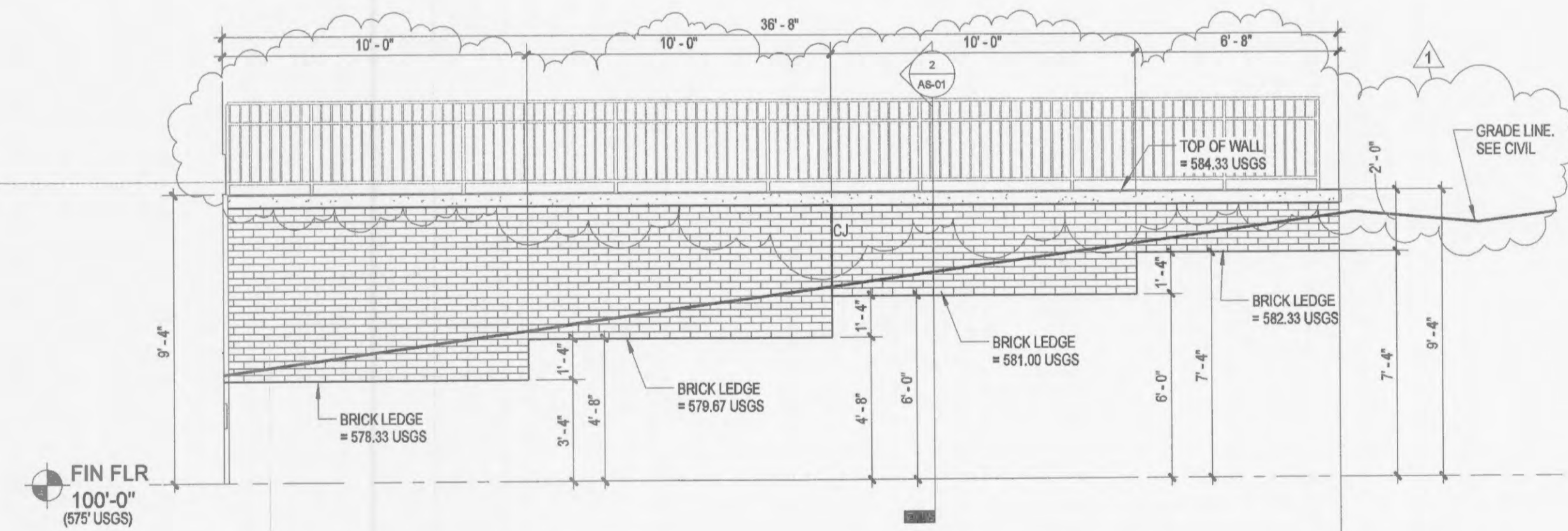
3 SOUTH RETAINING WALL - NORTH FACE  
 1/4" = 1'-0"



4 DUMPSTER - SOUTH FACE  
 1/4" = 1'-0"



1 WEST RETAINING WALL - EAST FACE  
 1/4" = 1'-0"



2 WEST RETAINING WALL - WEST FACE  
 1/4" = 1'-0"

PROJECT TITLE  
**MERCY CLINIC -  
 WINGHAVEN BLVD.**  
 O'Fallon, Missouri  
 63366

Consulting Engineers  
**Archimages**  
 architecture | interiors  
 Archimages, Inc. - Phoenix, Salt Lake, MO 63122  
 10334 95th Ave - #140 - #1314, 866.7477  
 www.archimages-ell.com

R. Gregory Garner  
 MO Architect License No: A-005443  
 Expires: 12/31/12



**Mercy**  
 BUSINESS JOB NUMBER:  
**1510-153209-0521**  
 DATE: 2012-10-05  
 SCALE: NOTED

Developer / Owner  
**NAME:** TEA PROPERTIES MISSOURI, LLC  
**ADDRESS:** 600 WASHINGTON AVENUE, 15TH FLOOR  
**ST. LOUIS, MO 63101-1313**  
**CONTACT:** ELIZABETH A. MURPHY, CIO SANDBERG  
**PHONE:** PHOENIX & VON GONTARD, P.C.  
**PHONE:** (314) 446-4262  
**FAX:** (314) 241-7604  
**E-MAIL:** emurphy@sandbergphoenix.com

P&Z No.  
 9831.62  
 Approved  
 Sept. 6, 2012  
 Page No.

No.	Date	Revision
1	10/19/12	CITY COMMENTS

**AS-02**