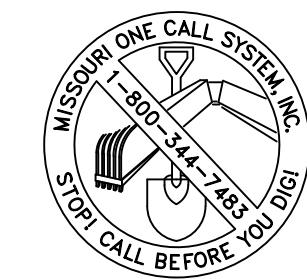


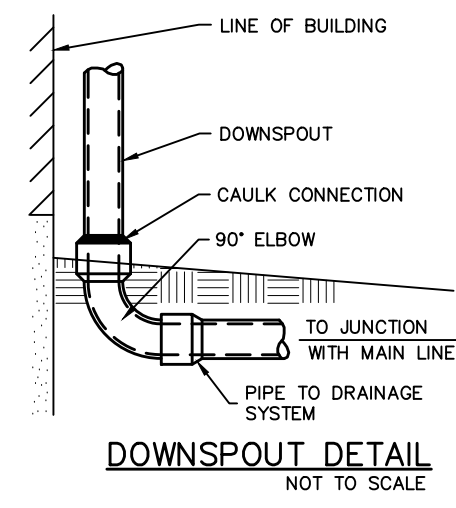
(PRIVATE)
Storm Sewer Profile
 HORIZONTAL SCALE: 1" = 20'
 VERTICAL SCALE: 1" = 10'
 * STORM SEWERS MAY ALSO BE ADS N-12 OR EQUAL

Upp Str	Low Str	PL	S	Upp FL LN	Low FL LN	PS	Upp ST EL	Depth HY GR	Upp HY EL	Low HY EL	Hydr Grade	FR Head	VEL	VEL Head	Turn Loss	Curve Loss	STR Grade	Int Cap	DR Area	PI	Q	TQ	Pipe Cap	Remarks	
1	GI106	FE105	77	12	519.46	512.00	9.69	525.46	5.86	519.60	513.98	0.00030	0.02	0.84	0.01	0.01	0.00	0.00				0.66	0.66	11.09	15 YR HW=513.98
2	AI104	GI103	144	12	521.00	519.57	0.99	526.64	5.26	521.38	520.57	0.00090	0.13	1.39	0.03	0.03	0.00	0.00				1.09	1.09	3.54	15 YR HW=513.98
3	GI103	FE102	56	12	513.88	512.00	3.02	525.15	11.07	514.08	513.98	0.00160	0.09	1.83	0.05	0.00	0.01	0.00				0.35	1.44	6.19	15 YR HW=513.98
4	OS101	FE100	81	12	510.25	496.00	17.63	514.75	4.24	510.51	497.00	0.00470	0.38	3.09	0.15	0.15	0.00	0.00				2.43	2.43	14.96	ITP=497.00



CALL BEFORE YOU DIG!
 1-800-DIG-RITE

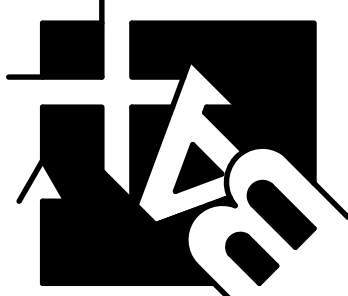
UNDERGROUND UTILITIES HAVE BEEN PLOTTED FROM AVAILABLE INFORMATION AND THEREFORE THEIR LOCATIONS SHALL BE CONSIDERED APPROXIMATE ONLY. THE VERIFICATION OF THE LOCATION OF ALL UNDERGROUND UTILITIES, EITHER SHOWN OR NOT SHOWN ON THESE PLANS SHALL BE THE RESPONSIBILITY OF THE CONTRACTOR, AND SHALL BE LOCATED PRIOR TO ANY GRADING OR CONSTRUCTION OF THE IMPROVEMENTS.



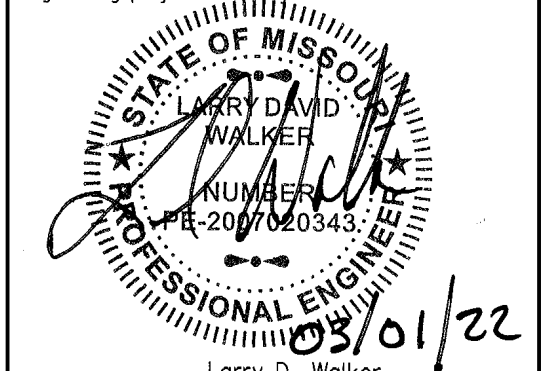
DOWNSPOUT DETAIL
 NOT TO SCALE

PROJECT TITLE:
 CONSTRUCTION PLANS FOR
 Mexico Road Animal Hospital
 1190 Sonderen Street
 O'Fallon, MO 63376

ENGINEERING PLANNING SURVEYING
 221 Point West Blvd.
 St. Charles, MO 63301
 636-928-5662
 FAX 636-928-1718

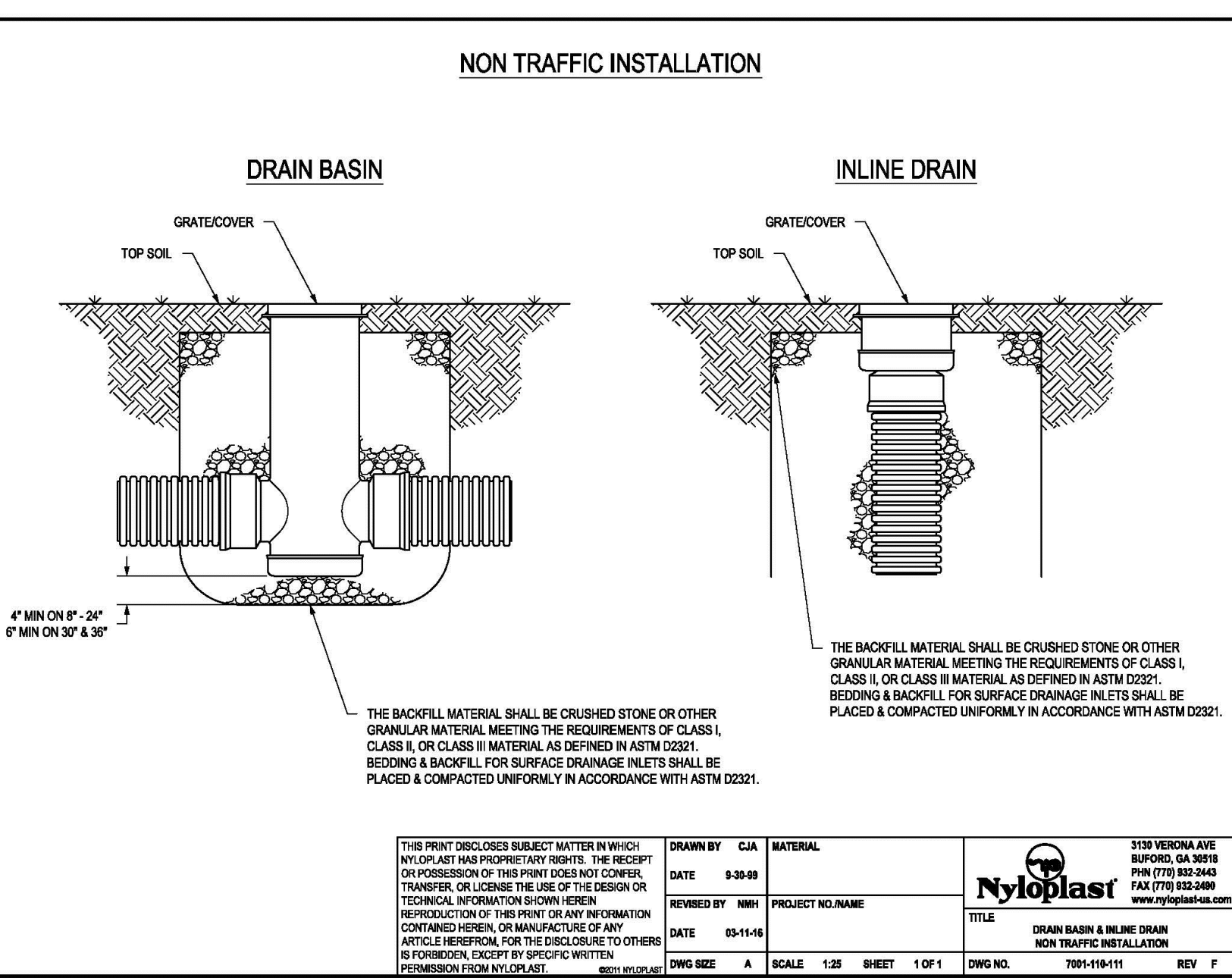


DISCLAIMER OF RESPONSIBILITY
 I hereby specify that the documents intended to be authorized by my seal are limited to this sheet, and I hereby disclaim any responsibility for all other drawings, specifications, estimates, reports or other documents or instruments relating to or intended to be used for any part or parts of the architectural or engineering project or projects.



Lorry D. Walker
 Civil Engineer
 2007020343
 Copyright 2022
 Box Engineering, Inc.
 Authority No. 000955
 All Rights Reserved

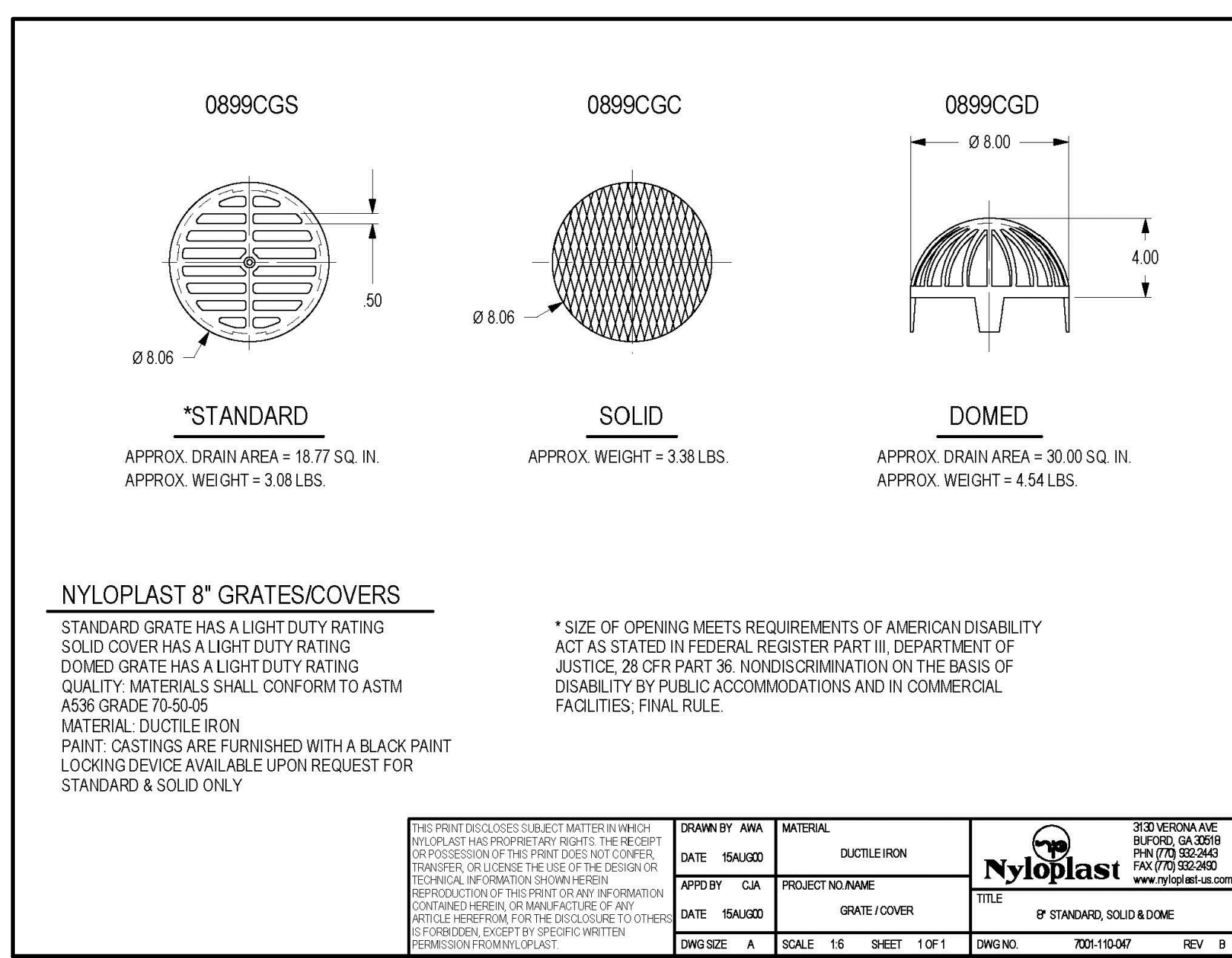
REVISIONS	CITY COMMENTS
01-06-22	CITY COMMENTS
01-06-22	FIRE DIST. COMMENTS
03-01-22	CITY COMMENTS



NON TRAFFIC INSTALLATION

DATE	BY	DESCRIPTION
05-15-16		

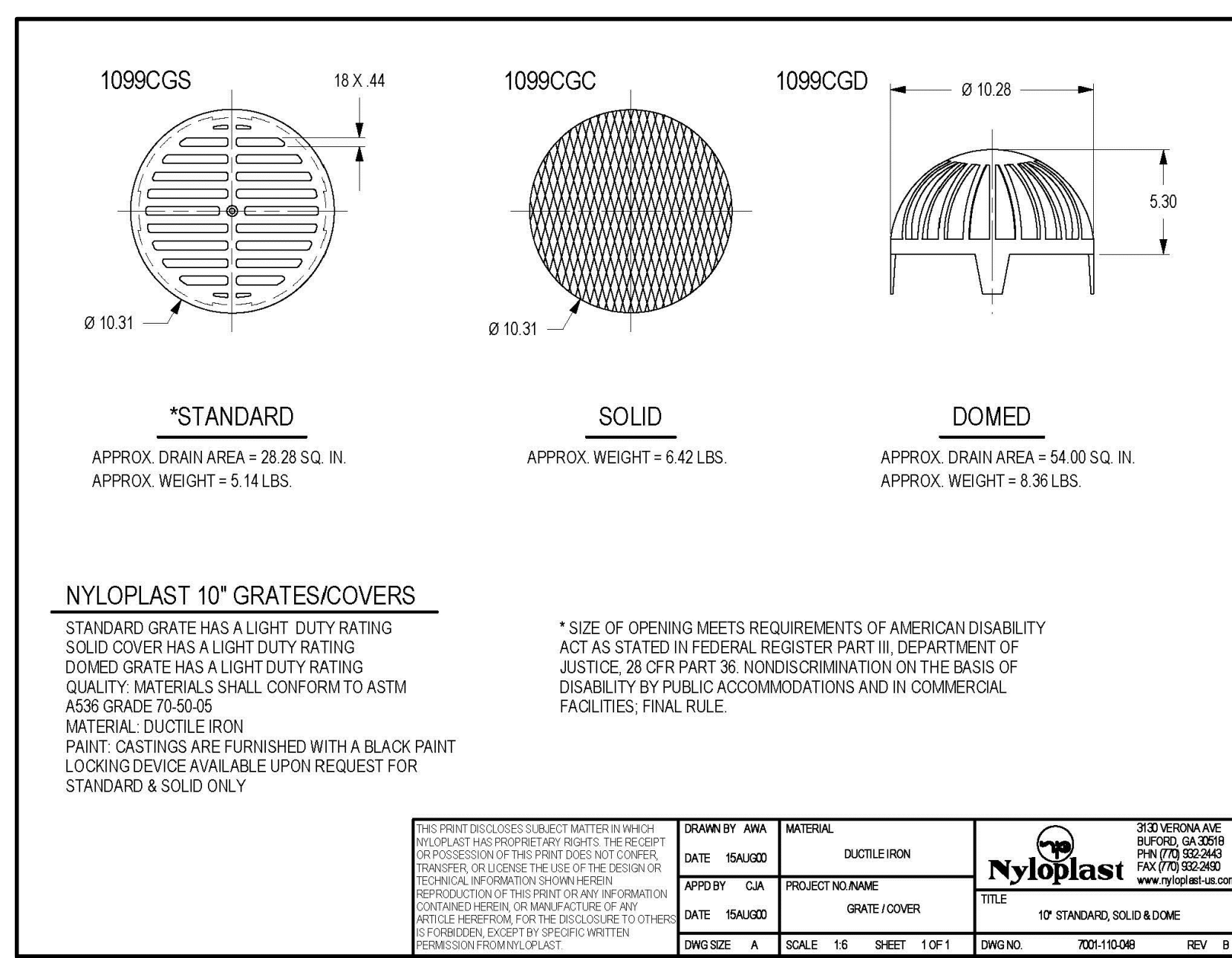
DRAWN BY: CIA DATE: 5-9-16 REVISIONS: PROJECT NO.: DATE: 05-15-16 DWG SIZE: A SCALE: 1/8" = 1'-0" SHEET: 1 OF 1 DWG NO.: 700-110-111 REV: F		3700 VERNON AVE BUFORD, GA 30515 PH (770) 962-2464 FAX (770) 962-2469 www.nyloplast.com
TITLE: DRAIN BASIN & INLINE DRAIN NON TRAFFIC INSTALLATION		250 VERONA AVE BUFORD, GA 30515 PH (770) 962-2464 FAX (770) 962-2469 www.nyloplast.com
APP'D BY: CIA DATE: 5-9-16 DWG SIZE: A SCALE: 1/8" = 1'-0" SHEET: 1 OF 1 DWG NO.: 700-110-097 REV: B		250 VERONA AVE BUFORD, GA 30515 PH (770) 962-2464 FAX (770) 962-2469 www.nyloplast.com
TITLE: 10" STANDARD, SOLID & DOMED		250 VERONA AVE BUFORD, GA 30515 PH (770) 962-2464 FAX (770) 962-2469 www.nyloplast.com



NYLOPLAST 8" GRATES/COVERS
 STANDARD GRATE HAS A LIGHT DUTY RATING
 SOLID COVER HAS A LIGHT DUTY RATING
 DOMED GRATE HAS A LIGHT DUTY RATING
 QUALITY MATERIALS SHALL CONFORM TO ASTM A536 GRADE 70-50-05
 MATERIAL, DUCTILE IRON
 PAINT, CASTINGS ARE FURNISHED WITH A BLACK PAINT
 LOCKING DEVICE AVAILABLE UPON REQUEST FOR STANDARD & SOLID ONLY

* SIZE OF OPENING MEETS REQUIREMENTS OF AMERICAN DISABILITY ACT AS STATED IN FEDERAL REGISTER PART III, DEPARTMENT OF JUSTICE, 28 CFR PART 36, NONDISCRIMINATION ON THE BASIS OF DISABILITY BY PUBLIC ACCOMMODATIONS AND IN COMMERCIAL FACILITIES, FINAL RULE.

DRAWN BY: ANA DATE: 5-9-16 REVISIONS: PROJECT NO.: DATE: 5-9-16 DWG SIZE: A SCALE: 1/8" = 1'-0" SHEET: 1 OF 1 DWG NO.: 700-110-097 REV: B		250 VERONA AVE BUFORD, GA 30515 PH (770) 962-2464 FAX (770) 962-2469 www.nyloplast.com
TITLE: 8" STANDARD, SOLID & DOMED		250 VERONA AVE BUFORD, GA 30515 PH (770) 962-2464 FAX (770) 962-2469 www.nyloplast.com



NYLOPLAST 10" GRATES/COVERS
 STANDARD GRATE HAS A LIGHT DUTY RATING
 SOLID COVER HAS A LIGHT DUTY RATING
 DOMED GRATE HAS A LIGHT DUTY RATING
 QUALITY MATERIALS SHALL CONFORM TO ASTM A536 GRADE 70-50-05
 MATERIAL, DUCTILE IRON
 PAINT, CASTINGS ARE FURNISHED WITH A BLACK PAINT
 LOCKING DEVICE AVAILABLE UPON REQUEST FOR STANDARD & SOLID ONLY

* SIZE OF OPENING MEETS REQUIREMENTS OF AMERICAN DISABILITY ACT AS STATED IN FEDERAL REGISTER PART III, DEPARTMENT OF JUSTICE, 28 CFR PART 36, NONDISCRIMINATION ON THE BASIS OF DISABILITY BY PUBLIC ACCOMMODATIONS AND IN COMMERCIAL FACILITIES, FINAL RULE.

DRAWN BY: ANA DATE: 5-9-16 REVISIONS: PROJECT NO.: DATE: 5-9-16 DWG SIZE: A SCALE: 1/8" = 1'-0" SHEET: 1 OF 1 DWG NO.: 700-110-096 REV: B		250 VERONA AVE BUFORD, GA 30515 PH (770) 962-2464 FAX (770) 962-2469 www.nyloplast.com
TITLE: 10" STANDARD, SOLID & DOMED		250 VERONA AVE BUFORD, GA 30515 PH (770) 962-2464 FAX (770) 962-2469 www.nyloplast.com

ENGINEER SEAL DOES NOT APPLY TO NYLOPLAST DETAILS

Developer / Owner:
 Hoerrig Veterinary Services L.L.C.
 25 Smetana
 Wentzville, MO 63385
 (573) 513-1525

P+Z No. 21-004881
Approved: 07-01-21
City No. #

Page No.
 12 of 15

STORM SEWER PROFILES