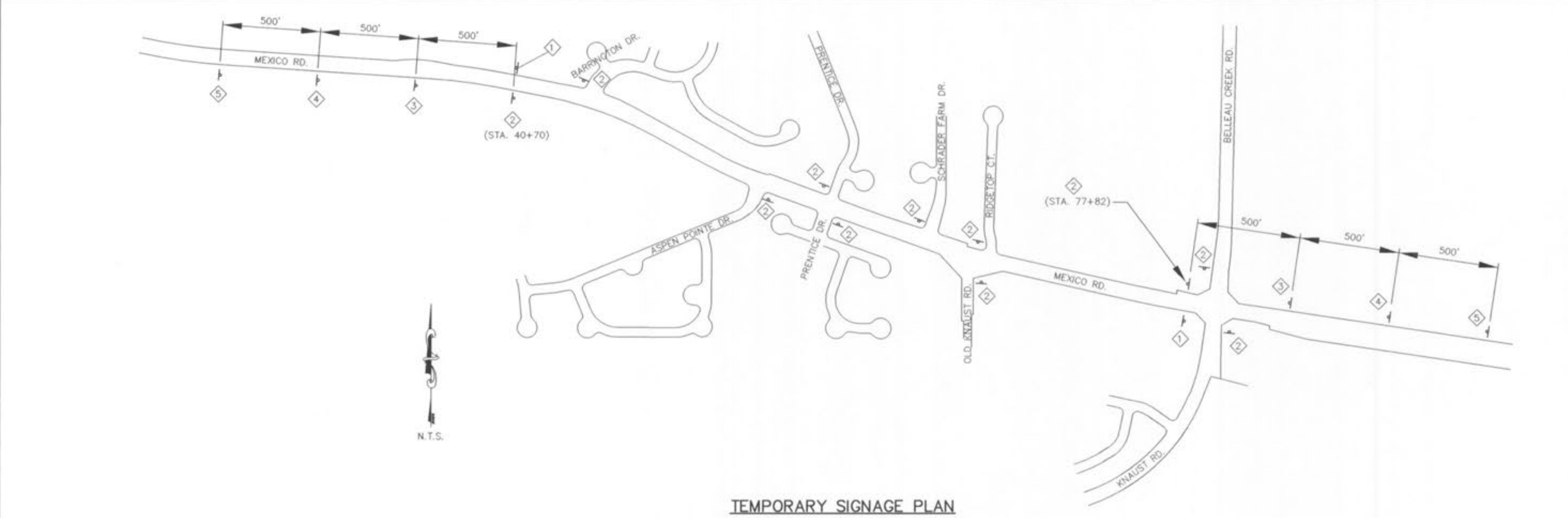
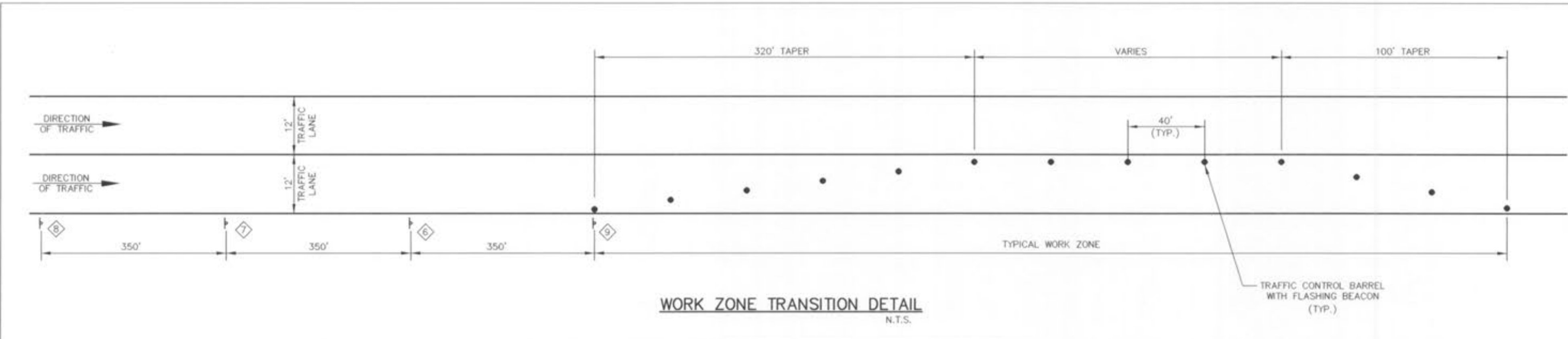
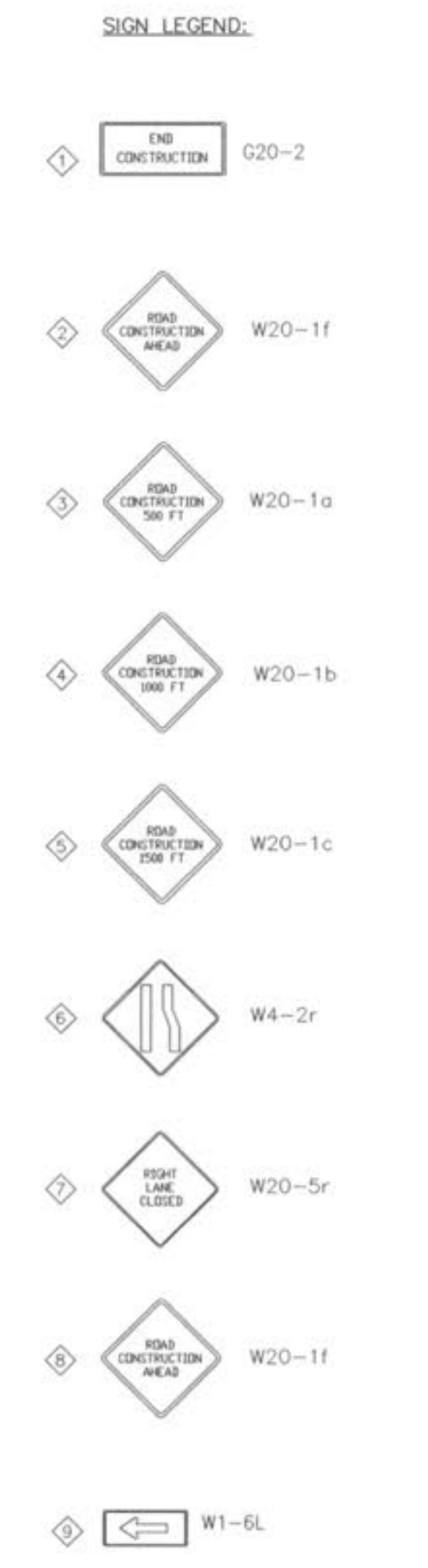
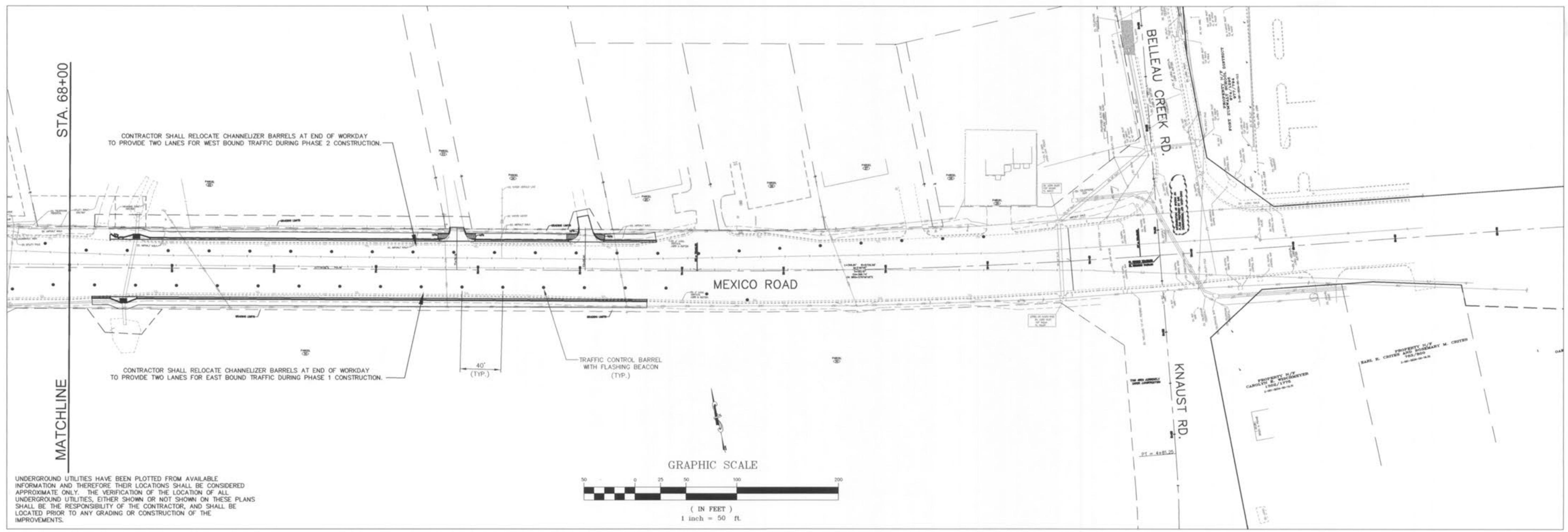




DISCLAIMER OF RESPONSIBILITY  
I HEREBY CERTIFY THAT THE DOCUMENTS REFERRED TO ARE AUTHORIZED BY MY SEAL AND LIMITED TO THIS SHEET, AND I HEREBY DISCLAIM ANY LIABILITY FOR ERRORS OR OMISSIONS IN ANY SPECIFICATIONS, ESTIMATES, REPORTS OR OTHER DOCUMENTS OR INSTRUMENTS RELATING TO OR INTRODUCED TO BE USED FOR ANY PART OR PARTS OF THE ARCHITECTURAL OR ENGINEERING PROJECT OR SURVEY.

STATE OF MISSOURI  
Professional Engineer  
Seal 11-19-03

DESIGNED: EBB  
CHECKED: CEM  
DATE: 11/7/03  
PROJECT NO.: 00-034



- PHASING NOTES:
1. ALL CONSTRUCTION SIGNAGE AND TRAFFIC CONTROL SHALL BE THE RESPONSIBILITY OF THE CONTRACTOR.
  2. TRAFFIC CONTROL PHASING SHALL BE CONSTRUCTED AS SHOWN ON THE PLANS, EXCEPT AS DIRECTED BY ENGINEER.
  3. CONTRACTOR SHALL MAINTAIN VEHICULAR ACCESS TO DRIVE AND ENTRANCES AT ALL TIMES. CONTRACTOR SHALL CONSTRUCT ENTRANCES IN HALVES TO PROVIDE VEHICULAR ACCESS AT ALL TIMES.
  4. TRAFFIC CONTROL BARRELS SHALL HAVE 40 FOOT SPACING, EXCEPT AS SHOWN ON TRAFFIC HANDLING PLANS, OR AS DIRECTED BY ENGINEER.
- LEGEND:
- CHANNELIZER BARRELS WITH FLASHING BEACON
  - ▲ MODOT TYPE II BARRICADE WITH FLASHING BEACON (MODOT 612.10M)
  - △ TEMPORARY SIGN
- PHASE 1 NOTES:
1. PROVIDE ALL NECESSARY TRAFFIC CONTROL DEVICES PER THE LATEST ADDITION OF THE MANUAL ON UNIFORM TRAFFIC CONTROL DEVICES.
  2. CONSTRUCT CONCRETE CURB & GUTTER, RETAINING WALL AND STORM SEWERS ON SOUTH SIDE OF MEXICO ROAD.
  3. CONSTRUCT PRIVATE AND COMMERCIAL ENTRANCES ALONG WITH SUBDIVISIONS ENTRANCES ON THE SOUTH SIDE OF MEXICO ROAD AT:  
STA. 47+24.25 (RT.)  
STA. 53+98.69 (RT.)  
STA. 57+76.98 (RT.)  
STA. 63+21.85 (RT.)
  4. CONSTRUCT ASPHALT WALK ON THE SOUTH SIDE OF MEXICO ROAD.
  5. SAWCUT AND REMOVE EXISTING CONCRETE CURB & GUTTER ON SOUTH SIDE OF MEXICO ROAD.
  6. CONSTRUCT NEW BASE ROCK AND NEW 8" CONCRETE PAVEMENT ON THE SOUTH SIDE OF MEXICO ROAD.
- PHASE 2 NOTES:
1. PROVIDE ALL NECESSARY TRAFFIC CONTROL DEVICES PER THE LATEST ADDITION OF THE MANUAL ON UNIFORM TRAFFIC CONTROL DEVICES.
  2. CONSTRUCT CONCRETE CURB & GUTTER, RETAINING WALLS AND STORM SEWERS ON NORTH SIDE OF MEXICO ROAD.
  3. CONSTRUCT PRIVATE AND COMMERCIAL ENTRANCES ALONG WITH SUBDIVISIONS ENTRANCES ON THE NORTH SIDE OF MEXICO ROAD AT:  
STA. 57+81.39 (LT.)  
STA. 60+37.63 (LT.)  
STA. 71+79.16 (LT.)  
STA. 73+05.00 (LT.)
  4. CONSTRUCT ASPHALT WALK ON THE NORTH SIDE OF MEXICO ROAD.
  5. SAWCUT AND REMOVE EXISTING CONCRETE CURB & GUTTER ON NORTH SIDE OF MEXICO ROAD.
  6. CONSTRUCT NEW BASE ROCK AND NEW 8" CONCRETE PAVEMENT ON THE NORTH SIDE OF MEXICO ROAD.
- PHASE 3 NOTES:
1. PROVIDE ALL NECESSARY TRAFFIC CONTROL DEVICES PER THE LATEST EDITION OF THE MANUAL ON UNIFORM TRAFFIC CONTROL DEVICES.
  2. MILL EXISTING ASPHALT PAVEMENT OF MEXICO ROAD.
  3. CONSTRUCT TYPE "C" ASPHALT OVERLAY.
  4. COMPLETE ALL SIGN RELOCATIONS.