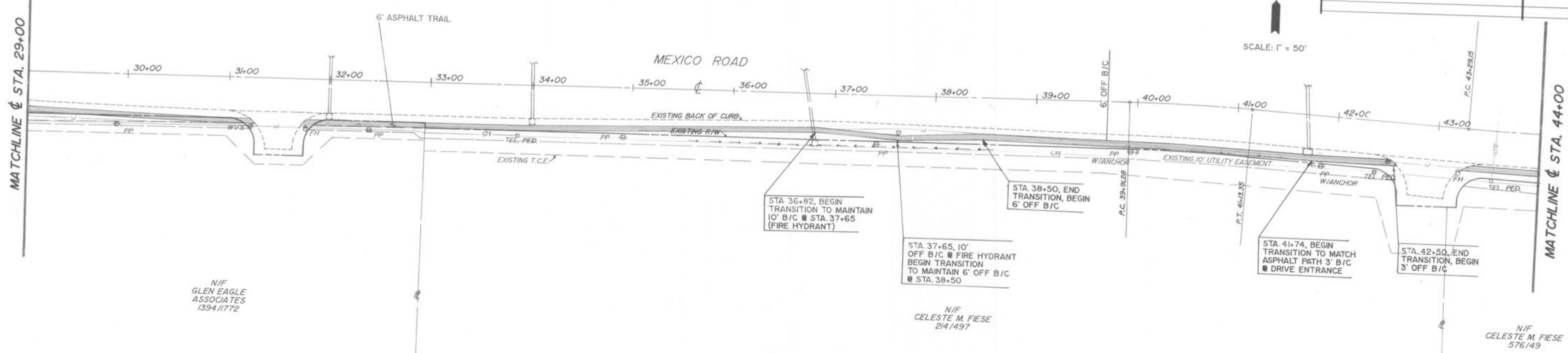
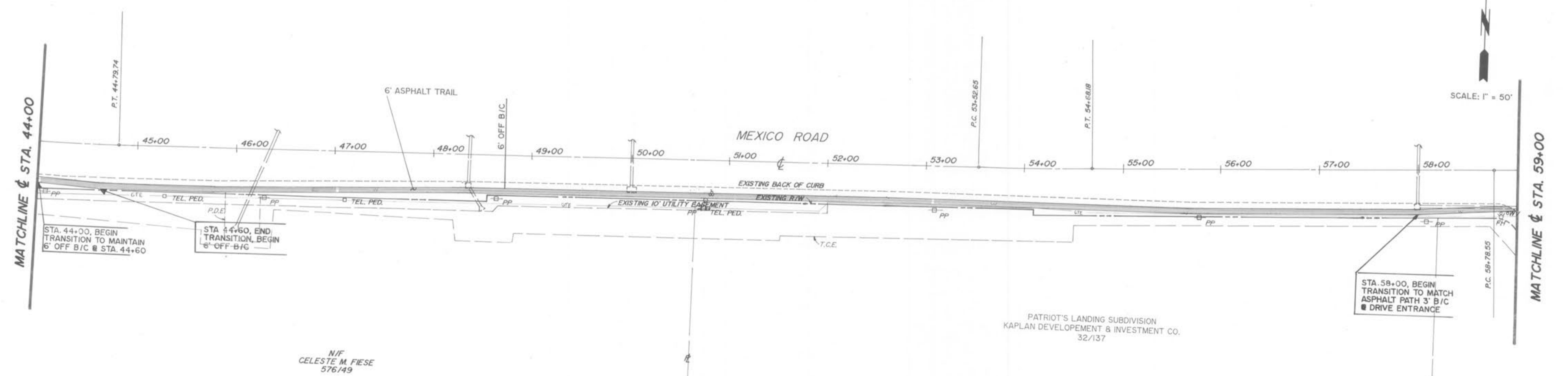


GBA GEORGE BUTLER ASSOCIATES, INC. Engineers / Architects / Landscape Architects / Planners Kansas City, Mo. / Lenexa, Ka. / O'Fallon, Mo. / Ames, Ia. / Oklahoma City, Ok.		DATE: MAY 1996
DESIGN BY: BAH		
DRAWN BY: BAH		
PROJECT NO: 7136.01		
SHEET NO:	3	TOTAL SHEETS: 9
REVISIONS		BY: DATE:



All utility service lines shall be kept in service and protected during construction operations. The drawings indicate the location of known existing utility service lines as could best be determined. However, such locations are not guaranteed and the plans may not show the location of all existing utility service lines. It shall be the Contractor's responsibility to verify and locate all existing utility service lines, and notify the Engineer of any conflicts and discrepancies immediately.



5/24/97