

GBA
 GEORGE BUTLER ASSOCIATES, INC.
 Engineers / Architects / Landscape Architects / Planners
 Kansas City, Mo. / Lenexa, Ks. / O'Fallon, Mo. / Ames, Ia. / Oklahoma City, Ok.

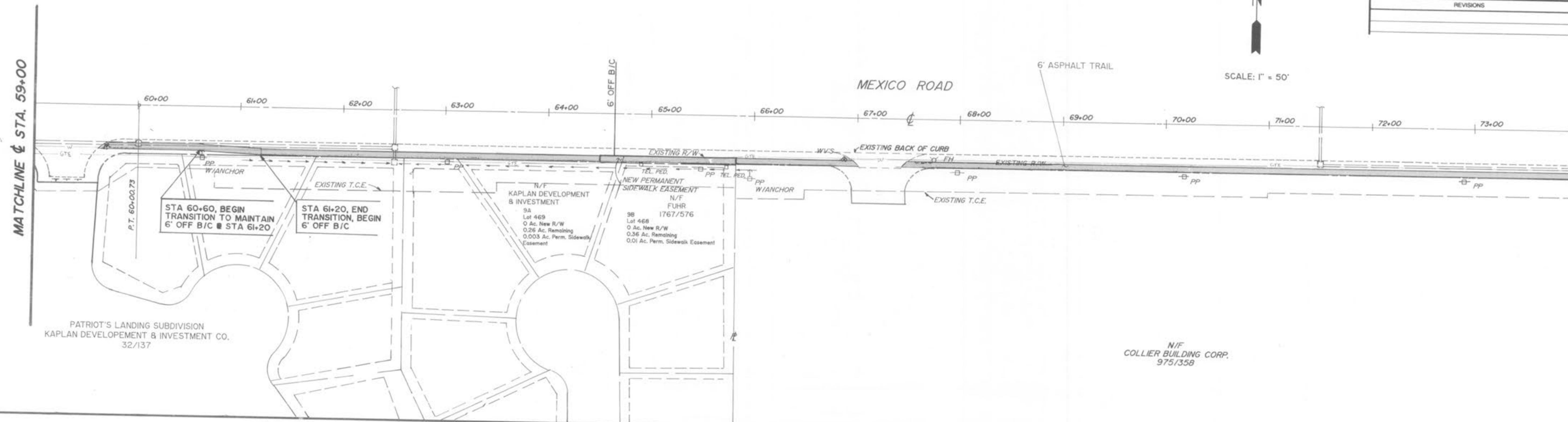
DATE: MAY 1996
 DESIGN BY: BAR-1
 DRAWN BY: BAH
 PROJECT NO: 7136.01
 SHEET NO: 4
 TOTAL SHEETS: 9

MEXICO ROAD PEDESTRIAN TRAIL
 CITY OF O'FALLON, MISSOURI

REVISIONS	BY	DATE

MATCHLINE @ STA. 59+00

MATCHLINE @ STA. 74+00



All utility service lines shall be kept in service and protected during construction operations. The drawings indicate the location of known existing utility service lines as could best be determined. However, such locations are not guaranteed and the plans may not show the location of all existing utility service lines. It shall be the Contractor's responsibility to verify and locate all existing utility service lines, and notify the Engineer of any conflicts and discrepancies immediately.

MATCHLINE @ STA. 74+00

MATCHLINE @ STA. 89+00

