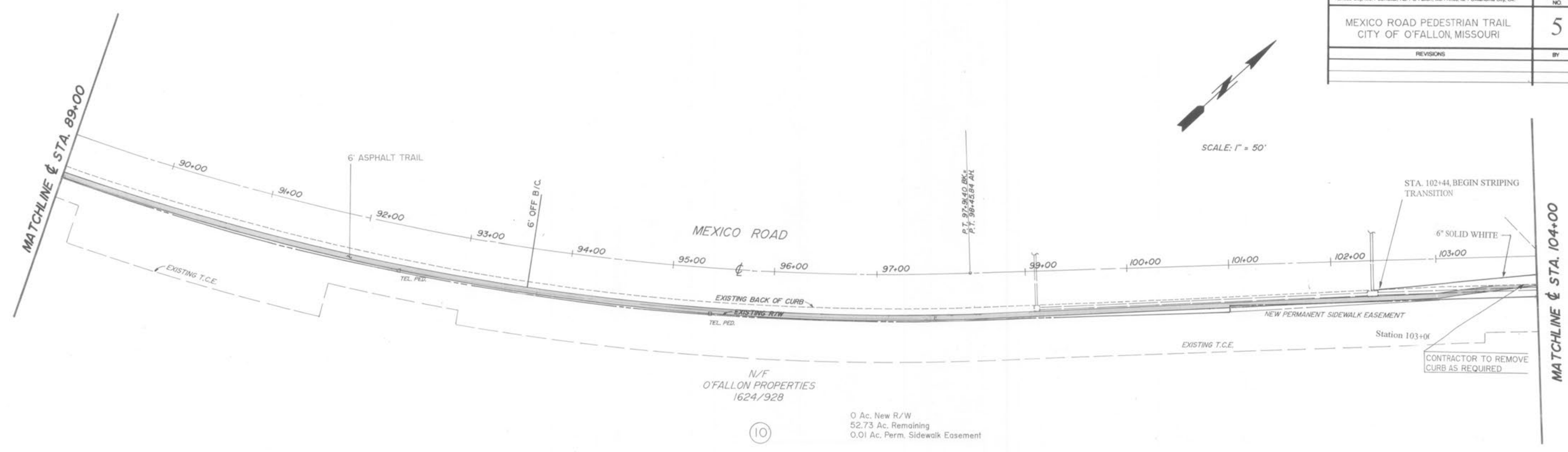
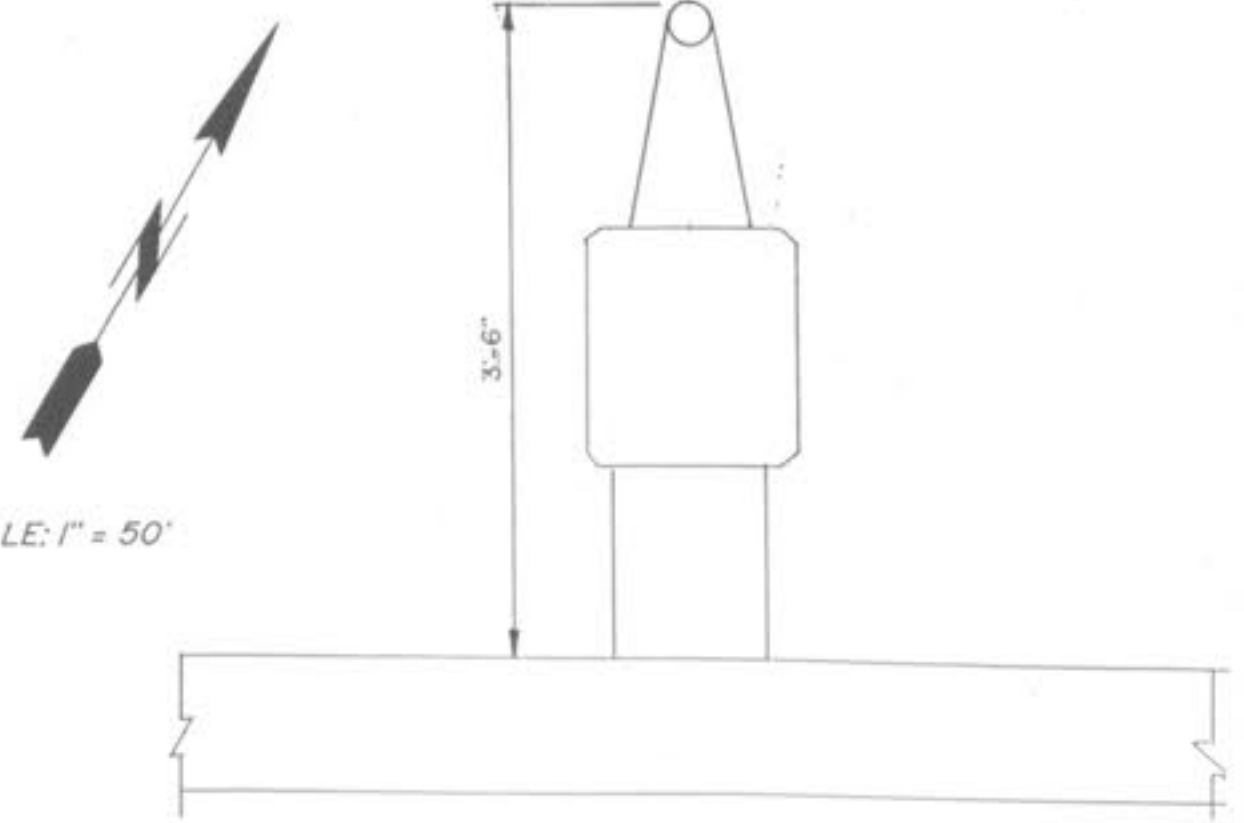
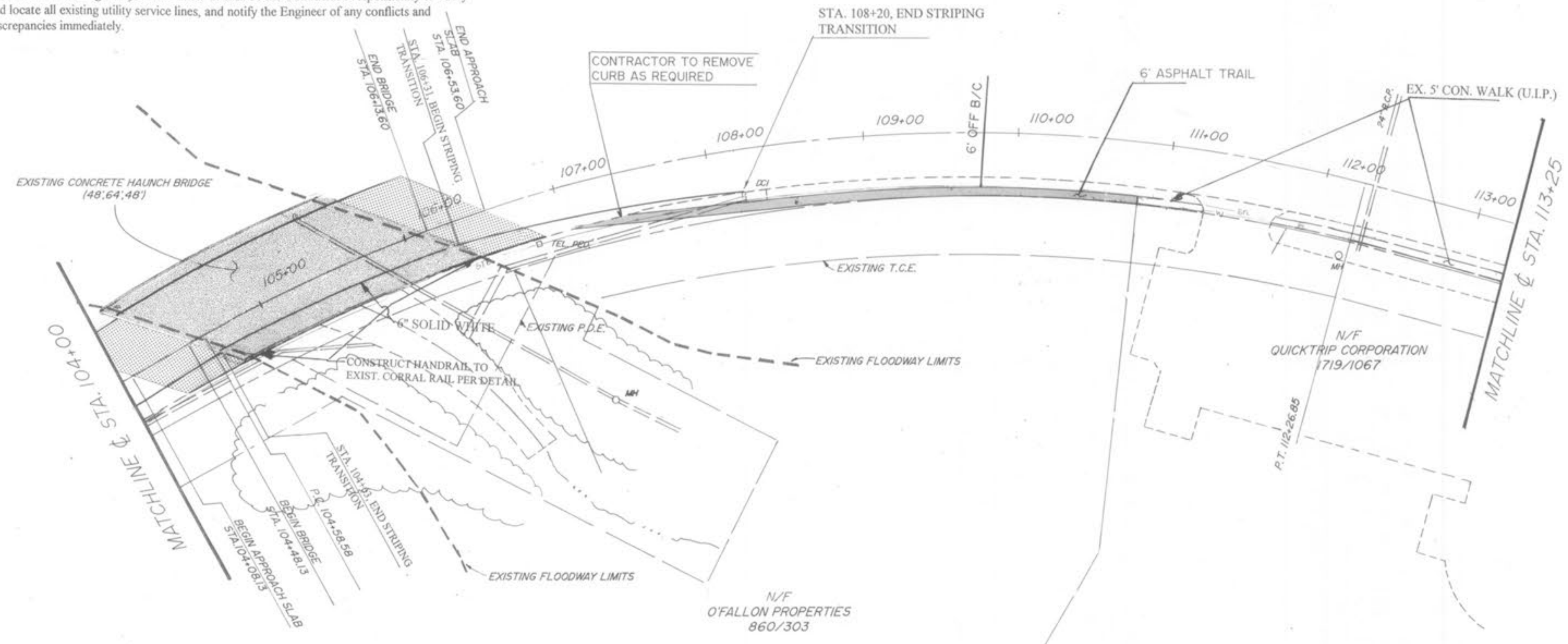


GBA GEORGE BUTLER ASSOCIATES, INC. Engineers / Architects / Landscape Architects / Planners Kansas City, Mo. / Lenexa, Ka. / O'Fallon, Mo. / Ames, Ia. / Oklahoma City, Ok.		DATE: MAY 1996
DESIGN BY: BAH		PROJECT NO: 7136.01
DRAWN BY: BAH		SHEET NO: 5
TOTAL SHEETS: 9		DATE: 5/96
REVISIONS	BY	DATE



All utility service lines shall be kept in service and protected during construction operations. The drawings indicate the location of known existing utility service lines as could best be determined. However, such locations are not guaranteed and the plans may not show the location of all existing utility service lines. It shall be the Contractor's responsibility to verify and locate all existing utility service lines, and notify the Engineer of any conflicts and discrepancies immediately.



- NOTES:
- The shape of the rail member is illustrative only. Any material or combination of materials listed in Article 2.7 may be used.
 - Rail element spacing shall conform to Article 2.7.1.2.4 of the 1992 (and 1994 interim) AASHTO Standard specifications for Highway Bridges.
 - The proposed corral rail shall be equipped with a pedestrian railing.

TYPICAL PEDESTRIAN RAILING DETAIL