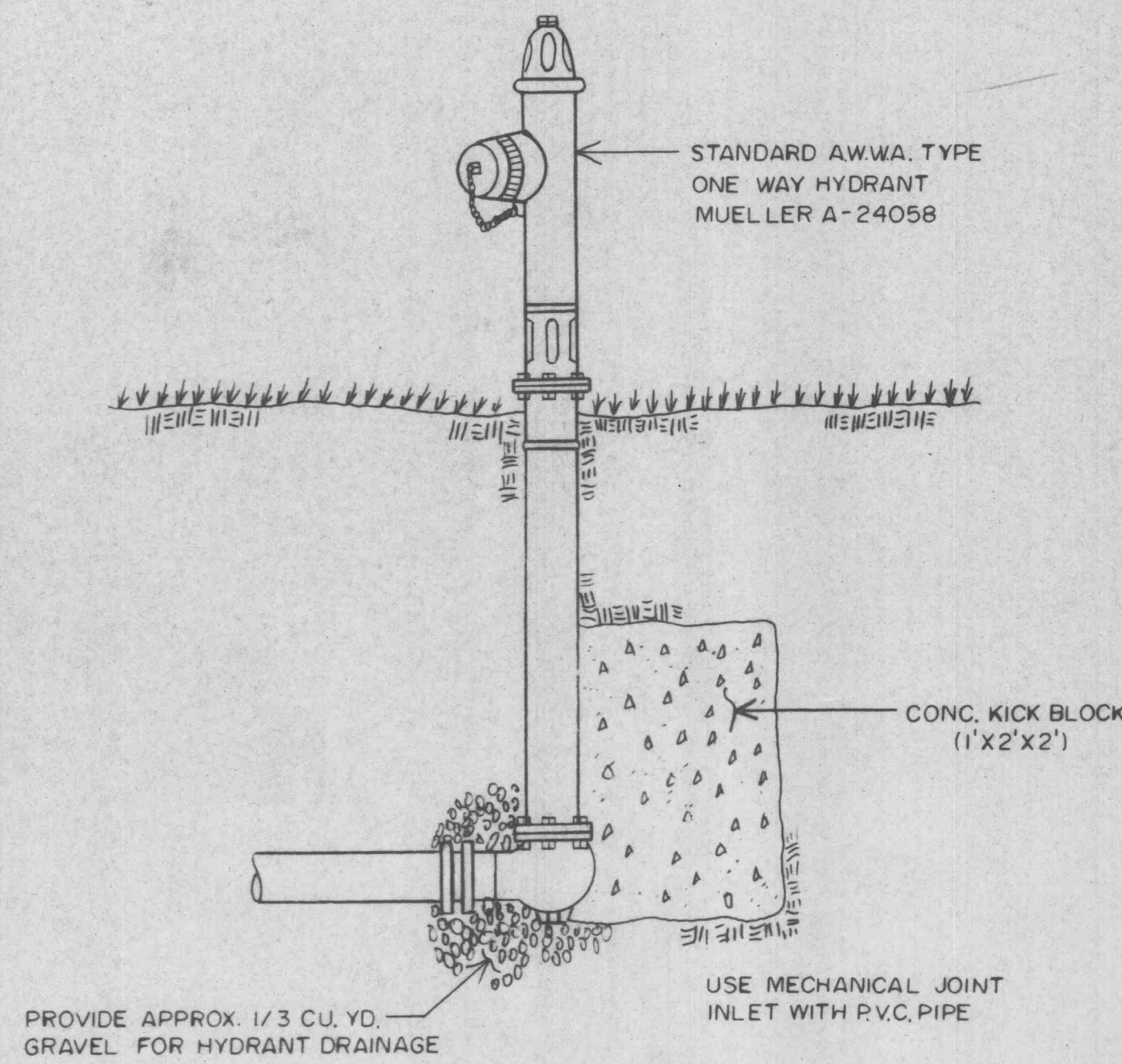
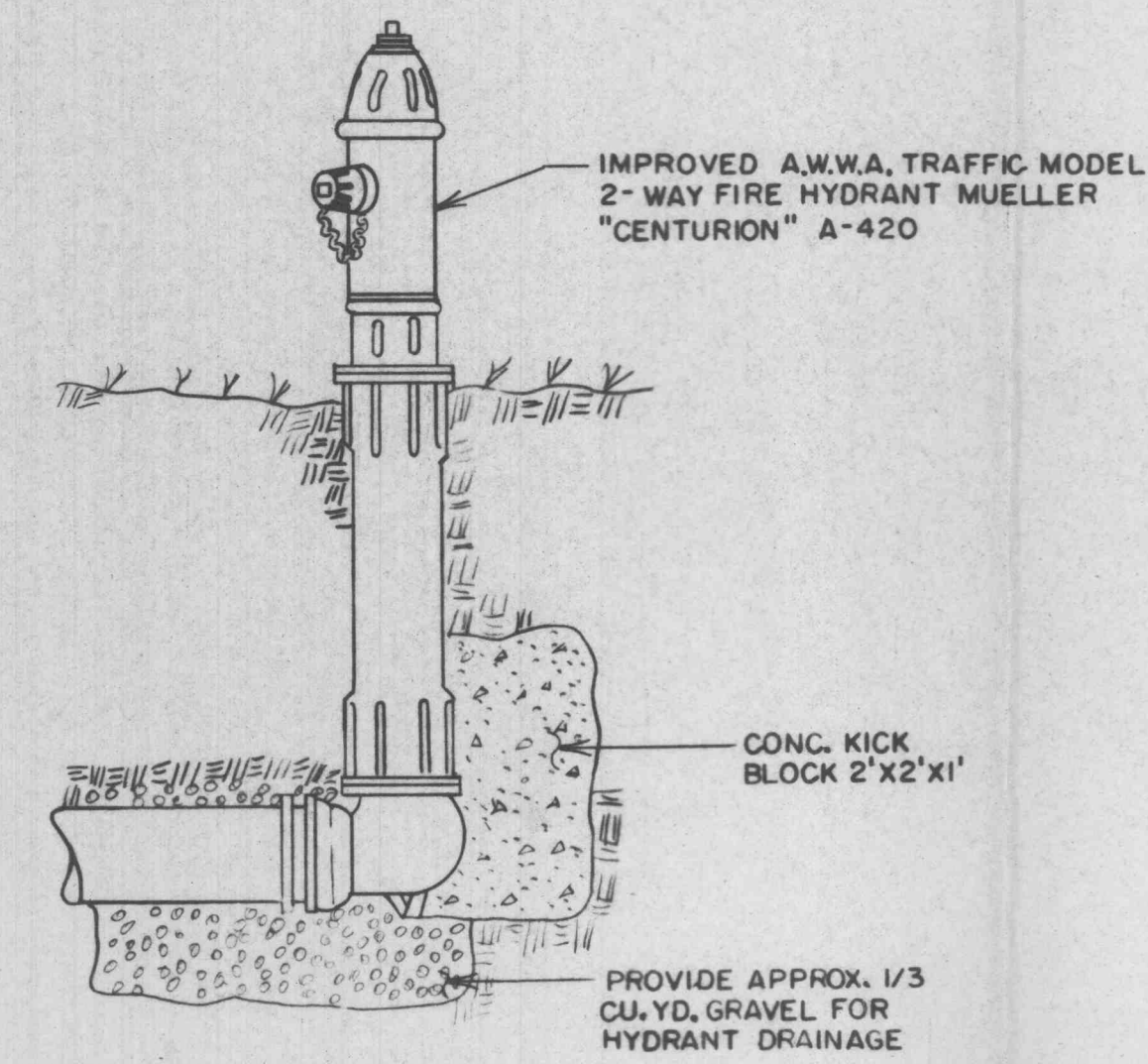


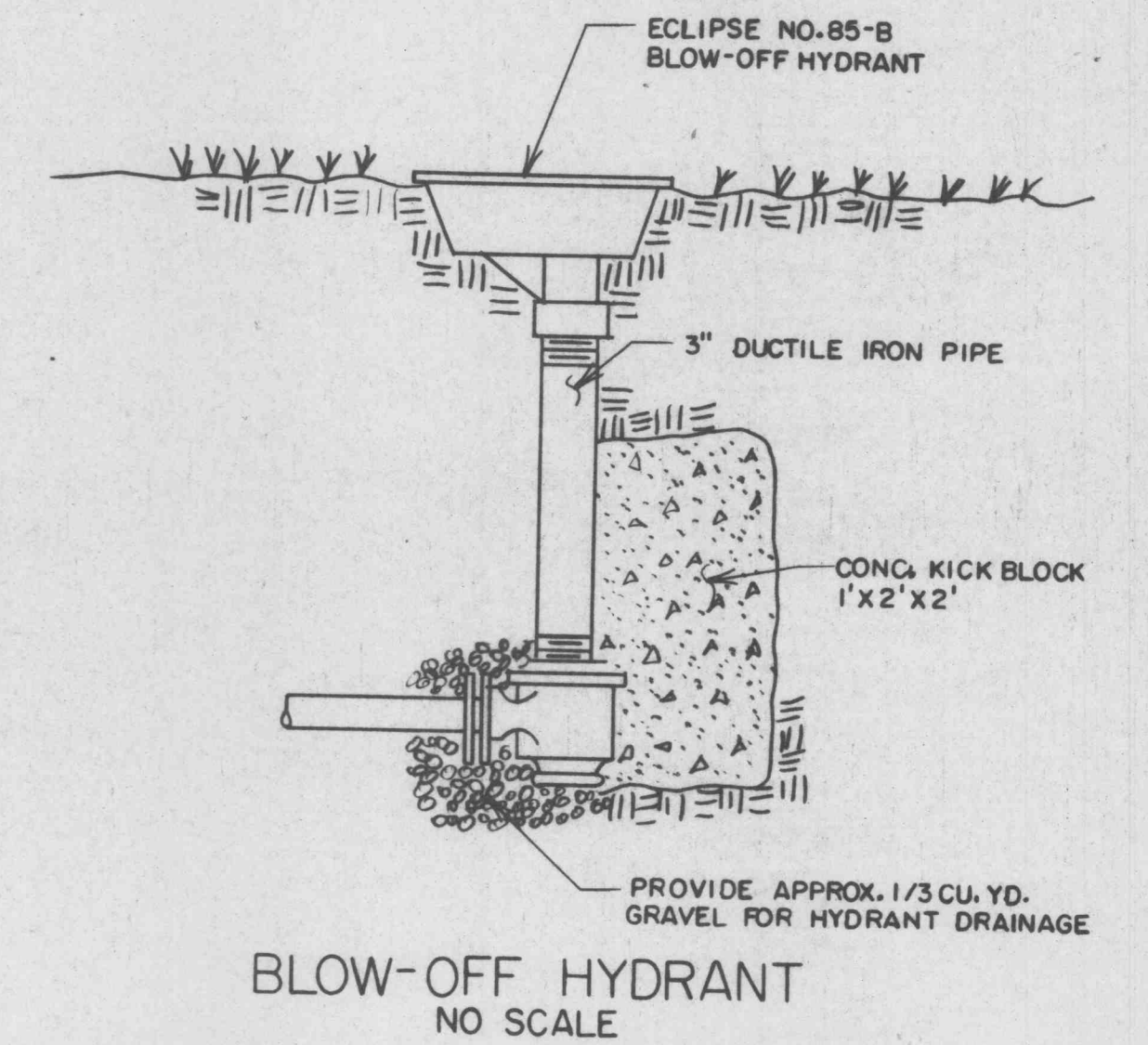
FIRE HYDRANT INSTALLATION DETAIL
NO SCALE



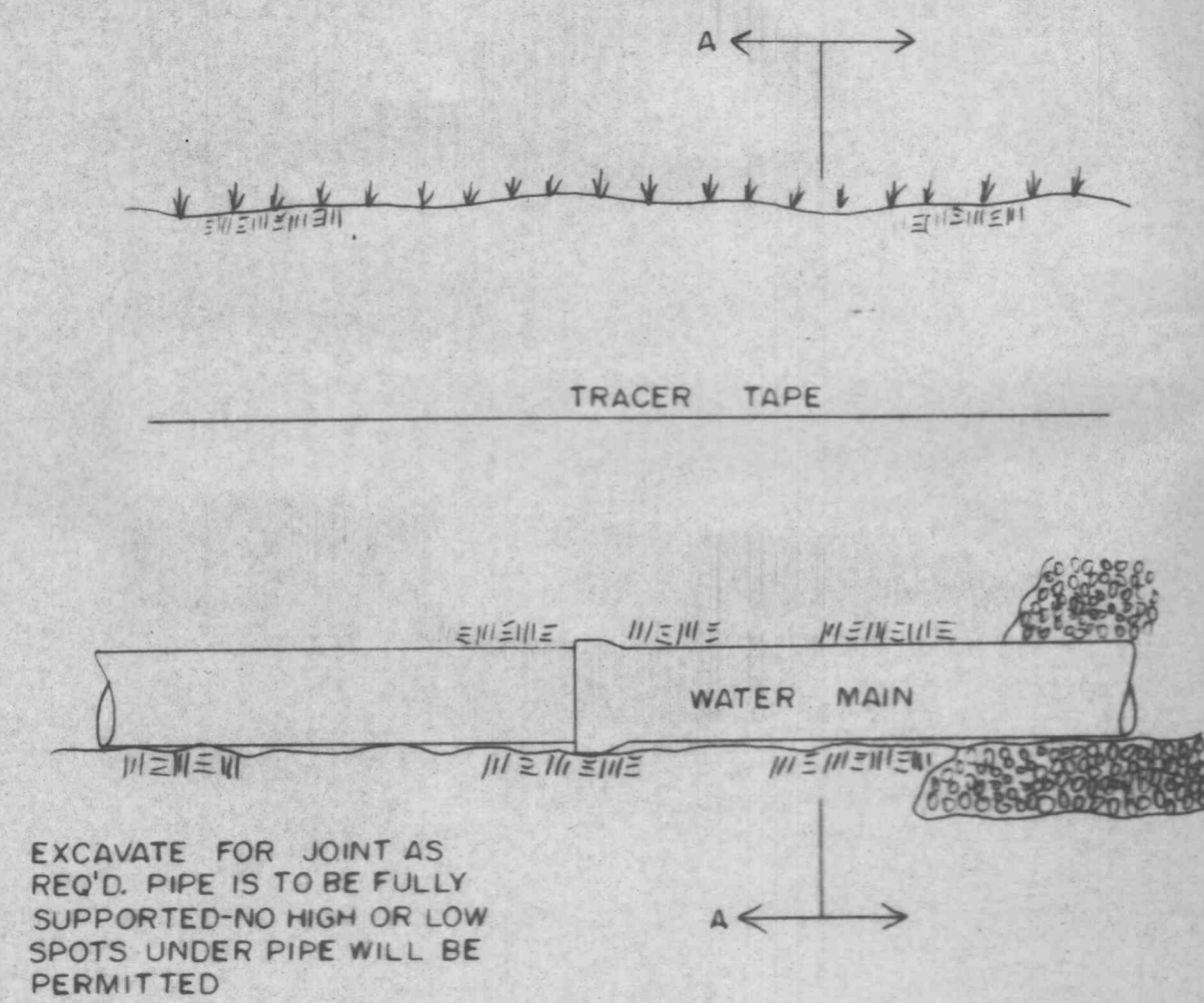
FLUSHING HYDRANT
NO SCALE



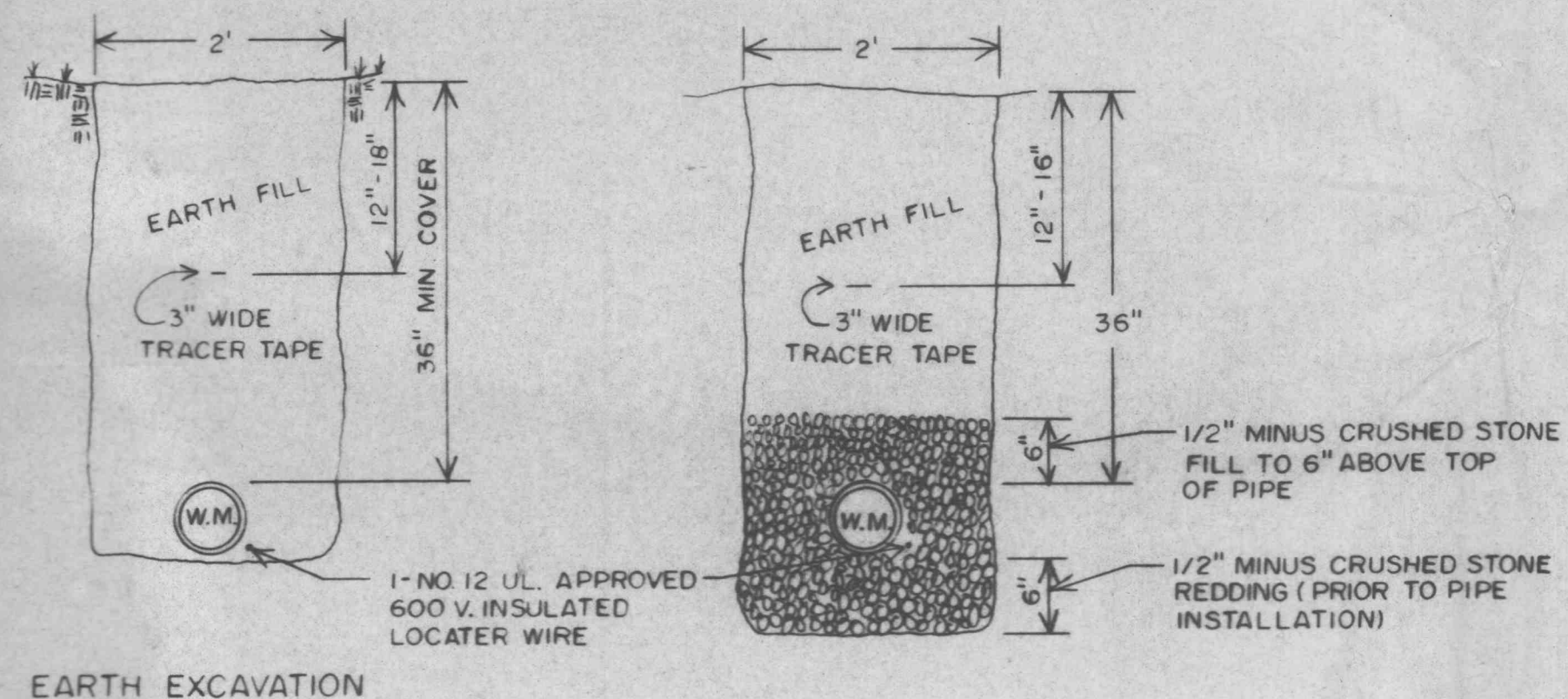
FIRE HYDRANT INSTALLATION DETAIL
NO SCALE



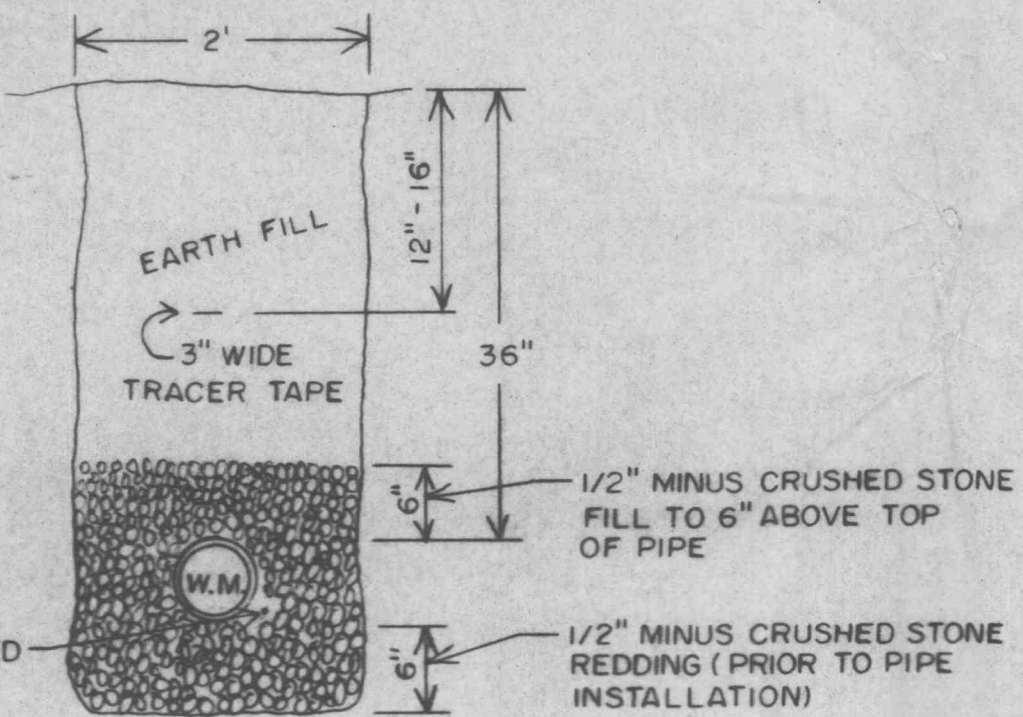
BLOW-OFF HYDRANT
NO SCALE



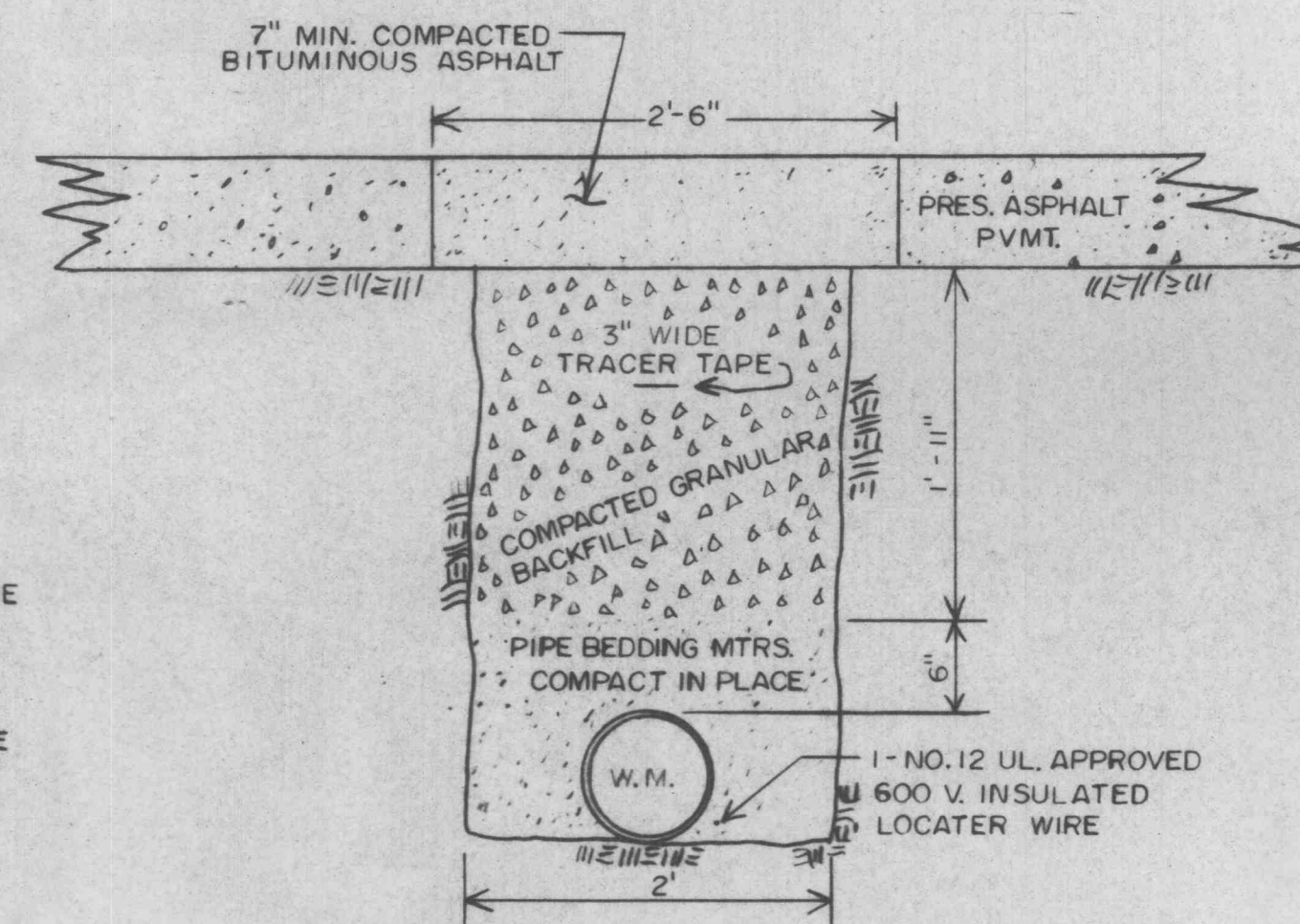
TYPICAL WATER MAIN TRENCHING DETAIL
NO SCALE



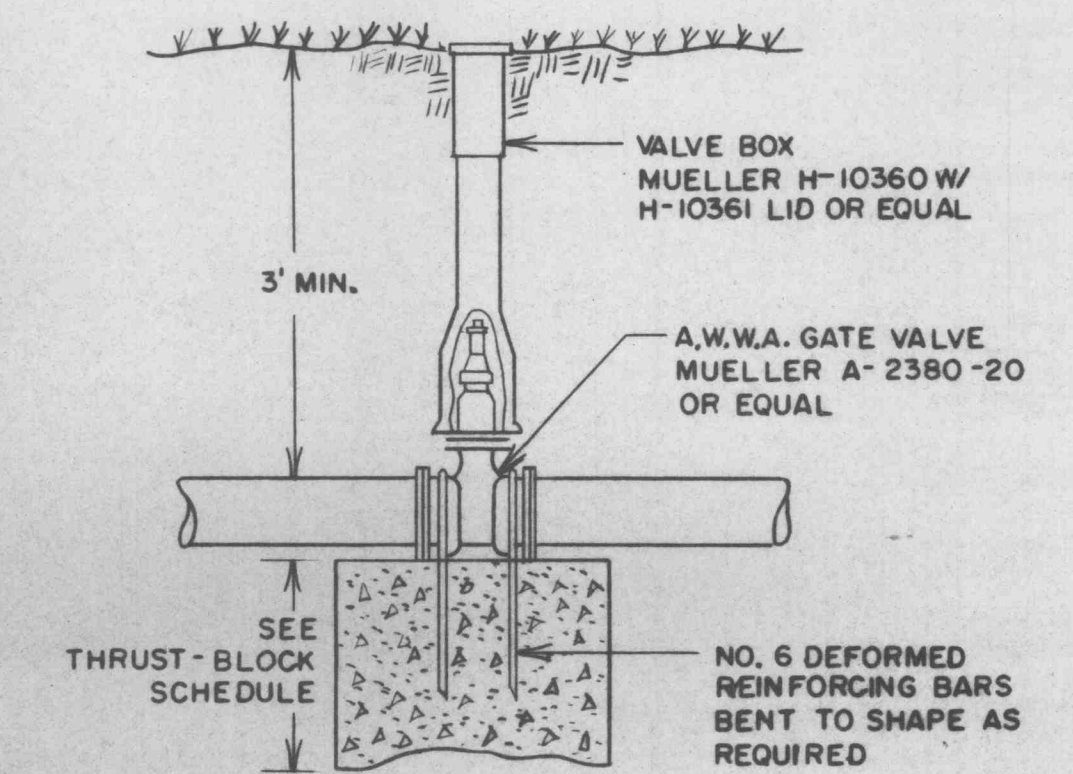
EARTH EXCAVATION



EXCAVATION THROUGH SOLID ROCK



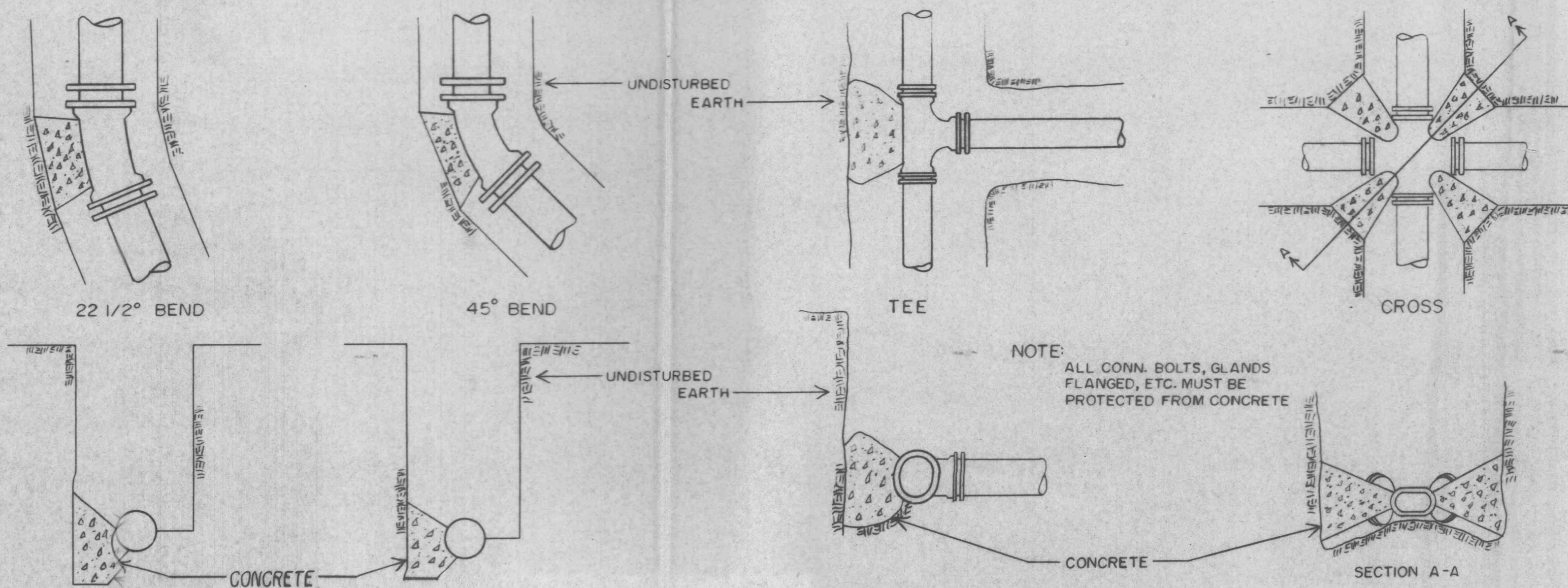
TYPICAL PAVED STREET OR ROAD TRENCH BACKFILL & SURFACE REPLACEMENT DETAIL
SCALE: 1"=1'-0"



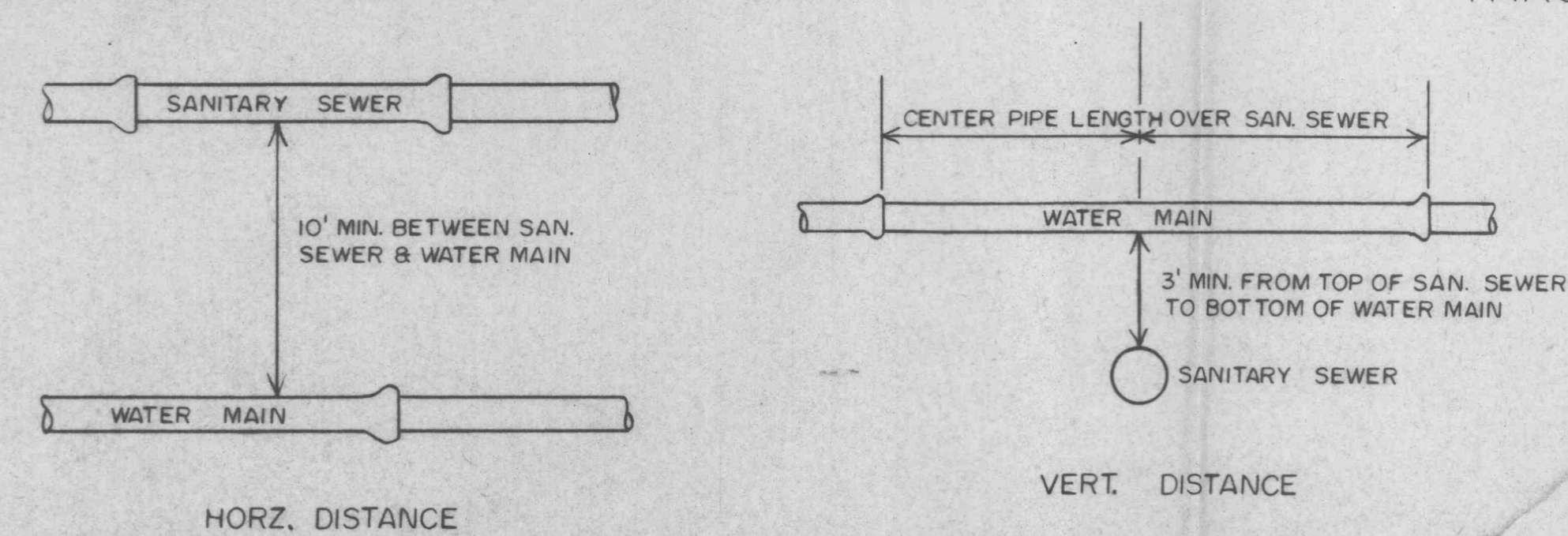
GATE VALVE W/ THRUST-BLOCK DETAIL
NO SCALE

| MAIN SIZE | MIN. THRUSTBLOCK BEARING DIMENSIONS TO BEAR AGAINST UNDISTURBED EARTH | | | | |
|-----------|---|--------------|---------|-------|---------|
| | 45° BEND | 22 1/2° BEND | TEE | VALVE | CROSS |
| 2" | 5'x1' | 5'x1' | 5'x1' | 5'x1' | 5'x1' |
| 4" | 1'x1' | 1'x1' | 2'x1' | 2'x1' | 1'x1' |
| 6" | 1.5'x1' | 1'x1' | 2'x1' | 2'x1' | 1'x1' |
| 8" | 2'x1' | 1'x1' | 2'x2.5' | 2'x2' | 1'x1.5' |
| 10" | 2'x2.5' | 1.5'x2' | 2'x3.5' | 2'x3' | 2'x2' |

THRUST-BLOCK SCHEDULE



TYPICAL THRUST-BLOCK DETAIL



TYPICAL WATER & SEWER SEPARATION
NO SCALE