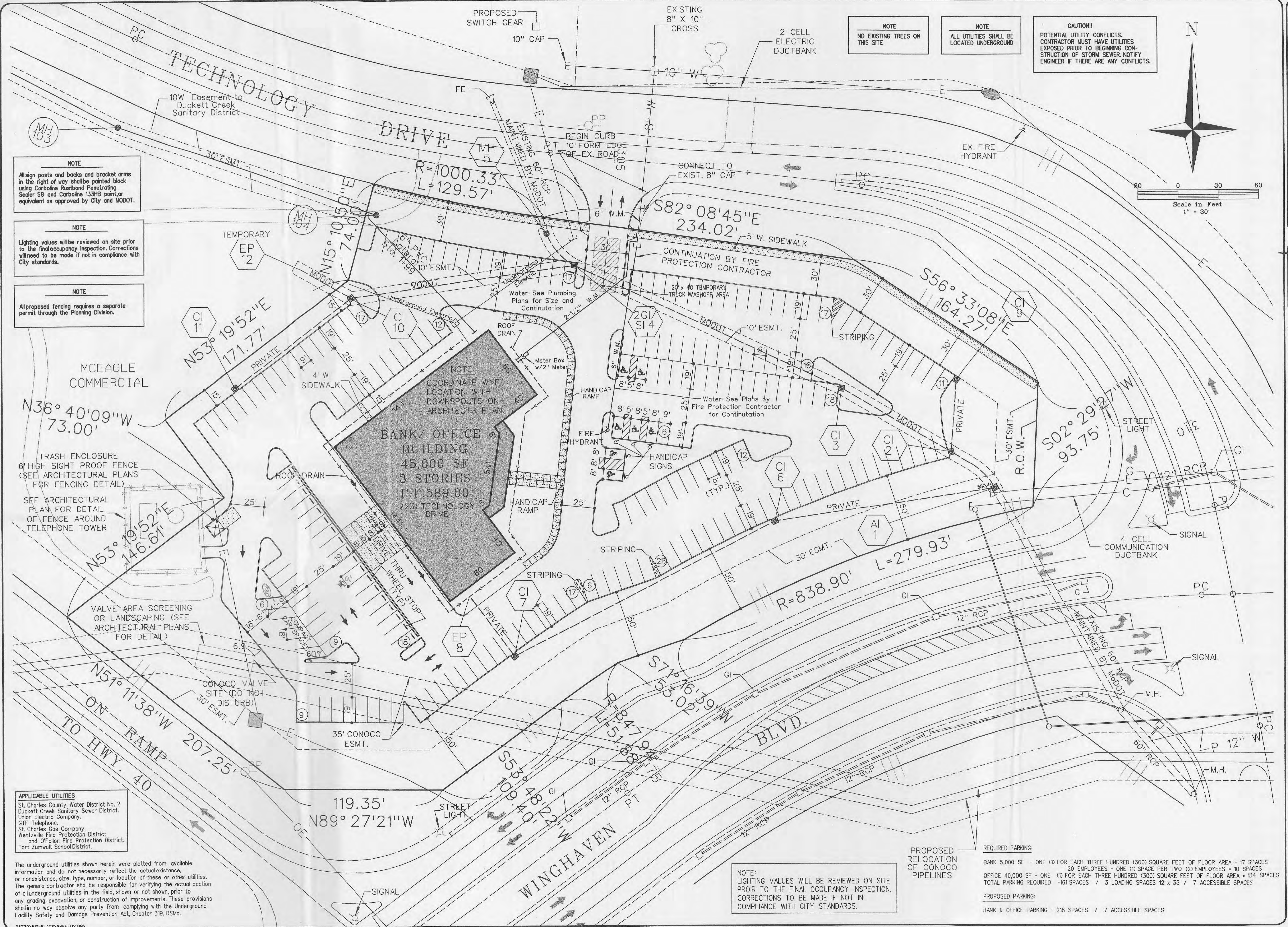


MIDWEST BANK

SITE PLAN
 Design By: E.A.K.
 Drawn By: D.K.L.
 Checked By: E.A.K.
 BB770

11-20-01
 02



NOTE
 All sign posts and backs and bracket arms in the right of way shall be painted black using Carboline Rustbond Penetrating Sealer SG and Carboline 133HB paint, or equivalent as approved by City and MODOT.

NOTE
 Lighting values will be reviewed on site prior to the final occupancy inspection. Corrections will need to be made if not in compliance with City standards.

NOTE
 All proposed fencing requires a separate permit through the Planning Division.

TRASH ENCLOSURE
 6' HIGH SIGHT PROOF FENCE (SEE ARCHITECTURAL PLANS FOR FENCING DETAIL)
 SEE ARCHITECTURAL PLAN FOR DETAIL OF FENCE AROUND TELEPHONE TOWER

VALVE AREA SCREENING OR LANDSCAPING (SEE ARCHITECTURAL PLANS FOR DETAIL)

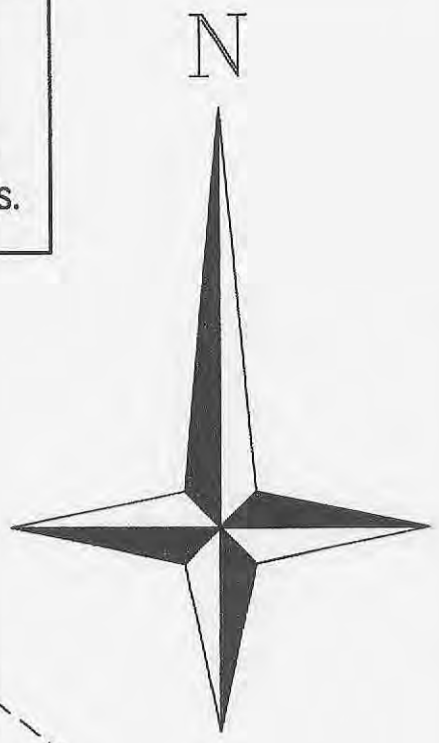
APPLICABLE UTILITIES
 St. Charles County Water District No. 2
 Duckett Creek Sanitary Sewer District.
 Union Electric Company.
 GTE Telephone.
 St. Charles Gas Company.
 Wentzville Fire Protection District
 and O'Fallon Fire Protection District.
 Fort Zumwalt School District.

The underground utilities shown herein were plotted from available information and do not necessarily reflect the actual existence, or nonexistence, size, type, number, or location of these or other utilities. The general contractor shall be responsible for verifying the actual location of all underground utilities in the field, shown or not shown, prior to any grading, excavation, or construction of improvements. These provisions shall in no way absolve any party from complying with the Underground Facility Safety and Damage Prevention Act, Chapter 319, RSMo.

NOTE
 NO EXISTING TREES ON THIS SITE

NOTE
 ALL UTILITIES SHALL BE LOCATED UNDERGROUND

CAUTION!!
 POTENTIAL UTILITY CONFLICTS. CONTRACTOR MUST HAVE UTILITIES EXPOSED PRIOR TO BEGINNING CONSTRUCTION OF STORM SEWER. NOTIFY ENGINEER IF THERE ARE ANY CONFLICTS.



NOTE:
 LIGHTING VALUES WILL BE REVIEWED ON SITE PRIOR TO THE FINAL OCCUPANCY INSPECTION. CORRECTIONS TO BE MADE IF NOT IN COMPLIANCE WITH CITY STANDARDS.

REQUIRED PARKING:
 BANK 5,000 SF - ONE (1) FOR EACH THREE HUNDRED (300) SQUARE FEET OF FLOOR AREA - 17 SPACES
 20 EMPLOYEES - ONE (1) SPACE PER TWO (2) EMPLOYEES - 10 SPACES
 OFFICE 40,000 SF - ONE (1) FOR EACH THREE HUNDRED (300) SQUARE FEET OF FLOOR AREA - 134 SPACES
 TOTAL PARKING REQUIRED - 161 SPACES / 3 LOADING SPACES 12' x 35' / 7 ACCESSIBLE SPACES

PROPOSED PARKING:
 BANK & OFFICE PARKING - 218 SPACES / 7 ACCESSIBLE SPACES