

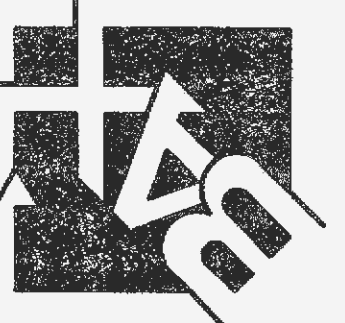
LANDSCAPE LEGEND

SYMBOL	QUANTITY	COMMON NAME
(DECIDUOUS) 2" GALIPER	10	EASTERN REDBUD (MATURE HT. 20'-30')
(SHRUB) 1 GALLON	14	WILD HYDRANGEA, FRAGRANT SUMAC, BLACK COHOSH, COMPASS PLANT

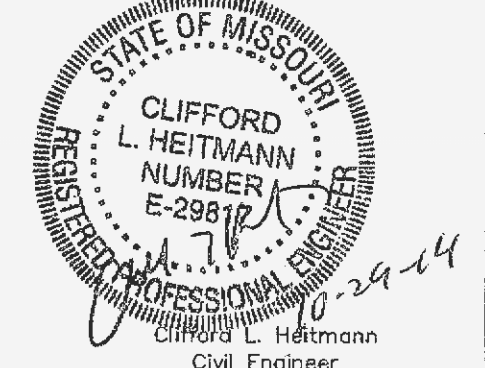
NOTE: LANDSCAPING AS SHOWN SHALL BE BY OWNER AND SHOULD BE REVIEWED BY A QUALIFIED LANDSCAPE DESIGNER. ALL LANDSCAPE MATERIALS SHOULD BE NATIVE TO MISSOURI. REFER TO WEBSITE WWW.GROWNATIVE.ORG.

PROJECT TITLE:
MIKE CLEMENS
CENTER FOR
ADAPTIVE LEARNING

**ENGINEERING
PLANNING
SURVEYING**
221 Point View Blvd.
St. Charles, MO 63301
636-928-5562
FAX 636-928-1718



DISCLAIMER OF RESPONSIBILITY
I hereby specify that the documents intended to be authenticated by my seal are limited to this sheet, and I hereby disclaim any responsibility for all other drawings, specifications, estimates, reports or other documents or instruments relating to or intended to be used for any part or parts of the architectural or engineering project or survey.



Copyright 2014
Box Engineering Company, Inc.
Engineering Authority No. 000655
Surveying Authority No. 000144
All Rights Reserved

REVISIONS

10-16-14	CITY REVIEW
10-23-14	CITY REVIEW

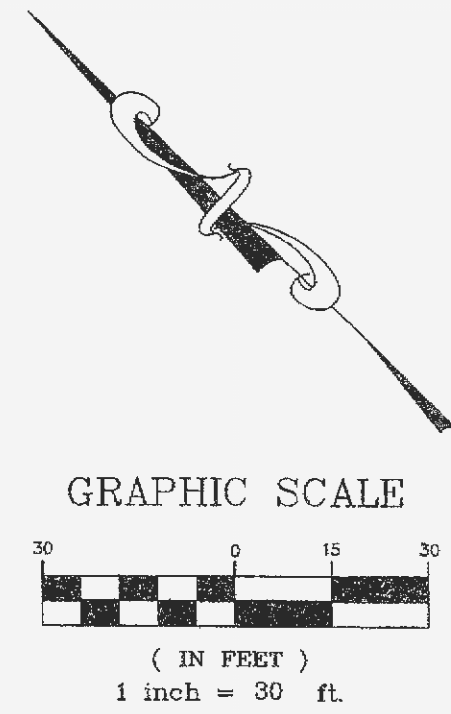
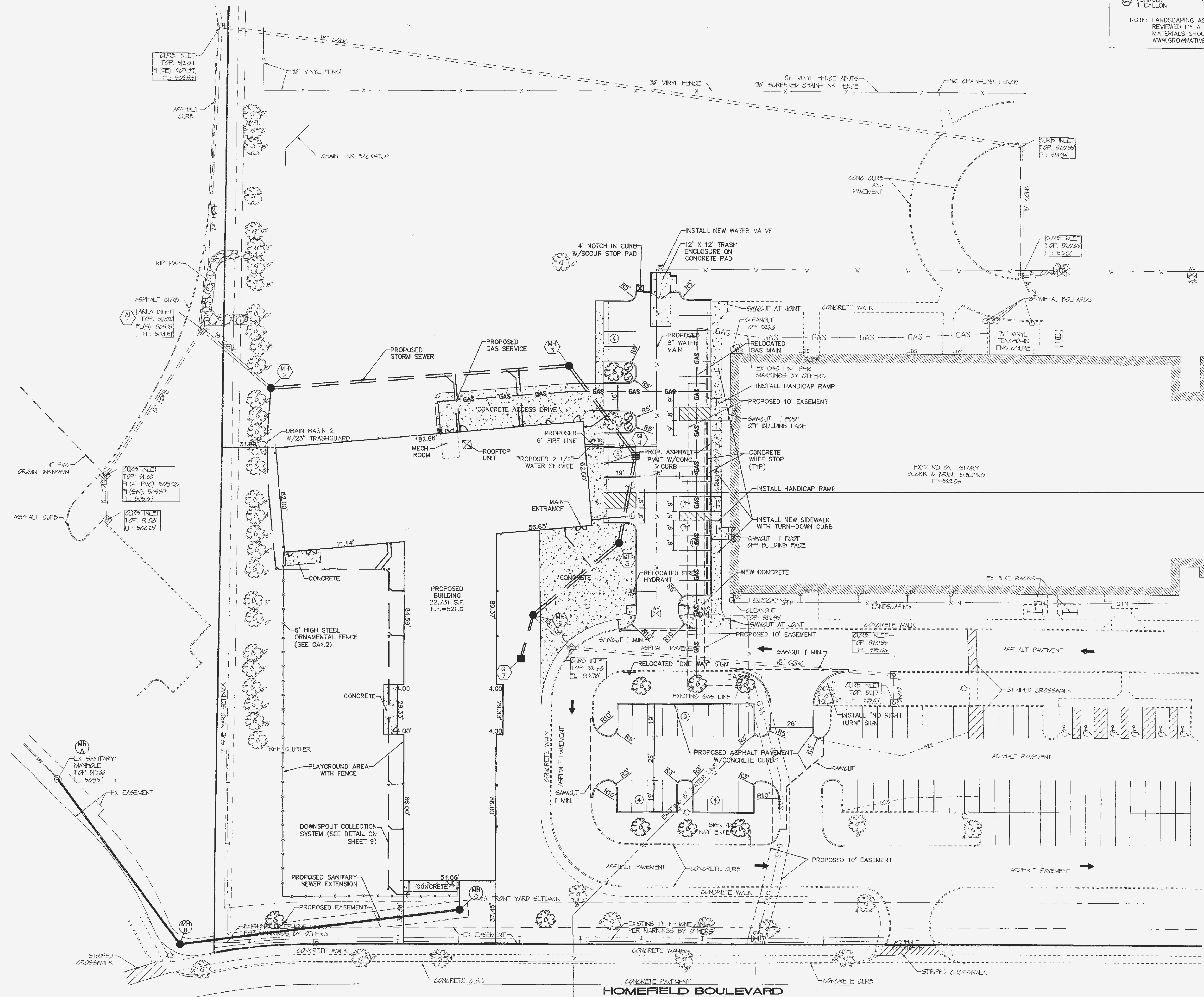
Developer / Owner:
FORT ZUMWALT SCHOOL DISTRICT
555 EAST TERRA LANE
O'FALLON, MO 63366

P+Z No.
#99125.03.01
APPROVED 6-5-14

City No.
#14-400

Page No.
4 of 11

SITE PLAN



NOTE: SEE SECTION 00-24-13 SCOPE OF BIDS FOR CONTRACTORS RESPONSIBLE FOR SITE IMPROVEMENTS.

CATEGORY A - CARPENTRY AND RELATED ITEMS: SITE IMPROVEMENTS NOT ASSOCIATED WITH UTILITIES.

CATEGORY H - PLUMBING: STORM SEWERS, SANITARY SEWERS AND WATER UTILITY WORK.

CATEGORY I - HVAC: GAS UTILITY WORK.

CATEGORY J - ELECTRICAL: ELECTRICAL UTILITY WORK.

ALL SIGNAGE BY CATEGORY A CONTRACTOR.