

STORM WATER POLLUTION PREVENTION PLAN

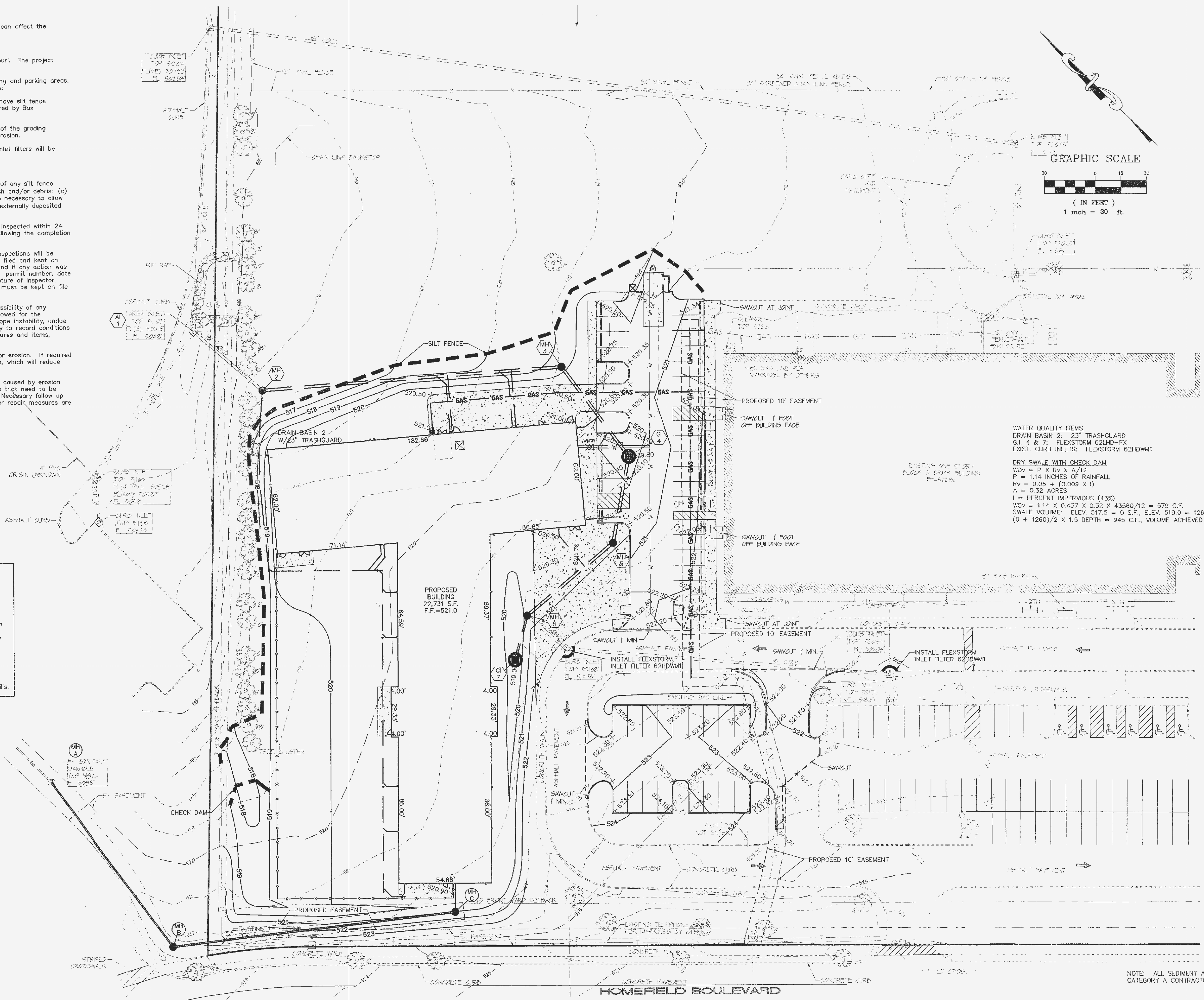
- A. PURPOSE:**
 The Storm Water Pollution Prevention Plan (SWPPP) shall meet the following objectives:
- Prevent erosion where construction activities shall occur.
 - Prevent pollutants from mixing with storm water.
 - Prevent pollutants from being discharged by trapping them on-site, before they can affect the receiving waters.
- B. PROJECT DESCRIPTION:**
 The project is located in the Peru Creek watershed in St. Charles County, Missouri. The project disturbs approximately 2.0 acres.
 The project activities consist of clearing and grading the site for new school building and parking areas. The site will be protected with the various erosion protection measures listed below:
1. Silt Barriers: The perimeter of the project that allows storm water to exit will have silt fence installed. Details of these devices are depicted on the construction plans prepared by Box Engineering Company, Inc.
 2. Re-vegetation: The site will consist of varying ground slopes. Upon completion of the grading activities all disturbed areas will be sodded to stabilize the slopes and prevent erosion.
 3. Storm Water Quality: Construction of Filter Strips and Check Dams along with inlet filters will be utilized for storm water protection.

- C. MAINTENANCE AND INSPECTION:**
- Regular Maintenance:** Weekly inspections of the project will include: (a) The repair of any silt fence barriers not well shaped or out of place; (b) The removal of any accumulated trash and/or debris; (c) The clearing of debris, weeds and wild growth and the removal of vegetation where necessary to allow the storm water quality items to perform effectively; and (d) The removal of any externally deposited waste materials.
- Periodic Inspections:** Following each rain of more than 0.50 inch, the site will be inspected within 24 hours, and any necessary maintenance will be provided for a period of one year following the completion of the above remediation measures.
- Maintenance and Inspections Summary:** Summaries of the maintenance and the inspections will be maintained and shall be available from the Owner. An inspection report should be filed and kept on site for every inspection. The report should detail the findings of the inspection and if any action was required. The inspection form needs to include: name of site, name of inspector, permit number, date of inspection, major observations, actions taken to correct problems and the signature of inspector. The inspection reports need to be kept in an accessible onsite location. The reports must be kept on file by the permittee for three years after the project is completed.
- The field inspections will be conducted in a systematic manner to minimize the possibility of any significant feature being overlooked. A detailed checklist will be developed and followed for the examination. Particular attention will be given to detecting evidence of erosion, slope instability, undue settlement, displacement, and tilting. Photographs and drawings will be used freely to record conditions in order to minimize descriptions. The field inspection will include appropriate features and items, including potential hazards to human life or property.
- The condition of the slopes and vegetative cover will be evaluated and examined for erosion. If required basins will be examined for excessive sedimentation and increase in sediment loads, which will reduce the basins capacity.
- Measures will be taken to promote the growth of vegetation and repair of damage caused by erosion and sedimentation. The inspection will also provide recommendations for measures that need to be undertaken immediately, based on the experience and judgment of the inspector. Necessary follow up inspections will be made as necessary to verify that any maintenance, alteration, or repair measures are accomplished by methods acceptable by standard engineering practice.

SPILL AND SITE POLLUTION:

Should an accidental spill occur refer to material safety data sheets. Any spills of hazardous materials in quantities in excess of reportable quantities as defined by EPA or the state agency regulations, shall be immediately reported to the EPA National Response Center (800-424-8802) and Missouri Department of Natural Resources (573-634-2436). Reportable spills for petroleum products is greater than 50 gallons. All other reportable hazardous materials and their quantities may be found on the web site of <http://www.dnr.mo.gov> on the local number is 573-840-9750. Federal law requires the responsible party to report any release of oil if it reaches or threatens a sewer, lake, creek, stream, river, groundwater, wetlands, or area like a road ditch, that drains into the above.

An emergency spill kit is required to be onsite for all potential spills.



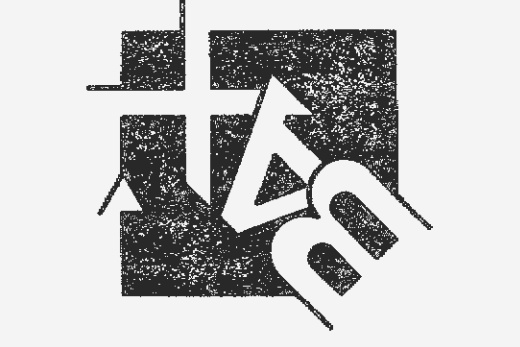
WATER QUALITY ITEMS
 DRAIN BASIN 2: 23" TRASHGUARD
 G.I. 4 & 7: FLEXSTORM 62LHD-FX
 EXIST. CURB INLETS: FLEXSTORM 62HDWM

DRY SWALE WITH CHECK DAM
 WQV = P X Rv X A / 12
 P = 1.14 INCHES OF RAINFALL
 Rv = 0.05 + (0.009 X I)
 A = 0.32 ACRES
 I = PERCENT IMPERVIOUS (43%)
 WQV = 1.14 X 0.437 X 0.32 X 43560 / 12 = 579 C.F.
 SWALE VOLUME: ELEV. 517.5 = 0 S.F., ELEV. 519.0 = 1260 S.F.
 (0 + 1260) / 2 X 1.5 DEPTH = 945 C.F., VOLUME ACHIEVED AT ELEV. 518.42

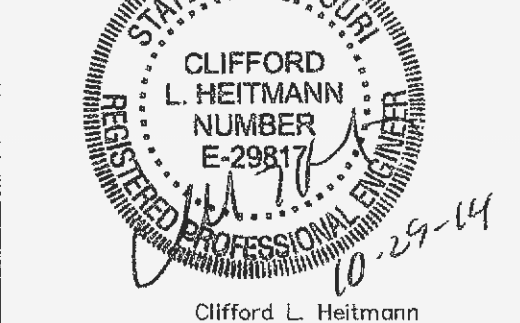
NOTE: ALL SEDIMENT AND EROSION CONTROL BY CATEGORY A CONTRACTOR.

PROJECT TITLE:
 MIKE CLEMENS
 CENTER FOR
 ADAPTIVE LEARNING

ENGINEERING PLANNING SURVEYING
 221 Point West Blvd.
 St. Charles, MO 63301
 636-928-5562
 FAX 636-928-1718



DISCLAIMER OF RESPONSIBILITY
 I hereby certify that the documents attached to this sheet, and I hereby disclaim any responsibility for all other Drawings, Specifications, Estimates, Reports or other documents or instruments relating to or intended to be used for any part of the project of the architectural or engineering project.



Clifford L. Heitmann
 Civil Engineer
 E29817
 Copyright 2014
 Box Engineering Company, Inc.
 Engineering Authority No. 000855
 Surveying Authority No. 000144
 All Rights Reserved.

REVISIONS

10-16-14	CITY REVIEW
10-23-14	CITY REVIEW

Developer / Owner:
 FORT ZUMWALT SCHOOL DISTRICT
 555 EAST TERRA LANE
 O'FALLON, MO 63366

SEDIMENT AND EROSION CONTROL PLAN

P+Z No.
 #99125.03.01
 APPROVED 6-5-14

City No.
 #14-400

Page No.
 6 of 11

Box Project #98-00001J Issue Date: 09/09/2014