

MILL POND APARTMENTS MISSOURI O'FALLON,

PINNACLE
Civil Engineering, L.L.C.

Phone: 672.255.2790
Fax: 672.255.2547
Seven Oaks Center
302 Commerce Drive
Columbia, MO 65201

COPYRIGHT © 2006
1ST ISSUE
09 NOVEMBER 2005
REVISIONS
23 JANUARY 2006
09 FEBRUARY 2006
02 JUNE 2006
07 SEPT 2006 THHinc

SHEET NO.
C1.2

JOB NO. 2324 SHEET 04 OF 17

Summary of Drainage Calculations (TR55):

Drainage Area: 3.54 Acres
Soil Type: Hydrologic Soil Group D
Pre-Development CN: 78
Post-Development CN: 86

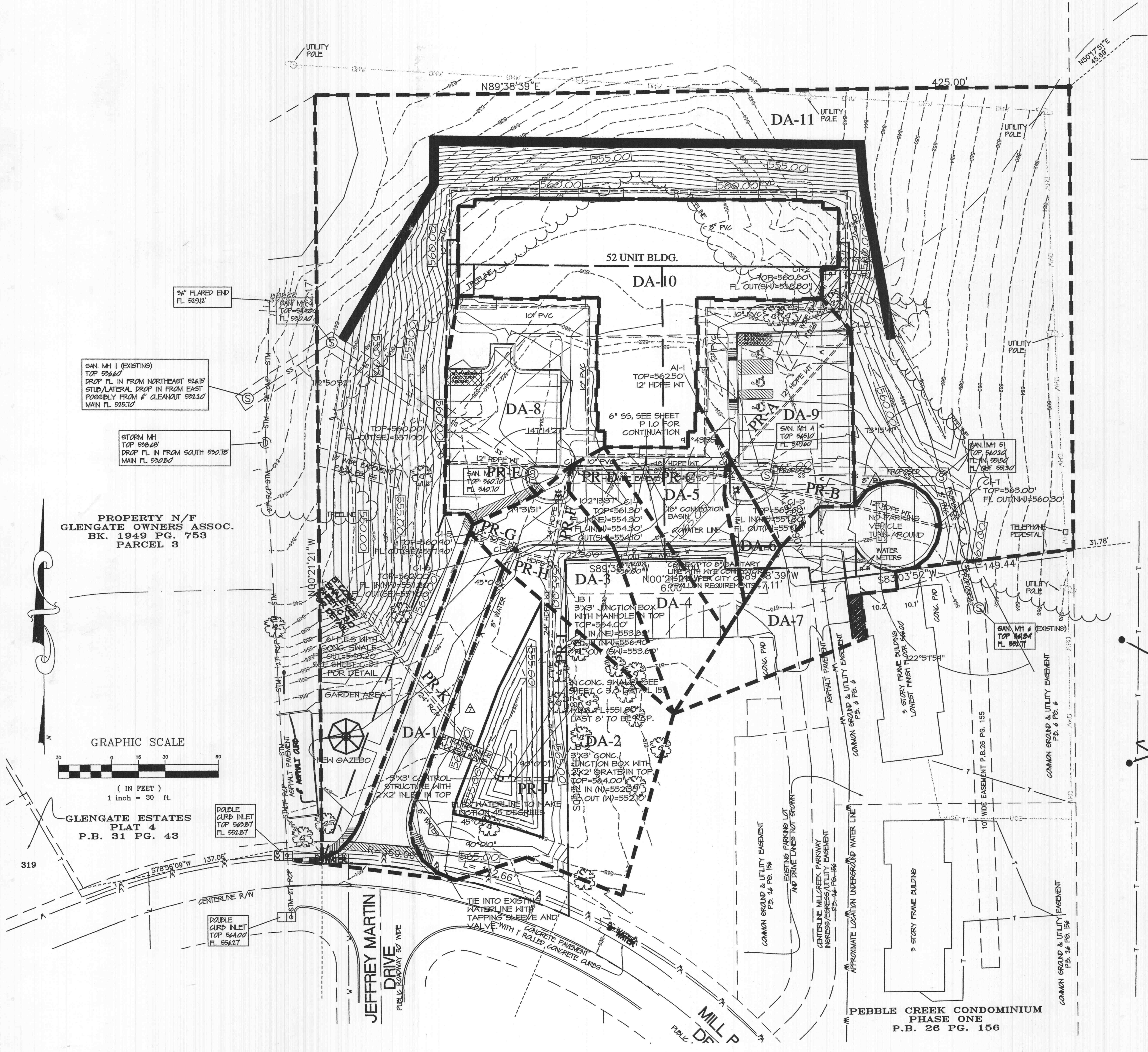
Design Storm (year)	Pre-Development Discharge (cfs)	Post-Development Discharge (cfs)	Required Detention Basin Size (CF)
2	1.50	2.10	10,200
5	2.21	3.31	13,200
10	2.80	4.56	15,600
25	3.40	5.66	18,200
100	4.66	7.56	23,100

Total Basin Volume - 34,000 CF

Pipe Sizing - Rational Method (15 yr. 20 min Storm):

Drainage Area	Total Area (Ac)	Impervious Area (Ac)	Pervious Area (Ac)	PI (rs)	Q(cfs)
DA-1	0.12	0.12	0.00	3.30	0.40
DA-2	0.38	0.00	0.38	1.87	0.71
DA-3	0.12	0.08	0.04	3.30	0.40
DA-4	0.10	0.07	0.03	3.30	0.33
DA-5	0.10	0.08	0.02	3.30	0.33
DA-6	0.03	0.02	0.01	3.30	0.10
DA-7	0.18	0.13	0.05	3.30	0.59
DA-8	0.22	0.15	0.07	3.30	0.73
DA-9	0.22	0.18	0.04	3.30	0.73
DA-10	0.38	0.38	0.00	3.30	1.25
DA-11	1.69	0.00	1.69	1.87	3.16

Pipe Run	Pipe Size (in)	Material	Manning's n	Length(ft)	Slope(%)	Capacity (cfs)	Flow (cfs)	Remaining Capacity (cfs)
A	12	HDPE	0.010	101	1.0	4.63	0.73	3.90
B	12	HDPE	0.010	121	1.5	5.67	0.59	5.08
C	18	HDPE	0.010	45	4.4	28.64	1.42	27.22
D	18	HDPE	0.010	41	4.4	28.64	3.00	25.64
E	12	HDPE	0.010	68	5.5	10.86	0.73	10.13
F	24	HDPE	0.010	50	1.0	29.41	4.06	25.35
G	12	HDPE	0.010	25	1.3	4.06	0.40	3.66
H	12	HDPE	0.010	19	1.3	4.06	0.80	3.26
I	24	HDPE	0.010	127	1.0	29.41	4.86	24.55
J	24	HDPE	0.010	19	1.6	37.20	4.86	32.34
K	24	RCP	0.013	134	1.0	22.60	5.57	17.03



25 SEPT 2006 THHinc

ASI #3