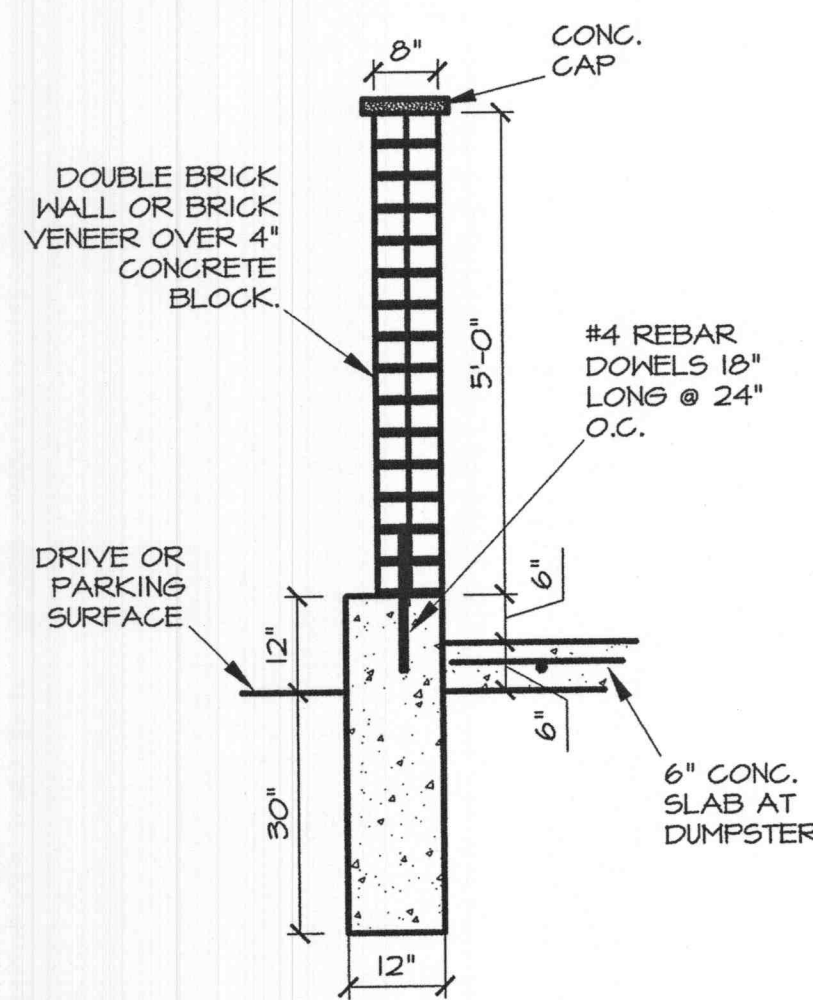
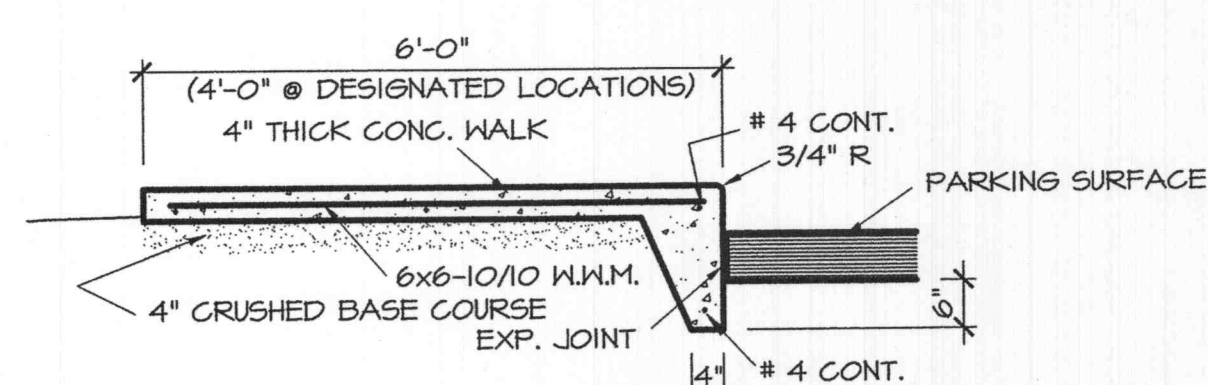


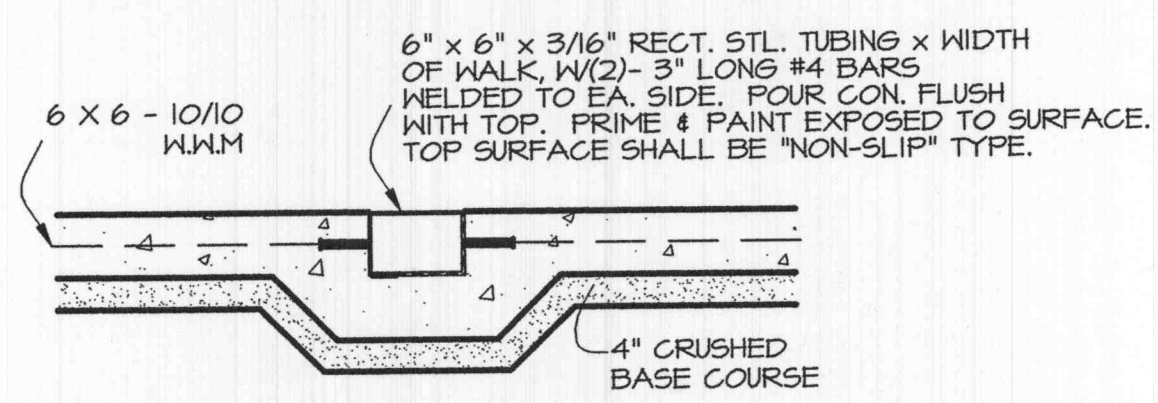
**DUMPSTER ENCLOSURE** ①  
SCALE: 1/4" = 1'-0"



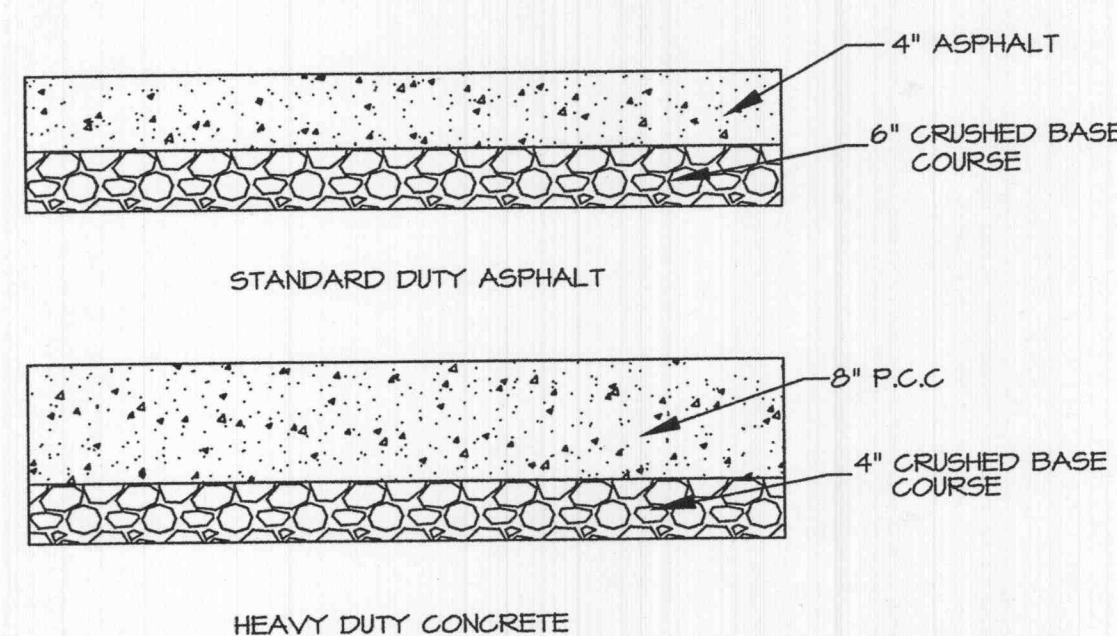
**SECTION**  
SCALE: 1/2" = 1'-0"



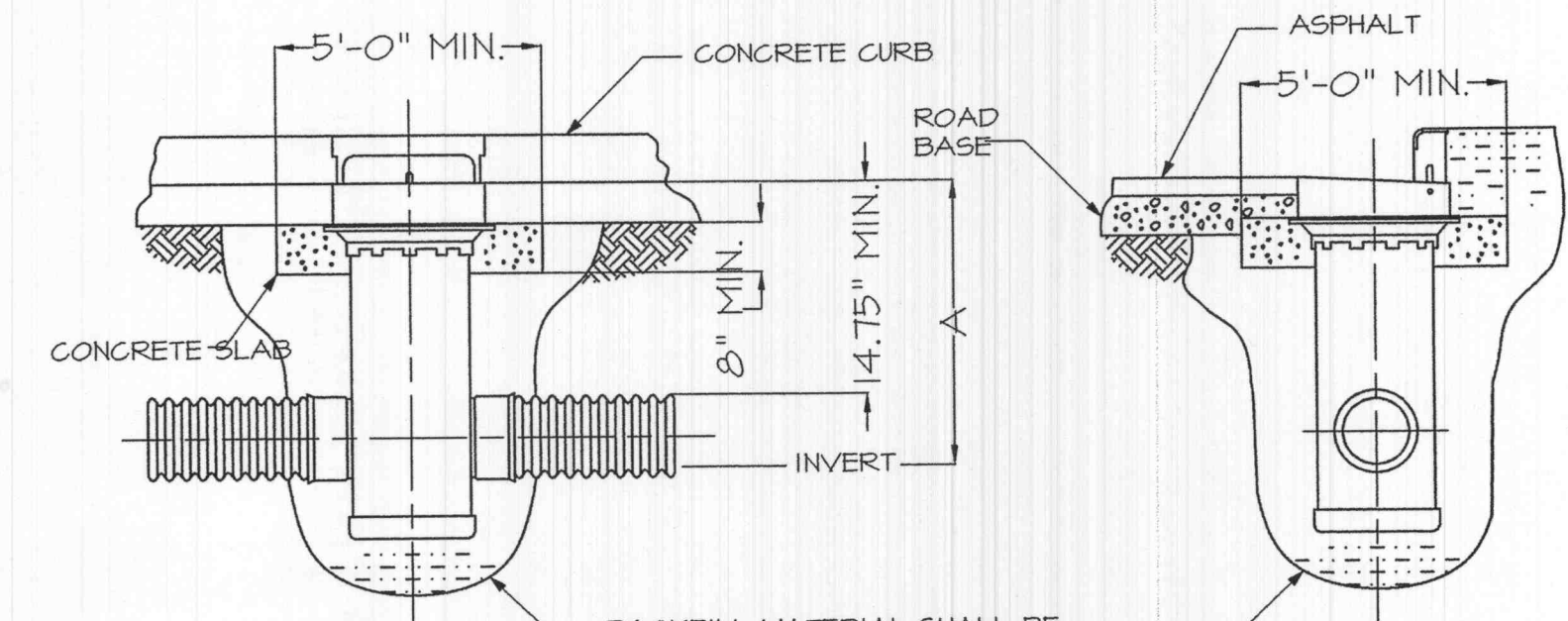
**CURB WALK** ②  
SCALE: 1/2" = 1'-0"



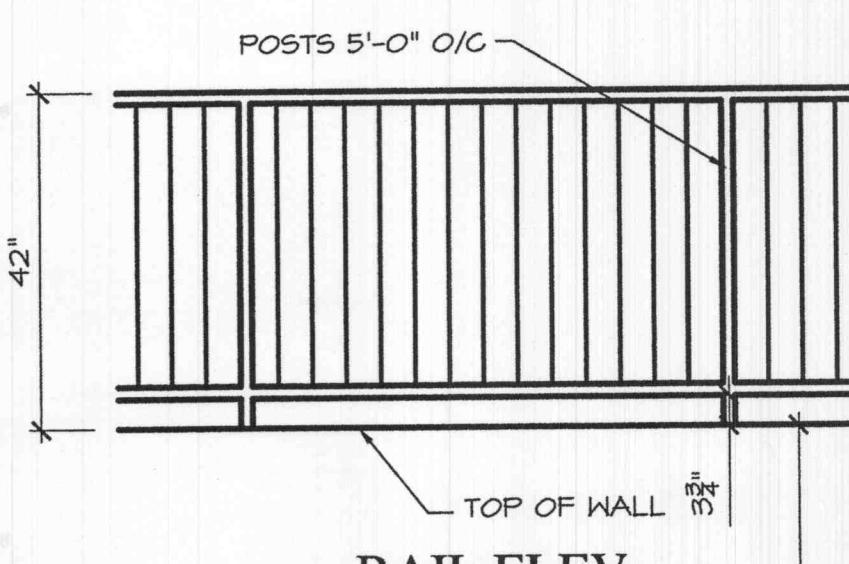
**WALK DRAIN DTL.** ③  
SCALE: 1" = 1'-0"



**PAVEMENT DETAILS** ④  
NOTE: ALL PAVING TO BE IN ACCORDANCE WITH ST. CHARLES COUNTY STANDARDS AND SPECIFICATIONS EXCEPT AS MODIFIED BY THE CITY OF O'FALLON ORDINANCES.

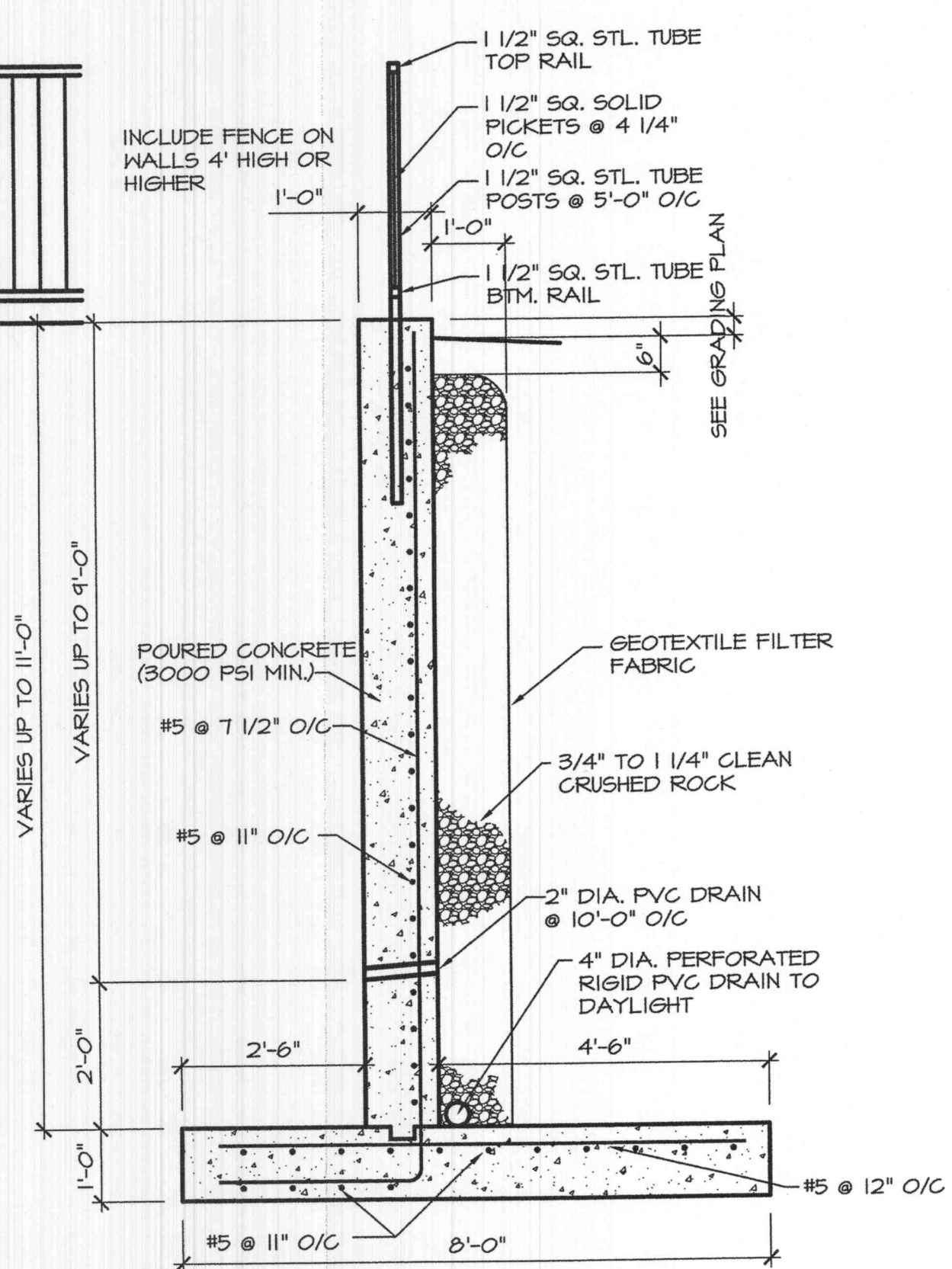


**C I INSTALLATION** ⑤  
NOT TO SCALE

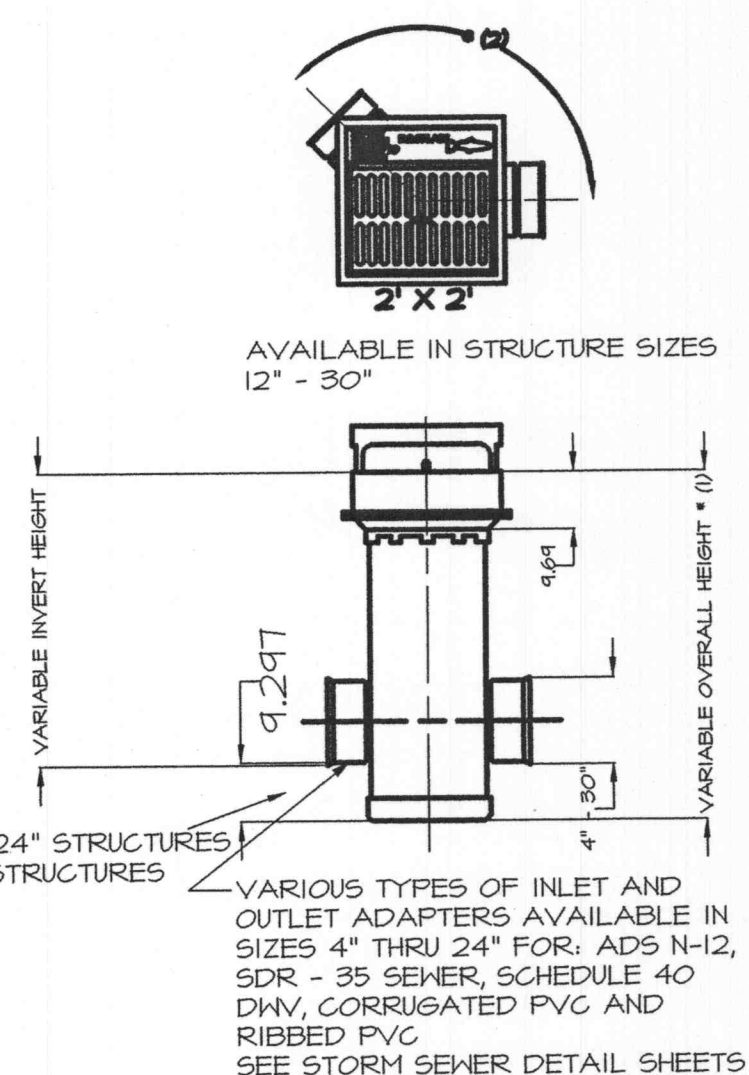


**RAIL ELEV.**

ALL PROPOSED FENCING REQUIRES A SEPARATE PERMIT THROUGH THE PLANNING DIVISION

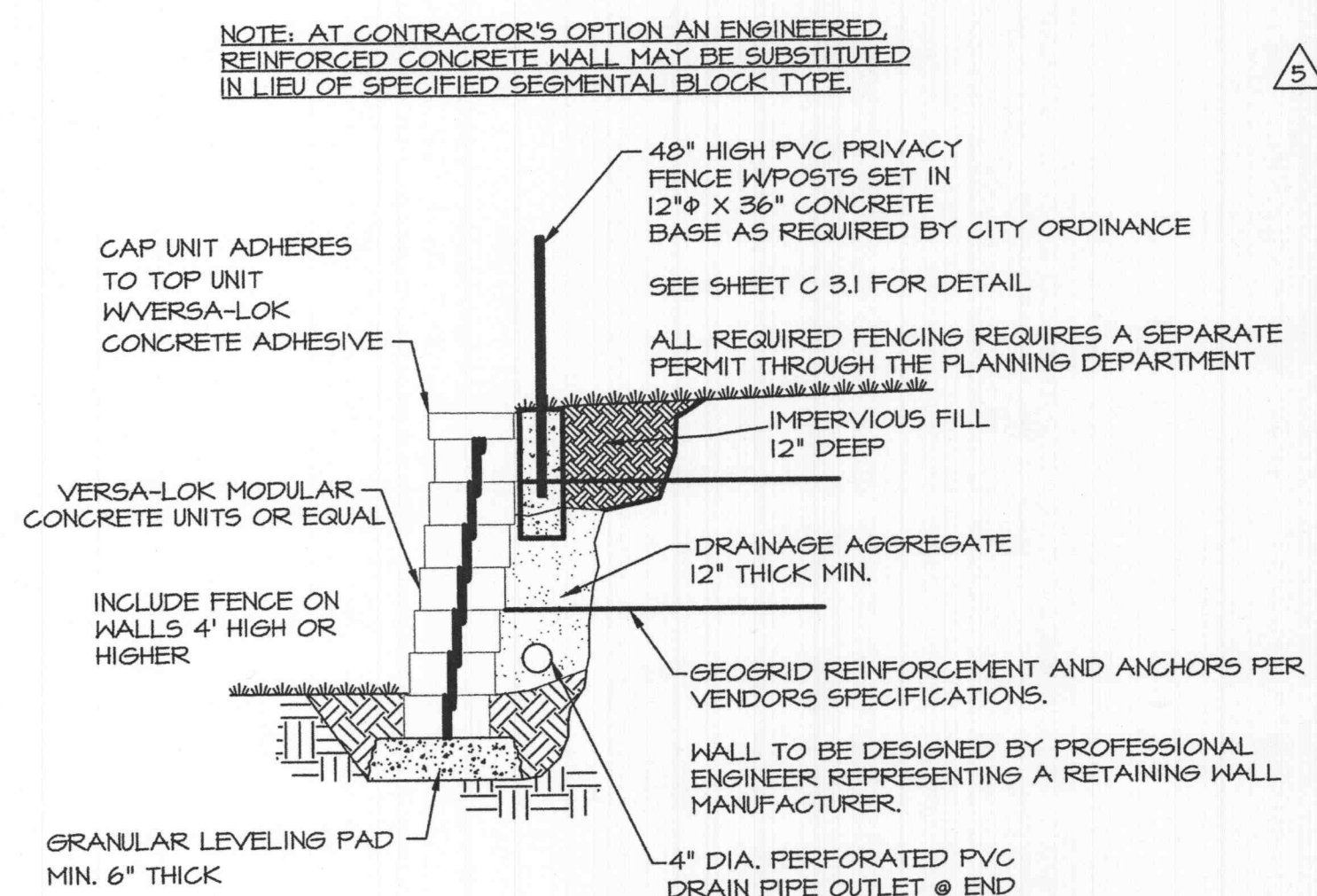


**CONCRETE RETAINING WALL DETAIL** ⑪  
(SCHEMATIC)

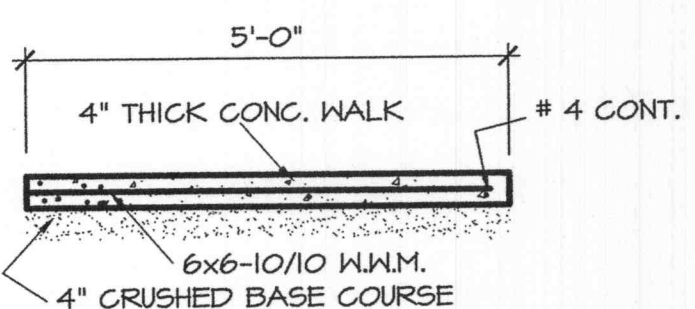


**2' X 2' CURB INLET DETAIL** ⑥  
NOT TO SCALE

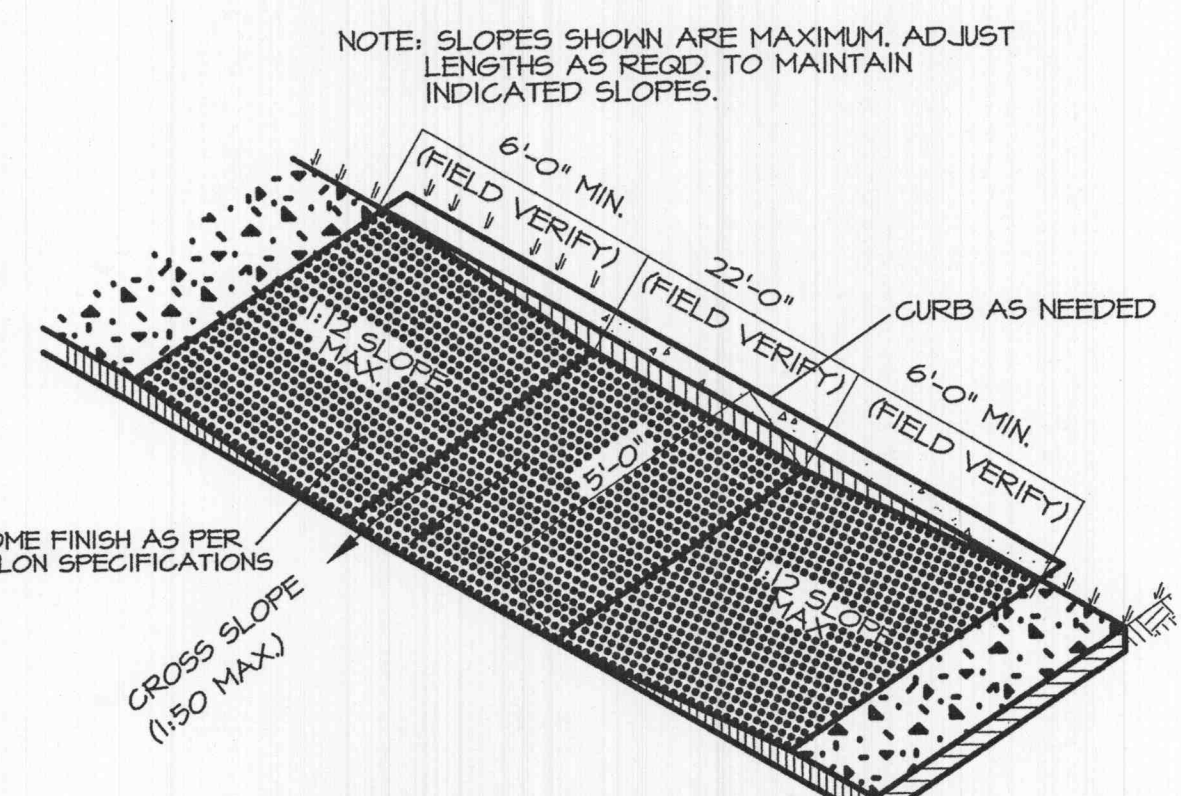
\* (1) MAXIMUM RECOMMENDED OVERALL HEIGHT 10"  
\* (2) ADAPTERS CAN BE MOUNTED AT ANY ANGLE 0° TO 35° TO DETERMINE MINIMUM ANGLE BETWEEN ADAPTERS.



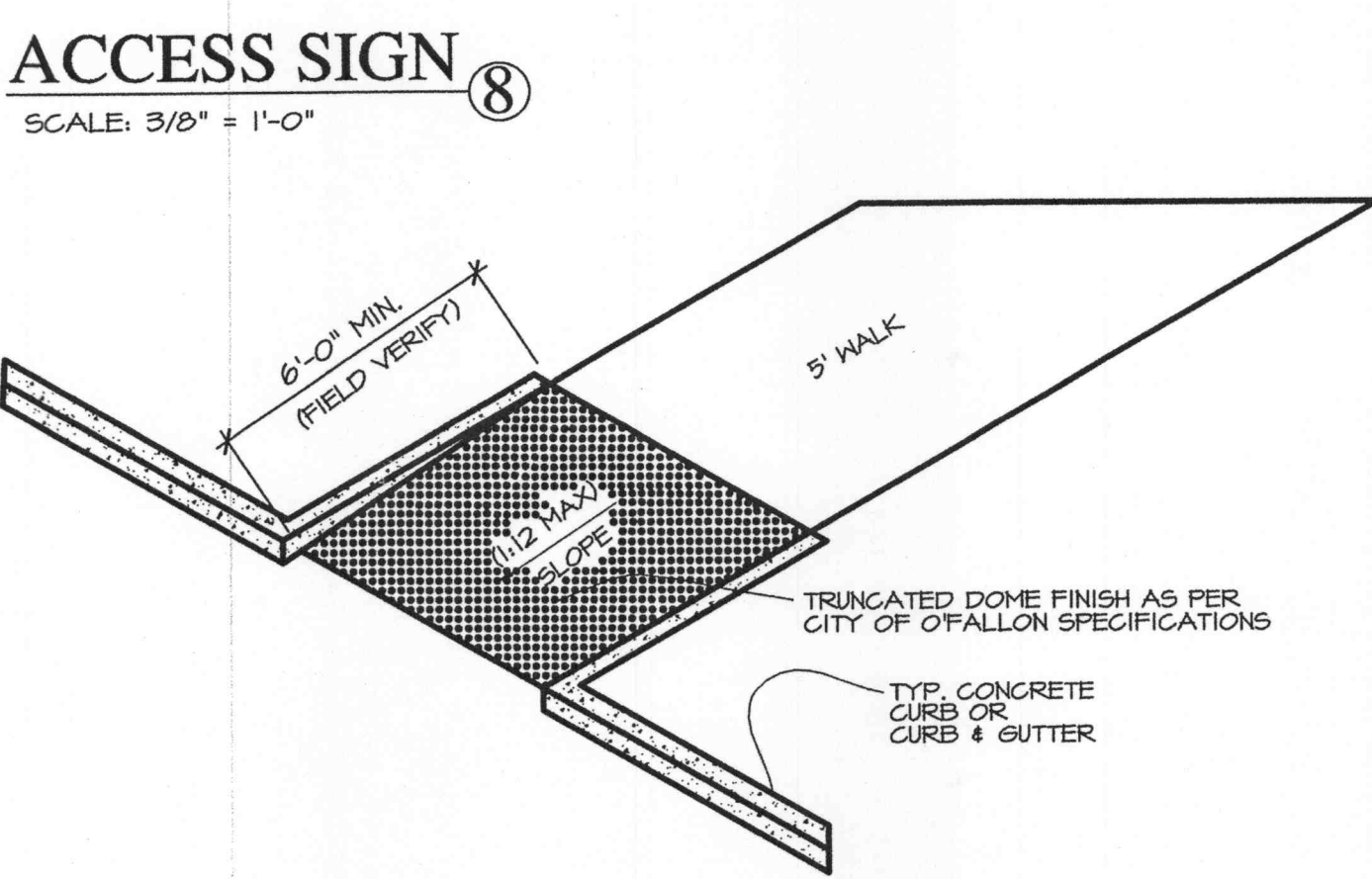
**RETAINING WALL** ⑫  
SCALE: 1/4" = 1'-0"



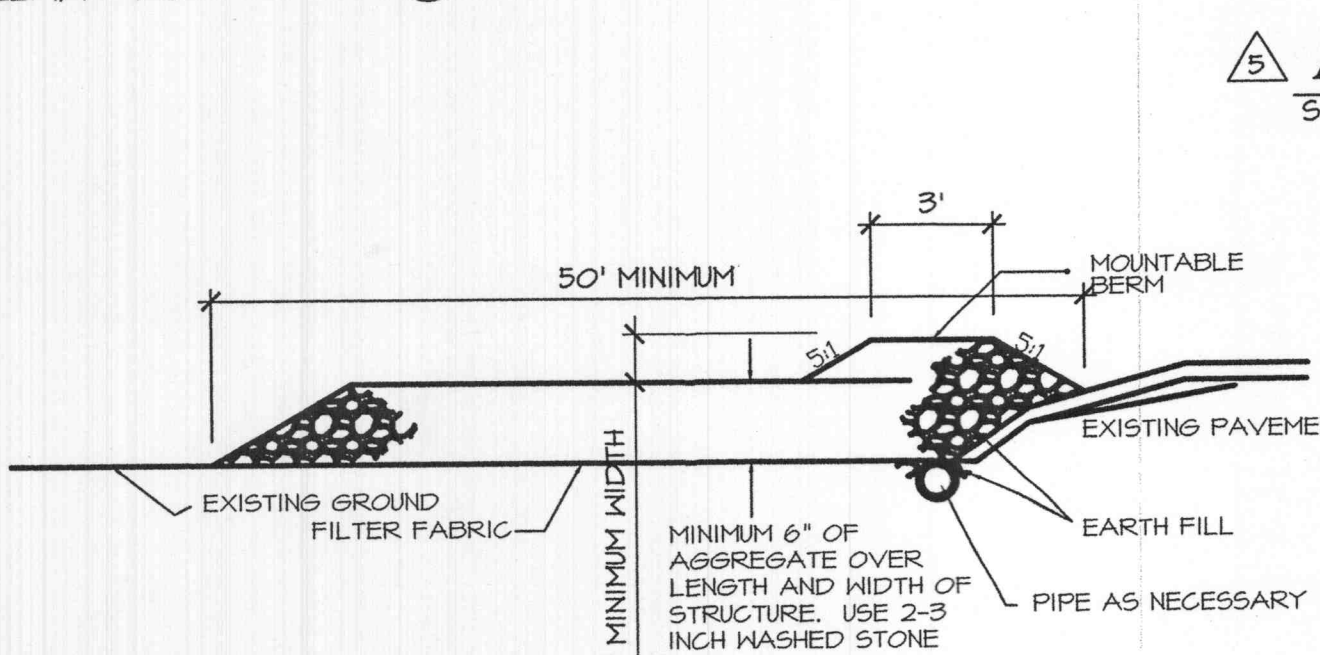
**SIDEWALK** ⑭  
SCALE: 1/2" = 1'-0"



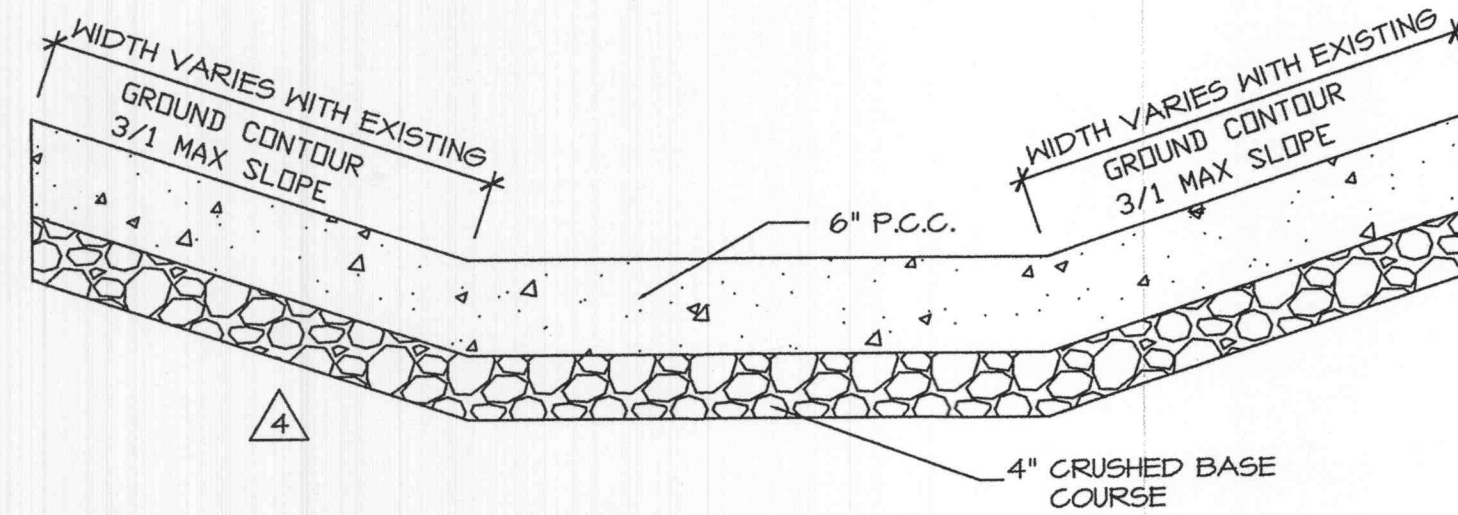
**DOUBLE CURB ACCESS RAMP** ⑨  
SCALE: 1/4" = 1'-0"



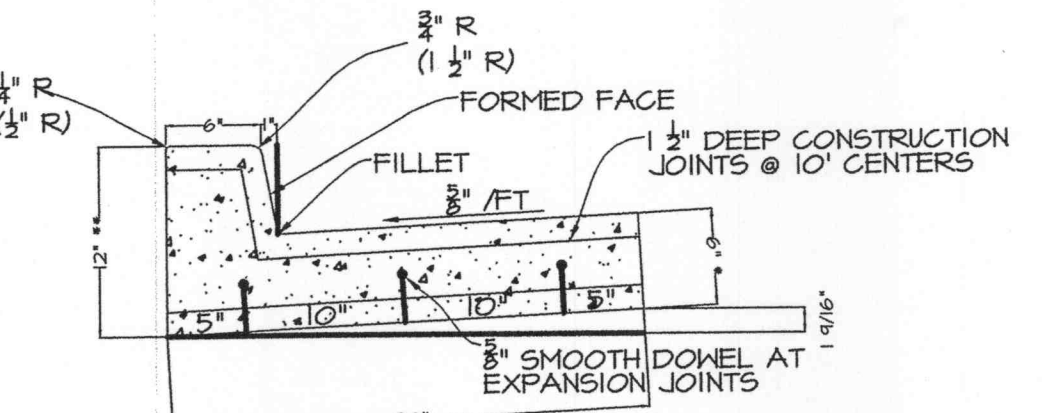
**ACCESS SIGN** ⑧  
SCALE: 3/8" = 1'-0"



**VEHICLE WASHOUT** ⑬  
SCALE: 1/4" = 1'-0"

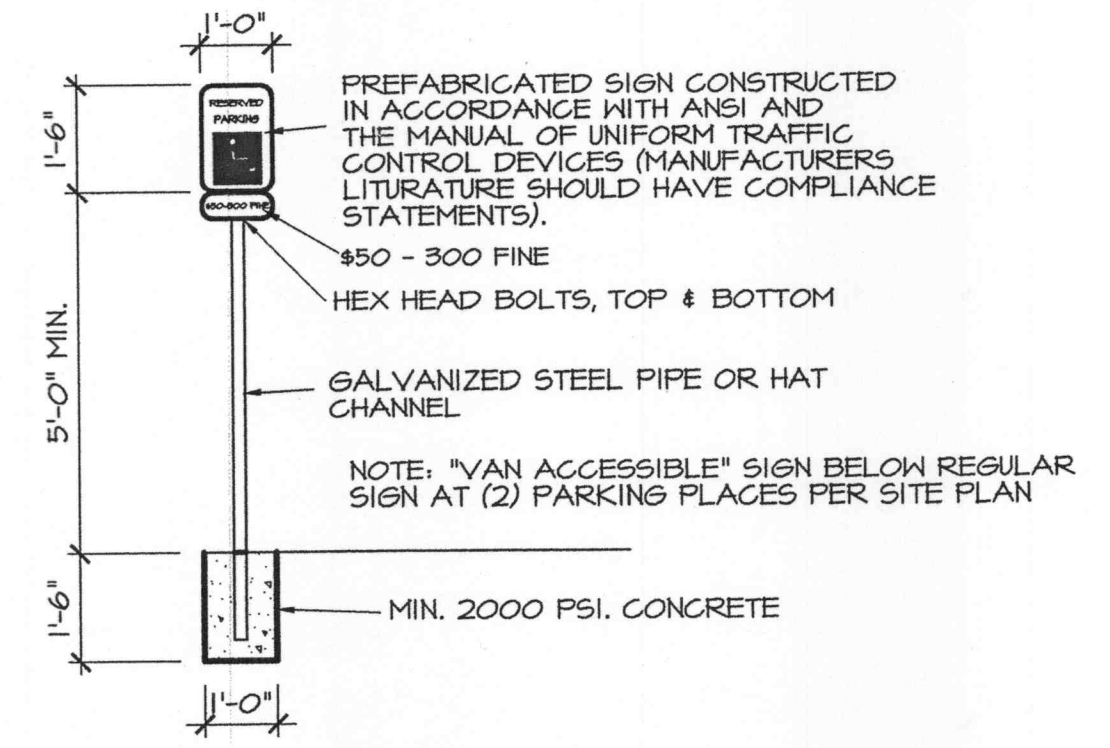


**3' CONC. SWALE** ⑮  
SCALE: 1/4" = 1'-0"



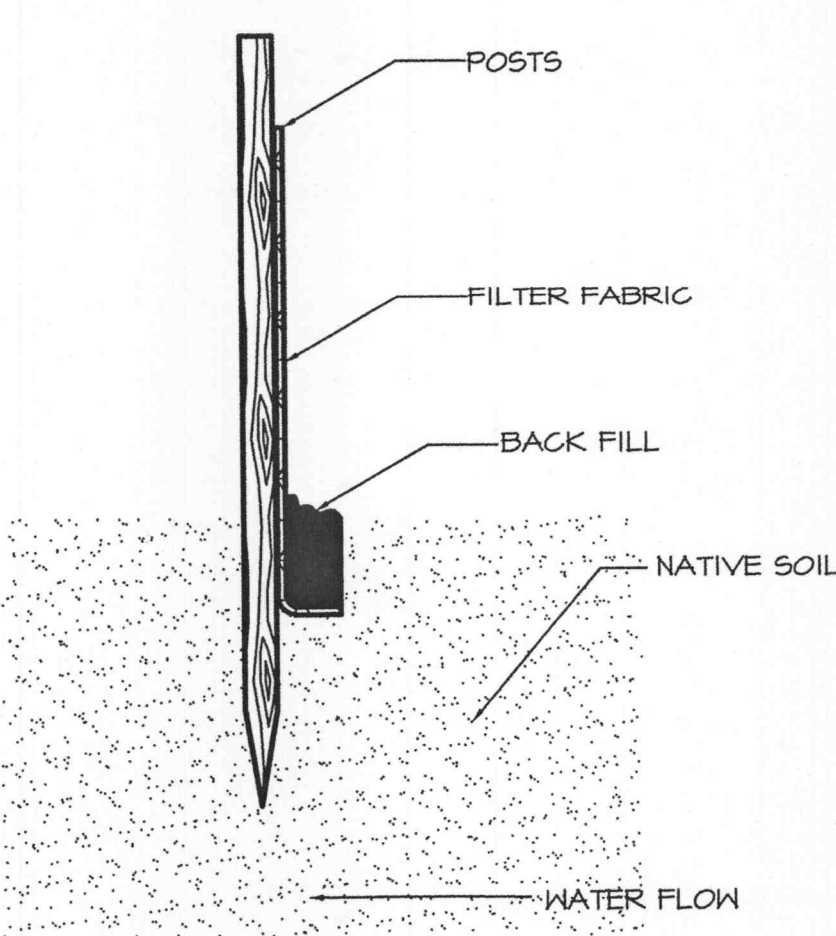
NOTES:  
EXPANSION JOINTS SHALL BE INSTALLED AT CURB RETURN RADIUS POINTS AND AT DRIVE APPROACHES, THESE 1/2" FELT, EXPANSION JOINTS SHALL HAVE 3/8" X 1/8" SMOOTH DOMELS. THESE DOMELS SHALL BE GREASED AND WRAPPED ON ONE END WITH EXPANSION TUBES.  
( ) ALTERNATE DIMENSION  
\* 6" MIN-MATCH PAVEMENT THICKNESS OF P.C.C. PAVEMENT  
\*\* 12" MIN - INCREASE BY SAME AMOUNT GUTTER PAN INCREASES

**TYPE "A" CURB & GUTTER** ④  
SCALE: 1" = 1'-0"

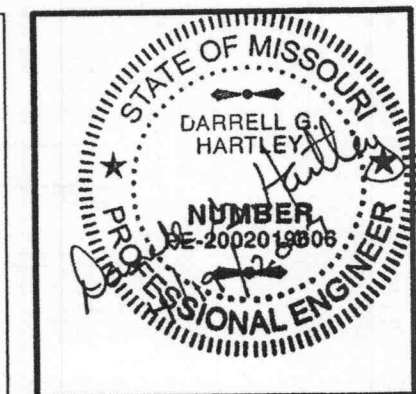


**ACCESS SIGN** ⑧  
SCALE: 3/8" = 1'-0"

**ACCESS RAMP** ⑩  
SCALE: 1/4" = 1'-0"



**SILT FENCE** ⑯  
NOT TO SCALE



**MILL POND APARTMENTS**  
**O'FALLON, MISSOURI**

**PINNACLE**  
Civil Engineering, L.L.C.  
Sven Oaks Center  
302 Campview Drive  
Columbia, MO 65201  
Phone: 572-255-2470  
Fax: 572-255-2471

COPYRIGHT © 2006
1ST ISSUE
09 NOVEMBER 2005
REVISIONS
▲ 23 JANUARY 2006
▲ 09 FEBRUARY 2006
▲ 02 JUNE 2006
▲ 07 SEPT 2006 THInc

SHEET NO.  
**C3.0**

JOB NO.	SHEET
2324	06 OF 17

▲ 18 SEPT 2006 THInc