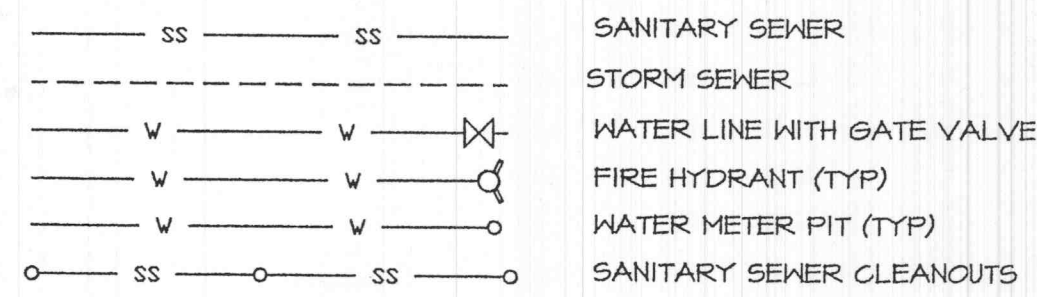


UTILITY INFORMATION

THE FOLLOWING PERSON AND / OR AGENCIES SHALL BE CONTACTED BY THE RESPECTIVE SUBCONTRACTORS TO VERIFY ALL ASPECTS OF SERVICE TO THE BUILDING-CONNECTIONS, PERMITS, FEES, LINE EXTENSIONS, ETC. - AS MAY BE REQUIRED FOR THE PROJECT. COORDINATION OF ALL WORK, OBTAINING REQUIRED PERMITS, PAYING FEES, ETC. OR INSTALLATION OF THE UTILITIES TO (AND IN) THE BUILDING SHALL BE THE RESPONSIBILITY OF THE VARIOUS SUBCONTRACTORS.

WATER: PWS#12 OF ST. CHARLES COUNTY, 100 WATER DR., OFALLON, MO 636-561-3137
 SEWER: CITY OF OFALLON, MO 100 N. MAIN ST., OFALLON, MO PH. (636) 240-2000
 ELECTRICAL: AMERIN UE, 200 N. CALLAHAN, WENTZVILLE, MO PH. (636) 634-8235
 TELEPHONE: CENTURY TEL. 2962 HMY K, OFALLON, MO PH. (636) 382-7392
 CABLE: CHARTER COMMUNICATIONS 100 N. MAIN ST., OFALLON, MO (636) 281-1111
 GAS: LACLEDE GAS T20 OLIVE ST., ST. LOUIS, MO (314) 621-6960

UTILITY LEGEND



UTILITY NOTES

RIP-RAP SHOWN AT FLARED ENDS WILL BE EVALUATED IN THE FIELD AFTER INSTALLATION FOR EFFECTIVENESS AND FIELD MODIFIED IF NECESSARY TO REDUCE EROSION ON AND OFF SITE.

ALL FILL PLACED UNDER PROPOSED STORM AND SANITARY SEWER, PROPOSED ROADS, AND/OR PAVED AREAS SHALL BE COMPACTED TO 90% OF MAXIMUM DENSITY AS DETERMINED BY THE MODIFIED AASHTO T-99 COMPACTION TEST OR 95% OF MAXIMUM DENSITY AS DETERMINED BY THE STANDARD PROCTOR TEST AASHTO T-99. ALL FILL PLACED IN PROPOSED ROADS SHALL BE COMPACTED FROM THE BOTTOM OF THE FILL UP. ALL TESTS SHALL BE VERIFIED BY A SOILS ENGINEER CONCURRENT WITH GRADING AND BACKFILLING OPERATIONS. ENSURE THE MOISTURE CONTENT OF THE SOIL IN FILL AREAS IS TO CORRESPOND TO THE COMPACTIVE EFFORT AS DEFINED BY THE STANDARD OR MODIFIED PROCTOR TEST. OPTIMUM MOISTURE CONTENT SHALL BE DETERMINED USING THE SAME TEST THAT WAS USED FOR COMPACTION. SOIL COMPACTION CURVES SHALL BE SUBMITTED TO THE CITY OF OFALLON PRIOR TO THE PLACEMENT OF FILL. PROOF ROLLING MAY BE REQUIRED TO VERIFY SOIL STABILITY AT THE DISCRETION OF THE CITY OF OFALLON.

BRICK SHALL NOT BE USED IN THE CONSTRUCTION OF STORM SEWER STRUCTURES.

ALL STORM SEWERS ARE PRIVATE.

ALL SANITARY LATERALS AND SANITARY MAINS CROSSING UNDER ROADWAYS MUST HAVE THE PROPER ROCK BACKFILL AND TO REQUIRED COMPACTION.

PROVIDE A MARKING ON THE STORM SEWER INLET. THE CITY WILL ALLOW THE FOLLOWING MARKERS AND ADHESIVE PROCEDURES ONLY AS SHOWN IN THE TABLE BELOW OR AN APPROVED EQUAL BY ALMETEK INDUSTRIES. 'FEEL AND STICK' ADHESIVE PADS WILL NOT BE ALLOWED.

MANUFACTURER	SIZE	ADHESIVE	STYLE	MESSAGE (PART #)	WEBSITE
ACP INTERNATIONAL	3 7/8"	EPOXY	CRYSTAL CAP	NO DUMPING DRAINS TO WATERWAYS (SD-W-CO)	WWW.ACPINTERNATIONAL.COM
DAS MANUFACTURING CO.	4"	EPOXY	STANDARD STYLE	NO DUMPING DRAINS TO STREAMS (HSDS)	WWW.DASMANUFACTURING.COM

THE CITY OF OFALLON SHALL ALSO BE CONTACTED FOR UTILITY LOCATES UNDER ITS MAINTENANCE RESPONSIBILITY. THIS MAY INCLUDE WATER, SANITARY, STORM, AND TRAFFIC LOCATES.

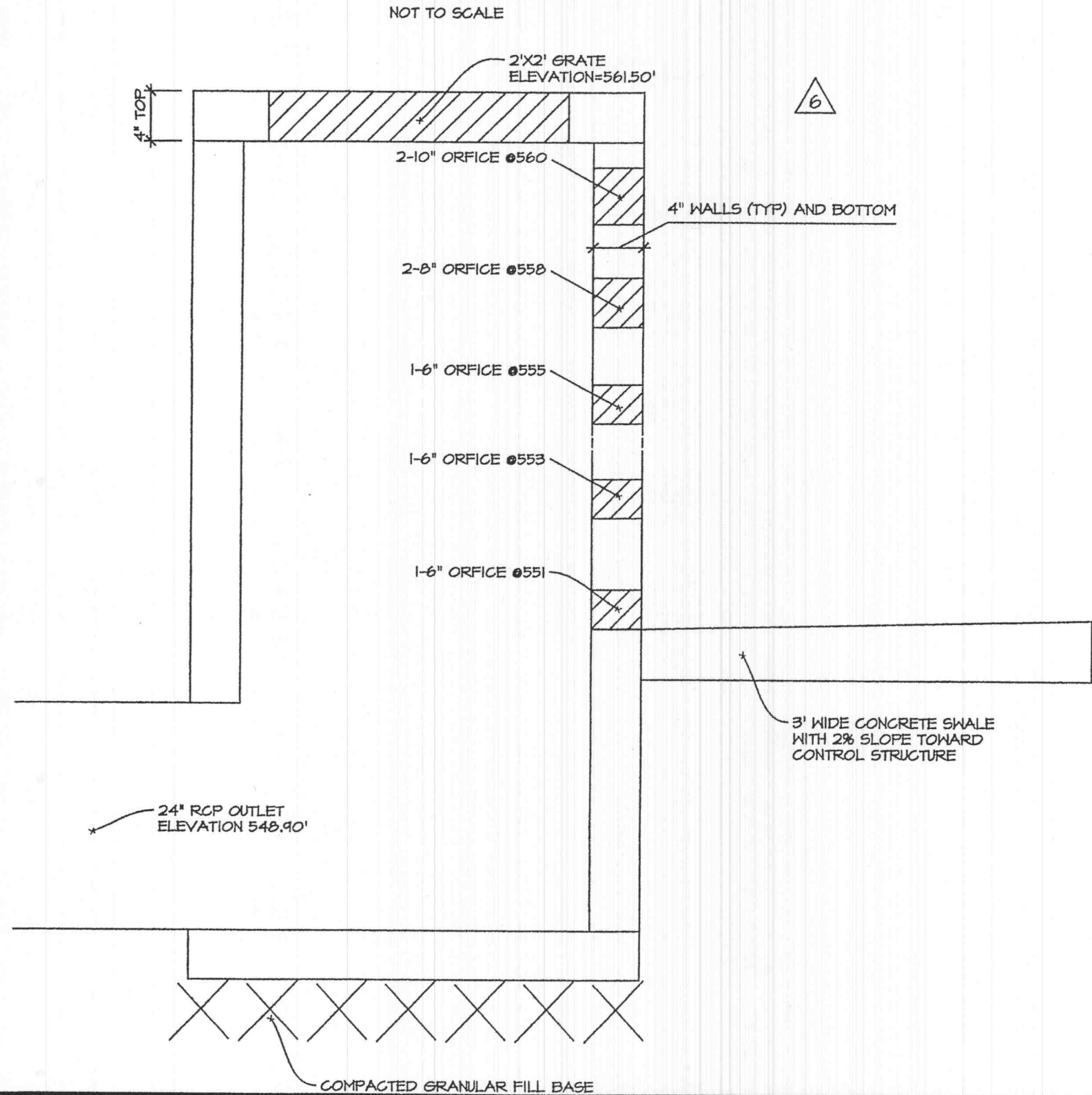
CUTOFF WALLS ON FE'S ARE 2' DEEP UPSTREAM, AND 3' DEEP DOWNSTREAM. (FE'S SHALL BE CONC.)

PROVIDE GRANULAR FILL AROUND SANITARY AND STORM LINES WITH TRENCHES WITHIN 10 FEET OF THE EDGE OF PAVEMENT CURB AND IN THE 1 TO 1 SHEAR PLANE OF THE PAVEMENT.

THE RELOCATED SANITARY SEWER WILL NEED TO BE INSTALLED WITH THE INITIAL CONSTRUCTION AND THE AS BUILT PLANS WILL BE REQUIRED TO BE REVIEWED AND APPROVED BEFORE THE LINE IS PLACED IN SERVICE AND THE OLD LINE REMOVED.

REMOVE EXISTING PORTION OF WATERLINE IDENTIFIED ON SHEET C2.0 WHICH IMPACTS MEW CONSTRUCTION.

DETENTION BASIN CONTROL STRUCTURE



SITE UTILITY PLAN

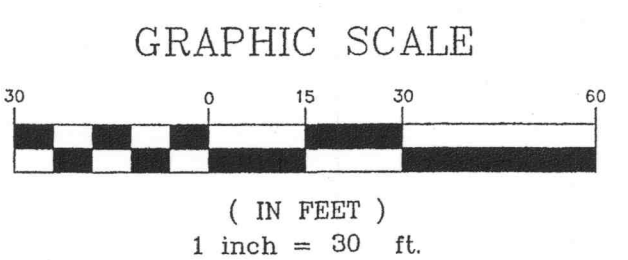
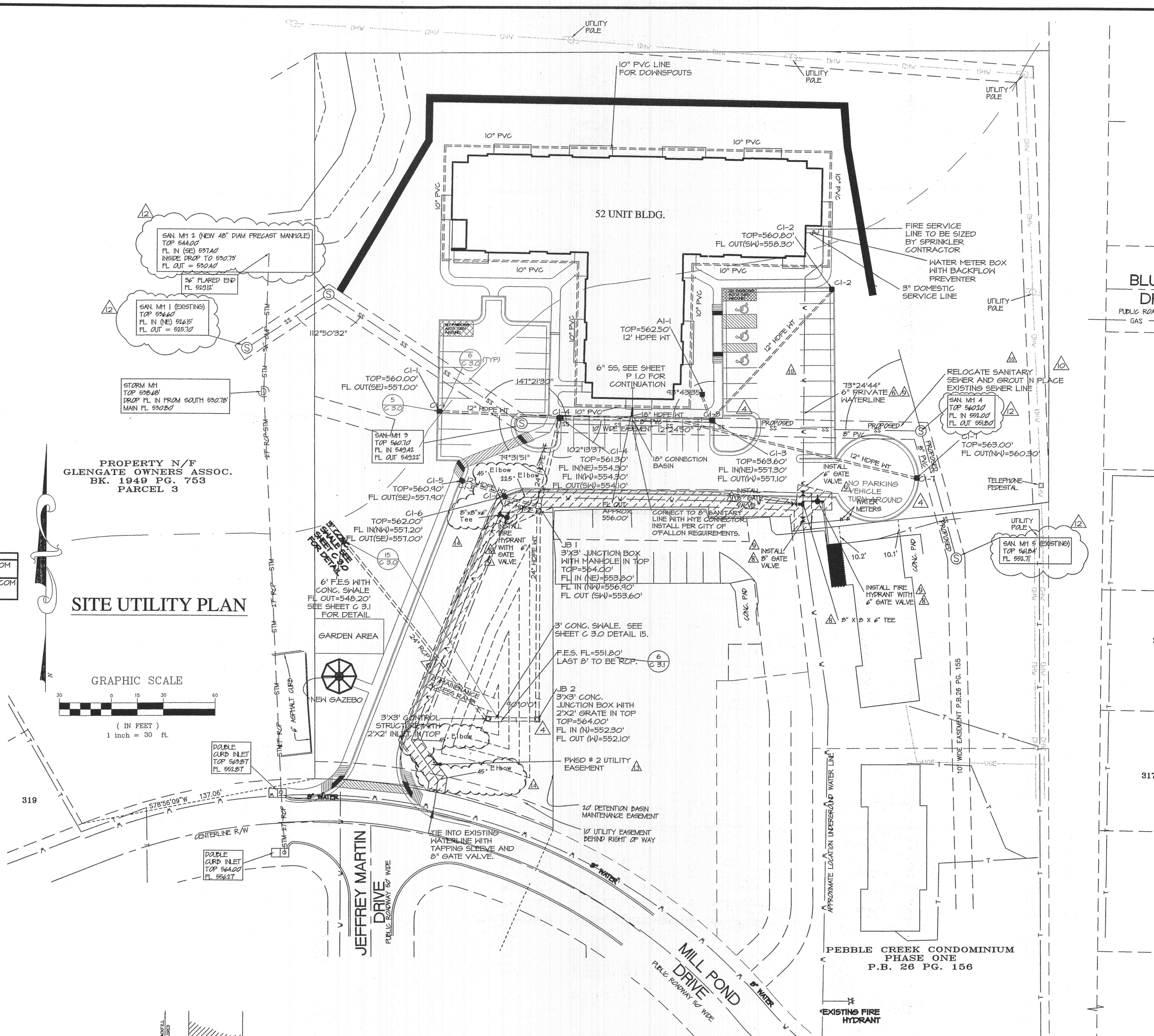


TABLE OF EMBEDMENT DEPTHS BELOW PIPE

D	A	A
	MIN SOIL	MIN ROCK
0'-27"	4'	6'
30'-60"	6'	9'
66"-UP	8'	12'

DETAIL NO. SAN_000

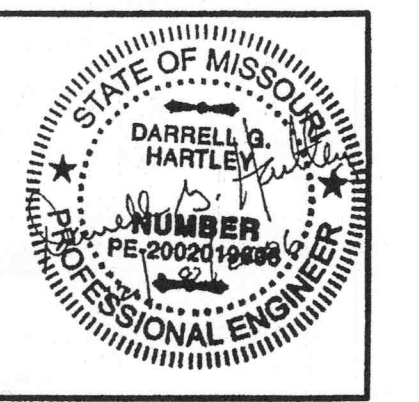
- ### PIPE EMBEDMENT NOTES
- GRANULAR BEDDING SHALL BE CRUSHED LIMESTONE AND SCREENINGS, 3/4" MINUS TO BE PLACED IN NOT MORE THAN 6" LAYERS AND COMPACTED BY SLICING WITH A SHOVEL OR VIBRATING.
 - TAMPED GRANULAR BACKFILL (TYPE 3) SHALL BE GRANULAR MATERIAL CONFORMING TO THE REQUIREMENTS OF SECTION 1007.3 OF THE 1999 MISSOURI STANDARD SPECIFICATIONS FOR HIGHWAY CONSTRUCTION. THIS MATERIAL SHALL BE USED AT ALL EXISTING AND PROPOSED STREET CROSSINGS.
 - TRENCH BACKFILL (TYPE 1) SHALL BE FINELY DIVIDED MATERIAL FREE FROM DEBRIS AND STONES, COMPACTED TO 95% MAXIMUM DENSITY.

SEWER PIPE EMBEDMENT DETAILS

APPROVED FOR CONSTRUCTION AND/OR INSTALLATION BY
[Signature]
 ST. CHARLES COUNTY PUBLIC WATER SUPPLY DISTRICT NO. 2

- WATERLINE DETAILS ARE FOUND ON SHEET C6.3
- 14 DEC 2006 THInc
 - 07 NOV 2006 THInc
 - 21 NOV 2006 THInc
 - 30 NOV 2006 THInc

- ASI #4
- 21 SEPT 2006 THInc
 - 10 OCT 2006 THInc
 - 20 OCT 2006 THInc
 - 27 OCT 2006 THInc



MILL POND APARTMENTS O'FALLON, MISSOURI

PINNACLE
 Civil Engineering, L.L.C.
 Seven Oaks Center
 308 Oakway Drive
 Suite 208
 Columbia, MO 65201
 Phone: 573/266-7200
 Fax: 573/266-2447

COPYRIGHT © 2006

1ST ISSUE
 09 NOVEMBER 2005

REVISIONS

- 23 JANUARY 2006
- 09 FEBRUARY 2006
- 02 JUNE 2006
- 07 SEPT 2006 THInc

SHEET NO.
C6.0

JOB NO. 2324 SHEET 12 OF 63